



Community Transitions Design Update

Whatcom
COMMUNITY COLLEGE

ZERVAS
Architects

COMMUNITYtransitions
live learn work play

Agenda



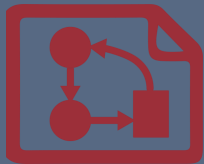
Welcome and Introductions

WCC and BPS, Vision and Goals



Project Snapshot

Design Update on the Project



Site

Project Givens



Question & Answer



Introductions

Vision and Goals, WCC and BPS



Brian Keeley - Senior Director of Facilities and Operations



**Bellingham
Public Schools**

Austin Scheffer – Capital Projects and Procurement Supervisor
Jacqueline Brawley – Communications Director



Andrew Krzysiek – Principal Architect



Whatcom
COMMUNITY COLLEGE

+



What is Community Transitions?



Community Transitions (CT) is a Special Education program within Bellingham Public Schools that serves students till age of 22. Students often encounter a new set of adult challenges which require different responses as they leave the high school setting. CT provides a continuum of services intended to prepare students with mild to severe disabilities for a successful transition to independent living, employment and/or post-secondary training.



We offer a part-time schedule of classes as well as job-coaching, work-based learning opportunities, and case management. Supports are individualized within these structured opportunities based on the student's need. Adult students, families, and case managers work as a team to create and nurture partnerships with adult services, college staff and businesses in the local community to identify the best place to maximize each individual student's potential for success.

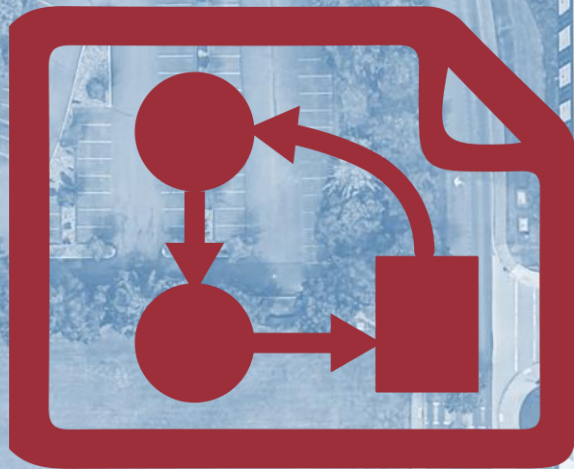
What is Community Transitions?



Want to know more?

- ❖ Bellingham Public Schools Community Transitions FAQ on website-
 - <https://bellingshamschools.org/programs/community-transitions-ct/>

- ❖ Bellingham Public Schools CT Orientation Video-
 - <https://bellingham.wistia.com/medias/c2phlzcfnk>



Site

Project Givens and Parameters

Site Location



Whatcom
COMMUNITY COLLEGE



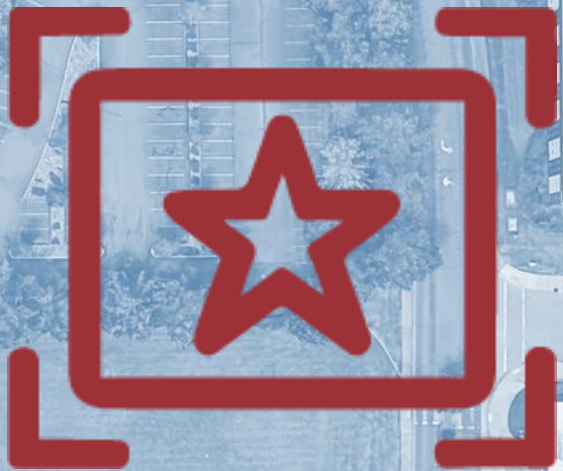
Project Site



PROPERTY
BOUNDARY



CAMPUS
CONNECTIVITY



Project Snapshot

Design Update of the Community Transitions Project

First Floor Plan



Second Floor Plan





Street Level SE



Street Level SW



Accessible Route NE



Accessible Route – Campus Connection



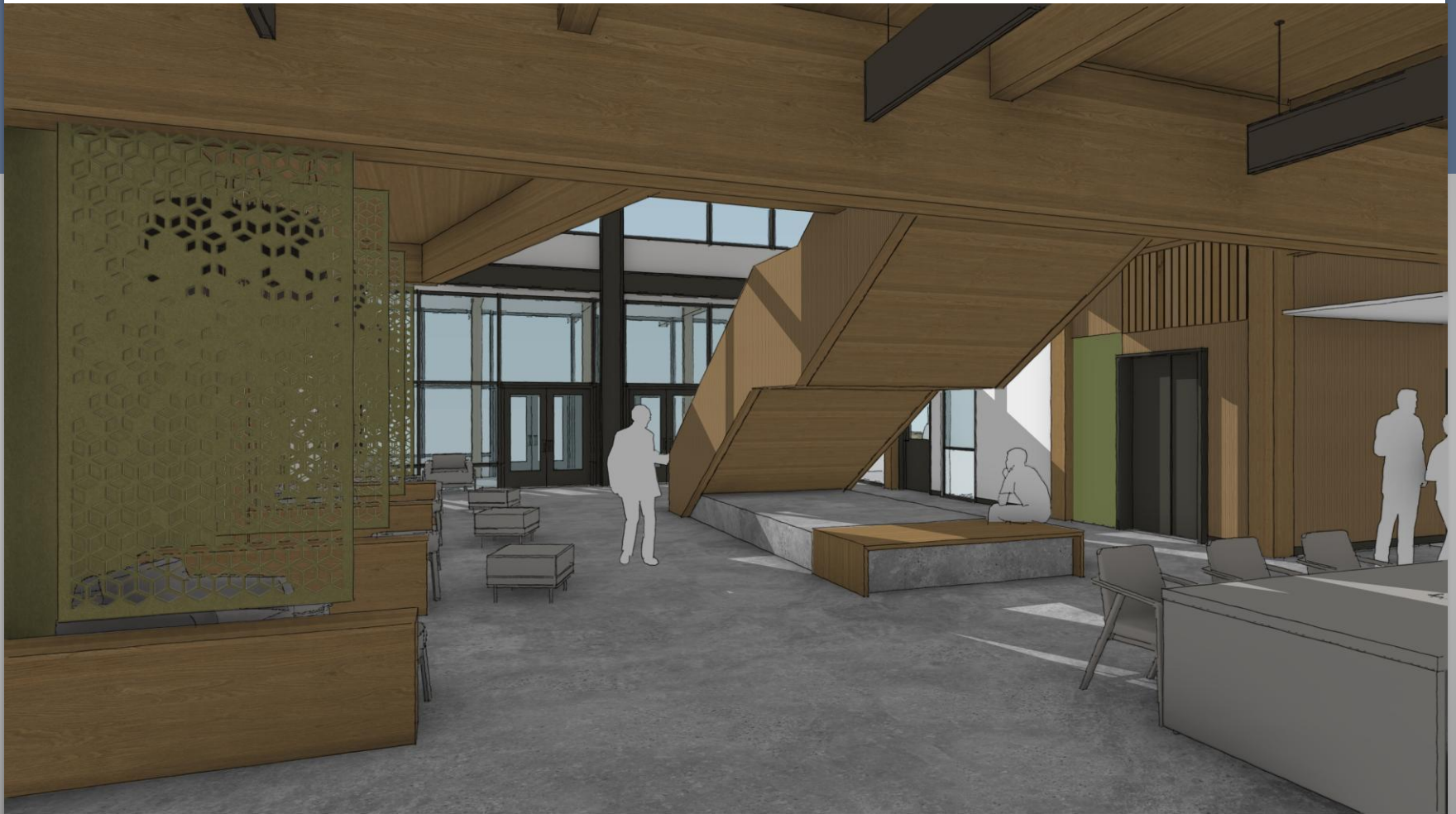
Accessible Route NW



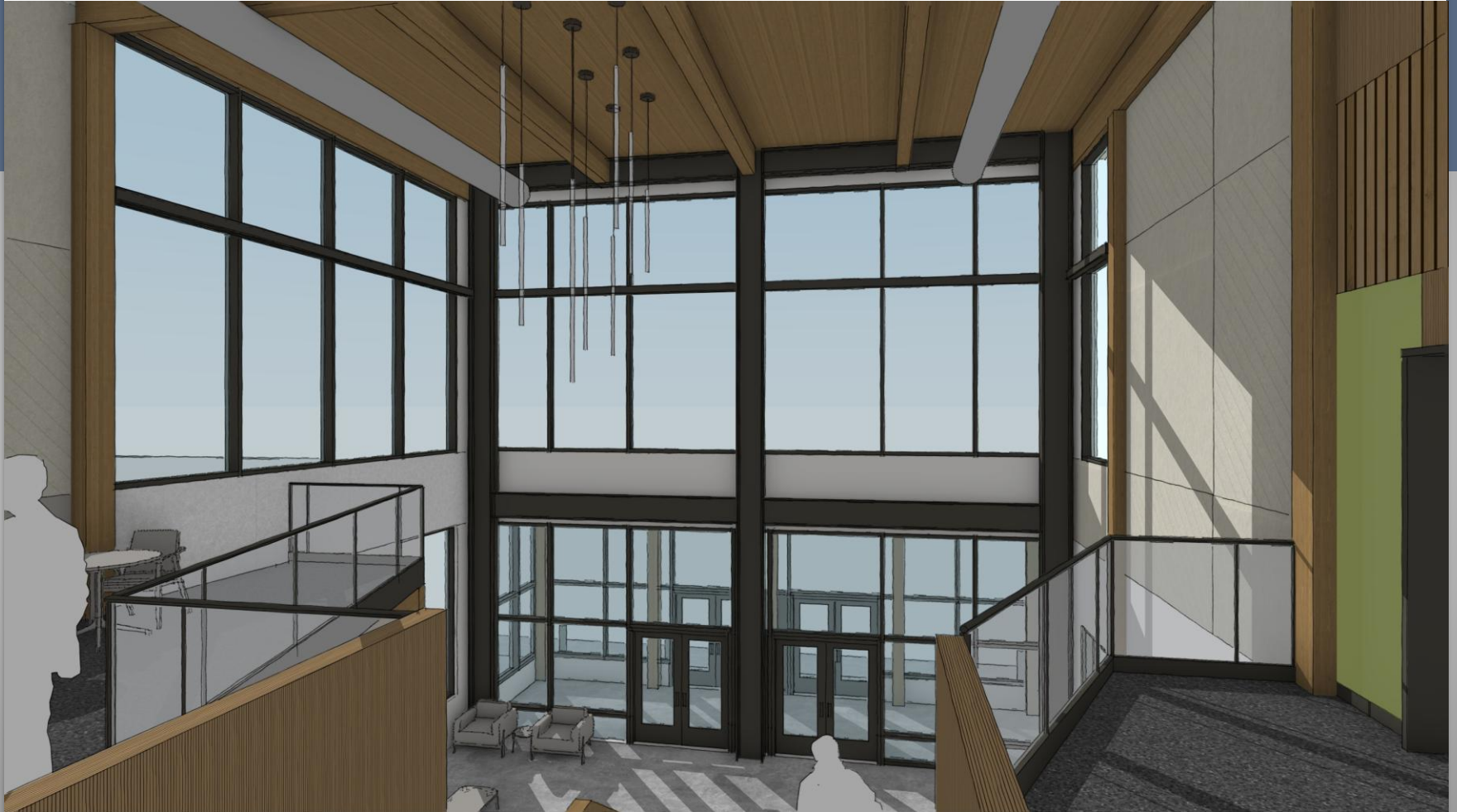
Welcome Area - Stair



Welcome Area - Hub



Welcome Area - Balcony





Next Steps!



Question & Answer



Thank you!

Your feedback is important to us!

andrew@zervasgroup.com