



CLIENT: *The Washington Post*

ASSIGNMENT: Editorial article about talking to your kids about climate change.



**JON CANNELL DESIGN & ILLUSTRATION**

T: 425.922.3514 / E: [joncannelldesign@gmail.com](mailto:joncannelldesign@gmail.com) / W: [jcannelldesign.com](http://jcannelldesign.com)

*Illustration Represented by Lilla Rogers Studio*

T: 781.641.2787 / W: [lillarogers.com](http://lillarogers.com)



Airplane themed bedding



Crib set



Area rug



Embroidery detail



Sheets with throw pillow

CLIENT: *Land of Nod* (Now *Crate and Kids*)

ASSIGNMENT: Design and illustration of an airplane themed bedding line. The set included an embroidered duvet cover, sheets, pillow covers, throw pillows, a large area rug and a crib set.



JON CANNELL DESIGN & ILLUSTRATION

T: 425.922.3514 / E: [joncannelldesign@gmail.com](mailto:joncannelldesign@gmail.com) / W: [jcannelldesign.com](http://jcannelldesign.com)

Illustration Represented by *Lilla Rogers Studio*

T: 781.641.2787 / W: [lillarogers.com](http://lillarogers.com)



Firefighter themed bedding



Crib set



Sheet pattern detail



Throw pillow



Throw pillow

CLIENT: *Land of Nod* (Now Crate and Kids)

ASSIGNMENT: Design and illustration of an firefighter themed bedding line. The set included an embroidered duvet cover, sheets, pillow covers, throw pillows, a crib set and a changing pad.



JON CANNELL DESIGN & ILLUSTRATION

T: 425.922.3514 / E: [jonnacnclldesign@gmail.com](mailto:joncannelldesign@gmail.com) / W: [jonnacnclldesign.com](http://jonnacnclldesign.com)

Illustration Represented by Lilla Rogers Studio

T: 781.641.2787 / W: [lillarogers.com](http://lillarogers.com)



Math themed bedding



Math and Science Throw Pillows

CLIENT: *Land of Nod* (Now Crate and Kids)

ASSIGNMENT: A math themed bedding set and math and science throw pillows. All elements were drawn by hand in pen and ink and converted to a repeat pattern for the bedding.



JON CANNELL DESIGN & ILLUSTRATION

T: 425.922.3514 / E: joncannelldesign@gmail.com / W: jcannelldesign.com

Illustration Represented by Lilla Rogers Studio

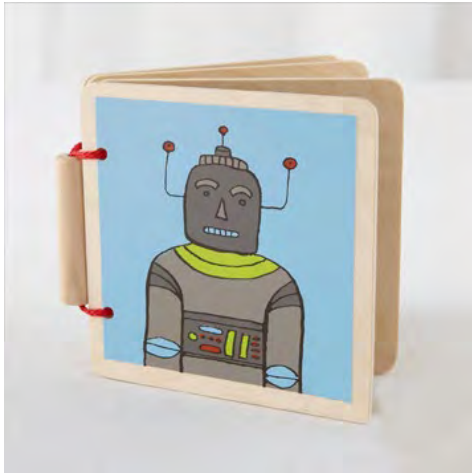
T: 781.641.2787 / W: lillarogers.com



Astronaut sleeping bag



Space wood book



Robot wood book



Periodic Table of Elements canvas chart



French themed chair and ottoman



Robot themed chair and ottoman



Firefighter wood blocks



Firefighter wood blocks



US canvas map

CLIENT: *Land of Nod* (Now Crate and Kids)

ASSIGNMENT: Miscellaneous products developed for Land of Nod.



# JON CANNELL DESIGN & ILLUSTRATION

T: 425.922.3514 / E: joncannell@gmail.com / W: jcannell.com

Illustration Represented by Lilla Rogers Studio

T: 781.641.2787 / W: lillarogers.com



CLIENT: *Good Times Burgers & Frozen Custard*

ASSIGNMENT: TV commercial featuring dogs in different environments and activities and promoted the Paw Bender treat that consists of vanilla frozen custard, peanut butter and dog biscuits. A percentage of sales goes to dog charities.



**JON CANNELL DESIGN & ILLUSTRATION**

T: 425.922.3514 / E: [joncannelldesign@gmail.com](mailto:joncannelldesign@gmail.com) / W: [jcannelldesign.com](http://jcannelldesign.com)

*Illustration Represented by Lilla Rogers Studio*

T: 781.641.2787 / W: [lillarogers.com](http://lillarogers.com)



CLIENT: *Good Times Burgers & Frozen Custard*

ASSIGNMENT: TV commercial for Good Times Burgers and Frozen Custard. This commercial featured kids in different environments and activities and highlighted the various kid's meals offered at Good Times..



**JON CANNELL DESIGN & ILLUSTRATION**

T: 425.922.3514 / E: [joncannelldesign@gmail.com](mailto:joncannelldesign@gmail.com) / W: [jcannelldesign.com](http://jcannelldesign.com)

*Illustration Represented by Lilla Rogers Studio*

T: 781.641.2787 / W: [lillarogers.com](http://lillarogers.com)



CLIENT: *The J. Paul Getty Museum*

ASSIGNMENT: An children's book through the J. Paul Getty Museum in California. My Travels with Clara is the true story of a five-thousand-pound rhinoceros and her owner, an eighteenth-century Dutch sea captain. A life-size portrait of the famous rhinoceros named Clara was the massive centerpiece of the Getty Museum's 2007 exhibition Oudry's Painted Menagerie.

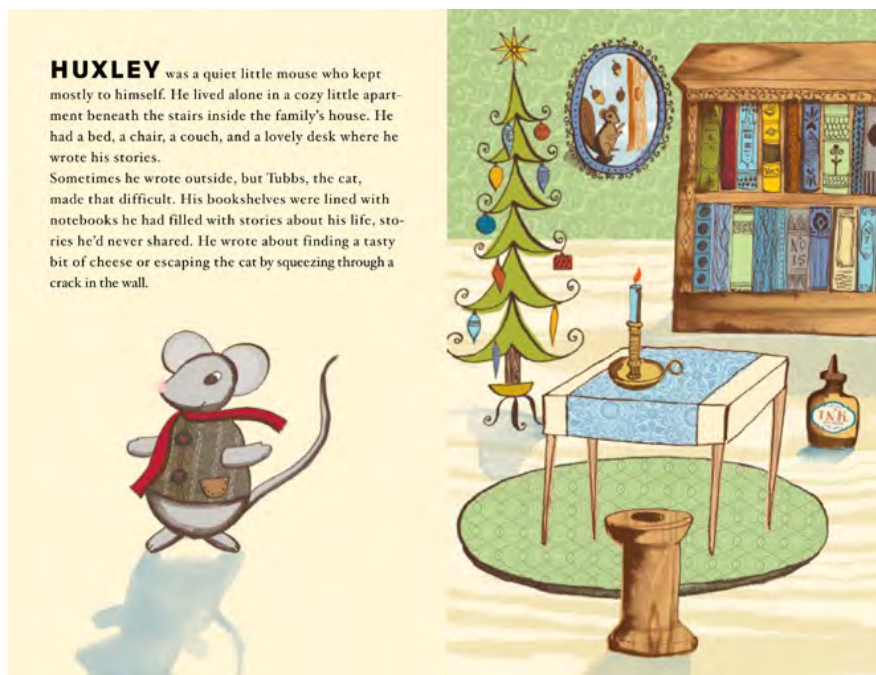


**JON CANNELL DESIGN & ILLUSTRATION**

T: 425.922.3514 / E: [joncannell@gmail.com](mailto:joncannell@gmail.com) / W: [jcannell.com](http://jcannell.com)

*Illustration Represented by Lilla Rogers Studio*

T: 781.641.2787 / W: [lillarogers.com](http://lillarogers.com)



CLIENT: *Starbucks Coffee Company*

ASSIGNMENT: A children's story developed by the Starbucks Global Creative Group. The Mouse Writer was a charming story of a mouse named Huxley who wrote amazing stories with his tail and lived in a cozy space beneath the Taylor's family stairs. I illustrated the book, a hot cocoa mug and a tumbler. The book and merchandise were offered over the Holiday Season.

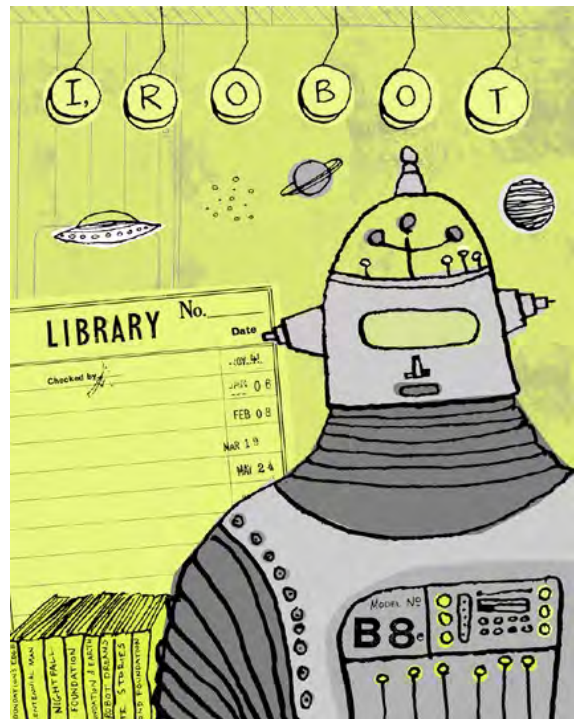
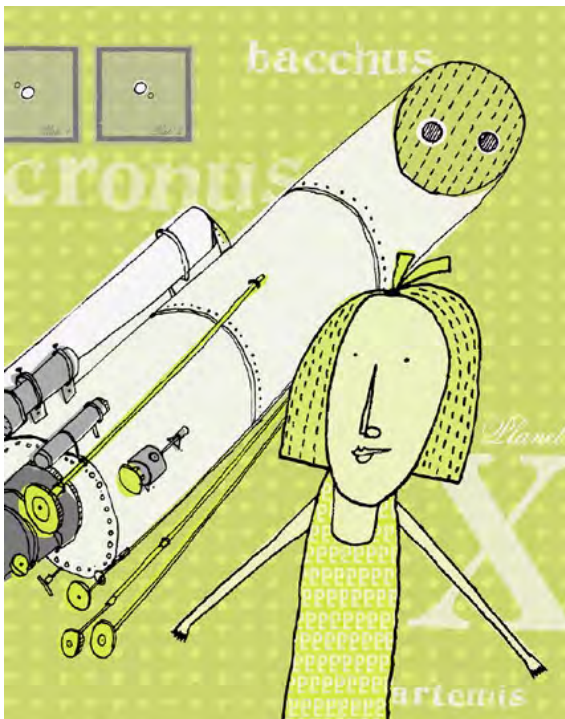
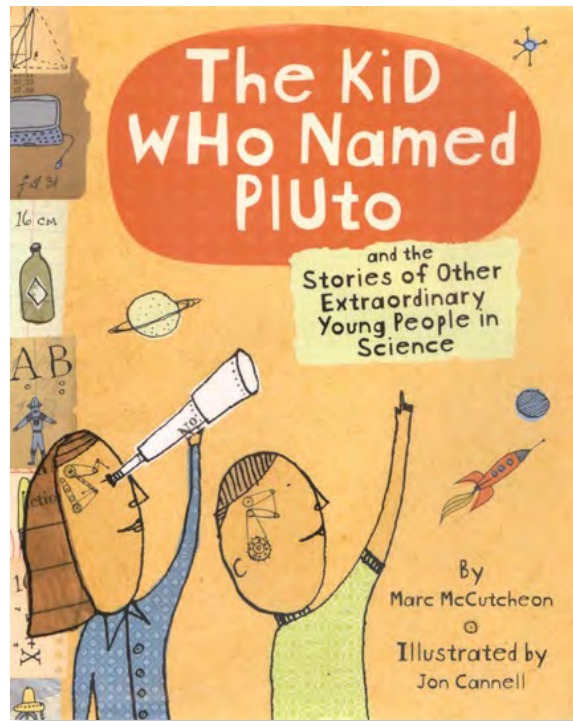


## JON CANNELL DESIGN & ILLUSTRATION

T: 425.922.3514 / E: [joncannelldesign@gmail.com](mailto:joncannelldesign@gmail.com) / W: [jcannelldesign.com](http://jcannelldesign.com)

*Illustration Represented by Lilla Rogers Studio*

T: 781.641.2787 / W: [lillarogers.com](http://lillarogers.com)



CLIENT: *Chronicle Books*

ASSIGNMENT: A collection of true stories of kids who have made amazing contributions to science, literature and inventions throughout history. The book includes stories of Louis Braille developing a system for the blind to read, Philo Farnsworth inventing television, Venetia Burney naming Pluto and many other stories. The publisher was Chronicle Books in San Francisco.



**JON CANNELL DESIGN & ILLUSTRATION**

T: 425.922.3514 / E: [joncannelldesign@gmail.com](mailto:joncannelldesign@gmail.com) / W: [jocannelldesign.com](http://jocannelldesign.com)

*Illustration Represented by Lilla Rogers Studio*

T: 781.641.2787 / W: [lillarogers.com](http://lillarogers.com)



ILLUSTRATION: *Space Odyssey*

ASSIGNMENT: A personal piece created for Lilla Roger's Art Menagerie this year. The space illustration also included complimentary patterns.



JON CANNELL DESIGN & ILLUSTRATION

T: 425.922.3514 / E: [joncannelldesign@gmail.com](mailto:joncannelldesign@gmail.com) / W: [jcanelldesign.com](http://jcanelldesign.com)

*Illustration Represented by Lilla Rogers Studio*

T: 781.641.2787 / W: [lillarogers.com](http://lillarogers.com)



ILLUSTRATION: *Homestead*

ASSIGNMENT: A personal piece created for Lilla Roger's Art Menagerie last year.



## JON CANNELL DESIGN & ILLUSTRATION

T: 425.922.3514 / E: [joncannelldesign@gmail.com](mailto:joncannelldesign@gmail.com) / W: [jcannelldesign.com](http://jcannelldesign.com)

*Illustration Represented by Lilla Rogers Studio*

T: 781.641.2787 / W: [lillarogers.com](http://lillarogers.com)



ILLUSTRATION: *Sasquatch*

ASSIGNMENT: A personal piece created for Lilla Roger's Art Menagerie last year.



**JON CANNELL DESIGN & ILLUSTRATION**

T: 425.922.3514 / E: [joncannelldesign@gmail.com](mailto:joncannelldesign@gmail.com) / W: [jocannelldesign.com](http://jocannelldesign.com)

*Illustration Represented by Lilla Rogers Studio*

T: 781.641.2787 / W: [lillarogers.com](http://lillarogers.com)



ILLUSTRATION: *Chickens*

ASSIGNMENT: A personal piece created for the Surtex surface and pattern trade show.



JON CANNELL DESIGN & ILLUSTRATION

T: 425.922.3514 / E: [joncannelldesign@gmail.com](mailto:joncannelldesign@gmail.com) / W: [jcanelldesign.com](http://jcanelldesign.com)

Illustration Represented by Lilla Rogers Studio

T: 781.641.2787 / W: [lillarogers.com](http://lillarogers.com)



ILLUSTRATION: *London*

ASSIGNMENT: A personal piece created for the Surtex surface and pattern trade show.



JON CANNELL DESIGN & ILLUSTRATION

T: 425.922.3514 / E: [joncannelldesign@gmail.com](mailto:joncannelldesign@gmail.com) / W: [jcannelldesign.com](http://jcannelldesign.com)

*Illustration Represented by Lilla Rogers Studio*

T: 781.641.2787 / W: [lillarogers.com](http://lillarogers.com)

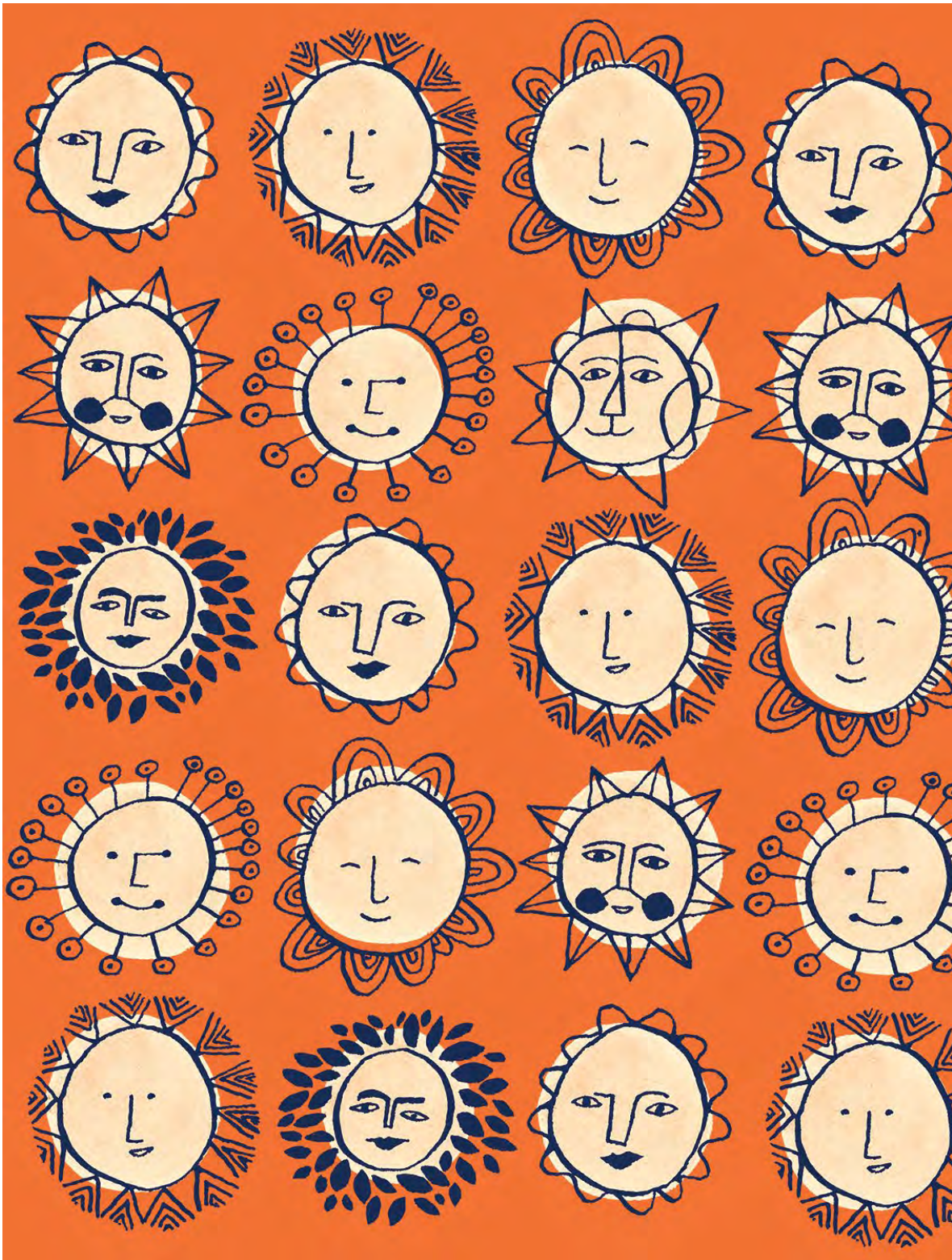


ILLUSTRATION: *Suns*

ASSIGNMENT: A personal piece created for the Surtex surface and pattern trade show.



JON CANNELL DESIGN & ILLUSTRATION

T: 425.922.3514 / E: [joncannelldesign@gmail.com](mailto:joncannelldesign@gmail.com) / W: [jcanelldesign.com](http://jcanelldesign.com)

Illustration Represented by Lilla Rogers Studio

T: 781.641.2787 / W: [lillarogers.com](http://lillarogers.com)



ILLUSTRATION: *Farm*

ASSIGNMENT: A personal piece created for the Surtex surface and pattern trade show.



JON CANNELL DESIGN & ILLUSTRATION

T: 425.922.3514 / E: [joncannelldesign@gmail.com](mailto:joncannelldesign@gmail.com) / W: [jcannelldesign.com](http://jcannelldesign.com)

*Illustration Represented by Lilla Rogers Studio*

T: 781.641.2787 / W: [lillarogers.com](http://lillarogers.com)



ILLUSTRATION: *Kaleidoscope*

ASSIGNMENT: A personal piece created for Lilla Roger's Art Menagerie this year.



JON CANNELL DESIGN & ILLUSTRATION

T: 425.922.3514 / E: [joncannelldesign@gmail.com](mailto:joncannelldesign@gmail.com) / W: [jcannelldesign.com](http://jcannelldesign.com)

*Illustration Represented by Lilla Rogers Studio*

T: 781.641.2787 / W: [lillarogers.com](http://lillarogers.com)



ILLUSTRATION: *Mason Jar Head*

ASSIGNMENT: A personal piece created for Lilla Roger's Art Menagerie this year.



JON CANNELL DESIGN & ILLUSTRATION

T: 425.922.3514 / E: [joncannelldesign@gmail.com](mailto:joncannelldesign@gmail.com) / W: [jcanelldesign.com](http://jcanelldesign.com)

Illustration Represented by Lilla Rogers Studio

T: 781.641.2787 / W: [lillarogers.com](http://lillarogers.com)



CLIENT: *Starbucks Coffee Company*

ASSIGNMENT: Various Starbucks gift cards designed and illustrated for the Holiday season.



**JON CANNELL DESIGN & ILLUSTRATION**

T: 425.922.3514 / E: [joncannelldesign@gmail.com](mailto:joncannelldesign@gmail.com) / W: [jcannelldesign.com](http://jcannelldesign.com)

*Illustration Represented by Lilla Rogers Studio*

T: 781.641.2787 / W: [lillarogers.com](http://lillarogers.com)



CLIENT: *Kashi Foods*

ASSIGNMENT: A series of illustrations that I worked on for Kashi Foods to be used as online games for kids. Kashi was launching their frozen dinner line and wanted to highlight the ingredients that went into each dish. I had to disguise the various ingredients within the illustrations. The participant only had a black and white line art illustration to start with and then as they guessed where the ingredients were the scene revealed itself in full color.



**JON CANNELL DESIGN & ILLUSTRATION**

T: 425.922.3514 / E: [joncannelldesign@gmail.com](mailto:joncannelldesign@gmail.com) / W: [jcannelldesign.com](http://jcannelldesign.com)

*Illustration Represented by Lilla Rogers Studio*

T: 781.641.2787 / W: [lillarogers.com](http://lillarogers.com)



ILLUSTRATION: *Australian flora and fauna*

ASSIGNMENT: A personal piece that I created depicting Australian fauna and birds.



JON CANNELL DESIGN & ILLUSTRATION

T: 425.922.3514 / E: [joncannelldesign@gmail.com](mailto:joncannelldesign@gmail.com) / W: [jcanelldesign.com](http://jcanelldesign.com)

*Illustration Represented by Lilla Rogers Studio*

T: 781.641.2787 / W: [lillarogers.com](http://lillarogers.com)