



**March 2021**

**30322 Via Con Dios  
Rancho Santa Margarita, CA 92688  
(949) 858-0307  
[www.clcrsm.org](http://www.clcrsm.org)**

## Community News



Dear members and friends of CLC,

I've read these or similar words in many places and seen the reality in people's lives, "Everyone is broken."

We desire wholeness, but this world takes a toll on us and we carry the scars of life. Our bodies are broken. Our emotions are broken. Guess what? Our minds are broken, too.

Pastor Rick Warren has written, "If your liver stops working, you can go to a doctor... If you have a broken bone, you can get it set. We don't look down at people who get sick. We don't second-guess the fact that they need medicine. We don't tell them

they need to pray harder."

But what do we say to people with mental health challenges?

Mental health has been stigmatized for far too long. But our brain is just another organ like the heart or lungs or kidneys. Remember that our physical, mental, and spiritual health are inter-connected.

According to the National Alliance on Mental Illness, 1 in 5 Americans experiences mental illness, and nearly 10 million Americans live with mental illness.

Every single one of us knows someone with mental health challenges.

Yet, for some reason, the stigma surrounding mental illness is profoundly and deeply ingrained in our culture. It's even in our churches. Many people believe they have to hide their mental illnesses from their church families. That just makes the problem worse and can lead to despair.

So what can we do about this? Here are some practical suggestions:

- Include in your prayers people living with mental illness, naming the real issues of depression, anxiety, ADHD, PTSD, eating disorders, bipolar disorder, suicidality, and schizophrenia.
- Hold on to the promises of scripture that nothing can separate us from the love of God in Christ Jesus (Romans 8:39) and that even though we walk through the valley of the shadow of mental illness, God is with us (Psalm 23).
- Encourage people to know their mental health status by using [a free online mental health screening](#)
- Show God's love and compassion for people living with mental illness and their loved ones. Listen with empathy. Don't judge.



- Know that mental health challenges impact our relationships, our partners, our family members, our friendships, and our loved ones. Symptoms of mental illness impact how we communicate and how we relate to others, and how we connect. It can be hard for someone going through a mental health crisis to know how to get help or be able to ask for help.
- Educate yourself about mental health. Get certified in [Mental Health First Aid](#), which is now a virtual training that will prepare you for how to respond to a mental health crisis.
- Become a stigma buster. Be mindful of the language you use and how you talk about mental health. Help to normalize the full spectrum of mental health experiences by acknowledging that for many of us our mental health can be fluid, changing day to day, or even hour by hour. It's okay to not be okay.
- Pray for people to be connected to affordable, quality mental healthcare.
- Advocate for mental health services in your local community. Ask your elected officials to provide funding to mental health services and to provide mental health professionals in the public schools.
- Speak up and break the silence about mental illness. Connect to mental health resources in your community. Create spaces for support so that no one experiences extreme forms of loneliness resulting from stigma and shame. Invest in your own mental wellness by being proactive to care for your whole self: mind, body, and spirit. Know that you are not alone and that you are loved.
- Faith communities can create healing circles where it is safe to share our stories without fear, shame or judgement. Contact me if you would like to help start a spiritual support group where people have the opportunity to check-in confidentially, share how we are doing, and get prayer support.
- The church can help be a protective factor by communicating and showing people that God loves them as they are. If you are in crisis, call the toll-free National Suicide Prevention Lifeline at 1-800-273-TALK (8255), available 24 hours a day, 7 days a week. The service is available to anyone. All calls are confidential.



My prayer is that God will use us to be instruments of peace, healing, and love.

Serving with you in Christ,

Pastor Marty

## **New Worship Service Schedule**

Starting this month, we are offering two outdoor worship services and a live streaming worship service in between.

**8:30 AM & 10:30 AM Outdoor Patio Worship**  
**9:30 AM Premiere of YouTube Livestream Worship Service**



## Treasurer's Report

JANUARY 2020	2021 YTD ACTUAL	2021 YTD BUDGET
Receipts—Offerings	\$ 48,599	\$ 43,982
Net Receipts—Preschool	6,617	5,123
Receipts—Other	<u>151</u>	<u>165</u>
Total Receipts	\$ 55,367	\$ 49,270
Total Operating Expenditures (Non-Preschool)	( 39,782)	( 42,411)
Excess Receipts over		
Expenditures (Net Operating Income)	\$ <u>15,585</u>	\$ <u>6,859</u>
Loss on Sale of Stock	( 12)	(0)
Transfers to Dedicated Accounts	( 0)	( 0)
Total Net Revenue	\$ <u>15,573</u>	\$ <u>6,859</u>

Offerings	
Charitable Grants	\$21,935
Non-EFT Offerings	\$12,133
EFT Offerings	\$12,483
Non Cash Offerings	\$ 2,048
Total	\$ 48,599

**Payroll Protection Program** loan, totaling \$151,527, was forgiven, effective 1/27/2021.

**Liquid assets** available to meet expenses totaled \$74,656 on 1/31/2021 (excludes dedicated funds).

**Offering income** was \$4,617 more than budgeted for January. Higher offerings have helped to offset the loss of preschool income.

**Preschool net income** was \$1,494 more than budgeted for January. Licensing and health officials continue to limit our enrollment.

**Other Receipts** included specified gifts of \$54 for the Long-Term Maintenance Fund, \$150 for the Food Bank, \$25 for Siloe, and \$25 for the Good Samaritan Fund.

**Non-Preschool Operating Expenses** were \$2,629 less than budgeted for January. All expense categories were less than budgeted for the month except Administration. Extra costs were incurred for postage to mail year-end statements and renew anti-virus software. Administration expenses will even out over the year.

Detailed information is available upon request from Tracy Cantin ([treasurerclcrsm@gmail.com](mailto:treasurerclcrsm@gmail.com)).

### **How Can I continue Giving?**

1. You can write a check and mail it to us (Community Lutheran Church, 30322 Via Con Dios, Rancho Santa Margarita, CA 92688).
2. You can give online through the website, [clcrsm.org](http://clcrsm.org). There is a link at the top of the page that says, "Give Online". You can do a one-time donation or setup a recurring donation.
3. You can give with your phone using the Give Plus App. Just go to the App Store or Google Play and search for "Give+". The first time you login, you select your church. You will find us by searching the zip code, 92688. You can do a one-time donation or setup a recurring donation through the app.
4. You can text an offering donation to 855-949-0112. The first time you do this you will get a text back prompting you to enter your name and credit card number.
5. You can do a Zelle transfer through your online banking website. When adding the church as a payee, just enter our email address: [clcrsm@clcrsm.org](mailto:clcrsm@clcrsm.org).

If you need any help with your online giving, please contact Tracy at [treasurerclcrsm@gmail.com](mailto:treasurerclcrsm@gmail.com).

**Amazon Smile:** The church has registered on Amazon Smile. This is a great program where Amazon shoppers can designate any registered charity to receive .5% of their qualified purchases as a donation. To participate in this program, just go to **[www.smile.amazon.com](http://www.smile.amazon.com)** to sign up and choose Community Lutheran Church as your designated charity.

**Schwab Account:** The church has a Schwab brokerage account. This way members can donate shares of stock as an alternative to cash offerings. Not only can you help the church, you can also avoid paying capital gains tax on appreciated stocks.

## CLC Council Meeting Highlights

### February 2021

The February 2021 CLC Council meeting was held via ZOOM on Tuesday, February 16. Highlights from the meeting included:

- Welcome to new Council members, Cindy Hilburn and Kathie Pfeiffer.
- Audit 2021 approved.
- Additional outdoor patio worship service at 10:30 AM to be added beginning March 7, 2021.
- Church Council to resume opening and closing duties.
- Outdoor Church Council Retreat will be on March 27<sup>th</sup>.



*Please Welcome Our New  
2021 Council Members*

*Cindy Hilburn  
Kathie Pfeiffer*

Pacific Daylight Saving Time begins Sunday, March 14<sup>th</sup>. Don't forget to set your clocks ahead one hour!



# Parish Life Council Report



Hello from Heidi Wolfson and Parish Life!

I am excited thank you all for electing me to stay on as Parish Life Coordinator for another term! As we all look forward to resuming normal activities, we can now add some of our enhancements we've learned from this past year. So even though we won't have Lenten soup suppers, and it may be awhile before we resume fellowship over coffee and donuts on Sundays, we have other ways to connect and get involved in the meantime.

Our first thing on the calendar will be Easter activities! At the time of this writing, we don't yet know what they will look like, but you can be sure we will be doing something special for the children and families! I imagine I will be organizing help to fill Easter goodie bags as we've done in the past, so please stay tuned for more information about that! It's always a festive Saturday morning when we get together to create this surprise for the children.

An exciting new activity on our agenda is a Spring Boutique! Assuming we are in the Orange Tier, we will have the event on April 17. Our alternate date of May 8 is scheduled just in case we must push it out on the calendar. This will be similar to the Harvest Boutique: another great day for our neighbors and friends together at Community Lutheran! The twist is that it will be all out of doors which means we don't need to change over the Sanctuary. Instead of our in-house I, we'll have at least two food trucks serving up a wide variety of hot breakfast and lunch dishes. My mouth is already watering for the loaded fries from Salt n Pepper! Monkey Business I is the other truck that has a great menu and is also part of a wonderful organization in Fullerton that assists foster youth in transitioning into adulthood with skills. Be sure to get a bite to eat from them! We'll also have a fabulous raffle table with \$1 tickets. You pick the prize you hope to win! Another way to get involved is to be a sponsor in our Spring Catalog. Do you have a business you'd like to promote? You can pay the booth fee of \$25 and showcase yourself in the catalog posted online! All proceeds from the raffle, booth fees and sponsors will go to Laura's House. This important organization provides a shelter and many other services to victims of domestic violence. For more information about Laura's House go to [www.laurashouse.org](http://www.laurashouse.org). Outreach is creating a Lenten Project to support the shelter so this is a great way we can enhance our care.

I hope you all have been reading your newsletter and seeing the new "Behind the Scenes Spotlight" feature each month. It's a way that we can continue to get to know each other and our ongoing ministries. It began in November with Scott Kensey and the banners through the church seasons. Next we Randy Thompson and our preschool board. January featured Kathleen Smith and how Community Lutheran is involved with the RSM Food Pantry. The whole Tech Team was introduced in February and you'll see Julie Mortenson and the altar flowers in this issue. Go back and read the others if you missed them! We have a lot more lined up for feature Newsletters. It's fun to get to know our members in a different light and the ministries you might not have considered!

In the year ahead, we will find more ways to be together for fun and fellowship.

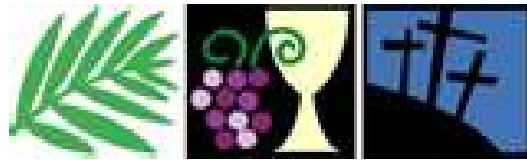




## *Wednesdays During Lent*

YouTube Streaming Worship  
Premiering at 5:00 pm

## Easter Worship & Event Schedule



## Holy Week

*Palm Sunday* ~ March 28<sup>th</sup> 8:30 AM & 10:30 AM

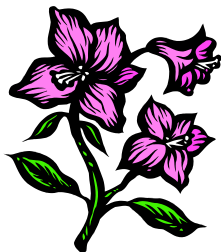
*Maundy Thursday* - April 1<sup>st</sup> YouTube Streaming Worship premiering at 5:00 PM

*Good Friday* ~ April 2<sup>nd</sup> YouTube Streaming Worship premiering at 5:00 PM

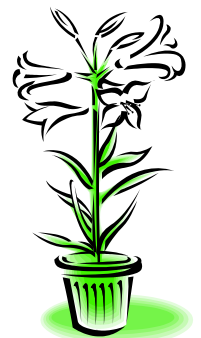
## Easter Sunday

*Easter Sunday Celebration* ~ April 4<sup>th</sup> 8:30 AM & 10:30 AM

## Easter Flowers



Easter Lilies and Azaleas are needed for our Easter Sunday decorations. You can pre-order these to be used Easter Sunday and then take it home after the 10:30 am worship service. The plants will be \$12.00. There will be order forms at the worship services.



During this season of Lent, CLC is holding a community donation drive to support Laura's House domestic violence shelter located in Orange County.

Following is a list of items the shelter needs during this time. You may order online through companies such as Amazon, Walmart, Target, Costco etc. and have them shipped directly to CLC. When ordering through Amazon Smile, Community Lutheran receives 0.5% of your order. If you can help, have these items delivered to the CLC office on or before Palm Sunday, March 28<sup>th</sup>.

Items Needed:

Twin Pillows

White Sheet Sets (Twin)

White Comforters (Twin)

White Towels (all Sizes)

Alarm Clocks with Radio

55 Gallon Trash Bags

Tall Kitchen Trash Bags

Small 4 Gallon Trash Bags

Individually Wrapped Healthy Snacks

Coffee K Cups

Coffee Filters

Olive Oil

Individually Packaged Juices (Orange, Apple)

Nutella

Bottled Water

Swiffer Wet/Dry



Thanks in advance for your support and feel free to call if you have any questions at 949-444-6554. If you would like information on Laura's House please visit [www.laurashouse.org](http://www.laurashouse.org)

Bless you,

Kathie Pfeiffer

Church Council Outreach Coordinator





Here in So Cal, March seems to be the time we all start noticing Spring colors and pretty flowers. So it makes perfect sense that our March Spotlight should focus on our altar flowers! You may have noticed that even during these difficult months we've always had a lovely bouquet to grace our altar and that is thanks to our very own administrative assistant Julie Mortensen! Several years ago we did have a florist, but she changed her business to another artistic venture, making soap and bath products. All along though, Julie had been involved in the flowers just by her care of the altar and directing the florist in color choices throughout the changing church seasons. On occasion back then she would need to get the arrangement from a local grocery store and she'd watch the florist build the arrangement. She thought to herself, "I can do

that!" Some of you already know it really isn't that easy. I've tried it and found that being creative in one area doesn't mean I can make a good floral arrangement. We are very blessed that Julie has that talent.

Julie was born in Madison, Wisconsin and moved to California with her family in the early 1970s. They eventually settled in Mission Viejo. Julie returned to this area from the high desert over 23 years ago when her daughter Elizabeth Conner was four. They began attending Community Lutheran when they moved to RSM and Elizabeth was enrolled in Saddleback Children's Center. Eventually, her job at an electronics company got eliminated and God opened another door for her with a part-time position as a lay assistant to Pastor Greg. When another position opened, it all evolved into her current job running the church office. Besides the administrative work, she lends her knack for DIY projects to anything that needs doing such as stepping up to take on the altar flowers ministry. She is also giving our metal patio furniture new life on the back patio!



If you have a special occasion on the calendar, you might like to sign up for the altar flowers that Sunday. Your offering of \$40 helps keep that ministry throughout the year and you get to take home the lovely arrangement after the second service! Julie pays attention to the church seasons and colors so that the arrangement is complimentary to the banners. She keeps it dignified by avoiding bows or extra embellishments and knowing which flowers will hold up and avoiding those with delicate stems. She also has to think outside the box sometimes when certain holidays, like St. Valentine's Day, take over the market with red roses! Members are welcome to provide an arrangement, should you have a something extra special in mind, but be sure to speak to Julie first to get some guidelines on height and size. She'll be happy for the break, but it does lend itself to more coordinating to ensure they are on the altar by 8am Sunday morning. To sign up for altar flowers, see the large calendar on the table Sunday mornings, or call or email Julie.

I asked if she had any tips for us at home who might just want to make a little arrangement for ourselves. Her advice is: Trader Joes has great flowers, use the flower food packet that comes with a bouquet, refrigerate your bouquet to keep it fresh, and be sure to change out the water and add a new packet of crystals. I think I'll just sign up for altar flowers and enjoy taking the bouquet home. Thanks Julie!





# CLC Children's Ministry Monthly News

## CLC Happenings

Welcome to our CLC Children's Ministry monthly newsletter! We have added a new Friday night program called LOL (Living Out Loud) for our 5 to 7 year old children. We know that some kids are on the older end of their grade and some are on the younger end. We purposely left that up to you which group your child can join. Check out the new times, dates, and ages below for specific children's ministries. Please feel free to reach out anytime with thoughts, questions or ideas.

Josiahclcrsm@gmail.com  
Josiah Canto, Director of Youth and Family Ministry

## Family Hike

Please join us for a family hike in beautiful O'Neill Regional Park at 12pm on March 7th! We'll be meeting on the road across from the church.

<https://www.eventbrite.com/e/children-and-family-hike-registration-141759874601>



## Important Dates

All Kids Programs are on Friday night from 5-7:30 pm

-Kids Night Out: Ages 2.5 –4, **March 5th**

-Living Out Loud: Ages 5 –7, **March 12th**

-JAM: 2<sup>nd</sup> and 3<sup>rd</sup> grades, **March 19th**

-Fearless: 4<sup>th</sup> and 5<sup>th</sup> grades, **March 26th**

**Sunday School (Preschool-5<sup>th</sup> grade)**

**-Sunday School in person during Sunday morning Worship  
8:30 and 10:30 am**

**-Sunday School Zoom: 11:15-11:45 am**

**March 7<sup>th</sup>, 14<sup>th</sup>, 21<sup>st</sup>, 28<sup>th</sup>**

Join **ZOOM** Meeting

<https://us02web.zoom.us/j/89009277418?pwd=SEQ3RHNZeXhaUjNhRzlwT3NTRUJDQT09>

Meeting ID: 890 0927 7418

Passcode: sunday





## Senior High

Youth group 9<sup>th</sup>-12<sup>th</sup>

Will not meet during Lent



## CLC Beach Clean Up Day & Fire Pit

Saturday, March 6<sup>th</sup>

High School & College Ages

Register at:

<https://www.eventbrite.com/e/clc-youth-college-age-beach-clean-up-and-fire-pit-t-street-beach-tickets-142553355925>

## Pause

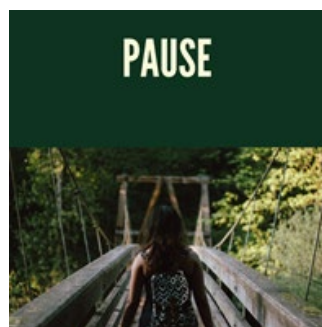
Sunday, March 7<sup>th</sup>

Ages 18-24

Back Patio at church around the fire pit

Sunday March 21<sup>st</sup>

Zoom Meeting <https://us02web.zoom.us/j/824792444>



Pause is an opportunity for our young adults to connect, refresh and recharge. If this is your first time or you would like to bring someone, you are always welcome!

## Prayer Chain

Please send your prayer requests to Pastor Marty by email or write them on the yellow slips of paper in the Welcome Notebooks and place them in the offering plate. Pastor Marty's email is [PastorMartyclcrsm@gmail.com](mailto:PastorMartyclcrsm@gmail.com)



The Book Club is scheduled to meet on Monday, March 8<sup>th</sup> at 7:00pm via **Zoom**. The **Zoom** meeting information will be forwarded to the members of the Book Club prior to the meeting.

When the Book Club meets on March 8<sup>th</sup>, we will be discussing **Mornings with Rosemary** by Libby Page. This is the story of 86 year-old Rosemary and a twentysomething reporter named Kate who form an unlikely friendship as they fight to save the local swimming pool in Brixton, London from closure.

Upcoming Books:

April 12	<b><u>Queen Bee</u></b>	by Dorothea Benton Frank
May 10	<b><u>This Tender Land</u></b>	by William Kent Krueger
June 14	<b><u>Hope on the Inside</u></b>	by Marie Bostwick

We invite anyone who has read these books to join us for some lively conversation and fun. The CLC Book Club reads a wide variety of books and welcomes all readers along with book suggestions. Please contact Julie Draper or a member of the Book Club for more information.



## 🍀🍀🍀 Quilting for Lutheran World Relief 🍀🍀🍀

Hope you haven't forgotten how to tie a knot!!! We will be tying quilts every Monday morning in March beginning March 8 from 9-12 in the sanctuary. We will be socially distancing and sitting near the open doors. If the weather is nice we might even set up on the patio.

We need lots of little leprechauns to help put a dent in the pile of quilt tops that have been lovingly sewn during the pandemic.

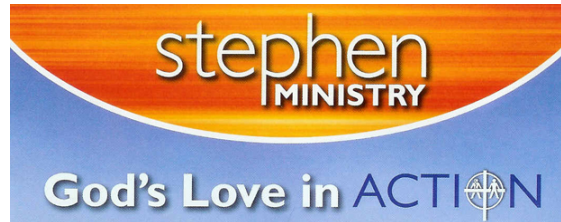
There are many of you who have expressed an interest in joining our group. Consider this your invitation to see what it's all about! If you are interested or have any questions please contact Kathy Anderson at [clcrsm@gmail.com](mailto:clcrsm@gmail.com)

YOUNG @



Hopefully it won't be long before we have all received our COVID-19 vaccines. Whoever would have thought that being a senior would have the extra benefit of getting a shot in the arm?!!

There is nothing planned as yet, but get ready to "PAR-TAY" soon!



### ***Stephen Ministry in a Nutshell...is Christ caring for people through people***

Stephen Ministry gives congregations like Community Lutheran a practical and effective way to equip people as Stephen Ministers – laypeople who share Christ's healing love with those who are hurting in the congregation and community.

People receive the care they need – those going through challenges in life are connected with a Stephen Minister, who listens, cares, prays and embodies Christ's presence. Pastors no longer bear the caring ministry load alone. They know that members are bearing one another's burdens, deepening and expanding their congregation's caring ministry.

If you or someone you know would like the caring support of a Stephen Minister, contact Pastor Marty. To connect with one of our Stephen Ministry Leaders; Pat Weber, Gay Chessell, Kevin Peterson or Brent Anderson please call the church office at (949) 413-8584 or email [clcrsm@gmail.com](mailto:clcrsm@gmail.com).



**Caught Serving.....**

**A special thanks to:**

- Raul Parra for repairing church office window frames
- Andy and Nadine Nakatani for trimming vines on church patio