

An important contribution

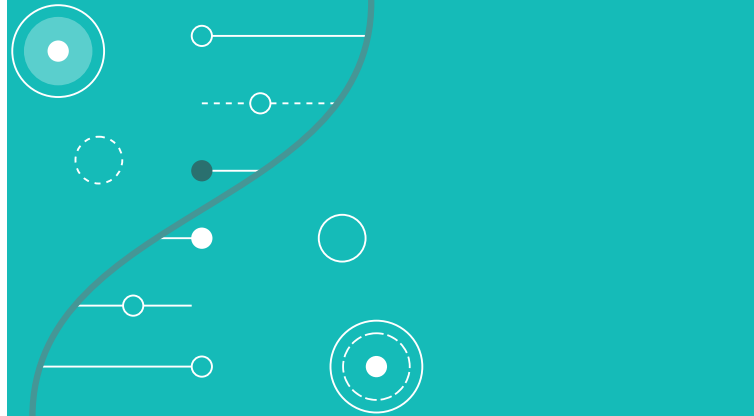
Today's flu vaccines are updated each year to prevent infection with the specific strains of the flu that scientists and health officials expect to be common that year. It takes several months to make the vaccines and their effectiveness depends on how well they match the strains of the flu virus that are circulating.

Recent advances in mRNA-based vaccines, like the COVID-19 vaccine, have taught us more about how mRNA technology can be used to develop vaccines. mRNA vaccines take less time to make. This means it could be easier to produce vaccines each season that are better matched to the most common flu strains.

About the study

The mRNA Flu Vaccine Phase 3 Study will help us learn if an investigational vaccine is safe and can help the body produce antibodies which may help fight off the flu.

Your participation in this research study will not only help advance a potential mRNA flu vaccine but will support investigational vaccine development for other infectious diseases. So, thank you for taking the time to learn more.



Ready to learn more?

Contact the study team:

**Ascension St. John Hospital
Vaccine Research Unit**

313-343-6311

IDResearchStJohn@Ascension.org

Ascension St. John Hospital
Vaccine Research Unit
19251 Mack Avenue, Suite 380
Grosse Pointe Woods, MI 48236

313-343-6311

[Or visit www.fluvaccinestudy.com/mrnaphase3 for more information.]



Could you be part of the
next vaccine breakthrough?

mRNA vaccines have changed the way we
fight infectious diseases.

Introducing Pfizer's phase 3 research
study for an investigational flu vaccine
using mRNA technology.



Who can take part in the study

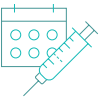
This study is enrolling people who:



Are at least 18 years of age



Are generally healthy or have stable chronic conditions



Have not received an investigational or licensed flu vaccine in the last six months

There will be other study requirements the study team will discuss with you if you participate in this study.

Tomorrow's breakthroughs start today with you

Diversity in study participants is important to better understand how potential vaccines work in different people. Race, ethnicity, age, and sex can all impact how different people respond to the same vaccine.

When you participate in a study, you're helping to represent both your community and all people who are affected by flu and other infectious diseases. Your participation could make a difference.

Your time in the study

If you meet the study criteria, you will be randomly assigned (like rolling dice) to receive either the investigational flu vaccine or a licensed flu vaccine approved by health authorities at your first study visit. You have an equal chance of receiving either the investigational vaccine or the licensed flu vaccine. You and certain members of the study team will not know which vaccine you will receive.

After you receive your study vaccine, the study team will perform some tests and monitor your health periodically.

How long will participants be in this research study?



About six months

How many study visits are required?



At least three visits to the study site, including a vaccination visit and two follow-up visits

Your journey and your choice

Your safety is the top priority of this research study. Before you join the study, you will be given all of the details about taking part, including potential benefits and risks. Your health will be carefully monitored throughout the study by the study team.

If this research study is a good fit and you decide to take part, it's important to remember that this is your journey and your choice. You are free to stop being in this study at any time for any reason.

Study-related costs are covered

The study vaccine and any study-related procedures will be provided at no cost. You will also be reimbursed for any reasonable expenses that you have as a result of taking part in this study. This may include parking, meals, or other travel-related expenses.

Throughout the study, you will be closely monitored for symptoms of the flu. If you develop any flulike symptoms, such as a sore throat, cough, or difficulty breathing, you may have an additional visit so we can check on your health. This may happen in person or over the phone.