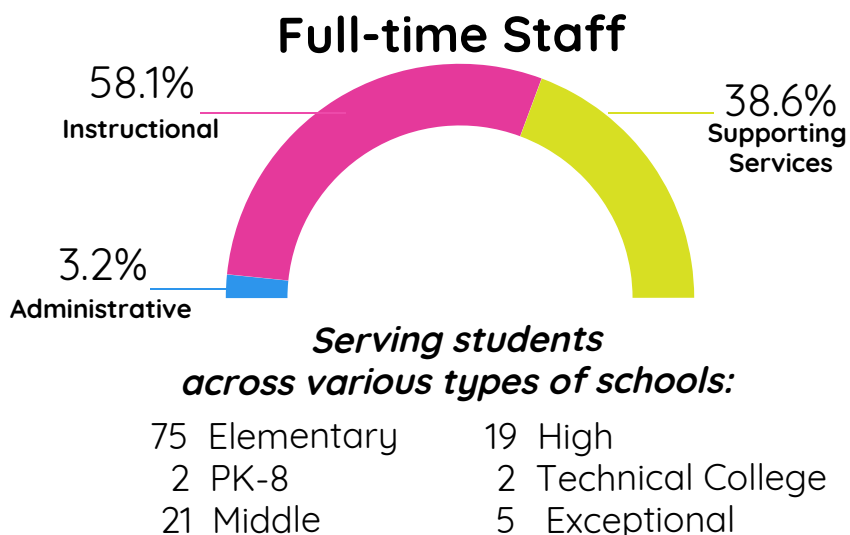
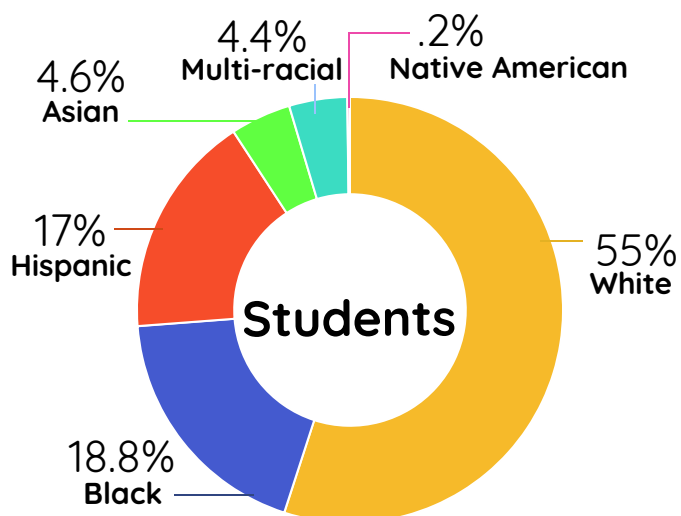
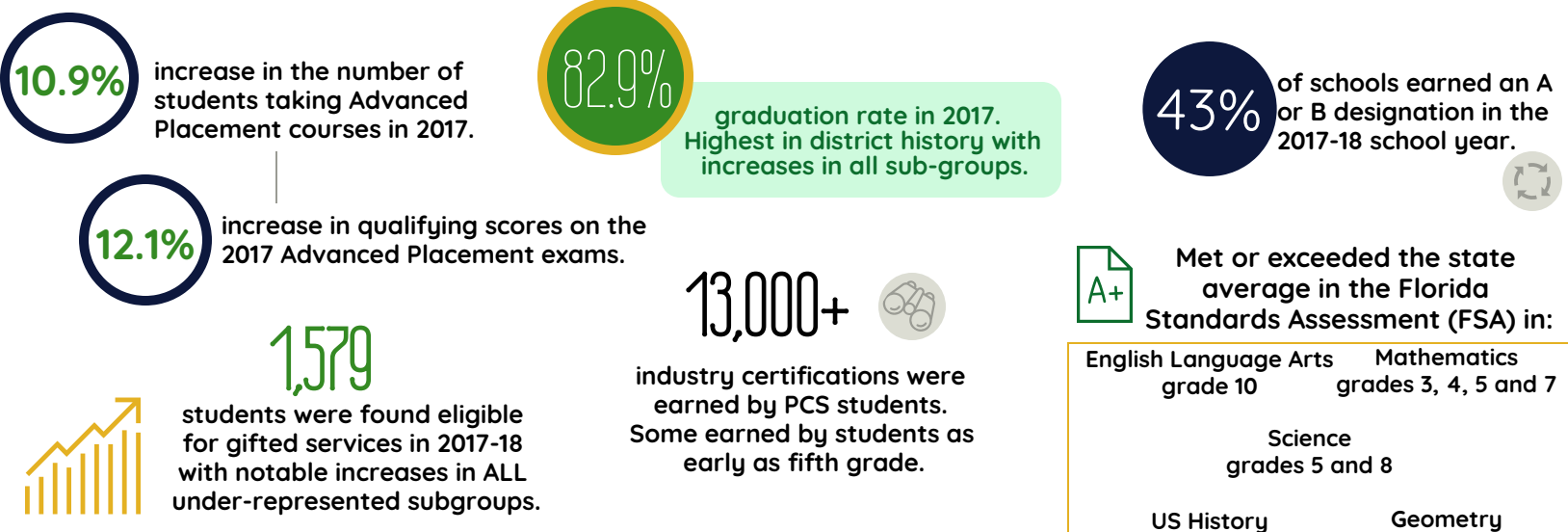


Demographics



Points of Pride



Strategic Initiatives



The district's comprehensive, multi-year plan to close the achievement gap between black students and their peers that encompasses six high-leverage goal areas with corresponding action plans.

Personalized Learner Pathway (PLP)

An electronic platform that connects students with learning resources tailored to their specific needs is available to all 100,000+ students in Pinellas County any time, anywhere.



Restorative Practices



A districtwide framework and implementation that emphasizes positive relationship building, restorative dialogue and responsive classrooms that meet the needs of students and decrease the need for reactive discipline procedures for students.



A systemic initiative and commitment to provide high-achieving students and their families with a personalized path to college success.

5 out of 6

goal areas saw a narrowing of the gap in 2017-18, the first year of implementation.