



The Southwest Branch
of The International Dyslexia Association
Presents

DYSLEXIA SOUTHWEST 2020

Annual SWIDA Conference
- Professionals -

February 21 & 22, 2020
Friday Evening and Saturday All-Day

Sandia Resort
Albuquerque, New Mexico



SWIDA

sw.dyslexiaida.org

33rd Annual SWIDA Conference 2020

2020 CONFERENCE COMMITTEE

Montine Gibbons: Conference Co-Chair
Trish Aragon: Conference Co-Chair
Sue Fitzmaurice: Program and Speaker Arrangements, Publicity
Tawnya Yates: Program and Speaker Arrangements, Website
Christine Quesada: Publicity
Chamisa Roehrig: Registration, Conference Scholarships
Angelia Henderson: Exhibits and Advertising
Tara DeBuck: Hospitality, Volunteers
Zoe Alvarez: Fundraising
Claudia Gutierrez: Fundraising
Katrina Radosevich Gallegos: Raffle
Martha Steger: CEUs

The International Dyslexia Association® (IDA) is an international organization that concerns itself with the complex issue of dyslexia. IDA membership consists of a variety of professionals in partnership with individuals with dyslexia and their families. They actively promote effective teaching approaches and intervention strategies for the educational management of dyslexia. The organization and its branches do not recommend or endorse any specific speaker, school, instructional program or remedial method.

The Southwest Branch of The International Dyslexia Association® is a non-profit organization whose mission is to provide information to the public regarding dyslexia and to support the rights of people with dyslexia so that they may receive appropriate education and lead fulfilling lives. The branch disseminates information, publishes a newsletter, provides referral services, and offers workshops, professional trainings, and conferences. The Branch's geographical area covers all of New Mexico and the El Paso, Texas area.

Southwest Branch The International Dyslexia Association

2019 Executive Committee

2019 Executive Committee
Claudia Gutierrez, President
Erin Brown, Vice-President
Amy Stanton, Recording Secretary
Zoe Alvarez, Corresponding Secretary
Cammie Archuleta, Treasurer

2019 Board of Directors

Trish Aragon, Sally Blair, Sue Fitzmaurice, Montine Gibbons, Mary Poirier Gilroy, Gina Hawryluk, Angelia Henderson, Amy Miller, Christine Quesada, Tawnya Yates

2019 Advisory Council

Melissa Behrens-Blake, Jenny Coffey, Douglas Cox, Carolee Dean, Sandra Dillon, Tamara Ogilvie, Glenda Rodriguez, Steven Sanchez, Megan Shanley, Martha Steger, Senator Mimi Stewart

Chamisa Roehrig, Office Manager

TABLE OF CONTENTS

Registration Rates	Page 3
Continuing Education Hours	Page 3
Conference at a Glance	Page 4
Session Descriptions	Page 5 - 9
Meet the Speakers	Page 10-11
Directions and Map to Sandia Resort	Page 12

REGISTRATION & RATES

Register before February 3rd, 2020 for Early Bird Rates:

IDA Members: \$165

Non-members: \$190

Students: \$95

*If registering after February 3, add \$25

CONTINUING EDUCATION HOURS

CEUs will be offered for CALTs and SLPs. ALL attendees will receive a Certificate of Attendance.

A link to a downloadable *Certificate of Attendance* and *Conference Evaluation* will be emailed to all registrants immediately following the conference.

- Earn 1.5 CEUs for the Friday Evening event when you register for Saturday's Conference
- Earn 6.0 CEUs for Saturday's Sessions

33rd Annual SWIDA Conference 2020

Dyslexia Southwest 2020 - Professional Conference			
Schedule of Events & Room Assignments			
Friday, February 21			
5:30 – 6:30 pm	Mix & Mingle / SWIDA Awards		
6:30 - 8:00 pm	Conference Kick-off Address		
	Dr. Nadine Gaab <i>Developmental Dyslexia and Reading Impairments: Neurobiology, Heredity, and Early Identification Strategies</i> BALLROOM C	Erin Brown <i>Dyslexia 101: Understanding the Basics</i> EAGLE ROOM	
Saturday, February 22			
7:15 - 8:00 am	Check-In & Breakfast BALLROOM D		
8:00 - 9:30 am	Keynote Address: Dr. David Kilpatrick <i>Recent Advances in Understanding How Students Remember the Words They Read (and Why So Many Struggle)</i> BALLROOM D		
9:30 - 10:00 am	Exhibits & Break		
10:00 - 11:30 am	S1) Dr. Nadine Gaab <i>Screening for Dyslexia and Other Reading Disabilities: The WHY, WHEN, WHOM and HOW</i> BALLROOM C	S2) William Van Cleave <i>From the Ground Up! Building Foundational Paragraph Skills</i> BALLROOM B	S3) Erin Brown <i>Dyslexia 101: Understanding the Basics</i> BALLROOM A
11:45 - 12:45 pm	Lunch & Exhibits		
1:00 - 2:30 pm	S4) Dr. David Kilpatrick <i>Effective Reading Instruction and Intervention for Struggling Readers</i> BALLROOM C	S5) William Van Cleave <i>Words, Words, Words! Best Practices in Vocabulary Instruction</i> BALLROOM B	<<< Please choose Dr. Kilpatrick or William Van Cleave (Sessions S4 or S5)
2:30 - 2:45 pm	Exhibits, Break & Raffle Drawing		
2:45 - 4:15 pm	S6) Dr. David Kilpatrick <i>Assessing Dyslexia and Other Reading Problems</i> BALLROOM C	S7) William Van Cleave <i>Morphology Matters!</i> BALLROOM B	S8) Zoe Ann Alvarez & Tawnya Yates <i>Structured Literacy in the General Education Classroom</i> BALLROOM A

Professionals Conference - Friday Evening February 21, 2020

5:30 pm – 6:30 pm

MIX & MINGLE / SWIDA AWARDS

Relax and enjoy refreshments with friends and colleagues as we honor our annual SWIDA Award recipients. Take some time to wind-down from the week and get ready for our Conference Kick-Off!

6:30 pm – 8:00 pm

CONFERENCE KICK-OFF ADDRESS (SELECT ONE)

Developmental Dyslexia and Reading Impairments: Neurobiology, Heredity, and Early Identification Strategies

Presenter: Nadine Gaab, Ph.D.

This session will cover the neurobiology and underlying brain mechanism of typical and atypical reading development. It will give a broad overview about the brain and the different components of the reading network and how the brain develops differently if a child is a struggling reader. We will also discuss plasticity following intervention strategies and why early identification is important from a neurobiological perspective.

AUDIENCE: This session is designed for those interested in the neurobiology and underlying brain mechanisms of typical and atypical reading, etc. Dyslexia Therapists, Dyslexia Specialists, SLPs, Diagnosticians, School Psychologists, Administrators, Instructional Coaches, Interventionists, Teachers

Dyslexia 101: Understanding the Basics

Presenter: Erin Brown, CALT, C-SLDS, I-CALP

Dyslexia 101 is an introductory session, which focuses on developing a foundational understanding of dyslexia. Participants will learn about common characteristics, misconceptions, and considerations for early identification. Mini-simulation exercises will be used to explore word recognition difficulties and the neurobiological definition of dyslexia. Useful accommodations and supports will be discussed, as well as effective instructional components. **(This session will be repeated Saturday)**

*For primary general education teachers seeking information about Structured Literacy in the general education setting, please also see session S8. Structured Literacy in the General Education Classroom

AUDIENCE: This session is intended as an introduction to dyslexia. General Education and Special Education Teachers, Interventionists, SAT Chairs, Administrators

Professionals Conference - Saturday Sessions February 22, 2020

7:15 am - 8:00 am REGISTRATION CHECK-IN & BREAKFAST

8:00 am – 9:30 am KEYNOTE ADDRESS

Recent Advances in Understanding How Students Remember the Words They Read (and Why So Many Struggle)

Presenter: David Kilpatrick, Ph.D.

Dr. Kilpatrick's presentation will focus on how children learn to read words and why some children struggle. Our assumptions about how reading works guides our assessment and instructional efforts. The focus will be on how students remember the words they read, which directly influences the size of a student's sight vocabulary and thus their reading fluency.



You can Join IDA Now!

<https://dyslexiaida.org/membership-account/membership-levels/>

Professionals Conference - Saturday

10:00 am – 11:30 am BREAK-OUT SESSIONS (SELECT ONE)

S1 Screening for Dyslexia and Other Reading Disabilities: The WHY, WHEN, WHOM and HOW

Presenter: Nadine Gaab, Ph. D.

We will discuss WHY children should be screened before or around the start of kindergarten using a neurobiological perspective. We will further discuss HOW we should screen, WHEN we should screen and WHOM should be screened. Practical tips for screening will be provided.

AUDIENCE: General Education and Special Education Teachers, Administrators, Interventionists, Instructional Coaches, SAT Chairs, Dyslexia Therapists, SLPs, Diagnosticians, School Psychologists

S2 From the Ground Up! Building Foundational Paragraph Skills

Presenter: William Van Cleave

Struggling students often have difficulty getting their ideas down on paper. Regardless of genre, student writing relies on the ability to generate a good paragraph. In this hands-on, interactive workshop, participants learn a structured, sequential approach to teaching the basic and expanded paragraph, including idea generation, categorization, and writing topic, supporting, and concluding sentences as well as transitions. They work with gradual release instruction and teacher modeling of the writing process. They practice with each level of instruction and leave with strategies they can use with their students the very next day!

AUDIENCE: General and Special Education Teachers, Interventionists, Instructional Coaches, Dyslexia Therapists, SLPs

S3 Dyslexia 101: Understanding the Basics

Presenter: Erin Brown, CALT, C-SLDS, I-CALP

Dyslexia 101 is an introductory session, which focuses on developing a foundational understanding of dyslexia. Participants will learn about common characteristics, misconceptions, and considerations for early identification. Mini-simulation exercises will be used to explore word recognition difficulties and the neurobiological definition of dyslexia. Useful accommodations and supports will be discussed, as well as effective instructional components. (This is a repeat of Friday night's session)

*For primary general education teachers seeking information about Structured Literacy in the general education setting, please also see session S8. Structured Literacy in the General Education Classroom.

AUDIENCE: This session is intended as an introduction to dyslexia. General Education and Special Education Teachers, Interventionists, SAT Chairs, Administrators

Professionals Conference - Saturday

1:00 pm - 2:30 pm BREAK-OUT SESSIONS (SELECT ONE)

(S4) Effective Reading Instruction and Intervention for Struggling Readers

Presenter: David Kilpatrick, Ph. D.

The presentation will review and describe common approaches to reading instruction and intervention in current use that typically do not help close the gap between weak readers and their typically developing peers. Then, the most effective instructional and intervention practices from the scientific literature will be described that demonstrates that we can make great strides in helping struggling readers.

AUDIENCE: General Education and Special Education Teachers, Instructional Coaches, SAT Chairs, Dyslexia Therapists, SLPs, Diagnosticians, School Psychologists, Administrators

(S5) Words, Words, Words! Best Practices in Vocabulary Instruction

Presenter: William Van Cleave

Research indicates that vocabulary is a key component of effective literacy instruction. In this workshop, participants learn what works—and what doesn't work—in developing student vocabulary. As they explore best practices, they consider how to implement this valuable study into their work with students. They work with word selection, what students should know about the words they learn, and activities to cement vocabulary knowledge.

AUDIENCE: Teachers, Administrators, Instructional Coaches, SAT Chairs, Dyslexia Therapists, SLPs, Diagnosticians, School Psychologists

Professionals Conference - Saturday

2:45 pm - 4:15 pm BREAK-OUT SESSIONS (SELECT ONE)

(S6) Assessing Dyslexia and Other Reading Problems

Presenter: David Kilpatrick, Ph.D.

Building on the keynote, this session will present ways to enhance the assessment of children with word-reading difficulties and difficulties with reading comprehension using commercially available tests and informal assessments. It will indicate how we can pinpoint more precisely the reasons for a student's reading difficulties in order to provide more efficient intervention.

AUDIENCE: Diagnosticians, Teachers, Administrators, Instructional Coaches, SAT Chairs, Dyslexia Therapists, SLPs, School Psychologists

(S7) Morphology Matters! Using Work with Bases & Affixes to Improve Spelling and Vocabulary

Presenter: William Van Cleave

The standards reflect the research: morphology instruction is essential for developing literacy skills in students. All too soon, students are introduced to textbooks filled with longer, multisyllabic words. Even with effective basic phonics instruction, readers are often unable to handle both the increased quantity of text and its complexity. An understanding of morphology, or the meaning parts that comprise words, is valuable for the development of vocabulary and word attack skills from the earliest grades through high school. In this interactive, hands-on workshop, Van Cleave engages participants in a brief overview of the origins of our language and characteristics of the major languages of influence, an introduction to morphological awareness, and an in-depth exploration of word parts. Participants work with words, develop strategies for word exploration, understand components of a good morphology lesson, and explore how to integrate morphology into their existing content work.

AUDIENCE: Teachers, Administrators, Instructional Coaches, SAT Chairs, Dyslexia Therapists, SLPs, Diagnosticians, School Psychologists

(S8) Structured Literacy™ in the General Education Classroom

Presenter: Zoe Ann Alvarez, M.A., W.C.T, W.D.T. and Tawnya Yates, M.A., CALT

This session will explain Structured Literacy™, effective evidenced-based reading instruction for all students. This is an interactive session that will emphasize preventing reading failure in the general education setting, whether the reading difficulty is due to dyslexia or another cause. We will outline the elements of Structured Literacy™ as well as the principles that guide how these elements are taught. Additionally, attendees will develop a deeper understanding of how Structured Literacy™ is distinguished from Balanced Literacy. When students receive evidenced-based instruction in the general education classroom, reading failure can be prevented and the number of students in need of intervention can be decreased.

*Participants with little understanding of the characteristics of dyslexia are encouraged to attend Dyslexia 101: Understanding the Basics (Friday evening or Saturday) to better support their understanding during this session.

AUDIENCE: General Education and Special Education Teachers, Interventionists, SAT Chairs, Administrators, and those with an emerging understanding of Structured Literacy™.

Meet Our 2020 Conference Speakers



David A. Kilpatrick, Ph.D. is a professor of psychology for the State University of New York College at Cortland. He is a New York State certified school psychologist with 28 years experience in schools. He has been teaching courses in learning disabilities and educational psychology since 1994. David is a reading researcher and the author of two books on reading, *Essentials of Assessing, Preventing, and Overcoming Reading Difficulties*, and *Equipped for Reading Success*, and is a co-editor of a third, *The Science of Reading Development and Reading Difficulties: Bridging the Gap Between Research and Practice* (forthcoming 2019).

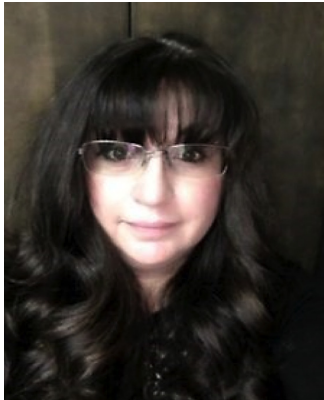


Nadine Gaab, Ph.D. is an Associate Professor of Pediatrics at Boston Children's Hospital Boston/Harvard Medical School and a member of the faculty at the Harvard Graduate School of Education. Her research within the Laboratories of Cognitive Neuroscience focuses on the development of typical and atypical language and literacy skills in the pediatric brain as well as on pre-markers of learning disabilities. The Gaablab employs cross-sectional and longitudinal designs and works closely with numerous private and public schools within the US. She is the 2019 recipient of the LDA Award (Learning Disabilities Association America) for her work on learning disabilities. In 2018, Dr. Gaab was presented with the Allan C. Crocker award for her advocacy on behalf of children with dyslexia and reading disabilities and efforts around the recent passage of the Massachusetts screening legislation. She has also been recognized by the International Dyslexia Association in her receipt of the Alice H. Garside Award for outstanding leadership in advancing the science and advocacy of dyslexia. She is a scientific advisory board member of The Dyslexia Foundation and Landmark School and a founder of the New England research on Dyslexia Society (NERDY). Prof. Gaab is a frequent speaker in the community.



William Van Cleave is in private practice as an educational consultant whose specialties include morphology and written expression. An internationally recognized speaker with an interactive, hands-on presentation style, William has presented on effective teaching practices at conferences and schools both in the United States and abroad since 1995. Recent projects include consulting with three schools as part of a literacy grant in Montana; participating on the MTSS Writing Standards Committee for the State of Pennsylvania; implementing several Trainer of Trainers projects using his sentence structure approach; and writing a series of workbooks and a companion book on developing composition skills to complement his sentence approach. The author of three books, including *Writing Matters* and *Everything You Want To Know & Exactly Where to Find It*, as well as a number of educational tools and activities, William has served as a classroom teacher, tutor, and administrator in the private school arena at various points in his career.

Meet Our 2020 Conference Speakers



Zoe Ann Alvarez has been an educator for 24 years, teaching at the elementary and middle school levels in both special education and co-teaching positions. She is currently a reading resource teacher for Albuquerque Public Schools, providing professional development in the areas of Structured Literacy, reading, and English language arts. Zoe Ann's work emphasizes the science of reading acquisition and reading instruction in both general and special education settings. Zoe Ann is a Wilson Language Trainer and a Certified Wilson Dyslexia Therapist. She has presented at a number of conferences at the local and national level, including SWIDA, NICHD, and the Urban Special Education Leadership Collaborative. Zoe Ann serves on the advisory board for New Mexico Highlands University, where she taught graduate level reading courses through a partnership program between APS and NMHU.



Erin Brown is a Certified Academic Language Therapist and IDA-Certified Structured Literacy Dyslexia Specialist who maintains a small private practice in Albuquerque, NM. As a dyslexia specialist and experienced educator, Erin has trained in a variety of evidence-based programs and techniques related to Structured Literacy. She has been a classroom teacher, reading specialist, and support interventionist in a variety of school settings. Erin has worked in the field of teacher training for ten years, including instruction and supervision of dyslexia therapists for the Multisensory Language Training Institute of NM. A board member since 2008, Erin currently serves as Vice President of the Southwest Branch of the International Dyslexia Association (SWIDA).



Tawnya Yates is a dual licensed teacher and Certified Academic Language Therapist. She has worked as a reading interventionist in the public schools, serving students with dyslexia in both general and special education settings. She has also supported teachers in observing students' reading behaviors and analyzing assessments in order to determine instructional steps. Tawnya currently supports special education teachers, helping them apply knowledge of reading acquisition as they individualize instruction for students with disabilities. Her goal is to influence teachers' perceptions of students with dyslexia so that they see the potential within their students to decode, comprehend, and participate in lessons.

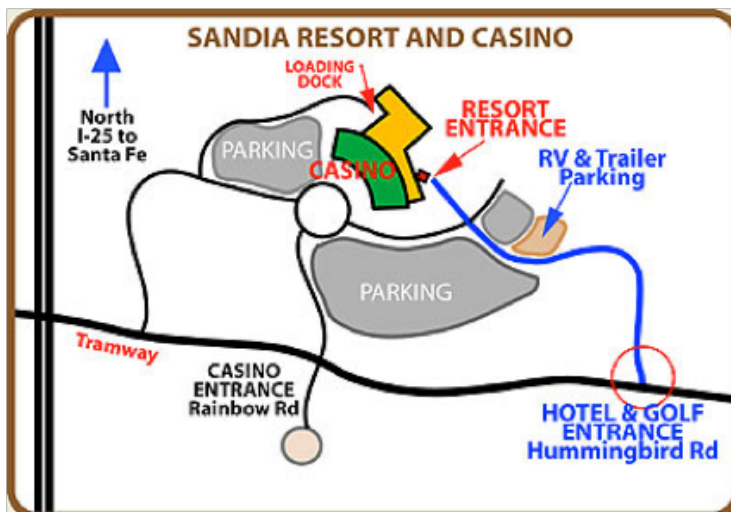
Directions to Sandia Resort & Conference Entrance

Address:

Sandia Resort, 30 Rainbow Rd NE, Albuquerque, NM

General Directions:

- 1) From the North or South take Interstate 25 and exit at Tramway (EXIT 234), head east, toward the mountain.
- 2) From the East or West take Interstate 40, merge onto I-25 North and exit at Tramway (EXIT 234), head east, toward the mountain.



Building Entrance Directions:

The Sandia Convention Venue entrance is located on the easternmost side of the building. This is also the Resort Entrance.

Note:

Entering through the east facing doors will ensure you avoid the casino entrance.