



BUILDING RESILIENT RANCHES

Workshop & Project Rollout

The Feed Store | 148 S Jacobs St, Albany, TX
February 20, 2025 @ 4:00 PM

Texas GLC and Texas A&M Center for Grazinglands & Ranch Management have launched an exciting program: The Resilient Ranch Network supports ranching operations through grazing management strategies, and monitoring forage quantity and quality, leading to positive financial outcomes. Dinner will be provided and the workshop will wrap at 8:00 PM. This program is available to ranchers in the Southern Rolling Plains, Cross Timbers, and the Northern Prairies.

Project participants will receive:

- TXGLC technical assistance
- Grazing management plans
- Rangeland monitoring: metrics that matter
- Ranching for Profit two-day school
- Travel compensation
- Stipend
- Regional coalition support



Please scan the QR code to register for the workshop and receive more information about the Resilient Ranch Network, or visit:
shorturl.at/H9eK1

For more information, contact:

Shiner Webb | 806.334.1300 | shiner@texasglc.org

Jenny Pluhar | 806.679.8729 | jenny@texasglc.org

Rebecca Tasker | 936.715.8868 | rebecca.tasker@ag.tamu.edu



TEXAS A&M UNIVERSITY
Center for Grazinglands
and Ranch Management

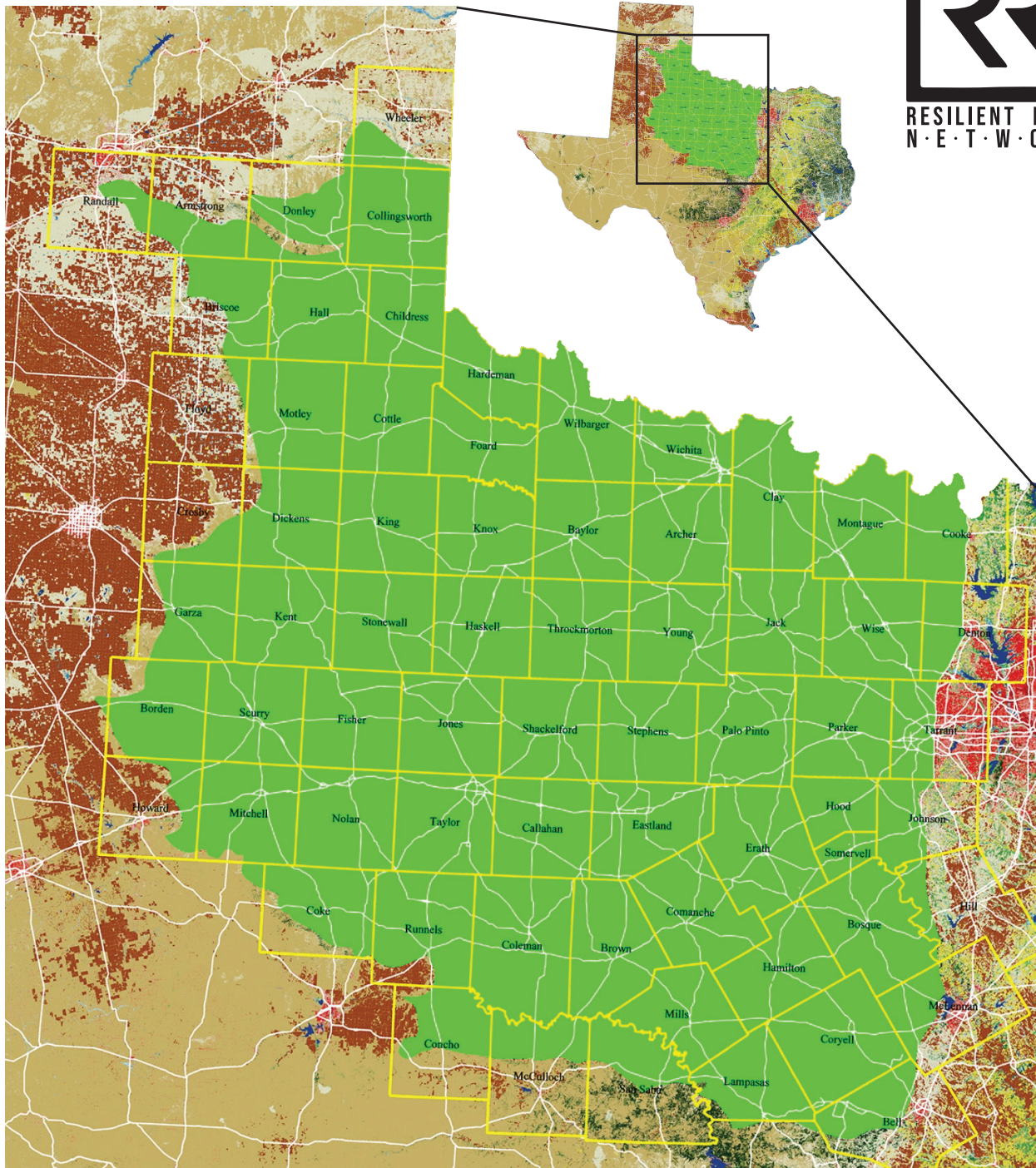


TXGLC
TEXAS GRAZING LAND COALITION
• Growing Partnerships Through Conservation •



RESILIENT RANCH NETWORK

Target Area



Texas A&M AgriLife is an equal opportunity employer and program provider. The members of Texas A&M AgriLife will provide equal opportunities in programs and activities, education, and employment to all persons regardless of race, color, sex, religion, national origin, age, disability, genetic information, veteran status, sexual orientation, gender identity, or any other classification protected by federal, state, or local law and will strive to achieve full and equal employment opportunity throughout Texas A&M AgriLife.