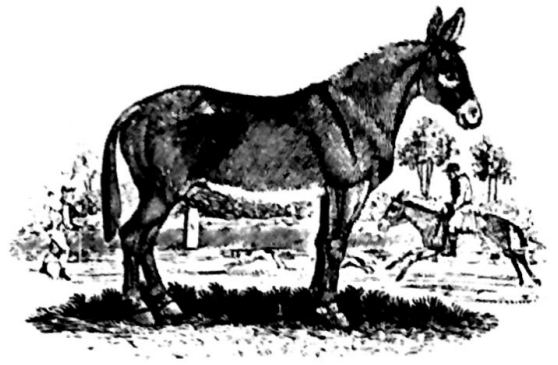


The Erie Canal

The Erie Canal opened in 1825, linking Albany to the Great Lakes port of Buffalo. The canal boats were pulled along the 340-mile route by mules or horses at a rate of three or four miles an hour. During the long hours of hauling, the mule driver's main job was to call out low bridges so that the passengers wouldn't bump their heads.



American

Moderately

1. I've got a _____ mule and her name is Sal, Fif-teen miles on the
 2. We'd bet-ter look a-round for a job, old gal, Fif-teen miles on the

E - rie Ca - nal. — She's a good old work - er and a good old pal,
 E - rie Ca - nal. — 'Cause you bet your life I'd nev - er part with Sal,

Fif - teen miles on the E - rie Ca - nal. — We've hauled some barg - es
 Fif - teen miles on the E - rie Ca - nal. — Get up there mule, — here

mf

Dm F6 G7 A7 Dm Gm7

Dm A7 Dm F6 G7 A7

Dm Gm7 Dm A7 Dm F Am

Dm7 Gm7 C7 Dm F6 G9 A7 Dm F6

in our day, Filled with lum - ber, coal, and hay, And we know ev - 'ry
comes a lock, We'll make Rome_ 'bout six o - clock, One more trip and

G7 A7 Dm F6 Gm7 A7 Dm C

inch of the way_ From Al - ba - ny_ to_ Buf - fa - lo.
back_ we'll go, Right back home_ to_ Buf - fa - lo.

Chorus

F Am Gm7 C F Am

Low bridge, ev - 'ry - bod - y down, Low bridge, for we're

Bbmaj7 C7 F Am Gm7

com - ing to a town, And you'll al - ways know your neigh - bor, You'll

Am Gm7 Fmaj7 Gm7 F C7 F

al - ways know your pal, If you've ev - er nav - i - gat - ed on the E - rie Ca - nal.

3. Oh, where would I be if I lost my pal?
 Fifteen miles on the Erie Canal.
 Oh, I'd like to see a mule as good as Sal,
 Fifteen miles on the Erie Canal.
 A friend of mine once got her sore,
 Now he's got a broken jaw,
 'Cause she let fly with her iron toe,
 And kicked him into Buffalo.

Chorus