

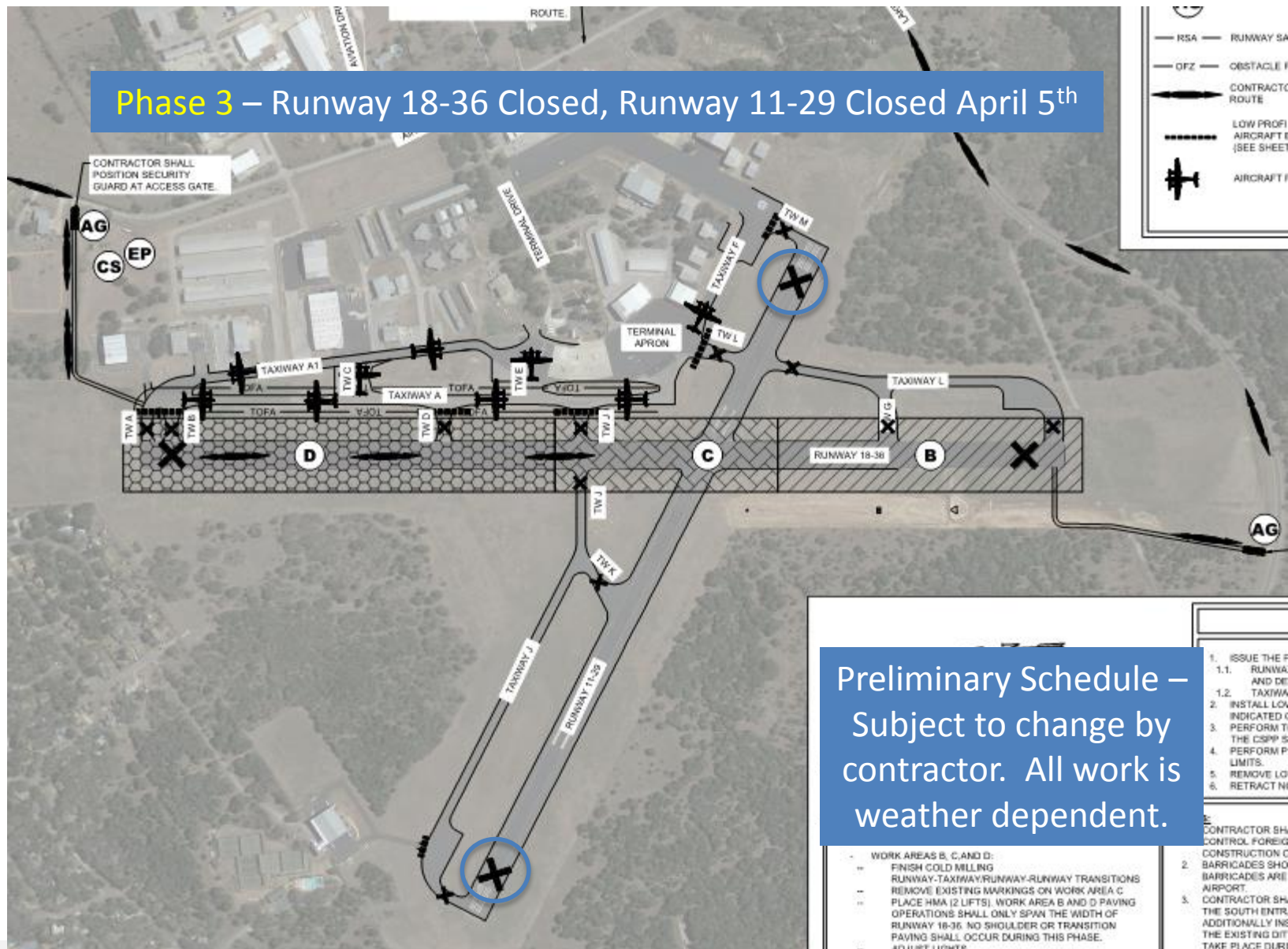
**Phase 1** – Contractor Mobilize and Stage Equipment (Feb 18<sup>th</sup>)

**Phase 2** – Runway 18-36 Closed March 4<sup>th</sup>, Runway 11-29 Open

Preliminary Schedule –  
Subject to change by contractor. All work is weather dependent.



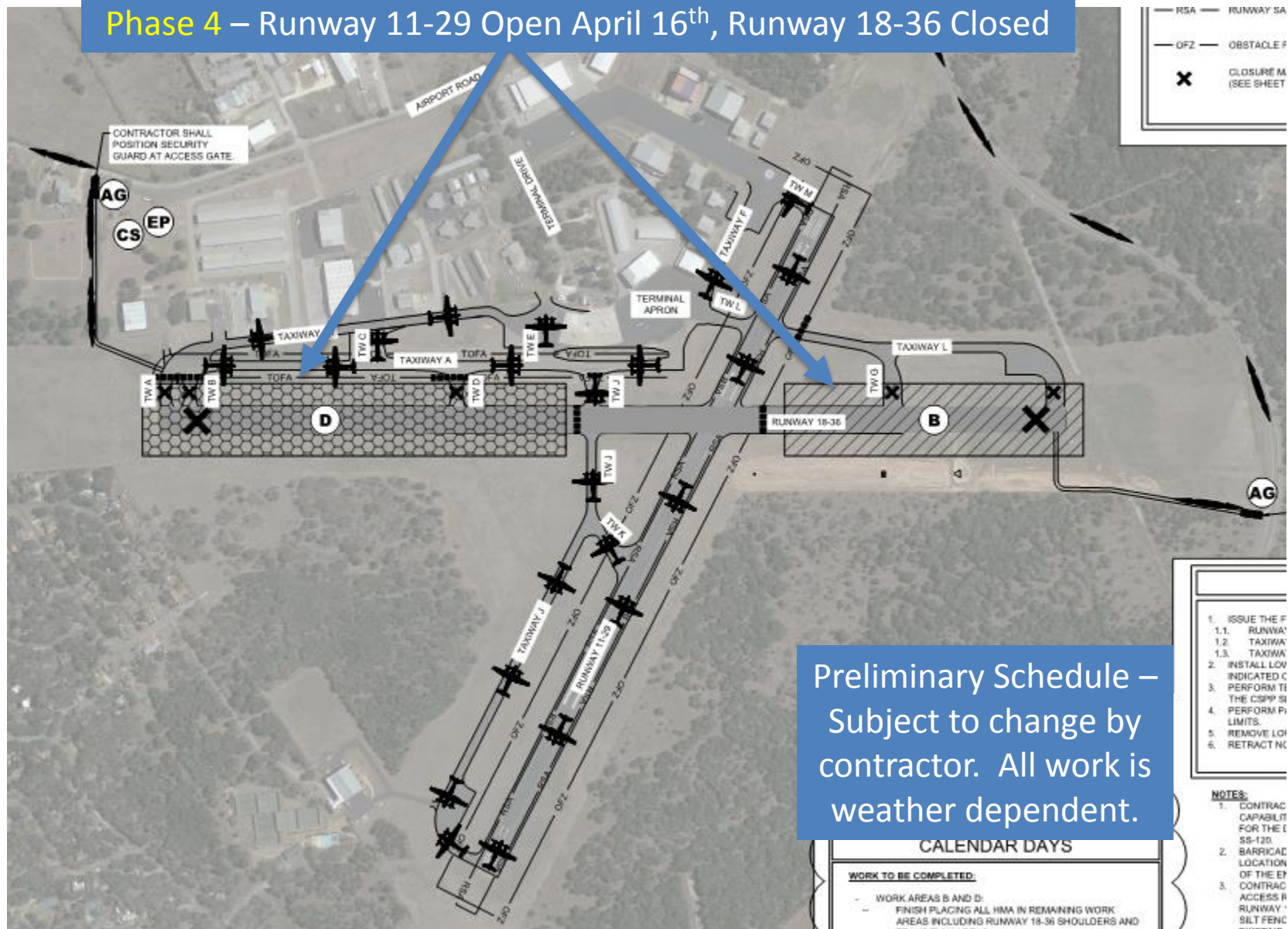
## Phase 3 – Runway 18-36 Closed, Runway 11-29 Closed April 5<sup>th</sup>



Preliminary Schedule –  
Subject to change by  
contractor. All work is  
weather dependent.

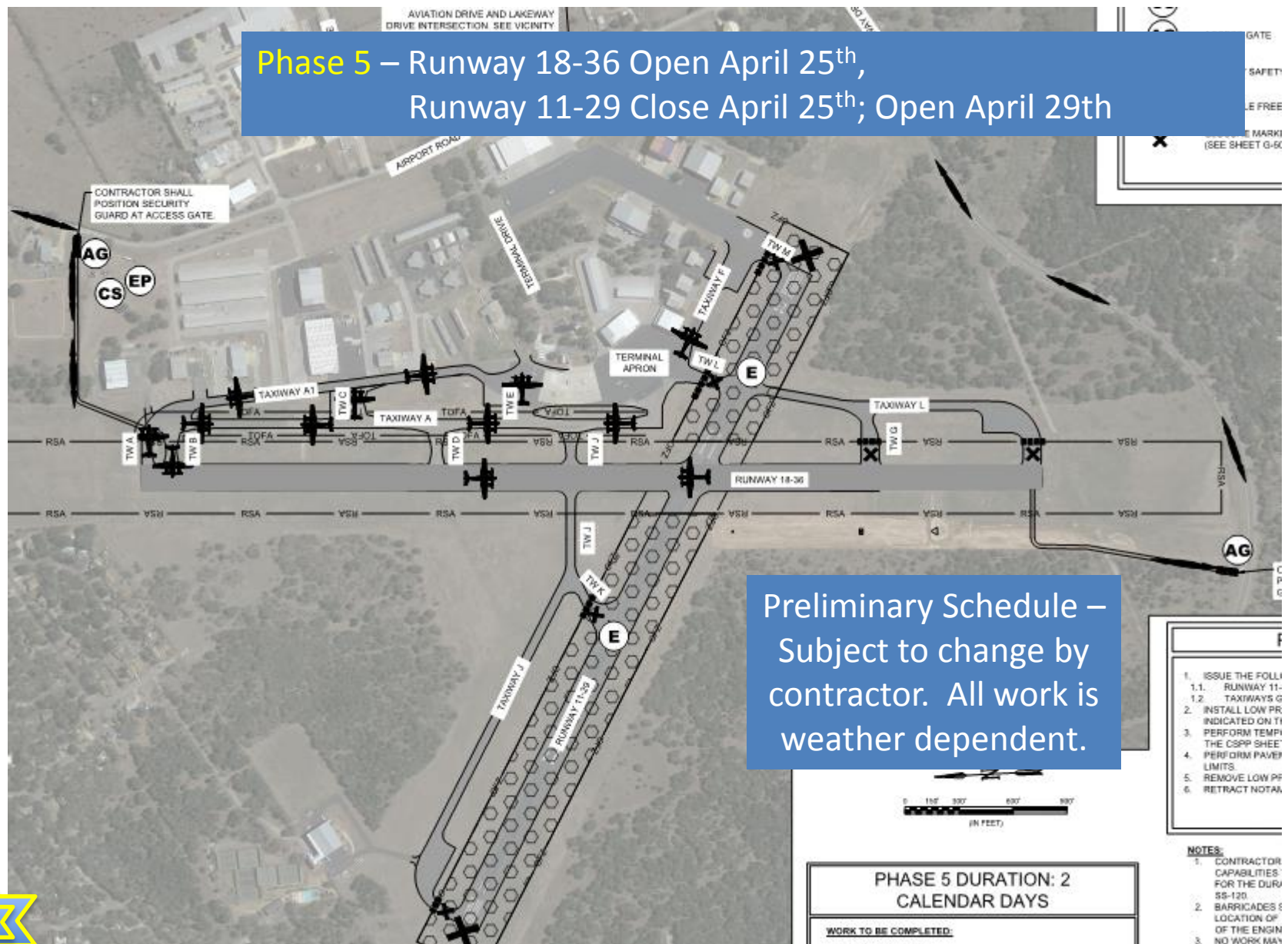


## Phase 4 – Runway 11-29 Open April 16<sup>th</sup>, Runway 18-36 Closed





**Phase 5** – Runway 18-36 Open April 25<sup>th</sup>,  
Runway 11-29 Close April 25<sup>th</sup>; Open April 29<sup>th</sup>



**Phase 6** - Runway 18-36 closed May 14<sup>th</sup> – 21<sup>st</sup> for grooving pavement and installing permanent pavement markings. Contractor will have 8 hours to complete grooving of 18-36 at 11-29 intersection.

Final Project Completion May 21<sup>st</sup>