

ALAMO RMA

*Alamo Regional Mobility Authority*

*"Moving people faster"*

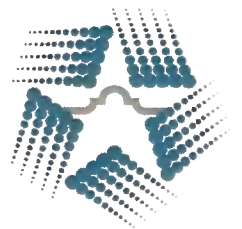
---

# **WEST MILITARY DRIVE**

JANUARY 17, 2019

# Agenda

- Alamo Regional Mobility Authority
- Vehicle Registration Fee and Projects
- West Military Drive Project

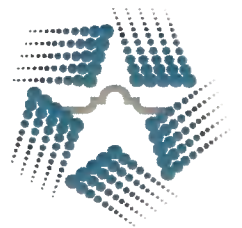


# Alamo Regional Mobility Authority

- Established by Bexar County Commissioners Court in 2004
- Seven member Board of Directors appointed by Bexar County Commissioners Court with the Chairman appointed by the Governor
- Staffing and resources are provided by Bexar County



US 281/ LP 1604 Interchange



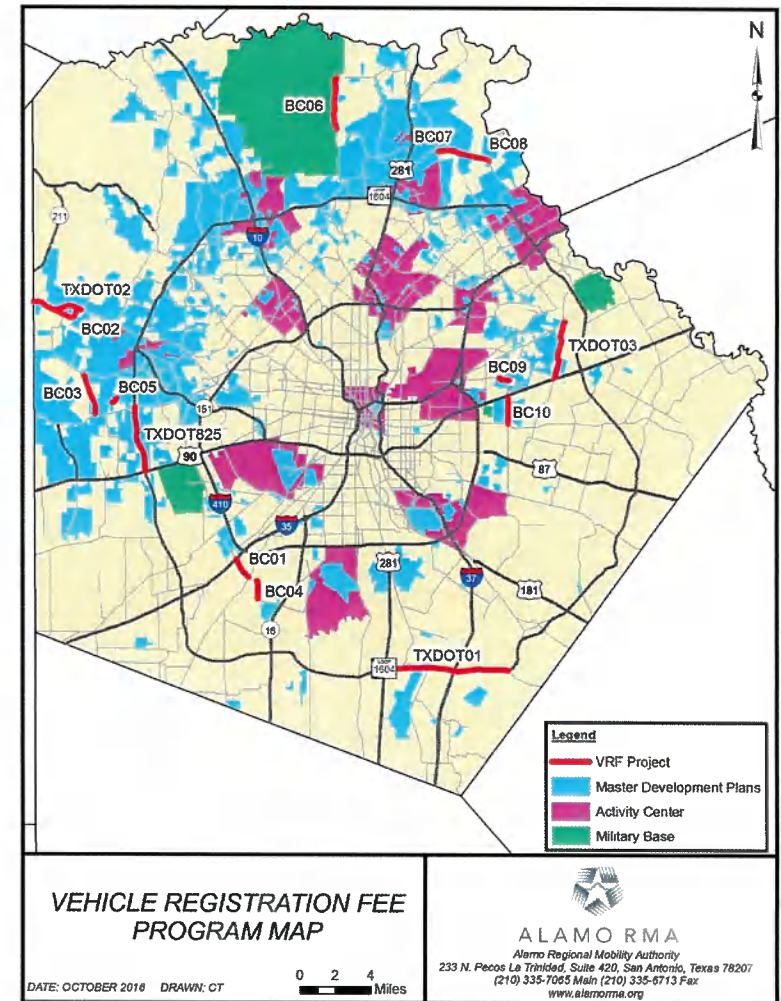
# Vehicle Registration Fee

- In 2013, the Texas Legislature authorized certain counties to impose an additional vehicle registration fee **not to exceed \$10**
- Bexar County Commissioners Court elected to adopt an additional vehicle registration fee
- Revenue from the fee is used by the Alamo RMA to fund long-term transportation projects
- Annual collection is approximately **\$16 million**
- In 2015, the Alamo RMA Board of Directors and Commissioners Court approved a list of 14 projects for funding by the Vehicle Registration Fee – including partnerships with Bexar County and TxDOT

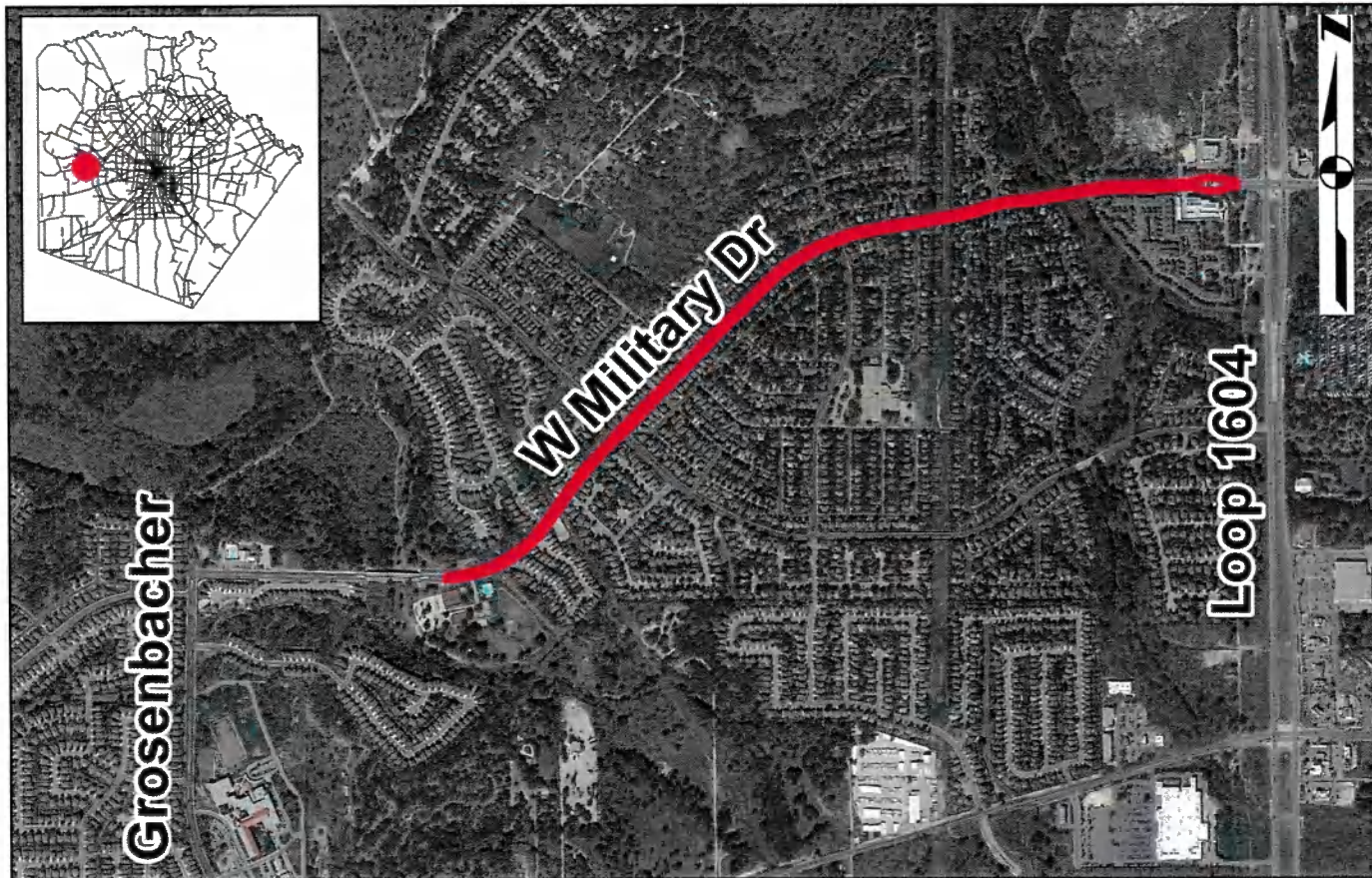


# Vehicle Registration Fee Program

Id. No.	Project Name	Limits
BC01	Fischer Road Phase II	IH 35 to Somerset Road
BC02	Old FM 471/Talley Road	Various
BC03	Talley Road Phase I	Potranco Road (FM 1957) to Wiseman
BC04	Watson Road Phase II	SW Verano to 4,900 feet south
<b>BC05</b>	<b>West Military Drive</b>	<b>Westcreek Oaks Drive to the Newly Reconstructed Bridge</b>
BC06	Blanco Road Phase II	West Oak Estates Drive to Borgfeld Drive
BC07	Evans Road Phase I	Bulverde Road to TPC Parkway
BC08	Evans Road Phase II	TPC Parkway to Hanging Oak
BC09	Candlemeadow	Binz-Engleman to Foster Road
BC10	Foster Road Phase III	IH 10 to Houston Street (FM 1346)
TXDOT01	Loop 1604 South	US 281 to FM 1303
TXDOT02	FM 471	Old FM 471 East to SH 211
TXDOT03	FM 1516	FM 78 to IH 10
TXDOT825	Loop 1604 West	Potranco Road (FM 1957) to US 90



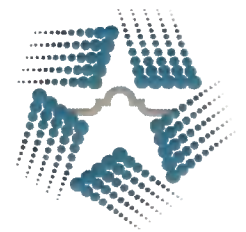
# Project Location Map



- Project Limits – Pinafore Street to Loop 1604

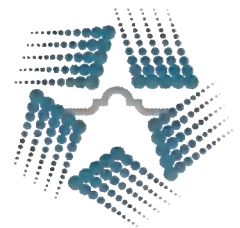
# Project Overview

- Full reconstruction of West Military Drive from Pinafore Street to Westcreek Oaks Drive
- Pavement rehabilitation from Westcreek Oaks Drive to Loop 1604
- Intersection improvements including roundabouts at Westcreek Oaks Drive, Saxonhill Drive and Kingsbridge
- Sidewalks will be reconstructed to a five-foot width
- Construction expected to begin in Spring 2020
- **Total current project cost is \$3.0 million**



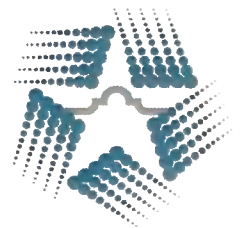
# Project History & Schedule

- Late 2015 – During the Vehicle Registration Fee planning process, West Military Drive was identified as a needed project by Bexar County Public Works due to ongoing maintenance and the need for pavement rehabilitation
- June 2016 - The Alamo RMA issued debt backed by the Vehicle Registration Fee to provide funding for the 14 projects
- October 2017 - Engineering design services contract for West Military Drive was awarded by the Alamo RMA
- January 2018 – Bexar County Public Works performed intersection studies at Saxonhill Drive and Kingsbridge which indicated the intersections would benefit from roundabout configurations. The studies were provided to the Alamo RMA because the intersections were within the West Military Drive project limits



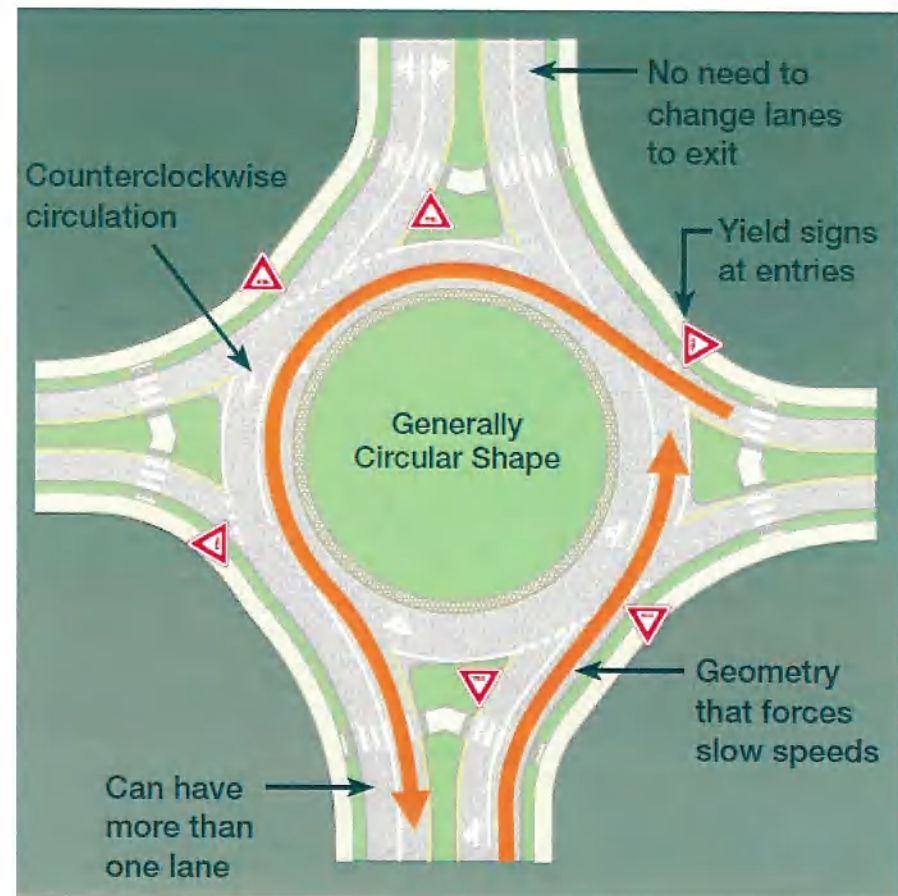
# Project History & Schedule Cont.

- August 2018 – Engineering design services for the roundabouts at Saxonhill Drive and Kingsbridge were added to the project
- December 2018 – Draft Preliminary Schematic submitted
- February 2019 – Open House will be held to inform the public of the proposed improvements and gather feedback
- Spring 2020 – Earliest construction start date

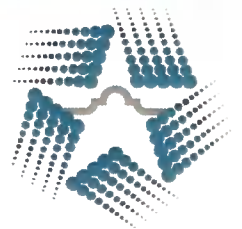


# Roundabouts

- Improve safety by eliminating head-on, right angle, and left turning traffic collisions
- Improve pedestrian safety through slower travel speeds
- Improve mobility by reducing delays associated with drivers deciding who has the right-of-way at a four-way stop

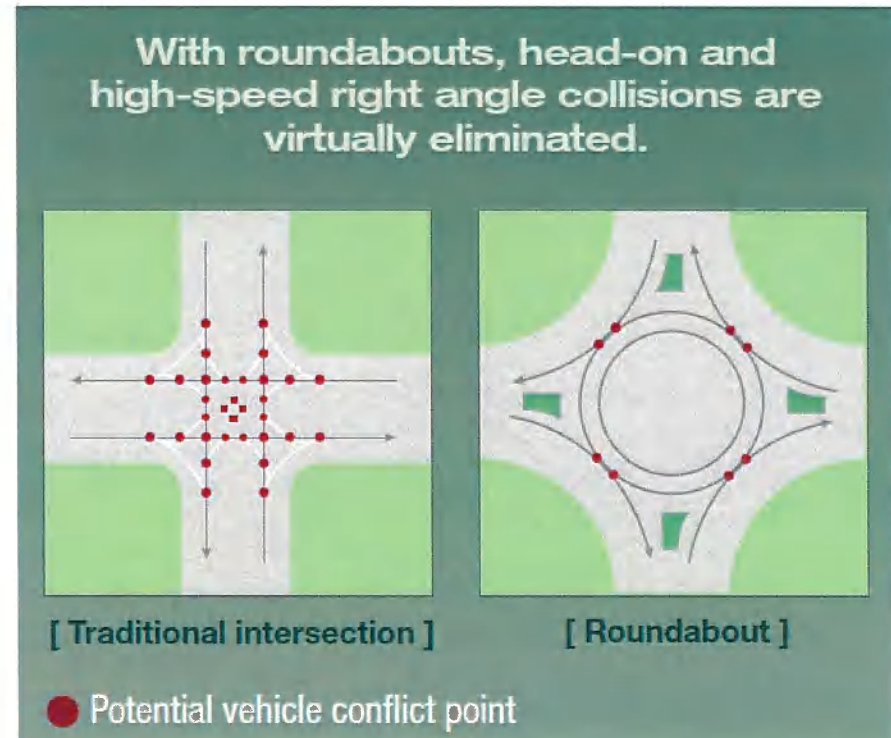


Source: FHWA

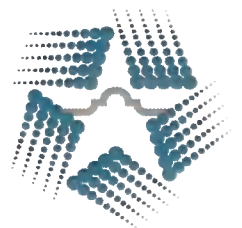


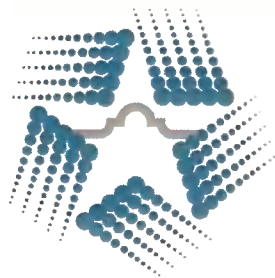
# Roundabouts Cont.

- Studies have shown that roundabouts have effectively reduced collisions where implemented.
- Overall reduction of 35% for all crashes, 76% reduction in injuries, and more than **90% reduction in fatalities** (Source: *Transportation Research Board, National Academy of Sciences*)



Source: FHWA





ALAMO RMA

*Alamo Regional Mobility Authority*

*"Moving people faster"*

## Contact Information:

Chris Trevino, PE, CCM  
Operations Engineer  
Bexar County/Alamo RMA  
(210) 335-7076  
[christopher.trevino@bexar.org](mailto:christopher.trevino@bexar.org)



# Sage Run Roundabout

- Vehicles parking along Sage Run blocking pedestrian visibility
- School bus dropping off children on Sage Run some of which are then walking through the roundabout to waiting vehicles
- Bexar County Public Works currently investigating options to improve pedestrian visibility at this location

