

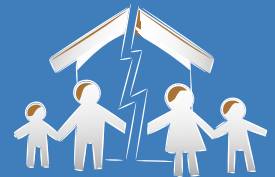
Legal Aid Service of Northeastern Minnesota



800 - 933 - 1112

Monday - Friday

9:00 a.m. - 12:00 p.m. (noon) & 1:00 p.m. - 4:00 p.m.



- | | | | | |
|------------------------|--------------------|-----------------|-------------------|---------------------|
| - "Stay at Home" Order | - Renters' Rights | - Collections | - Economic | - Domestic Violence |
| - Court scheduling | - Eviction | - Garnishment | Impact Payment | - Divorce |
| - Safety | - Termination | - Foreclosure | - Social Security | - Custody |
| - Unemployment | - Repairs | - Student loans | - Food Support | - Parenting Time |
| - Public Benefits | - Utility Shut-off | - Utilities | - Benefit Denials | - Child Support |



When you call the Hotline, we will ask you questions to determine whether you are eligible to receive our services. To obtain assistance from LASNEM, you must be eligible for services by meeting guidelines based primarily on income, assets, and household size. Please have your current information ready when you call.

*A legal advocate will contact you shortly after your application. Response time depends on the volume of calls and staff availability.



Legal Aid Service of Northeastern Minnesota (LASNEM)

www.lasnem.org

info@lasnem.org