

LA County Department of Public Health
Office of Violence Prevention

OVP: A Public Health Approach to Violence Prevention in LA County

October 19, 2023

Los Angeles Regional Reentry Partnership





Data: Impact of Violence in LA County

Trauma Informed Notice

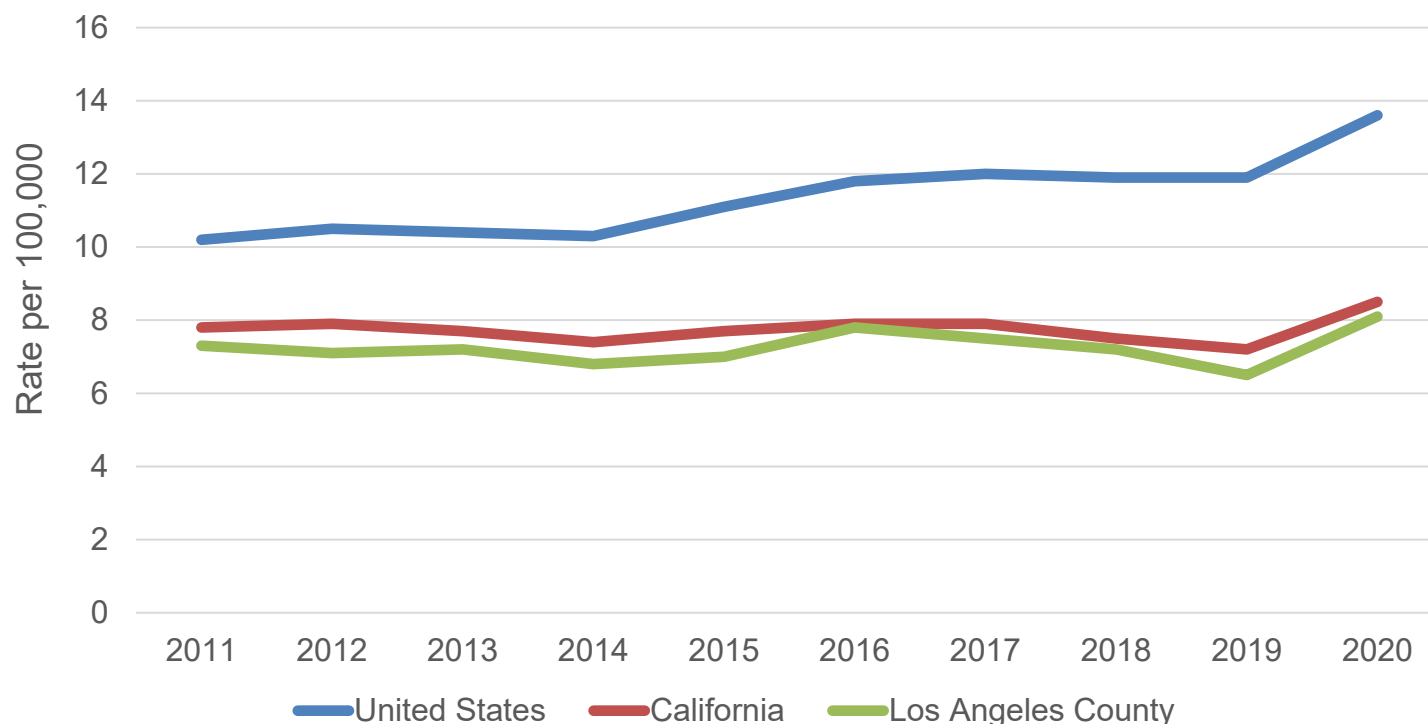
This presentation includes data about gun violence including homicides and suicides.

We acknowledge that this type of data and discussion can be traumatic for some individuals. We encourage all participants to trust their instincts while listening and take breaks as needed.





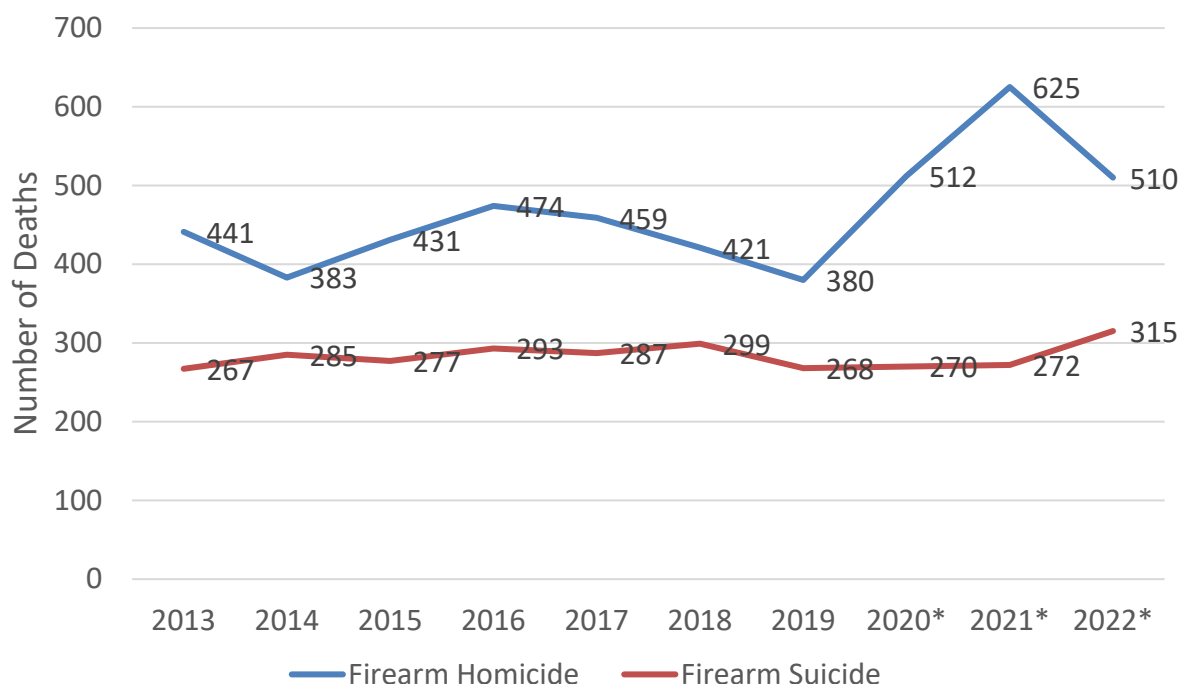
Overall Firearm Mortality Rates for the United States, California, and LA County, 2011-2020



Data from CDC, NCHS. National Vital Statistics System, Data on CDC WONDER Online Database, released in 2021. Data are from the Multiple Cause of Death Files, 1999-2020, as compiled from data provided by the 57 vital statistics jurisdictions through the Vital Statistics Cooperative Program.

Changes in Firearm Deaths Over Time

Firearm Homicides and Suicides by Year, Los Angeles County Residents



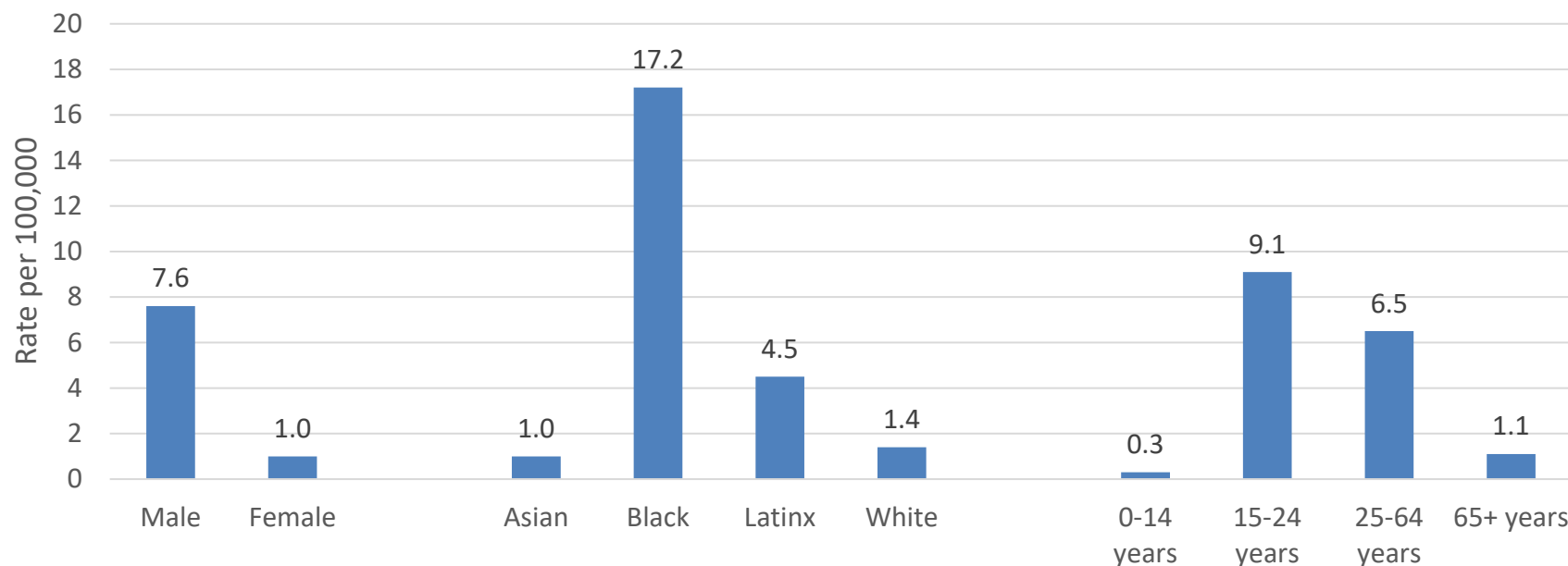
- Firearm homicides increased by 64% from 2019 (n=380) to 2021 (n=625).
- Preliminary data for 2022 show that the number of firearm homicides decreased by 18%.
- Firearm suicide numbers remained steady during 2020 and 2021, but preliminary numbers for 2022 show an increase.

* 2020 – 2022 data are provisional

Other types of firearm injuries (accidents, shootings by law enforcement, and undetermined intent) are not included in the chart.

Who is most impacted by firearm homicide?

Firearm Homicide Rates by Demographic Group, Los Angeles County Residents, 2016-2020*



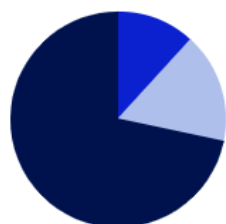
*2020 data are provisional. Rates by gender and race/ethnicity are age adjusted to the 2000 US population.

Rates could not be calculated for some smaller populations in Los Angeles County, including American Indian/Alaska Natives and Native Hawaiian and Pacific Islanders.

Costs of Firearm Deaths and Injuries, LA County 2020

Homicides/Assaults

Cost by Category



■ Out-of-Pocket Costs
■ Work Loss Costs
■ Quality-of-Life Costs

Emergency Transport	\$847,860
Medical Care	\$61,437,664
Mental Health Care	\$8,404,352
Police	\$134,865,136
Criminal Justice	\$425,721,280
Employer	\$10,748,428
Work Loss Costs	\$899,869,208
Quality-of-Life Costs	\$3,902,294,912

524 homicides and
1,336 assaults



\$ 5.4 billion

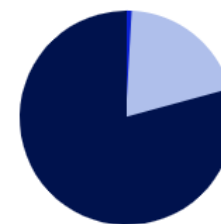
274 suicides and **20**
suicide attempts

\$ 1.8 billion



Suicides/Suicide Attempts

Cost by Category



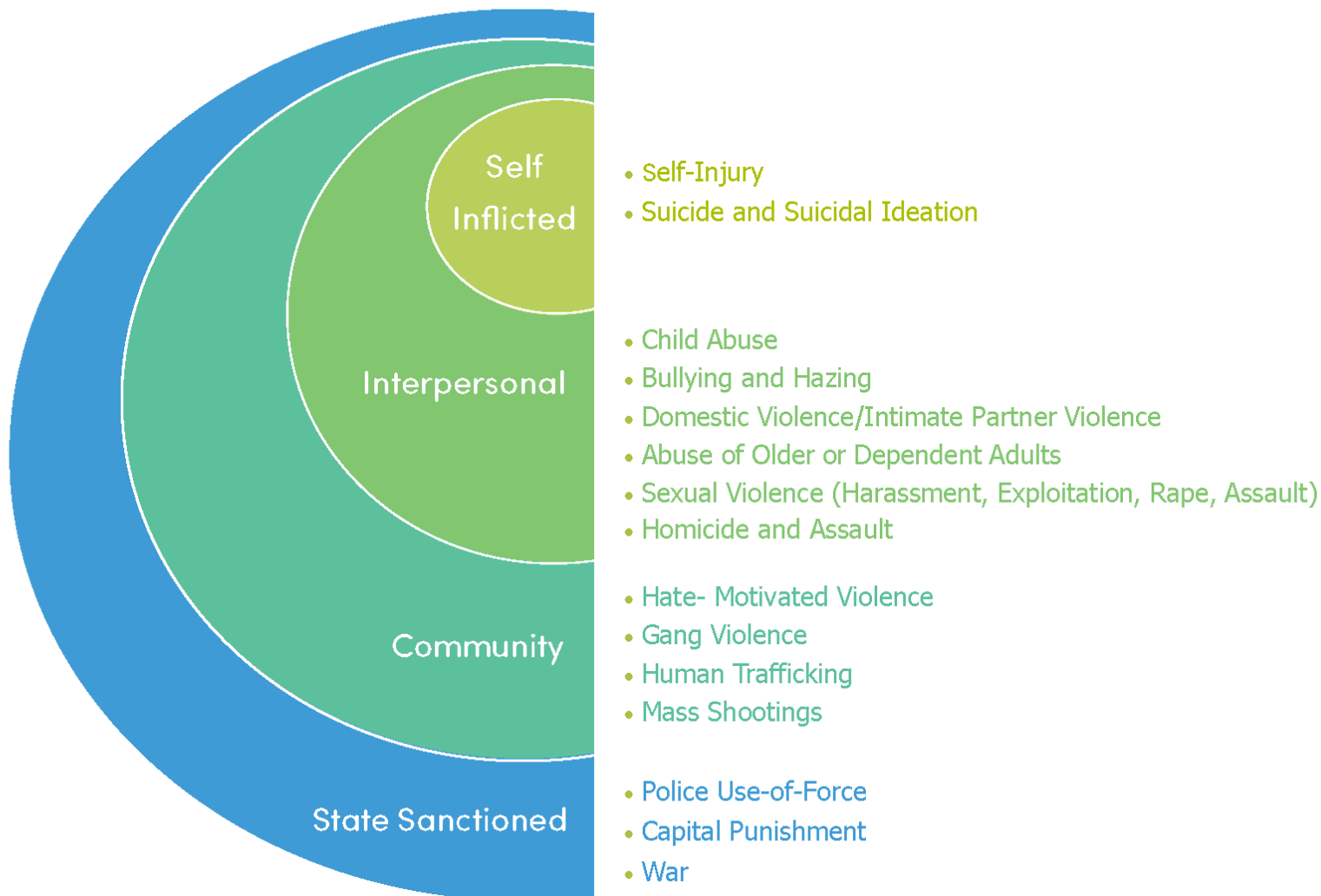
■ Out-of-Pocket Costs
■ Work Loss Costs
■ Quality-of-Life Costs

Emergency Transport	\$257,298
Medical Care	\$3,677,678
Mental Health Care	\$4,166,522
Police	\$3,930,344
Criminal Justice	\$0
Employer	\$4,308,024
Work Loss Costs	\$359,463,556
Quality-of-Life Costs	\$1,433,701,828



LA County Office of Violence Prevention Overview

Typology of Violence





Security is not possible as long as the physical, mental, and spiritual health of our communities is ignored...Safety and security require education, housing, jobs, art, music, and recreation.

– Angela Davis

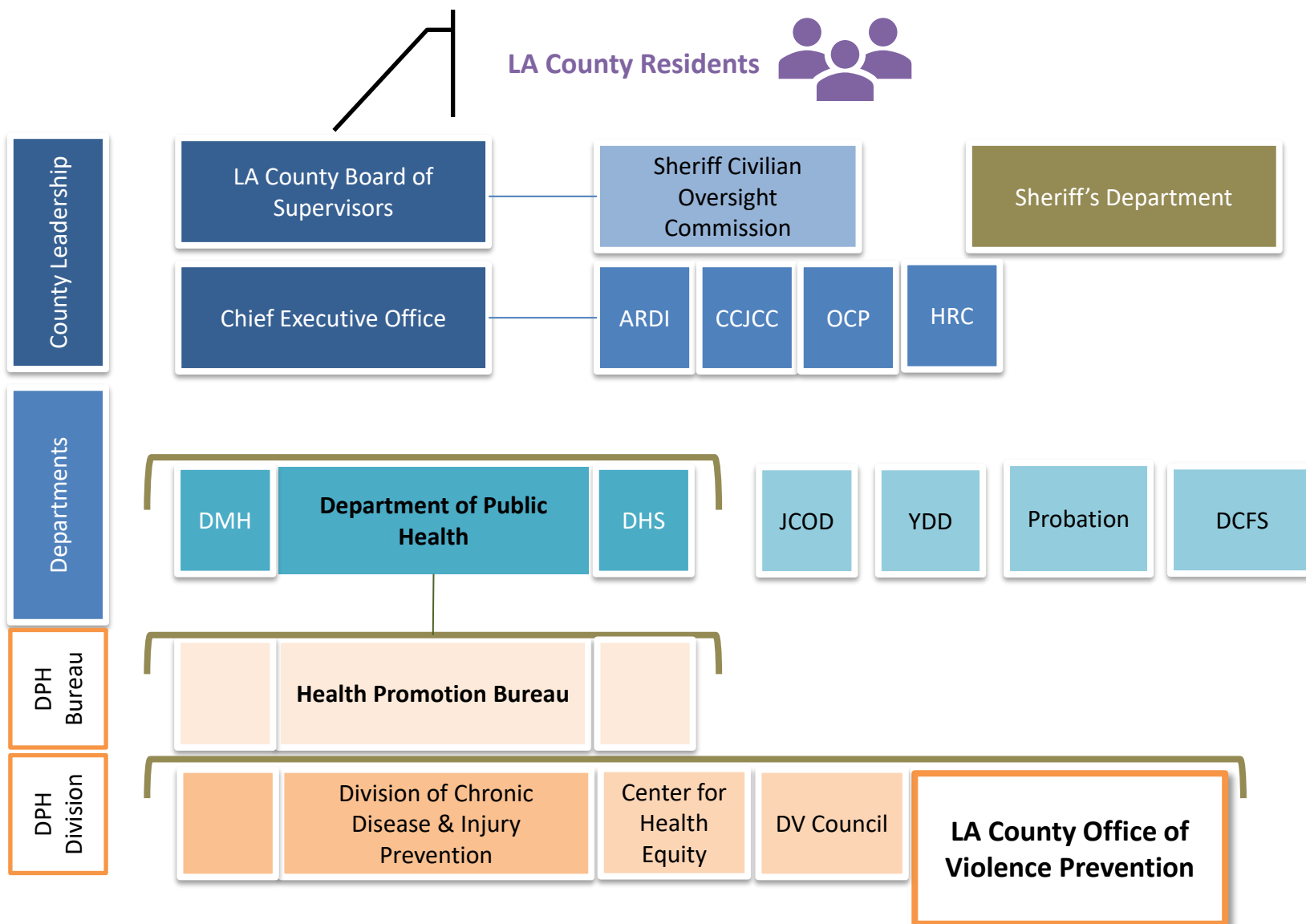


Vision for a Violence Free LA County

OVP **strengthens collaboration, capacity and partnerships** to prevent multiple forms of violence and promote healing across communities in LA County.

Established by the Board of Supervisors in **February 2019 in the Department of Public Health.**

Governance Structure: County Leadership Committee & Community Partnership Council guide the work of the office and implementation of the strategic plan.





Public Health Approach to Violence Prevention

Is **comprehensive**:
includes strategies at
multiple levels

Reduces Risk Factors
and Increases
Protective Factors

Focuses on **population**
health, not just
individuals

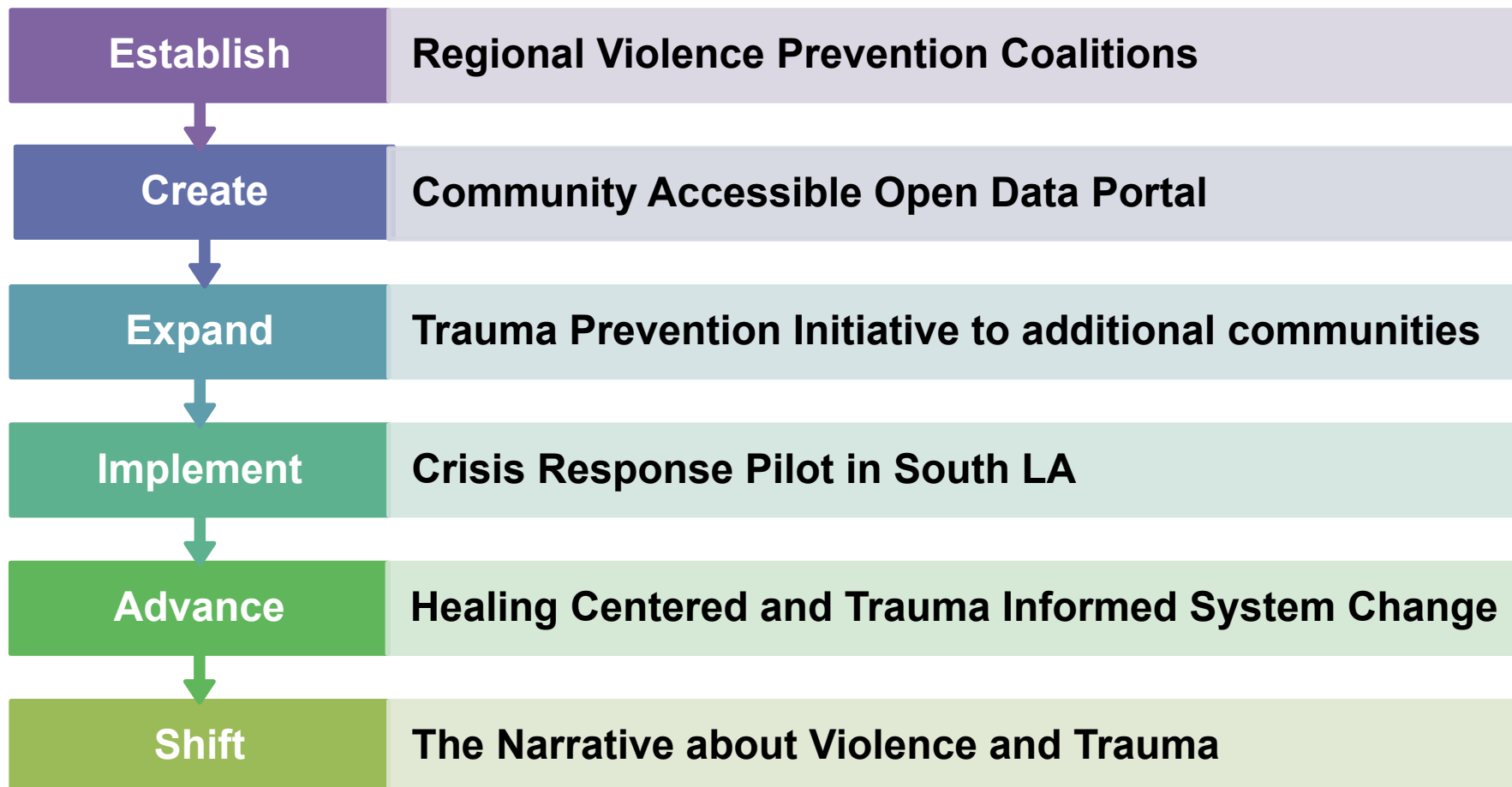
Addresses the context
[socio-ecological model]

Is Data-Driven: to
understand the
circumstances of
violence and evaluate
strategies

Facilitates Multi-Sector
Collaboration and
Coordination

Engages those most impacted, survivors or
perpetrators, in developing and implementing the
solution

OVP Early Implementation Priorities



Crisis Response Program



Crisis Response Program South LA Pilot

- Rapid, in-home and in-community connection to the individuals and families most directly affected.
- Linkages to services for ongoing/longer term social and behavioral health needs.
- Culturally and linguistically inclusive services and peer staff.

Family Assistance Program

- Healing supports and burial cost assistance to families who lost a loved one due to deputy involved shooting or death in custody



American Rescue Plan (ARP) Funding

- **\$25 Million** allocated to Public Health/OVP to fund community-based organizations to support crisis response, trauma and healing services, and community violence intervention.
 - **Street Outreach, Hospital Violence Intervention**
 - **Peer-to-Peer Credible Messenger Training Academy**
 - **Youth Healing, Mentorship and Leadership Programs**
 - **Crisis Response and Community Healing Programs**
 - **Hardship Fund**
- **Timeline:** July 2023 – December 2024

Shifting the Narrative: The Storytelling Project

The project used art-based trauma-informed techniques to record the narratives of LA County residents from diverse backgrounds who have experienced violence at the individual or systemic level.



- **A collaboration between the LA County Department of Arts and Culture, an Artist in Residence and OVP.**
- **100 stories collected**
- **50+ photographs**
- **Book:**
<http://ph.lacounty.gov/ovp/Storytelling.htm>



Gun Violence Prevention Platform (GVPP)

1. Advocate for **robust gun safety legislation** locally and nationally, including the federal ban on assault weapons and large capacity magazines.
2. **Promote social connections, healing, and a culture of peace** through safe spaces and programs that address harm, trauma, and the impact of violence. Support opportunities that foster community togetherness, inclusion, and a sense of belonging while embracing diversity.
3. In partnership with the courts, community and faith-based organizations, and law enforcement, **improve awareness and access to Gun Violence Restraining Orders (GVROs.)** Ensure services, systems and messaging are accessible, culturally relevant and cause no harm.
4. **Increase access to comprehensive, culturally relevant physical and mental health supports and services for all students, K-12.** Enhance school safety by implementing pilot initiatives in at least 3 school districts.

New OVP Initiatives

- Youth Suicide Prevention Reporting and Crisis Response Pilot (CDPH Grant)
 - Technical assistance to strengthen reporting and crisis response
 - Local advisory body
 - Funding for CBOs and county partners
- Sexual Assault Council*
 - Convene council to lead a coordinated response
 - Funding for prevention programs and communications
- Domestic Violence Prevention*
 - Teen Healthy Relationships Curriculum for high schools
 - CBO contracts for perpetrator healing programs
 - Mini grants for community prevention

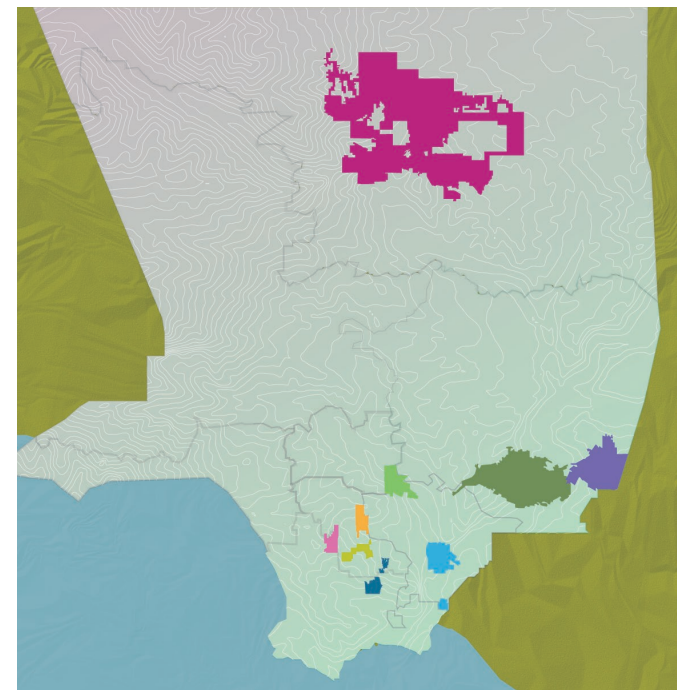


Trauma Prevention Initiative: Community Driven Public Safety

Trauma Prevention Initiative (TPI) Overview

A community-based approach to public safety that is comprehensive, place-based, invests in peer intervention strategies and community leadership, and adapted to the unique needs of communities

- 2016: Implemented in 4 South LA communities
- 2022: Expanded to 9 communities



TPI Funded Strategies

Community Empowerment & Systems Change

Intervention

1. Hospital Violence Intervention Program
2. Street Outreach and Intervention Services

Capacity Building

3. Capacity-Building Training and Technical Assistance
4. Peer to Peer Violence Prevention Learning Academy

Prevention

5. Community Engagement
6. Community-Identified Prevention Strategies

Hospital Violence Intervention Program

CBOs partner with trauma hospitals to engage victims of violence



- 24/7 response bedside in the hospital
- Case management services post hospital discharge
- Referrals to needed services: victim benefits, counseling, employment, housing, substance use treatment, others

2017: 1 hospital

2022: 4 hospitals

From Jul 2017 – Jun 2023

1499

Victims of violence received
HVIP services at 4 hospitals

Street Outreach & Community Violence Intervention

CBOs employ credible messengers with lived experience to de-escalate community tensions and promote peace

- Respond to violent incidents to reduce retaliatory violence and promote peace
- Peace maintenance and rumor control
- Safe passages to parks and schools
- Case management for violence impacted community members including peer mentoring and service referrals
- Community peace activation events



2018: 4 communities

2022: 9 communities

From Jul 2019 – Jun 2023

740

violent incident responded to

PREVENTION: Community Engagement

Westmont West Athens & Willowbrook Community Action for Peace (CAP) Coalitions

- 2014 – 2016
 - Established relationships
 - WWA Landscape analysis
- 2017 – 2018
 - First and Second WWA Unity Summit
 - WBK Landscape Analysis
 - First Willowbrook Community Summit
 - Parks are Safe Zone campaign
 - Strategic Plan drafted
 - Established WWA Community Steering Committee
- 2019 – 2021
 - Third WWA Unity and Second WBK summit
 - Mini grants for training and peace building
 - Established WBK Community Steering Committee
 - Leadership building and community mini-grants
 - COVID-19 and community public safety outreach



2014: 1 community

2018: 2 communities

2022: 9 communities



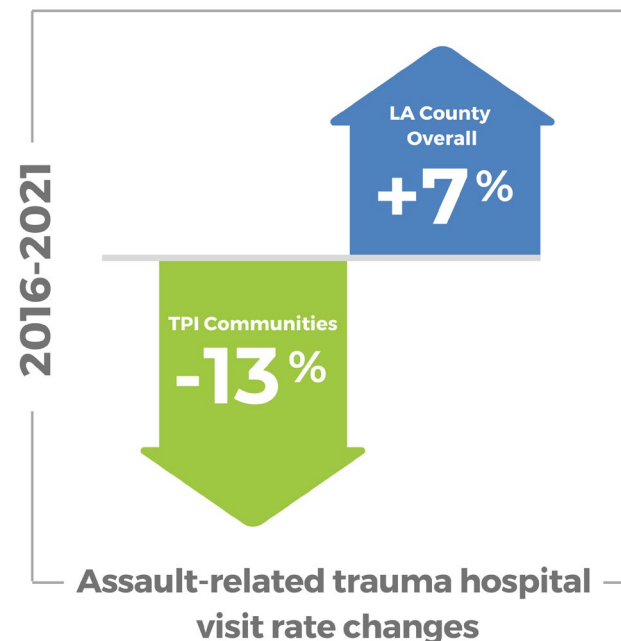
CAPACITY BUILDING: Training and Technical Assistance Team (TTA)

- **Probation funding \$1.5M for FY23-24**
 - Cohort-based, up to 14 agencies in TPI current and expansion communities
 - 1:1 TTA, Operations and organizational development
 - Peer learning meetings
 - Mini grants (\$50k)
- **Participating in Countywide Capacity Building Workgroup** to coordinate and advance systems change

Trauma Prevention Initiative Impacts

Between 2016 (the year before Street Intervention & Outreach implementation) and 2022, violent crimes in 1 of 4 communities declined.

- Westmont West Athens, which has had ongoing community engagement infrastructure, saw significant declines
- Compton and Willowbrook remained the same
- Florence Firestone saw a sharp increase

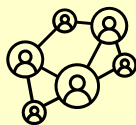


Collaboration Across Systems

- **Incident notification protocol with Sheriff's and other law enforcement agencies**
- **Safe passages protocol** with Parks and Rec
- **Regional Intervention Council Meetings** with law enforcement, Community Intervention Workers, and Parks to solve safety concerns
- **Community Action for Peace networks** to promote positive community identity and build collaboration
- **Hospital Partnerships** to provide peer case management to victims of violence
- **Advisory Committee** to connect county partners to align work to support communities



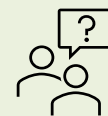
Public Safety System - Referral Connection Points



**Social Connections,
Identity, Purpose**



**Safe and welcoming places:
Park and Schools**



**Health and Social
Services / Safety net**



**Community Action for
Peace Networks –
community leadership,
collaboration, action
plans and referrals**



**Street Outreach &
Community Violence
Intervention – incident
response, safe passages,
case management**



**Hospital Violence
Intervention: peer
case management for
victims of violence**



**Community Crisis
Response – Healing
Services for Individuals
and Communities**



**Law Enforcement Response
/ Emergency Management**



**Criminal Justice
Diversion / Victim
Services**



**Crisis response: mental
health, substance use,
houselessness**



Building infrastructure to support the work

- **Regional approach** across cities and unincorporated communities and “public safety” agencies
- **Connecting and aligning county strategies** in hardest hit communities to support community-driven solutions
- Support systems to address **vicarious trauma** for all responders
- **Capacity building** for grassroots organizations and **equitable contracting**
- Training to support **culture shift within systems** for survivor and healing centered work
- **Career pathways**, diverse workforce, and professionalization

Contact Information

Andrea Welsing, Director
(626) 293.2998 (office)
awelsing@ph.lacounty.gov

Kelly Fischer, Deputy Director
(323) 236-6858 (cell)
kfischer@ph.lacounty.gov

WEBSITE: <http://www.publichealth.lacounty.gov/ovp/>