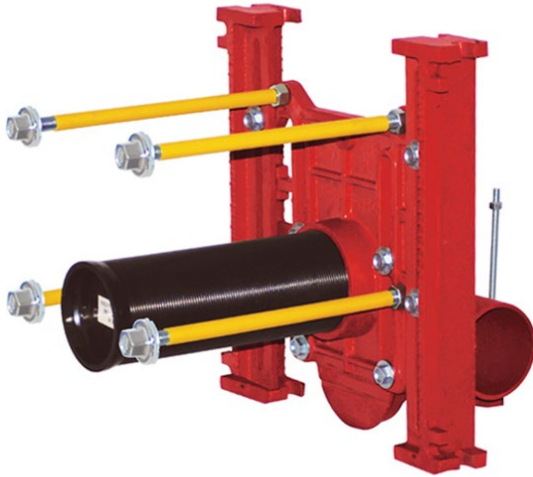


Fixture Carriers



VS



MC-10 SERIES

- ✓ Hardware ships in two packs, one for rough in and one for the finish trim, making installation easy.
- ✓ Rod protectors with back up nut arrive preassembled ready to go.
- ✓ Nipple does not need to be removed to cut which allows for easy adjustments if needed.
- ✓ 1/2" tapping allows for unistrut to place flush against the top and bottom flat sections of the leg for the flush valve rough in
- ✓ Left and right carrier fittings are cast with **LEFT** or **RIGHT** into them for easy identification on site.
- ✓ Carrier fittings are individually boxed with the rear anchor support kit.

Z1200 SERIES

- ✗ Hardware comes in one bag, easy to lose finish trim at the end of the job when it is needed.
- ✗ Rod protectors are sent loose and require extra labor for assembly.
- ✗ Nipple flares out at end and adjustments can only be made from the back.
- ✗ Does not have
- ✗ Does not have
- ✗ Does not have