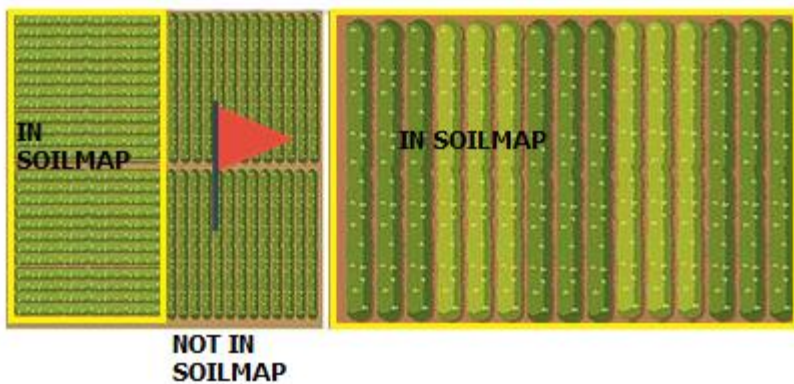




GMO/Crop Neighbors



Version 8.3.30

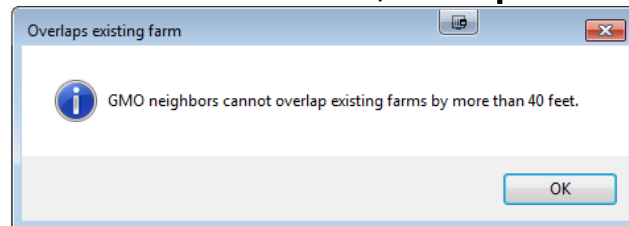
What is GMO/Crop Neighbors?

- ▶ This is a layer that exists separate from fields that are currently in SOILMAP. This will allow you to set the GMO/Crop for fields that do not have their boundary in SOILMAP. There will be no DM – Farm – Field hierarchy.
- ▶ If you add a new farm and it overlaps a GMO/Crop Neighbor by 40 feet or more, the GMO/Crop Neighbor will auto remove.

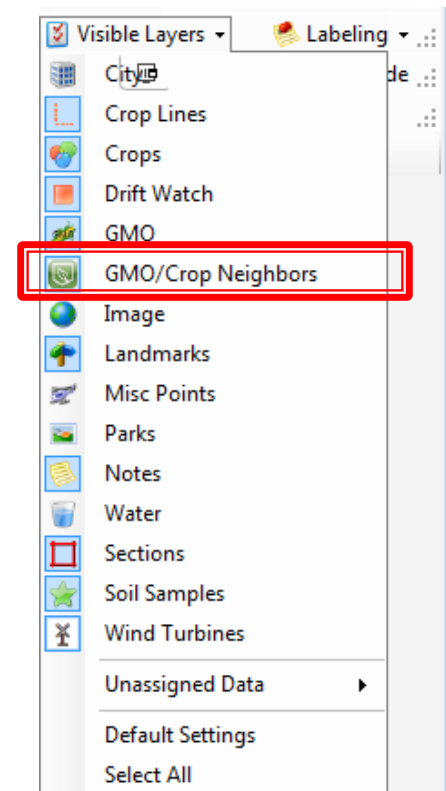


Other rules

- ▶ You will get a warning if the shape you add overlaps a farm by 40 feet or more.
- ▶ The colors and the traits setup for “GMO” are also used by this new “GMO/Crop Neighbor” feature.

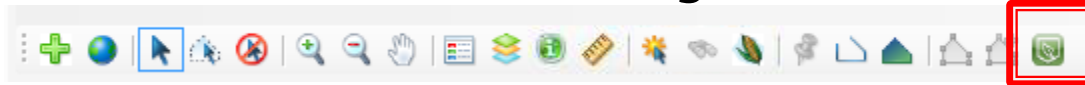


- ▶ Can be turned on/off from visible layers

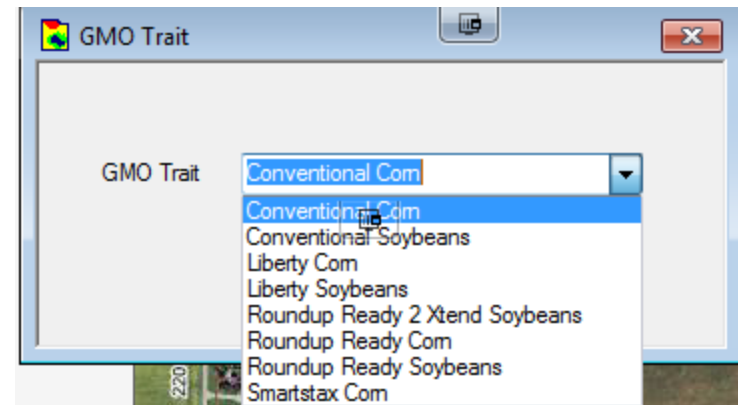


How to Add

- ▶ 1. Click the new icon in the far right of the toolbar.



- ▶ 2. You can now draw in your field boundary, double click to finish.
- ▶ 3. Select the GMO/Crop trait.
- ▶ 4. You are now set and should see your GMO/Crop Neighbor on the map

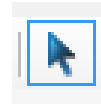


How to Delete

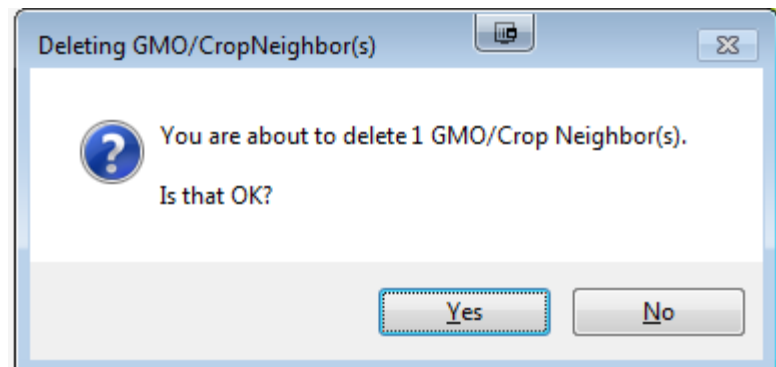
- ▶ 1. Once you are zoomed in on an area, click the GMO/Crop Neighbor button.



- ▶ 2. Now select the “select” arrow button.



- ▶ 3. Select the GMO/Crop Neighbor area.
- ▶ 4. Push the delete key from your keyboard.

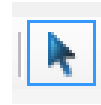


How to Edit

- ▶ 1. Once you are zoomed in on an area, click the GMO/Crop Neighbor button.



- ▶ 2. Now select the “select” arrow button.

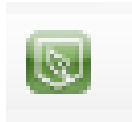


- ▶ 3. Select the GMO/Crop Neighbor area.

- ▶ 4. Select the “reshape button” this will allow you into edit mode.



- ▶ 5. When you are done uncheck the GMO/Crop Neighbor button.



Questions

- ▶ Please contact help@soilmap.com for any questions or a walkthrough.
- ▶ 1-515-955-9004