

July 2025

Alpena County George N. Fletcher Public Library

Between the Stacks



211 N. First Avenue, Alpena, MI 49707
989.356.6188 www.alpenalibrary.org

Closed

The Library will
be closed July
4th in observance
of the holiday.

The logo for Makerlab Camp 2025 features a stylized orange gear with a blue 'm' inside, and a blue fish swimming to the right. The text "makerlab" is in orange and "Camp 2025" is in blue.

**makerlab
Camp 2025**
JULY 16-17 | 10 am -12pm
AGES 12-18
SPACE IS LIMITED

LINOLEUM
Print Making

REGISTRATION REQUIRED
CALL 989.356-6188 EXT 20 TO REGISTER

DISCOVER CONNECT COLLABORATE
ALPENA COUNTY GEORGE N. FLETCHER PUBLIC LIBRARY



New Library Director

The Alpena County George N. Fletcher Public Library Board of Trustees unanimously appointed Christina Markowski to permanently fill the role of Library Director following a series of candidate interviews. Markowski had been serving as Interim Director since September 2024 and has been on staff with the Library since 2015. Through the course of her career at the Library, she has worked in youth services, STEM programming, circulation services and more. Markowski earned her Master's Degree in Library and Information Science from Wayne State University. Markowski is an Alpena County native and is excited to be taking on this new role. "I am thrilled to enter the Director role at Alpena County George N. Fletcher Public Library. I love my hometown library and look forward to being a part of the library's future."

Markowski officially began her role on June 7, 2025.

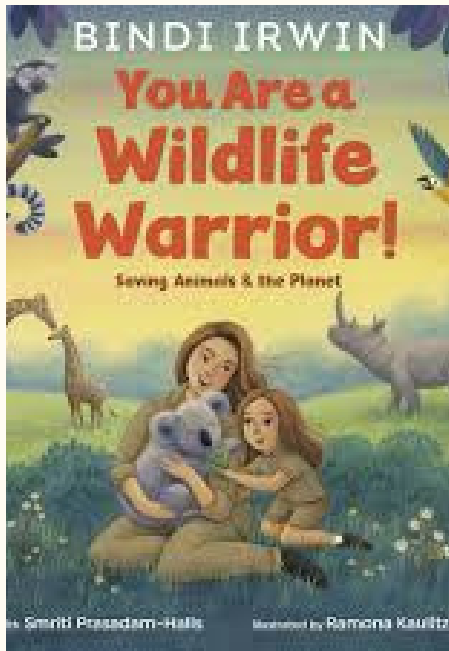


CONGRATULATIONS



The Alpena County Library extends a gracious thank you to Matt, our facilities manager, for his outstanding craftsmanship in creating the planters he made. They can be found along the breakroom windows. Another large thank you is extended to the Garden Club for the hard work they put into keeping our outside gardens and planters in top shape and stocked with flowers throughout the summer. We greatly appreciate everything you do!

Wild for Wildlife Book Recs!

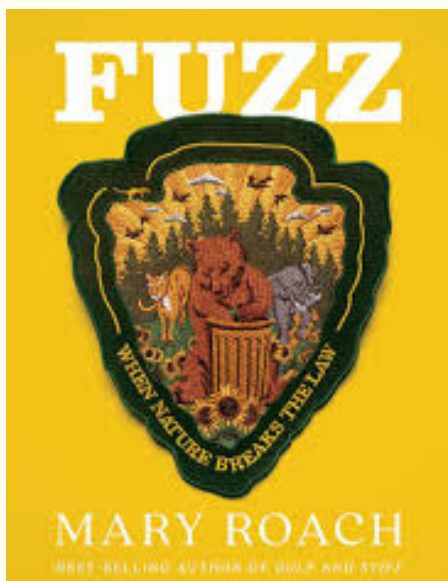
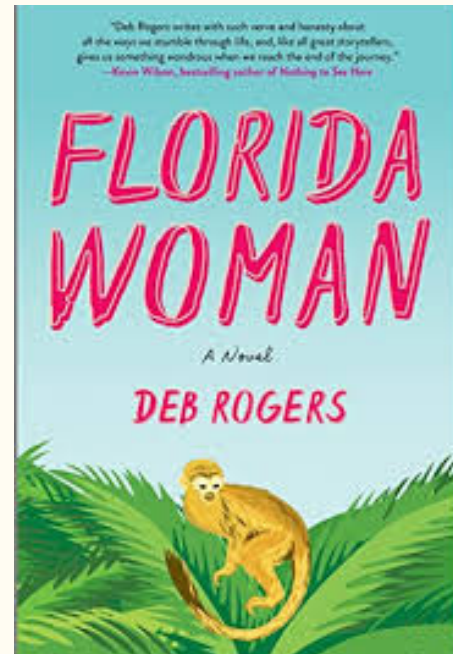


J Fic:

From the daughter of Steve Irwin, The Crocodile Hunter, comes an illustrated picture book urging readers to walk on the wild side and uncover their inner conservationists.

Adult Fiction:

When the chance comes for Jamie to escape viral infamy and imminent jail time by taking on community service at Atlas, a shelter for rescued monkeys, it seems like just the fresh start Jamie needs to finally get her life back on track — until it's not..



Nonfiction:

Combining little-known forensic science and conservation genetics with a motley cast of laser scarecrows, langur impersonators, and trespassing squirrels, Roach reveals as much about humanity as about nature's lawbreakers.

July 2025

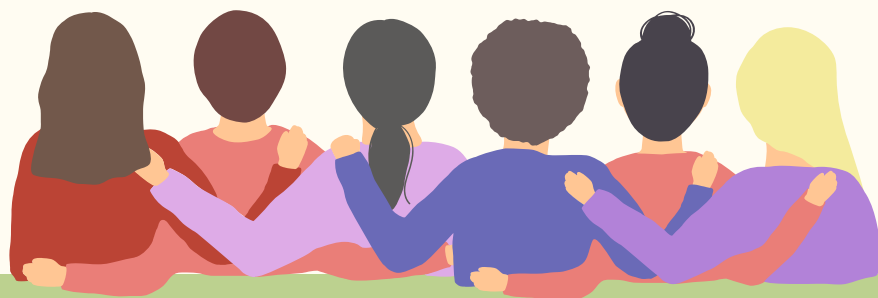
Friends of the Library

The Friends of the Library are now accepting donations for their annual Book Sale! They are not accepting encyclopedias, medical texts, atlases, genealogies/family histories, textbooks of any kind, Bibles, magazines, yearbooks, or cassette tapes. Have books to donate? Donations of 4 or more boxes need to be scheduled for drop-off. We are not able to pick up donations

Items need to be in good condition, nothing with ripped pages or covers, mold or mildew, stains, or odors. Items not in good condition will be discarded.

If anyone is looking for volunteer opportunities-contact friends@alpenalibrary.org

Membership updates: Friends of the Library memberships will run from August to July, starting this year. Members who have already paid their 2025 dues will be set through July 2026.



July 2025

July Programs



ALPENA COUNTY
GEORGE N. FLETCHER
PUBLIC LIBRARY

MOVIE NIGHT

Four misfits are suddenly pulled through a mysterious portal into a bizarre cubic wonderland that thrives on imagination. To get back home they'll have to master this world while embarking on a quest with an unexpected expert crafter. (2025, PG, IMDB Summary) Not an APS sponsored event.


FRIDAY, JULY 11
4:30 - 7 PM

Movie Ticket
Popcorn

Tween/Teen EDIBLE SCULPTURE CHALLENGE

Friday, July 18th
Time: 5-6
Age: 8-18

For ages 8-18. Youth will build the edible sculptures within the challenge guidelines. A tween winner and teen winner will receive a prize! Sculptures can be eaten afterward. Registration recommended at <https://bit.ly/406tkJg>.



211 N 1st Ave, Alpena, MI 49707
Not an APS sponsored event.



Summer Mosaics

JULY 30TH | 5-6:30 PM



PARTICIPANTS 18+ CAN JOIN US FOR A NIGHT OF MOSAIC MAKING. SELECT A WOODEN BASE AND FILL IN WITH COLOR PIECES OR A PATTERN YOU DESIRE! EVERYONE GETS TO TAKE THEIR MOSAIC COASTER HOME. PREREISTRATION REQUIRED.
LINK: [HTTPS://BIT.LY/3SZQ0R0](https://bit.ly/3SZQ0R0)
211 N 1st Ave, Alpena, MI 49707



YOUTH RUBE GOLDBERG MACHINE CHALLENGE

July 12, 1-2 PM
Ages: 5-12



Learn about Rube Goldberg and create a machine to perform a simple task with everyday items. Work together in teams or on your own. Not an APS sponsored event.

211 N 1st Ave, Alpena, MI 49707



Comics Artist

for Deadpool, Wolverine, Thor & other world-famous superheroes,

Presents his own signature Live-Drawing Performance at Alpena County George N. Fletcher Public Library, this July 19th 2025, from 1:00 pm - 2:30 pm!

The Artist shows how a comic book is made from beginning to end, and the demo-drawings are then given away...**FOR FREE!**


See more at SUPERHEROWORKSHOP.ORG
NOT AN APS SPONSORED EVENT.



Adult Puzzle Competition

ALPENA COUNTY
George N. Fletcher
PUBLIC LIBRARY

July 26th, 11 AM - 1:45 PM



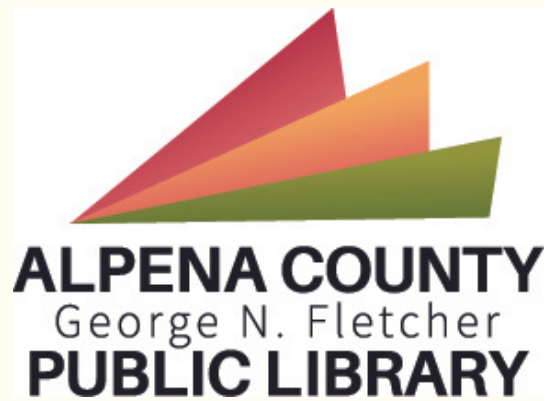
Get together with friends, and the first three teams to put together the puzzle win a prize. Group limit of 2-4 people. No pre-registration, but limited spots for event.

211 N 1st Ave, Alpena, MI 49707

Visit the library events calendar for all of our upcoming programs!

JULY 2025

| SUN | MON | TUE | WED | THU | FRI | SAT |
|-----|--|---|--|---|---|---|
| 29 | 30 | 1 | 2 | 3 | 4 | 5 |
| | | Tinker Tuesday 4 - 5:30 PM | Open MakerLab 10 - 12 PM | Weekly Storytime 9:15 - 10 AM Reading Buddies 5 - 5:45 PM | Library Closed | |
| 6 | 7 | 8 | 9 | 10 | 11 | 12 |
| | Pokemon Club 5 - 6 PM | Early Connections 10 - 11 AM TAB Meeting 4 - 5 PM Tinker Tuesday 4 - 5:30 PM | Open MakerLab 10 - 12 PM | Weekly Storytime 9:15 - 10 AM Reading Buddies 5 - 5:45 PM | Family Movie Night 4:30 - 7 PM Beyond Differences 2 - 4 PM | Youth Rube Goldberg Machine 1 - 2 PM |
| 13 | 14 | 15 | 16 | 17 | 18 | 19 |
| | Puppeteer 10 - 11 AM Lego Club 5 - 6 PM | Tinker Tuesday 4 - 5:30 PM | Open MakerLab 10 - 12 PM Maker Camp 10 AM - 12 PM | Weekly Storytime 9:15 - 10 AM Reading Buddies 5 - 5:45 PM Maker Camp 10 AM - 12 PM | Teen/Tween Edible Sculptures 5 - 6 PM | Comic Illustrator 11 AM - 3:30 PM |
| 20 | 21 | 22 | 23 | 24 | 25 | 26 |
| | Giant Board Game Night 4:30 - 6 PM | Early Connections 10 - 11 AM Tinker Tuesday 4 - 5:30 PM | Open MakerLab 10 - 12 PM | Weekly Storytime 9:15 - 10 AM Reading Buddies 5 - 5:45 PM | Foam Time Party 10 - 11 AM DnD Shorts 3:30 - 6 PM | Puzzle Competition 11 AM - 1:45 PM |
| 27 | 28 | 29 | 30 | 31 | 1 | 2 |
| | Pokemon Training Camp 5-6:30 PM | Tinker Tuesday 4 - 5:30 PM | Open MakerLab 10 - 12 PM Summer Mosaics 5-6:30 PM Pokemon Training Camp 5-6:30 PM | Weekly Storytime 9:15 - 10 AM Reading Buddies 5 - 5:45 PM | | |



Located in downtown Alpena, the Alpena County George N. Fletcher Public Library was established in 1967 as a county library. Dedicated to serving as a regional gathering place for learning and quality cultural experiences, the Library also acts as a primary resource for historical research, enrichment opportunities, and educational support. The Library is committed to building a reading community while providing quality arts, culture, STEM, and humanities programming unique to this area of the state.

**Monday 9-7pm,
Tuesday 9-7pm
Wednesday 9-7pm,
Thursday 9-7pm
Friday 9-7pm,
Saturday 9-4pm
Sunday CLOSED,
Holidays CLOSED**