



Dear Community Partners,

Nearly six months into the COVID-19 pandemic and our community is still struggling. With the help of local funders and community collaboration, we're getting a handle on how to move forward.

Ten funders, across Palm Beach County, continue to support nonprofits and the families they serve through the COVID-19 Relief and Recovery application. So far, more than 160 agencies have received a total of \$6.2 million in funds for food, basic needs, mental health counseling, direct services, personal protective equipment and more.

Local leaders also are working together, with the School District of Palm Beach County, to ensure all children have access to a laptop and internet so they can fully participate in virtual learning this fall. Some organizations have supplied the hardware while others have agreed to cover the cost of Wi-Fi hotspots and internet access.

Leaders have brainstormed ways to provide tutoring, educational supports and child care to children whose parents need to work outside the home. They have continued to fund child care scholarships, and local nonprofits have worked to keep their doors open so parents have safe, affordable places for their children to stay while they attend virtual school.

Meanwhile, a team of Birth to 22 leaders continue to meet to determine what our community will need post COVID-19 – particularly communities of color, which have been disproportionately impacted by the health and economic crises exacerbated by the virus.

No doubt there is much work ahead in the coming months. But by pooling our resources and thinking creatively, we as a community will come through these tough times stronger than ever.

Sincerely,

Dr. Lisa Williams-Taylor
CEO, Children's Services Council

Tammy K. Fields
Director, Palm Beach County Youth Services Department



Birth to 22 United for Brighter Futures NEWSLETTER

Volume 1 | Issue 4 | September 2020

Pacesetter Recognition

Palm Beach County's Birth to 22: United for Brighter Futures Alliance was recognized as a "Pacesetter" by the National Grade-Level Reading Campaign.

COVID-19 Response

Birth to 22's Steering Committee operationalized a COVID-19 Ad Hoc Gaps Committee to address pandemic response planning and recovery efforts.

Alliance Spotlights

Since its inception, Birth to 22 and its community alliances, have been working towards providing youth and young adults resources to reach their fullest potential.

Share Feedback & Stories!

Do you have feedback or have an inspiring story to share? We'd love to hear from you!

Contact us at, psc-birthto22@pscgov.org

Advancing Racial Equity Workshop

On July 29, the Birth to 22 Racial Equity Core Team hosted its fourth Advancing the Mission workshop, virtually via Zoom. The session drew more than 150 participants, representing over 35 agencies, breakout session participants averaged approximately 30 attendees. The session began with a reflection on how systemic racism has impacted current issues involving police brutality and the COVID-19 pandemic. Following that discussion, the Racial Equity Core Team facilitated the following workshops:

- Building the Field: Reflections on Racial Equity Institute Training
- Vision for Equity: Developing a Racial Equity Statement
- The Engine of Institutional Change: Developing Racial Equity Core Teams within Your Organization
- Measuring Racial Equity: Using Racial Equity Organizational Assessments to Build Action Plans
- Getting to Results: Developing a Racial Equity Action Plan for Your Organization

To date, more than 300 individuals representing dozens of organizations have participated in these workshops where they learned how to use racial equity tools to identify clear goals and measurable outcomes that will reduce racial inequities and improve success for all groups. These ongoing

workshops are designed to enhance leaders' ability to utilize racial equity tools and assessments, identify policies and institutional practices that lead to reducing racial inequities and develop racial equity action plans within their respective organizations. Palm Beach County has had 14 organizations commit to joining its local Advancing the Mission network, with another three-four agencies in the pipeline. The goal is to have 20 organizations join the effort by the end of 2020.

The Birth to 22 Alliance's Racial Equity Core Team will continue its Advancing the Mission workshops throughout the coming year and will work collectively with other community partners engaged in movement for racial justice in Palm Beach County to advance racial equity.



Birth to 22 Captures National Honor



The growth of Palm Beach County's Birth to 22: United for Brighter Futures Alliance was recognized as a 'Pacesetter' in July by the national Grade-Level Reading Campaign.

The award was in the category of "big-tent collaboration," a salute to the alliance's expansion to more than 300 community partners working together to support the healthy growth, development and education of children, prenatally through young adulthood, so they graduate from high school and succeed in life.

More than 100 communities across the United States submitted essays in the competition this year, and 21 were selected as Pacesetters.

Launched in 2010, the Campaign for Grade-Level Reading is a collaborative effort of funders, nonprofit partners,

business leaders, government agencies, states and communities across the nation to ensure that many more children from low-income families succeed in school and graduate prepared for college, a career and active citizenship.

The winning essay, prepared by the Children's Services Council of Palm Beach County, traced the growth of the Birth to 22 Alliance from its inception at the 2013 Youth Summit, through the Community Conversations, creation of the Youth Master Plan and development of Future Leaders United for Change. Children's Services Council and Palm Beach County Youth Services Department co-lead the Birth to 22 Alliance.

The 'Pacesetter' honor follows the coveted 2018 Achievement Award earned by the Birth to 22 Alliance from the National Association of Counties (NACo).

Community Indicators

Birth to 22 Palm Beach County United for Brighter Futures

Palm Beach County Indicators of Child, Family and
Community Risk, Well-being and Access to Supports



June 2020

Children's Services Council of Palm Beach County, the School District of Palm Beach County, Department of Children and Families, Early Learning Coalition of Palm Beach County, and the Department of Juvenile Justice.

The data team recently completed the 2019 Palm Beach County Indicators of Child, Family, and Community Risk, Well-being and Access to Supports. This presentation style data deck provides information on a comprehensive array of indicators for Palm Beach County children and families beginning prenatally and continuing through the transition to adulthood.

The Child Youth and Community Data Team of the Birth to 22: United for Brighter Futures in Palm Beach County is comprised of representatives from

Trends over time vary by construct with positive gains in some areas (e.g., 4th and 5th grade reading proficiency, juvenile justice involvement, high school graduation rates) and losses in others (e.g., prevalence of homeless students, access to early prenatal care, kindergarten readiness, physically active middle and high school students) to name a few. Other areas (e.g., healthy births, child abuse rates, school absences, health behaviors) did not display consistent upward or downward trends.

When examined by race, we see that while there has been progress in certain areas, there remains ongoing disparities or disproportionality for Black and Hispanic children in most areas of health and well-being across the developmental spectrum. It should be noted that the time periods covered are pre-COVID-19 pandemic and we are likely to see racial disparities exacerbated as a result of the pandemic.

To access the complete slide deck and companion guide containing definition and source information, click [here](#).

Navigating Virtual Learning

The COVID-19 pandemic continues to threaten our community's health and safety, making virtual learning the current reality for many Palm Beach County children and families. This will be very difficult for our working families, especially those with elementary school-aged children, who need a safe place for their children to go. After The School District of Palm Beach County made the decision to start the school year virtually, a group of community partners met to discuss issues, and evaluate possibilities, for those children whose parents have to go to work. A group of partners also are working on identifying technology needs.

The group released two surveys to get a better understanding of the challenges facing our community's families. The first

survey, of families whose children attended summer camp this year, found that 60% of parents need in-person child care during the school year. The second survey, of which we are awaiting results, was given to child care organizations to determine their needs.

While we analyze survey results, the team is discussing possible locations for child care, along with licensing issues, technology needs and budget implications. We will continue to strategize next steps and will keep the community posted as we develop solutions to this unique situation.

Organizations included in this initiative are:

Children's Services Council of Palm Beach County

Palm Beach County Youth Services Department

The School District of Palm Beach County

Prime Time Palm Beach County

Early Learning Coalition of Palm Beach County

United Way of Palm Beach County

Legal Aid Palm Beach County

Community Foundation Palm Beach County

Pew Foundation

Quantum Foundation

Department of Children and Families

Frederick A. DeLuca Foundation

COVID-19 Ad Hoc Gaps Committee

In early April, Birth to 22’s Steering Committee operationalized a COVID-19 Ad Hoc Gaps Committee to address how best to use the Alliance’s resources to support pandemic response planning and recovery efforts. The committee has met weekly since that time in an effort to explicitly support system leaders in thinking through solutions that address the current health and racial pandemics. Racial equity has been the essential driver of its work. The Gaps Committee recognizes that multiple strategies would be needed to address the disproportionate gaps faced by communities of color. It is in the process of refining its recommendations outlined in Table 1 below to be more intentional in identifying strategies that focuses on reducing racial disparities in the four areas the group has been tackling to date.

1. Digital divide and related educational equity issues
2. Access concerns for child care, summer and afterschool
3. Rising need for behavioral health supports due to the

COVID-19 pandemic.

4. Child Safety—child maltreatment and domestic violence

Table 2 shows the committee’s initial prioritized areas for action for which it will seek to engage system and sector leaders to assume accountability for implementation. Some of these identified areas could also be areas in which the Birth to 22 Alliance activates its leadership and resources and provide primary responsibility to implement the slated recommendations.

Birth to 22 United for Brighter Futures remains committed to centering racial equity in its pandemic response efforts and marshaling its resources into collective action to ensure our community has access to the needed health and human services supports for a safe and equitable recovery from the COVID-19 pandemic.

Table 1: Full COVID-19 Gaps Committee Recommendations

Educational Equity	Access Equity (child care, summer and afterschool)	Behavioral Health Supports
Continue to support the School District of Palm Beach County in communications review of materials for children and families to ensure needs and supports for families/communities are effectively represented.	Support the Early Learning Coalition of Palm Beach County as it explores opportunities to incentivize child care centers to accept school readiness payment kids during the economic distress.	Encourage employers to allow telework as appropriate to meet families’ needs.
Continue the outreach efforts to illicit parent/youth and community feedback, share broadly, and encourage family engagement.	Explore and develop platforms for parents to enable ease of access for information related to the COVID-19 pandemic response efforts to address issues identified by the Birth to 22 Gaps work.	Explore technology platforms that meet cultural and linguistic needs of families.
Partner and support the purchasing of internet essentials to meet the needs of vulnerable communities.	Support Prime Time Palm Beach County in efforts to incentivize virtual training and provide expanded virtual options for out-of-school time supports.	Use Birth to 22 platforms to recognize therapists and other support professionals as essential workers.
Leverage power to advocate for expanded Wi-Fi networks and hardware devices for students in need.	Partner and support the purchase of technology tools to meet the need of vulnerable communities. (I.e. Chromebooks, internet access, headsets, etc.).	Support efforts to bolster use of natural/informal care as essential supports to the behavioral health community.
Continue to work with the School District of Palm Beach County, Achieve Palm Beach County and other partners to explore impacts of the pandemics for college aid students and postsecondary opportunities.	Review the language around licensing sites for school age care during virtual learning to ensure children have safe spaces for learning.	Increase commitment and explore strategies for greater employer participation in self-care promotion.

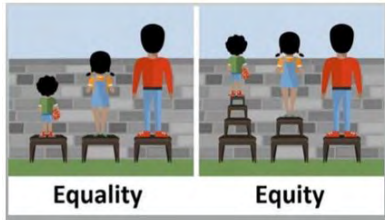
Educational Equity	Access Equity (child care, summer and afterschool)	Behavioral Health Supports
Explore and implement options to support distance learning through community provider platforms as schools reopen virtually.	Partner with businesses and childcare/afterschool communities to explore new business model for funding due to the COVID-19 pandemic.	Stress and communicate the importance of early identification of potential behavioral health issues and prevention.
Explore the impact of distance learning on care-giving youth, English-Language Learner (ELL), Exceptional Student Education (ESE) and other special populations and ensure needed supports are in place when school resumes.	Support advocacy to the District for utilization of campuses for larger summer camps.	Expand training opportunities in effort to meet the rising needs for mental and behavioral health.
		Increase trauma and grief loss supports for children who may be impacted by the COVID-19 pandemic and halted transitions.
		Work with local partners to examine data and support efforts to investigate long-term trauma for children and adults experiencing trauma resulting from the COVID-19 pandemic.
		Use Birth to 22 resources to extend efforts, to share stories and positive learning experiences, shared by the community through Sensemaker, which is qualitative research, and other platforms.

Table 2: Prioritized Areas for Action

Educational Equity	Access Equity (child care, summer and afterschool)	Behavioral Health Supports
Continue the outreach efforts to illicit parent/youth and community feedback, share broadly, and encourage family engagement.	Review the language around licensing sites for school age care during virtual learning to ensure children have safe spaces for learning.	Increase trauma and grief loss supports for children and their family who are may be impacted by the COVID-19 pandemic and halted transitions.
Explore and implement options to support distance learning through community provider platforms as schools reopen virtually.	Partner and support the purchase of technology tools to meet the need of vulnerable communities. (I.e. Chromebooks, internet access, headsets, etc.).	
Partner and support the purchasing of internet essentials to meet the needs of vulnerable communities.		
Explore the impact of distance learning on caregiving youth, English-Language Learner (ELL), Exceptional Student Education (ESE) and other special populations and ensure needed supports are in place when school resumes.		

Florida Race Equity Challenge

The Florida Race Equity Challenge is presented by Florida Youth Justice Commission. Its goal is to educate Florida stakeholders in understanding the issues affecting race equity and develop the tools and strategies that will allow each circuit to make a positive impact in their communities.



To achieve race equity stakeholders must discuss, investigate and evaluate complex systems to understand and improve the systematic, structural and paradigm issues that contribute to disparities between races.

The Florida Race Equity Challenge has been accepted throughout Florida. Through an eight session webinar series structured into an introduction to the work and three blocks, information is disseminated and collaborative briefing occur to address race equity. Block I, assesses personal perspectives in two webinar session, “Swords and Shields” and “Implicit Bias.” Block II marks the beginning of system analysis in two webinar sessions, “Utilizing Data” and “Assessing Race Equity in Policies.” The final Block, tackles changing the system. This is done via three webinars “Addressing Changing Our Lens,” “Equality Florida” and

“Race Equity Work Beyond Implementation.”

After each block, teams are encouraged to compete in three challenges to have a structured race impact conversation, complete data review and determine local next steps and to make proposals for change.

Members of Palm Beach County Youth Services Department (Tammy K. Fields, Geeta Loach-Jacobson and Ike Powell III.) are a part of Circuit 15 (Palm Beach County) Team along with representatives from the Department of Juvenile Justice, Office of the Public Defender, Office of the State Attorney, Court Administration, Criminal Justice Commission, Law Enforcement and numerous youth serving agencies in Palm Beach County. As Team Palm Beach County, we are addressing how we can create a more equitable system; determining who we need to assist in implementing the changes; what policy modifications are needed; what obstacles and resource needs to be considered; and, how can we measure the effectiveness of the changes.

As we continue to look at racial equity for Palm Beach County, we are mindful of the six conditions of systems change and the efforts needed by all to normalize the discussion in order to make the transformative change, organize to address power dynamics and operationalize to facilitate structural changes.

Youth Summit



On June 20, the Youth Summit Committee hosted the first virtual Youth Summit: ‘QuaranTEEN Summer Bash’ for middle and high school youth. Due to the COVID-19 pandemic, the 10th annual Youth Summit at Palm Beach Lakes High School was postponed. Several youth partners didn’t want to miss the opportunity to connect with other Palm Beach County teens, so they united with the committee to plan a short version of the Youth Summit. The event was created by teens for teens. The youth received education on drug prevention from the Teens

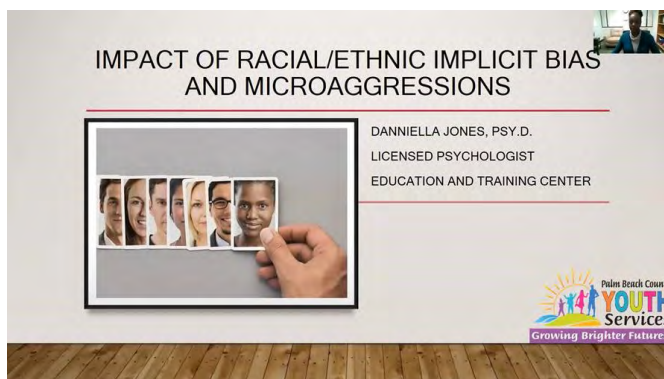
Coalition in Action; Crime prevention through the Juvenile Justice Advisory Board Consequence of Crime video; the non-profit organization, Philanthropy Tank, invited student “changemakers” to apply for funding opportunities to develop and implement community impact projects; and there was an inspiring message from The Future Leaders: United for Change for youth to use their voice and remain safe and crime free. The event emanated the same energy as the annual Youth Summit with lots of fun activities such as a TIK TOK dance contest and trivia games with

cash prize giveaways. Florida State Senator Bobby Powell, Jr., Palm Beach County Commissioners Melissa McKinlay and Greg Weiss, West Palm Beach City Commissioner Cory Neering and Lake Worth Beach Commissioner Omari Hardy, and Boynton Beach Mayor Steven Grant congratulated the new high school graduates and shared messages of encouragement and empowerment for all Palm Beach County teens. And of course, entertainment was provided by the “one and only” Digital Vibez, Inc. crew for the almost two-hour event. Be ready Palm Beach County Teens! The Youth Summit: Quaranteen Summer Bash part two is in the

works! More information to come soon.

Collaborative partners of the Youth Summit include: Palm Beach County Sheriff’s Office, Palm Beach County Youth Services Department, Palm Beach County Behavioral Health Coalition, School District of Palm Beach County, Palm Beach County Public Safety, Palm Beach County Parks and Recreation, Birth to 22, Department of Juvenile Justice, Urban League of Palm Beach County, West Palm Beach Police Department, Michael Joseph Brinks Foundation, Choice to Change, Planned Parenthood, and Eta Phi Beta.

Microaggression Training



Palm Beach County Youth Services Department’s Education & Training Center’s Danniella Jones, Psy.D. presented “Impact of Racial/Ethnic Bias and Microaggressions,” for staff and mental health providers in the community on multiple dates to accommodate the overwhelming requests to receive more information and training surrounding the topic.

The presentation defined racial and ethnic microaggressions and implicit bias, described the impact of implicit bias and microaggressions on persons of color, and developed strategies to increase awareness of bias and mitigate negative consequences of those who are impacted.

Dr. Jones also collaborated with Palm Beach County TV Channel 20, to prerecord a segment to offer insight to the public on how implicit bias plays a major role in our daily lives while providing strategies such as self-reflection to better understand our own biases and how to mitigate negative reactions.

The Education and Training Center has scheduled additional training dates and is producing prerecorded segments on implicit bias and providing strategies to mitigate impacts to persons of color in Spanish and in Creole.

Click [here](#) for more information or to request a training.

The VoiceBox Podcast



Futures Leaders United for Change is launching a new podcast series, which features head-to-head discussions between a young person and a community leader.

The Podcast is divided in to three segments and each

participant has two minutes to discuss five points on their predetermined topic. The topics are based on the six Birth to 22 Action Areas.

To listen to a sneak peek, click [here](#).

Palm Beach County Funders Group

For many years, local funders in Palm Beach County – both philanthropic and government - have worked together to help the nonprofit community respond to, and recover from, disasters. The current COVID-19 pandemic is no exception. In March, the funders in Palm Beach County joined together to establish a coordinated Coronavirus (COVID-19) Relief and Recovery application process. This funding process provides assistance to nonprofit organizations in Palm Beach County whose staff, services and clients have been impacted by this disaster. Funding priorities include:

- Emergency food, shelter and other basic needs
- Expansion of service capacity related to increased demand for direct services
- Access to health care services for uninsured and underinsured clients
- Technology and other resources to allow organizations to continue to provide services

As of August, over 540 agencies have applied, totaling more

than \$28.5 million in requests. The funders have been able to grant over \$6.2 million to 160-plus organizations.

In addition to providing funding to individual nonprofit organizations, funders have built on this collaboration to address emerging issues caused by the pandemic. Some have pooled resources to buy Wi-Fi hotspots and pay for internet access for students who otherwise would not be able to participate in distance learning; others have purchased and distributed Personal Protective supplies (PPE) for nonprofit organizations.

Palm Beach County Youth Services and Community Services departments have been actively involved in reviewing and coordinating this overwhelming community response to the COVID-19 pandemic. The Palm Beach County Funders Group will continue to support the nonprofit community in helping county residents through this pandemic, and are prepared to help in times of any disaster.

The Palm Beach County Funders Group Include:

Admirals Cove Foundation
Allegany Franciscan Ministries
Bank of America
Children's Services Council of Palm Beach County
Community Foundation for Palm Beach and Martin Counties
Florida Blue Foundation

Lost Tree Foundation
Mary and Robert Pew Public Education Fund
Palm Health Foundation
Quantum Foundation
United Way of Palm Beach County
Ventus Charitable Foundation

Logic Model Training

Jeff Goodman and Beth Halleck of the Children's Services Council of Palm Beach County provided a half-day training on the development and application of logic models to the work of the Birth to 22 Action Teams. The session was organized to include three action teams including Safety and Justice, Social Emotional Learning and Strengthening Quality (OST). The workshop was well attended with a total of 28 representatives participating.

The training started with an overview of the purpose and elements of logic models along with their relationship to desired outcomes. Attendees were exposed to examples

of logic models at the program and system level and given opportunity to work with their team to begin to create a logic model to serve as a road map for future work.

Participants were engaged and initial feedback suggests that groups found the session helpful in better defining and aligning their efforts as a team. Additional support is available to the attendees who would like trainer input on the completed logic model for their action team. Based on the initial uptake and response, there is a plan to schedule future workshop(s) for action teams that have a desire to access this support.

Super Summer Spelling Bee



Palm Beach County Youth Services hosted its sixth annual Super Summer Spelling Bee on July 14. This year, the competition was held virtually with over 150 campers from 27 Summer Camp Scholarship Program sites participating.

“Using a virtual platform, we embraced the need for safety and social distancing while highlighting our children’s resilience and capacity to learn and grow over the summer months,” said Geeta Loach-Jacobson, director of the Outreach and Community Programming Division. “This Super Summer Spelling Bee is a product of the dedication, community engagement and partnership of our parents, camp staff and funders. I am extremely proud of the work that we continue to do for and with the children of Palm Beach County.”

Using Kahoot!, a virtual learning-based platform, campers’ spelling skills were tested through identifying the correct spelling of a spoken word, filling in the blanks, listening and typing the correct spelling of a word, and selecting the correct word in a sentence. The spelling bee provides academic activities to encourage the spirit of learning while preventing summer slide.

Participating agencies include the County Attorney’s Office, Community Services, the Public Defender’s Office, The Palm Beach Post, Prime Time Palm Beach County, Friends of Youth Services and Palm Beach County, Inc., the city of West Palm Beach, and Florida Power & Light.

Spelling Bee Winners

K-2nd	3rd-5th	6th-8th	9th-12th
Jordan Grant East Coast Flam Allstars	Alany Jean Digital Vibez. Inc.	Christopher Marquez City of Greenacres	Destiny Haynes Destiny Fulfilled
Kayla Farmer Digital Vibez, Inc.	Kailey Brown East Coast Flame Allstars	Shane Gimmy Quantum Youth	Jermaine Lovely Boys & Girls Club – Belle Glade Teen Center
Jade McCoy Destiny Fulfilled	Addie Lafortune Achievement Center	Zona Black Preparing Tomorrow’s Leaders	Keiana Haines Destiny Fulfilled

Alliance Spotlights

BeWellPBC and Healthier Together initiatives: Healthier Boynton Beach, Healthier Delray Beach, and Healthier Neighbors, hosted mini-grant opportunities this summer to encourage Palm Beach County residents, nonprofit and for-profit groups, faith-based organizations, educational facilities and local municipalities to share their creative ideas for community health and well-being. Workshops, grant-writing assistance, and simplified application processes were offered to help first-time and seasoned applicants submit a proposal with ease. Public online voting and panels made up of community members helped

to determine the winning grants. Celebrations featured on Facebook Live throughout the month of July announced the new grantees and invited the larger community to learn about each project. With grants ranging from \$1000-\$5000, sixty-seven awardees located across the county are already beginning to implement virtual events, support services, wellness programming, and start-up businesses that will benefit the overall health of Palm Beach County.





Under the leadership of Governor Ron DeSantis, the Florida Department of Children and Families (DCF) applied good cause and suspended work requirements for public benefits for the months of March, April, May, and June,

allowing Floridians to focus on caring for themselves and their loved ones at the height of the COVID-19 pandemic.

At this time, the state is at varying levels of recovery, and therefore, the Governor has directed DCF to postpone the reinstatement of work requirements through the end of August.

This flexibility is intended to support individuals and families during this transitional period, while also providing them with the resources they need to pursue job opportunities and eventually attain their own version of economic independence.

Local Workforce Development Boards (CareerSource

Boards) have reopened – they are on standby to assist with these efforts, and they are also working to offer safe, virtual options.

Through August 31, public benefits were not terminated for Floridians who do not comply with work requirements. The Governor will coordinate with DCF to reevaluate the implementation of work requirements in the coming months.

Additionally, the following is still in place for SNAP recipients:

- SNAP benefit amounts were increased to the maximum monthly allotment based on household size for or the months of March, April, May, June and July.
- In late April, Florida began participating in the United States Department of Agriculture's pilot program for SNAP recipients to purchase groceries online (through Walmart and Amazon) with the use of an EBT card.

For more information, click [here](#).



Throughout the month of May, Palm Beach County celebrated Mental Health Awareness and Trauma Informed Care Month by participating in the 5th annual Get Your Green On campaign.

Beginning with the kickoff event on May 1, with more than 1,200 people joining on Facebook Live, the GYGO campaign went completely virtual this year. All month, community shared videos of their favorite mental health tips, agencies hosted behavioral health trainings and workshops on Zoom, school staff and students created posters and information

to share via their web-based sites, buildings were lit up green to show support, and local businesses got involved offering discounts online for self-care products. On May 21, the Get Your Green On day, thousands of residents wearing green posted pictures across social media and a special virtual concert was hosted by Young Singers Palm Beaches.

Congratulations to the Birth to 22 Get Your Green On Subcommittee for their exceptional planning and to everyone in Palm Beach County for honoring your behavioral health and wellness.



United Way of Palm Beach County has launched two resources to aid in hunger relief:

United Way of Palm Beach County Food Finder Map is an interactive tool using Google Maps to help people easily locate free food and hot meals in Palm Beach County. This online tool was created to connect individuals seeking food resources to sites near them. Information is English, Spanish, and Creole. United Way updates the information listed on this map weekly. However, locations and hours of distribution may change. Please consider calling the site prior to visiting to verify information listed. Please note that sites may have specific requirements such as showing proper forms of IDs. Click [here](#) to view the map. If you would like to include your organization's resources on the map, please fill out this Food Finder Interest [Form](#).

Additionally, The 'FOOD FOR KIDS' Survey is a short, online survey for parents to help identify the best ways to improve

food resources delivery in Palm Beach County, based upon parent input. We want to ensure that children and families have access to food as the pandemic continues and schools are not open and beyond. Link to [survey](#).

- Information will not be used for any other purpose and is strictly confidential.
- There are drop downs in the survey questions that provide the opportunity for the responder to share additional information.
- After the survey is completed there is a landing page that provides additional information for food resources.
- Survey is included with the Food Finder Map.
- Survey will be online for at least four weeks.

A print version of the survey is planned for the coming weeks to capture information from those who don't have phones or internet access.



CareerSource Palm Beach County’s Young Adult program has leveraged technology to provide our acclaimed

Career Prep work readiness class virtually to young adults in light of current COVID-19 restrictions. The course has been condensed from the original five-weeks down to two-

weeks, but the content and quality are the same. Our first class was held July 6 – July 17 with great success, and we are currently running our second class with ten enthusiastic and engaged young adults. Our next class is projected to begin August 31 through September 11.

For more information, please contact us at youthteam@careersourcepbcc.com.



The Unicorn Children’s Foundation hosted the Unicorn Connection Job Club from April

19 – June 28, a nine-week program designed to help individuals with special needs find a career path that will lead to a successful, happy, and self-sufficient future. Seventeen young adults with special needs registered for this first attempt to provide virtual support services during the pandemic quarantine. They learned valuable interview skills, including how to interview using a virtual format, how to look into camera, dressing for an online interview, and speaking clearly. Participants practiced responding to general and job specific interview questions. Mock interviews were held using a Zoom Breakout and waiting rooms to give the feeling of a real interview. Feedback was provided on an individual basis.

from a VR vendor was discussed by the facilitator. During another session, a representative from the Florida Atlantic University Academy for Community Inclusion presented on this college program for students with intellectual disabilities.

Most participants lacked the background knowledge needed for completing online applications, so a session was spent discussing what information they needed to have on hand to complete a job application. A cheat sheet worksheet was provided. They also rehearsed requesting a job application at a business. Participants were given group and individual time to create their resume. Resumes were made to look more appealing highlighting each individual’s skills and experience.

Participants learned how to navigate the Job Search on the CareerSource and Indeed websites by location and job description. CareerSource representatives provided an overview of their services during one session. An overview of the VR services, eligibility process and what to expect

This program is open to individuals with an intellectual/developmental diagnosis who are between 16 and 29 years old and are working or seeking a job. Applications to participate in the Fall cohort will be made available shortly at our [website](#). The club will take place September 1 through October 28 (9 weeks) on Tuesdays or Wednesdays from 5:30 – 6:30 PM.

Prime Time Palm Beach County Inc. transformed its offerings to support the needs of Palm Beach County in the out-of-school time (OST) space.

programs.

With the support of the Children’s Services Council of Palm Beach County, Prime Time Palm Beach County, an OST intermediary that connects afterschool and summer programs to a menu of resources and offerings to increase their overall quality, has adapted to the needs of the community by redesigning its offerings so children can continue learning and afterschool and summer programs can continue their climb to high quality.

Take a look back at Prime Time Palm Beach County’s 2018-2019 impact, milestones and successes within the out-of-school time field.

A “rocket ship” graphic is used throughout the report to indicate Prime Time is not slowing down in the pursuit of quality to support our community’s children.



The 2018-2019 annual report video can be viewed [here](#).

Collective Impact Pledge

Birth to 22 is committed to a common agenda, we are an alliance of community partners that engages and aligns existing coalitions, networks, systems and youth-serving organizations as well as connecting families, community members, and most importantly, young people.

Take the *Pledge*, be listed as a Collective Impact Partner

of the Birth to 22 Alliance to improve outcomes from cradle to career for all Palm Beach County children, youth and families, and will provide support as provided on the attached.

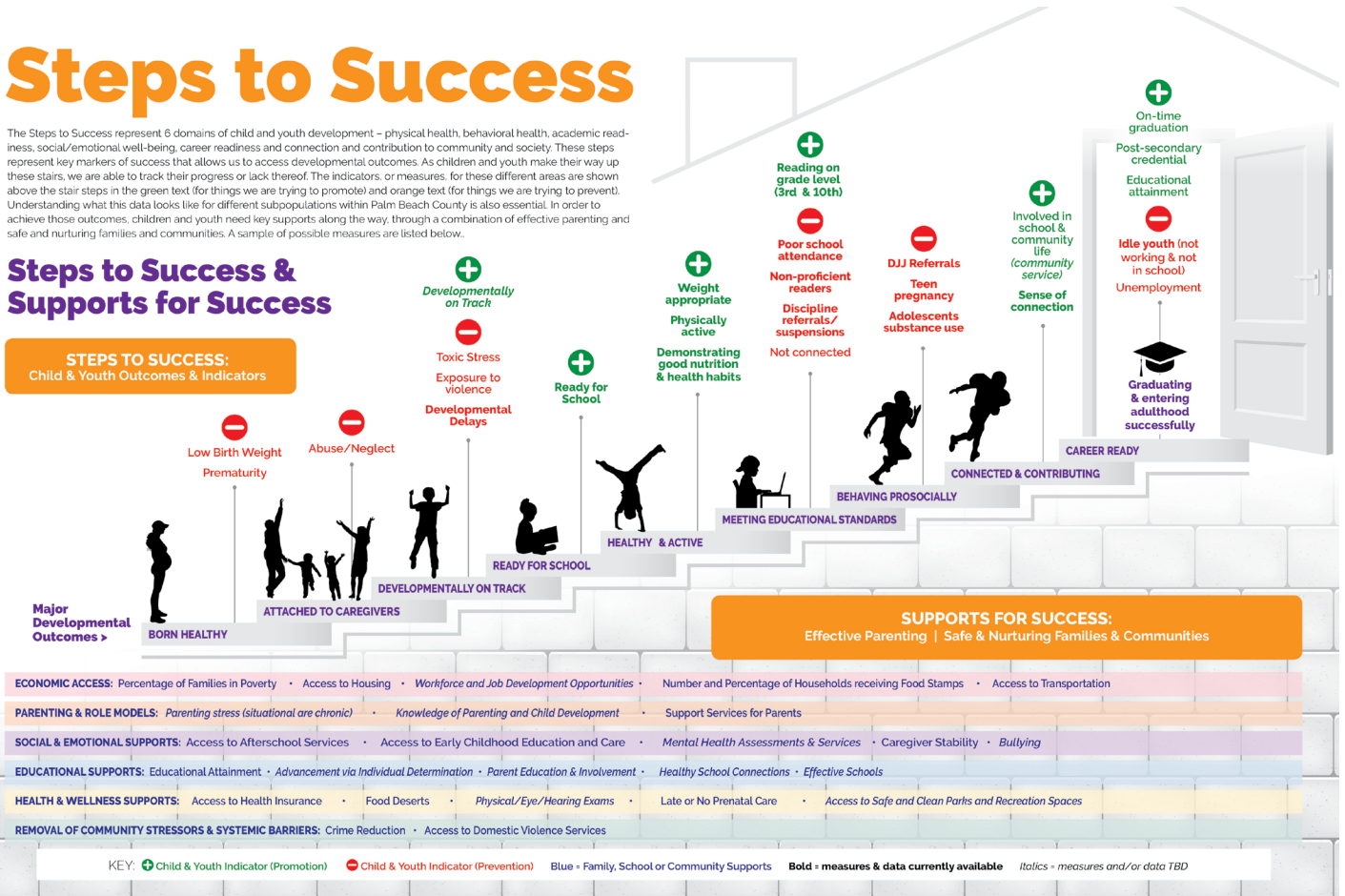
Click [here](#) to join us in envisioning and creating a culture that values our youth from cradle to career.

Steps to Success

The Steps to Success represent 6 domains of child and youth development – physical health, behavioral health, academic readiness, social/emotional well-being, career readiness and connection and contribution to community and society. These steps represent key markers of success that allows us to access developmental outcomes. As children and youth make their way up these stairs, we are able to track their progress or lack thereof. The indicators, or measures, for these different areas are shown above the stair steps in the green text (for things we are trying to promote) and orange text (for things we are trying to prevent). Understanding what this data looks like for different subpopulations within Palm Beach County is also essential. In order to achieve those outcomes, children and youth need key supports along the way, through a combination of effective parenting and safe and nurturing families and communities. A sample of possible measures are listed below.

Steps to Success & Supports for Success

STEPS TO SUCCESS:
Child & Youth Outcomes & Indicators



SUPPORTS FOR SUCCESS:
Effective Parenting | Safe & Nurturing Families & Communities

ECONOMIC ACCESS: Percentage of Families in Poverty • Access to Housing • Workforce and Job Development Opportunities • Number and Percentage of Households receiving Food Stamps • Access to Transportation
PARENTING & ROLE MODELS: Parenting stress (situational are chronic) • Knowledge of Parenting and Child Development • Support Services for Parents
SOCIAL & EMOTIONAL SUPPORTS: Access to Afterschool Services • Access to Early Childhood Education and Care • Mental Health Assessments & Services • Caregiver Stability • Bullying
EDUCATIONAL SUPPORTS: Educational Attainment • Advancement via Individual Determination • Parent Education & Involvement • Healthy School Connections • Effective Schools
HEALTH & WELLNESS SUPPORTS: Access to Health Insurance • Food Deserts • Physical/Eye/Hearing Exams • Late or No Prenatal Care • Access to Safe and Clean Parks and Recreation Spaces
REMOVAL OF COMMUNITY STRESSORS & SYSTEMIC BARRIERS: Crime Reduction • Access to Domestic Violence Services

KEY: + Child & Youth Indicator (Promotion) - Child & Youth Indicator (Prevention) Blue - Family, School or Community Supports **Bold** = measures & data currently available *Italics* = measures and/or data TBD



Editor/Graphics
Erin Baker