

Street Report

CLEAN, SAFE AND FRIENDLY | MARCH 2021



**Downtown
Worcester**

The following data and information is provided to the Downtown Worcester Business Improvement District for tracking purposes. The information contained in this report is for activities reported in March 2021. The data and information are obtained from Ambassadors conducting patrols and entered in Statview.



Clean + Safe + Friendly

Street Report

DOWNTOWN WORCESTER BUSINESS IMPROVEMENT DISTRICT

CLEAN, SAFE AND FRIENDLY REPORT | MARCH 2021



Ambassadors continue to prioritize daily check-ins with businesses and are always available to answer questions for pedestrians and visitors to Downtown Worcester.



Big plans are in the works for Allen Court. Our Ambassadors are so excited to see what's in store and will be on hand to help keep the area clean and safe.



It is a sure sign of spring when we welcome back Worcester's Mounted Police Patrol. If you see them in the district, be sure to give them a wave!



Graffiti Removal



Before



After



Before



After

Flyer Removal



Before



After



Before



After

Street Report

DOWNTOWN WORCESTER BUSINESS IMPROVEMENT DISTRICT

CLEAN, SAFE AND FRIENDLY REPORT | MARCH 2021

Sidewalk/Curb Detailed Cleaning



Before



After



Before



After

Ambassadors in Action



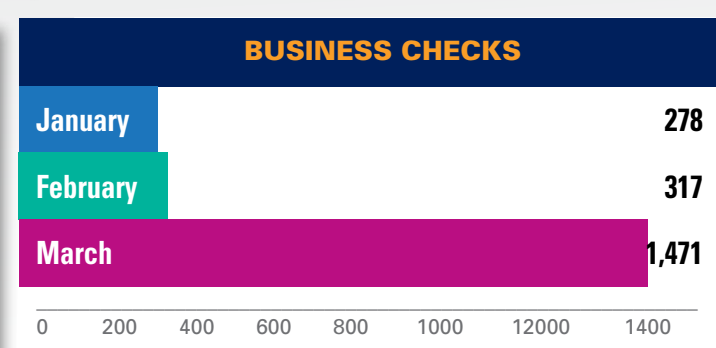
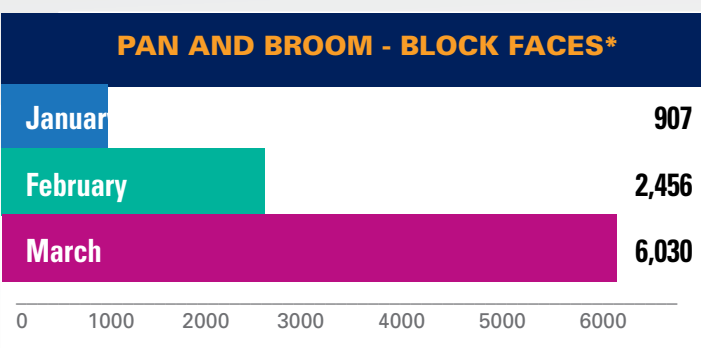
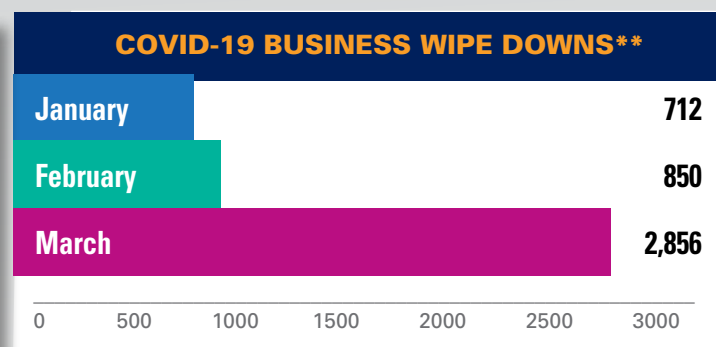
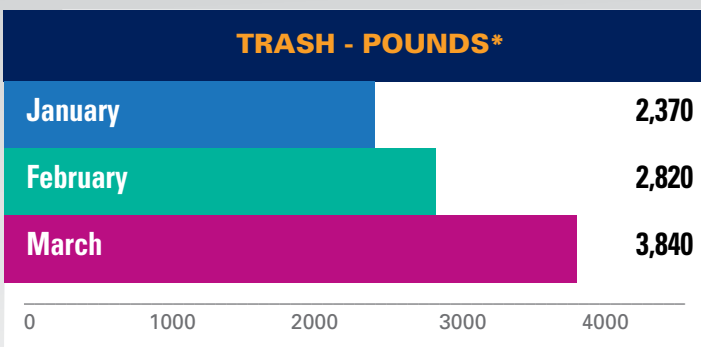
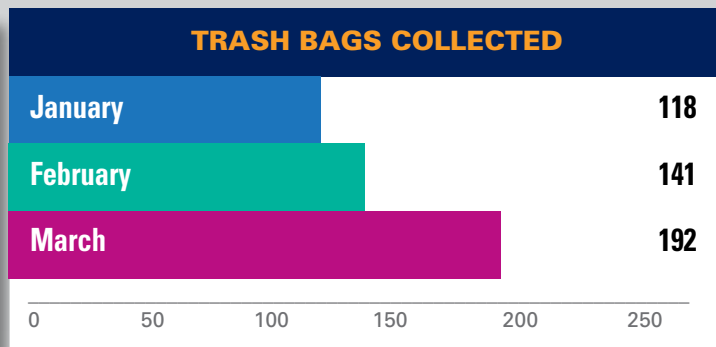
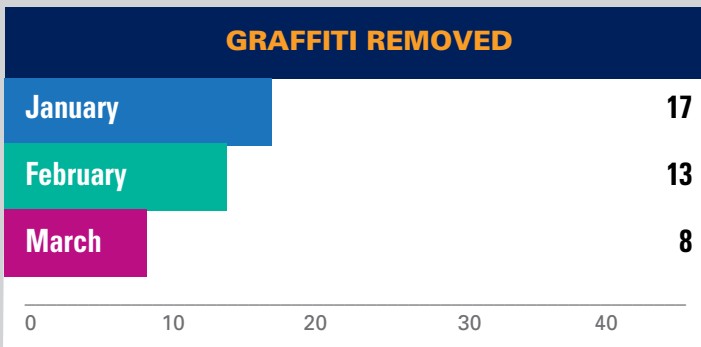
During the month of March 2021, the Ambassadors have provided the following services:

DEPLOYED HOURS TOTAL: 965.00

CLEAN TEAM	
January	628.25
February	620.00
March	801.00

OPERATIONS MANAGER	
January	160.00
February	160.00
March	164.00

CLEAN TEAM STATS

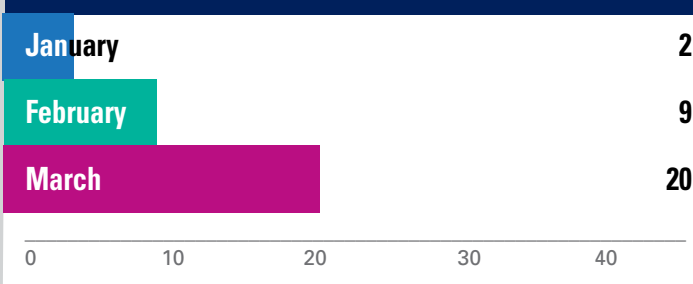


Street Report

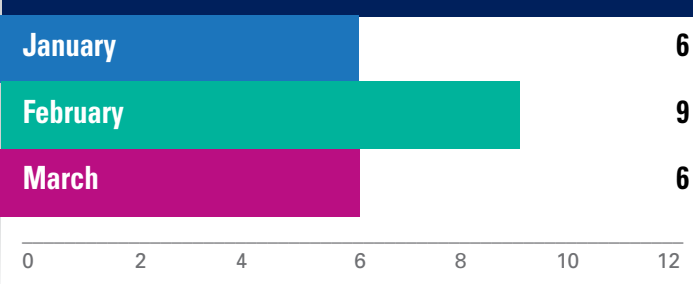
DOWNTOWN WORCESTER BUSINESS IMPROVEMENT DISTRICT

CLEAN, SAFE AND FRIENDLY REPORT | MARCH 2021

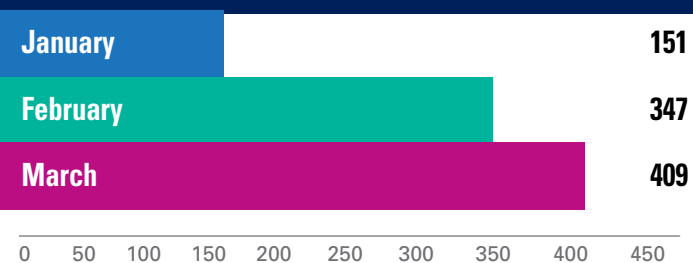
SERVICE TO CITIZENS (DIRECTIONS)



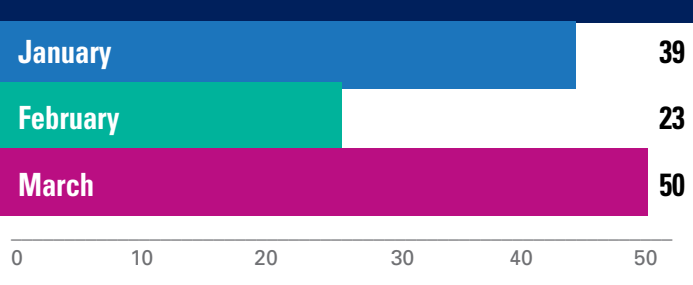
NEEDLES REMOVED



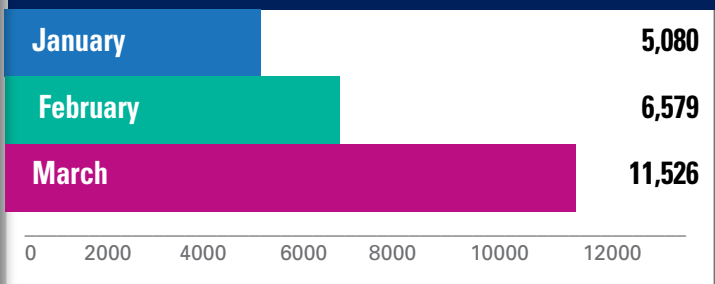
Continued on next page **ANIMAL WASTE**



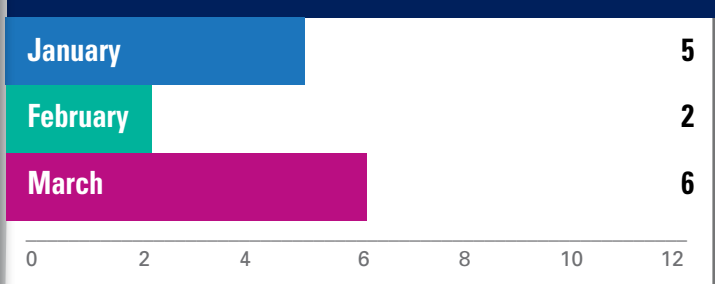
STICKERS REMOVED



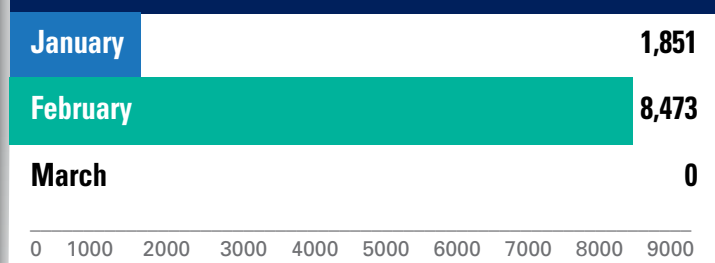
CIGARETTE BUTTS



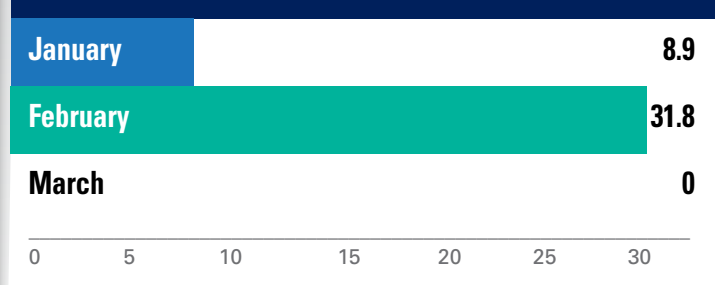
HUMAN WASTE



ICE MELT POUNDS



SNOW FALL (INCHES)



CURB CUTS SHOVELED



* Pan and Broom statistics include trash collected from Mercantile Plaza trash bags, garbage bags filled and pulled from our mobile rolling garbage cans from debris throughout the district, trash collected by our Windsor sweeper throughout the district, and any illegal dumping of trash that we collect. All garbage is collected and placed into garbage bags which we calculated to weigh on average 20lbs. each.

** The Covid-19 business wipe down is a daily effort to disinfect store front door handles while also ensuring that the surrounding area is clean and safe.