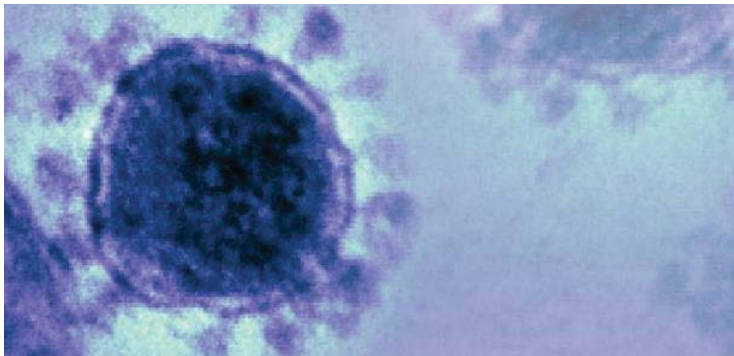


Department of State Health Services

GovtAffairs@dshs.texas.gov | 512-776-7263



2019 Novel (new) Coronavirus

BACKGROUND

A new coronavirus (2019-nCoV) was detected in December in Wuhan City, China and is causing an outbreak of respiratory illness. China has reported over 20,000 cases including over 400 deaths. The U.S. has reported 11 confirmed coronavirus cases, the majority of which are travel related. The only U.S. cases of person-to-person contact involve transmission among spouses living in the same home.

NATURE OF NOVEL CORONAVIRUS

Coronaviruses are commonly spread human to human in ways that will sound familiar – because they are also true for illnesses like the cold or the flu. For example, coronaviruses are most commonly spread through:

- respiratory droplets released into the air by coughing and sneezing;
- close personal contact, such as touching or shaking hands with someone who is infected;
- touching an object or surface with the virus on it, then touching your mouth, nose, or eyes before washing your hands.

The most common symptoms of coronavirus are also like the common cold:

- Fever
- Cough
- Shortness of breath

The illness can become severe, more commonly in the elderly and those who have underlying health conditions.

WHAT IS THE RISK TO TEXAS?

Texas has no confirmed cases of coronavirus at this time, although Texas has been monitoring and testing individuals with recent travel to the Hubei Province or mainland China.

The risk to the Texas and the U.S. remains low at this time. The federal government, with the support of state health departments, is taking a layered approach to keep the risk low. This layered approach includes: travel [limitations](#), airport [funneling](#) and [screenings](#), prevention education, and public health monitoring for individuals with recent travel to China or exposure to the virus.

WHAT IS DSHS DOING?

For Texas, DSHS leads the state's medical and public health emergency response to ensure consistent, science-based actions to protect the health of Texas. In that vein, DSHS has activated the State Medical Operations Center, which serves as a hub for the Texas response, promoting an organized and consistent statewide approach. Specific DSHS actions include:

- Consulting with local health departments daily on individual situations to promote a consistent public health response throughout Texas
- Holding daily calls to provide updates and answer questions for public health and health care partners
- Developing and publishing technical guidance documents for public health and health care
- Updating the coronavirus website with materials for various audiences
- Providing higher education, public education, and county officials weekly briefings
- Engaging with Lackland Air Force Base and the DFW Airport to ensure readiness for inbound travelers from China
- Opening a 1-800 coronavirus call center to receive questions, effective Monday, February 10

HOW TO STAY INFORMED

DSHS is continually updating its Novel Coronavirus [webpage](#) with new information as it becomes available. If your office is interested in receiving more frequent updates, please contact govtaffairs@dshs.texas.gov.

If you have:



Graphic Courtesy of the California Department of Public Health