

**Community
Quarterly
Meeting
August 18, 2022**

WELCOME

to *your*
Community
Quarterly Meeting

Puyallup Tribe Official Land Acknowledgement

We acknowledge that we are on the traditional homelands of the Puyallup Tribe. The Puyallup people have lived on and stewarded these lands since the beginning of time, and continue to do so today. We recognize that this land acknowledgement is one small step toward true allyship and we commit to uplifting the voices, experiences, and histories of the Indigenous people of this land and beyond.

Mission and Vision

Mission: To love and serve the needs of neighbors experiencing homelessness.

Vision: Communities of faith and social goodwill are educated and actively applying their essential abilities to help address and prevent homelessness in Pierce County, through engagement with social service agencies and other innovative programs.

Purpose Statement

Associated Ministries convenes these meetings in partnership with other homeless and housing service providers working in Pierce County, with the goal of creating an energizing space to gather regularly to learn about, discuss and take action on the crisis of homelessness in our community.

What Will We Achieve?

1. Bring like-minded people together!
2. Inform and educate attendees about homelessness in our community
3. Seek understanding of effective interventions
4. Discuss potential projects and solutions to positively impact homelessness

COMPREHENSIVE PLAN TO END HOMELESSNESS

Gerrit Nyland
Pierce County Human Services

Rob Huff
Tacoma Pierce County Coalition to End Homelessness





PROCESS



18-member Steering Committee

- Providers
- Philanthropic
- Puyallup, Lakewood and City of Tacoma
- Puyallup Tribe
- Business
- Continuum of Care
- Coalition to End Homelessness
- People with Lived Experience
- Community Members
- Affordable Housing
- Faith Community



7 Subcommittees

- Targeted Universalism and Accountability
- Homeless Prevention
- Permanent Housing Interventions
- Temporary Housing and Navigation Interventions
- Medical and Behavioral Health Connections
- Funding Source Development
- Prioritization Approach



Community Engagement

- Presentations to Community Groups
- On-line open house
- Meetings were open to the public

COMMUNITY SUCCESS

NOT ONLY PROGRAM FOCUS



Functional Zero



Targeted Universalism



Collaboration



Shelter

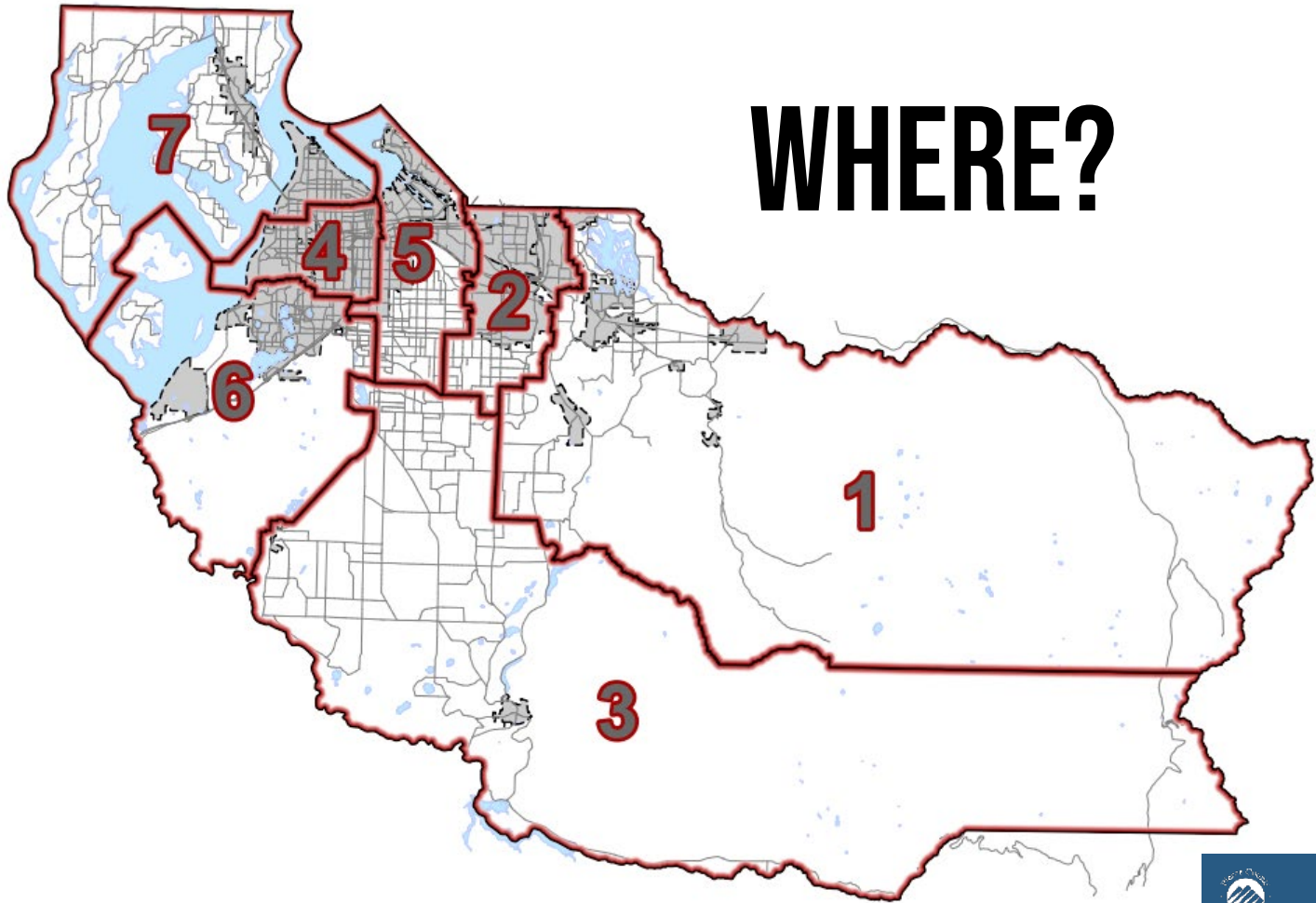


Funding

Unsheltered Homeless Estimate

Clients Currently Homeless	4,300
Current Shelter beds	1,300
Additional Shelter Beds Needed	3,000

WHERE?



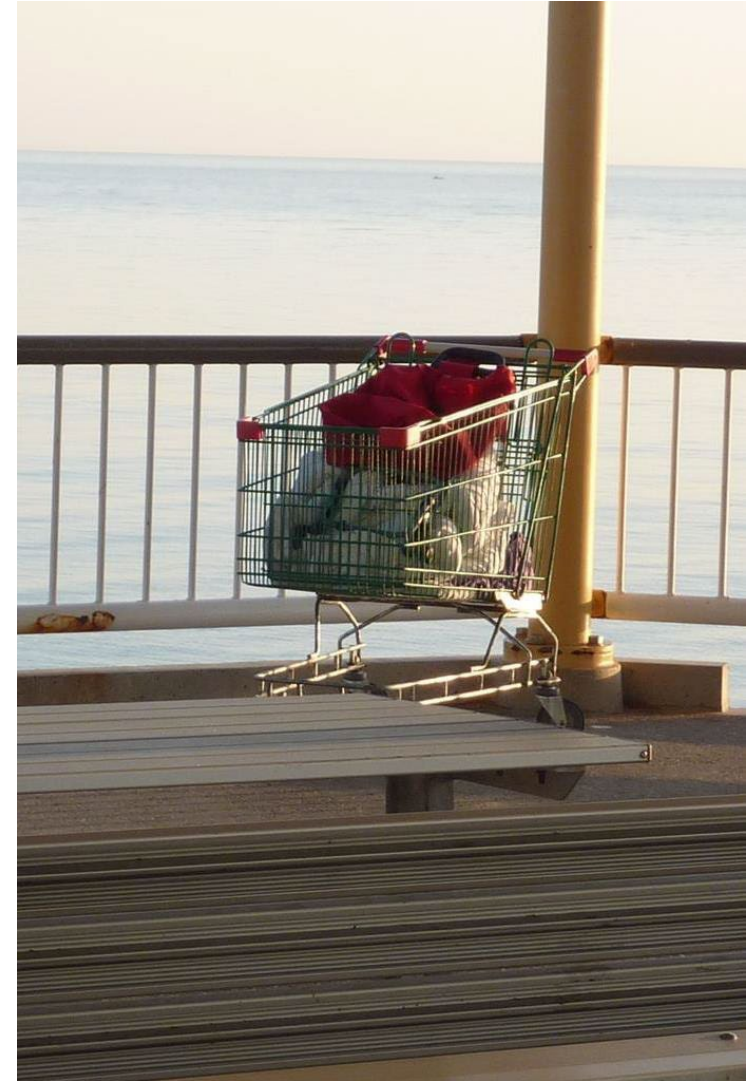
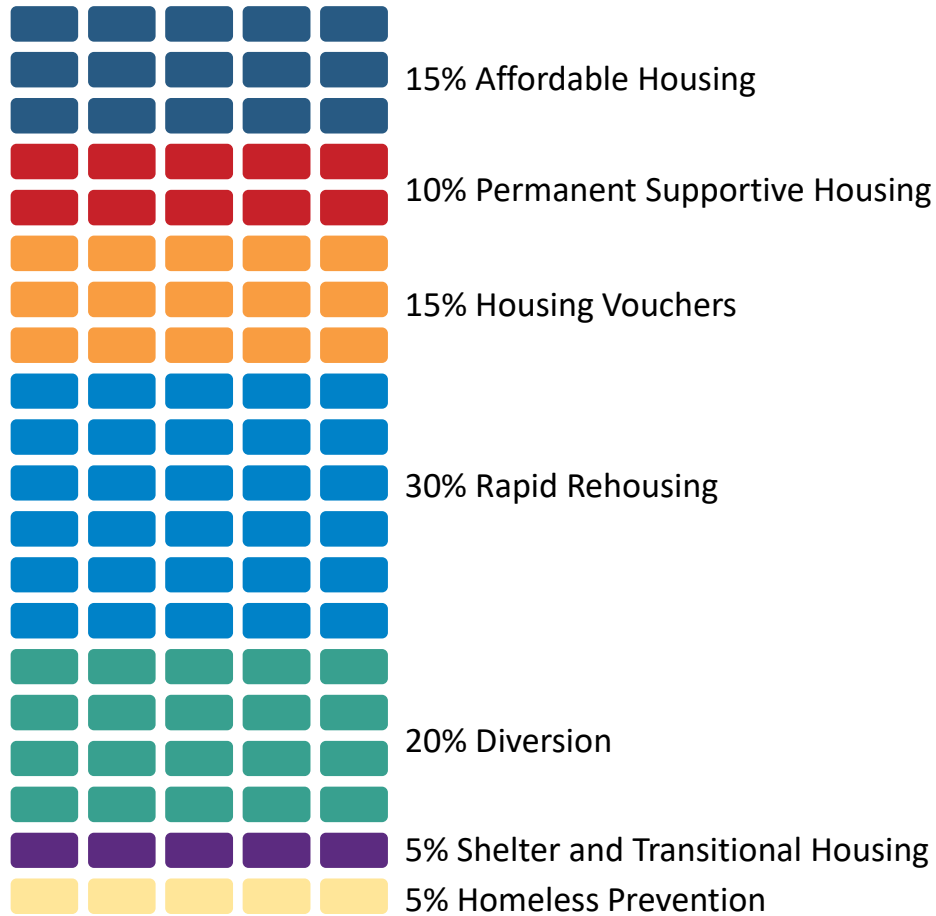
SIX GOALS

1. **Create a unified, regional system and response**
2. **Use DATA to ensure interventions are effective for all**
3. **Prevent homelessness**
4. **Ensure adjacent programs meet needs of homeless population**
5. **Meet immediate needs of those experiencing homelessness**
6. **Expand permanent housing**



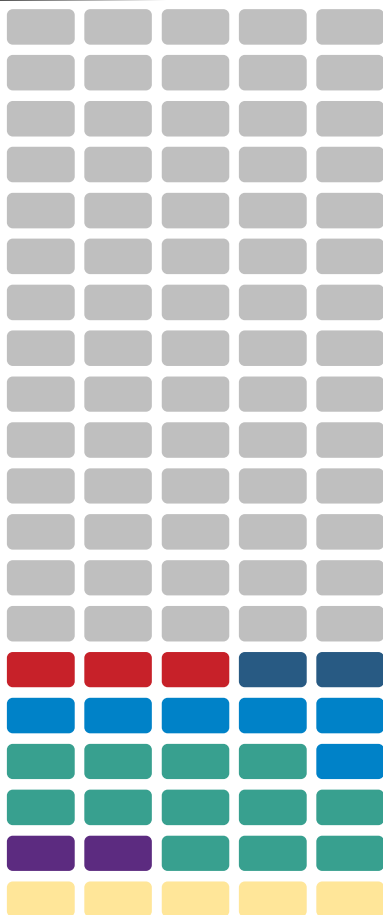


FUNCTIONAL ZERO



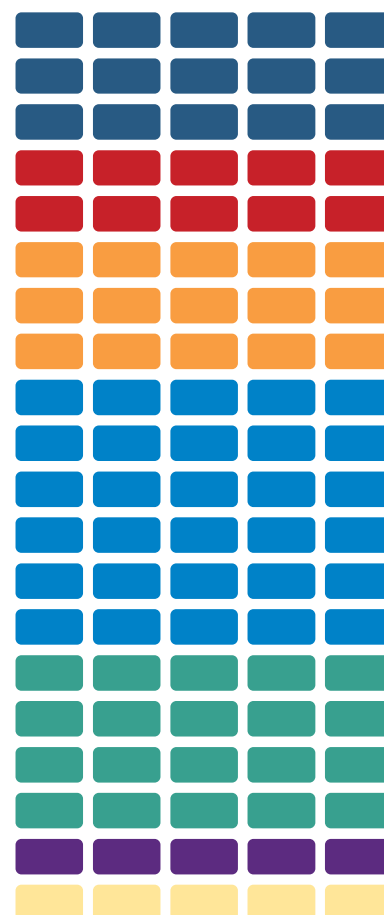


FUNCTIONAL ZERO



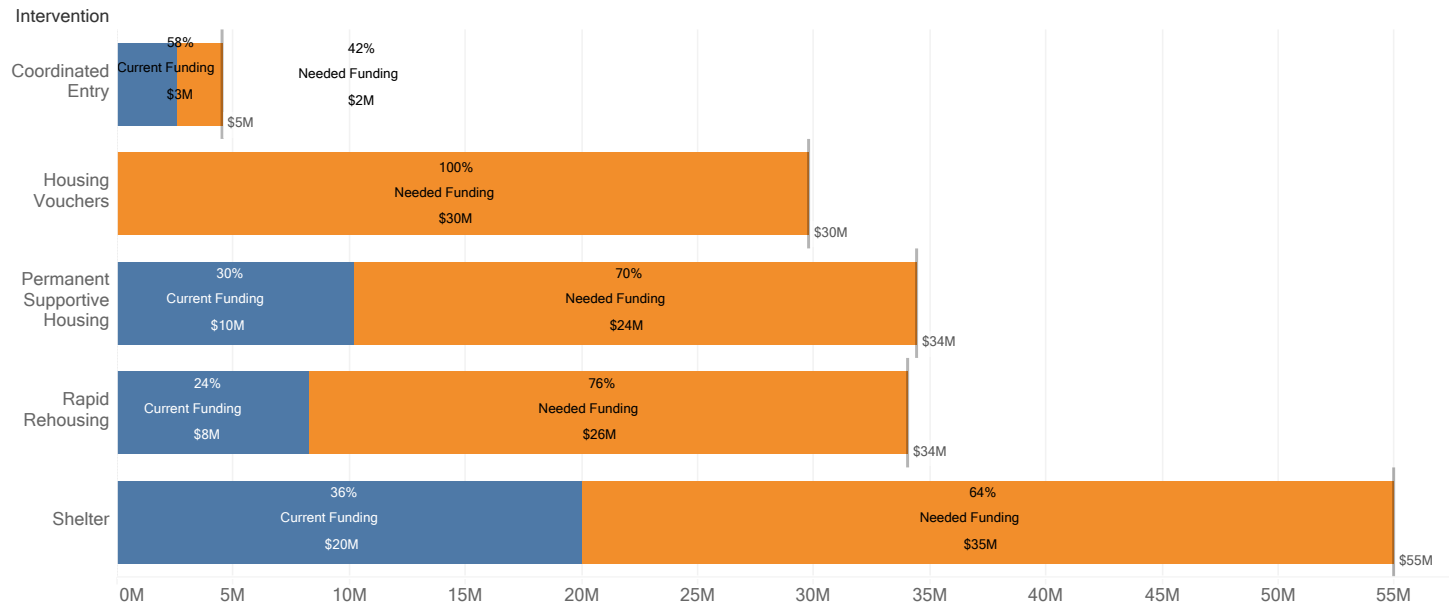
RECOMMENDATIONS

- 15% Affordable Housing
- 10% Permanent Supportive Housing
- 15% Housing Vouchers
- 30% Rapid Rehousing
- 20% Diversion
- 5% Shelter and Transitional Housing
- 5% Homeless Prevention



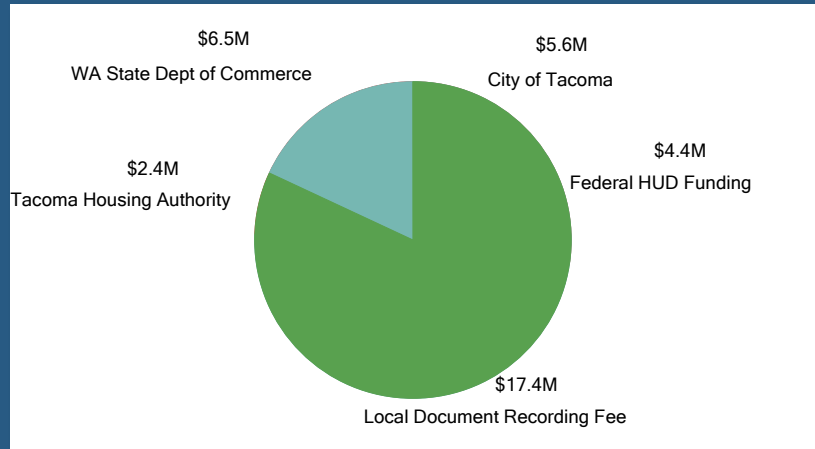
ANNUAL COSTS

Current and Needed Annual Operations Funding



RECURRING FUNDING NEEDS

Current Recurring Funding: \$36M



Additional Annual Funding Need: \$117M

Potential Recurring Sources:

- Federal
- State
- Local Government
- Philanthropic
- Business Community

CAPITAL FUNDING - ROUGH ESTIMATES

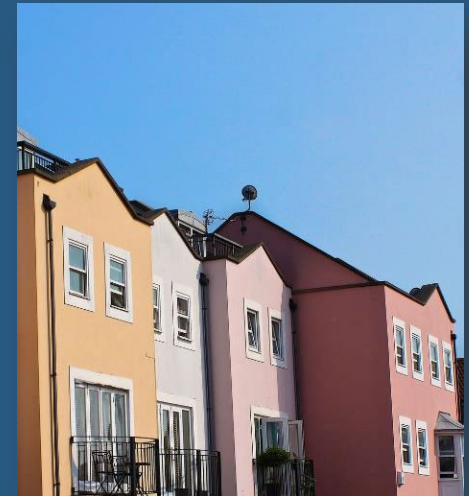
Shelter
~\$15M



Permanent
Supportive Housing
~\$400M



Affordable
Housing
(even more \$)



COST OFFSETS

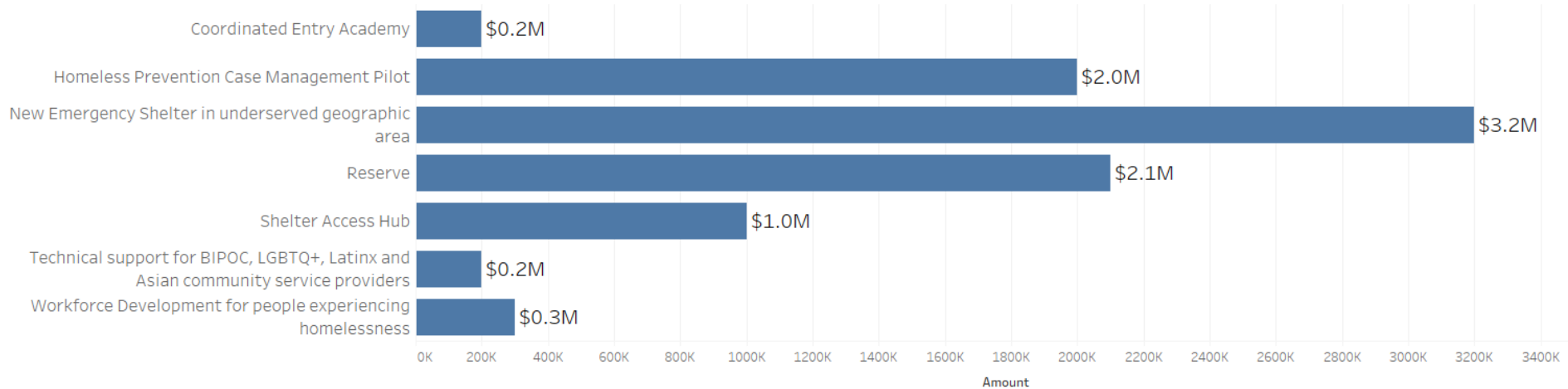
\$48 Million
per year

Conservative
estimate of adjacent
system costs savings
by reaching
Functional Zero

Indirect Costs Per Household of Not Addressing Homelessness	
Mainstream System Costs	
Healthcare	\$ 8,191
Law Enforcement & Criminal Justice	\$ 5,146
Social Services	\$ 1,123
Public Service	\$ 142
Opportunity Costs	
Tourism	\$ 1,756
Local Business	\$ 2,539
Education	\$ 207
Poverty Trap	\$ 2,534
12 month cost per household	\$ 21,638
1 month cost per household	\$ 1,803

PROPOSED INITIAL FUNDING

Proposed Uses for Initial \$9M Allocation to Implement Comprehensive Plan



NEXT STEPS

- Reach out to partners and jurisdictions to educate on plan.
- Develop implementation steps.
- Draft goals for funding strategy...then we will come back to speak to many of you!
 - Local jurisdiction contributions
 - Business role? Philanthropy?
- Implement steps to achieve functional zero in Pierce County.
 - Other partner supports/efforts





QUESTIONS?





SAFE PARKING PROGRAM

New Hope Resource Center
Executive Director Paula Anderson

Safe Parking-What is it?

- **The Safe Parking Program was created to provide individuals and families living in their vehicles a place to park that is safe and secure.**
- **It is one of the strategies to help end homelessness in Pierce County as described in the plan created by the Tacoma Pierce County Coalition to End Homelessness that was approved by the Pierce County Council.**



Where is Safe Parking located?

Typically, Safe Parking is located in church parking lots, although the recent PC draft Safe Parking ordinance is allowing 4 civic sites to participate.

Currently, we have 5 sites in operation; 1 in Gig Harbor, 2 in SE Tacoma, 1 on South Hill-Puyallup area and 1 in Spanaway. Most are located in unincorporated Pierce County areas. Combined, this gives us 34 Safe Parking “stalls”.



Why is Safe Parking needed?

Homelessness in our County is continuing to grow.

From increased rent and cost of living for families already living paycheck to paycheck, to fixed incomes that do not meet even half of monthly costs for seniors and the disabled, many in our community find themselves going homeless in record amounts.

We need many different solutions, and for those who are fortunate enough to have a vehicle, Safe Parking can temporarily meet their immediate needs for safe, secure parking, with the added bonus of on-going resources and compassion.

Safe Parking is considered Emergency Shelter

How does Safe Parking Work?

- **New Hope Resource Center provides:**

- Referral line for clients to call to start the process
- Screening of all potential clients, including background check
- Porta-potties (with regular weekly maintenance) hand-washing stations and garbage pick up.
- Light case management and resources
- Client guidelines/behavior expectations
- Rent of allotted spaces at a monthly rate
- Entry of clients into HMIS and CE
- Referrals to other services
- Memorandum of Understanding
- Assistance with meeting the requirements of PC Safe Parking Ordinance

- **What Hosting Sites provide (basics):**

- 3-15 parking stalls available for overnight use by clients
- Space for porta-potty and hand-washing station
- Site Coordinator(s)- greet new clients and provide a contact person for program
- Site information such as open hours, location of stores, gas stations close-by and any do's and don'ts specific to the site and surrounding area
- **Additional things that can be provided by Hosting sites:***
 - *Gas cards *cook tent with microwave, picnic bench and mini-fridge * food *clothing * dog/cat food *water *bus tickets *vehicle maintenance * friendship *compassion

What does Safe Parking Look Like?



What does Safe Parking Look Like?



What does Safe Parking Look Like?



Safe Parking is:

- Easily set up
- Co-managed between the Management Organization and the Hosting Site
- Flexible to meet the needs of the clients AND the Hosting Site
- Helps mitigate the growing numbers of homeless parking on the street and in unauthorized areas
- Is effective in moving people forward
- Gives churches and other entities a chance to build relationships and help people in need
- Is changing people's lives!

How you can help!

- Get your church or business involved in Safe Parking by becoming a Hosting Site for safe parkers. WE NEED MORE SAFE PARKING LOCATIONS AS OUR CURRENT SITES ARE OFTEN FULL.
- Purchase gas cards and donate them to the Safe Parking program.
- Provide vehicle maintenance and repair for those who need it, especially our elderly and disabled clients
- If your church cannot provide space, offer volunteers and/or donations to help the churches that are currently providing safe parking.

**This is a powerful way to
get involved with a proven
strategy to help those
experiencing
homelessness**

More Info about Safe Parking

◦ **REFERRAL LINE FOR CLIENTS 253-346-6482**

[Safe Parking - Tacoma Pierce County Coalition to End Homelessness \(pchomeless.org\)](http://pchomeless.org)

Email Paula Anderson ANDEPAA12@msn.com

Mike Yoder, ED for Associated Ministries

Check Point for the Community Quarterly Meeting:

- Review/update Mission/Vision for CQM
- What are topics you would like to learn more about in the future?
- How can we be even more effective to impact homelessness?

Closing Blessing

Thank you for coming!

See you next time on Thursday,
November 17th at Tacoma
Community House.

Contact: Valorie Crout
Chief Program Officer for
Associated Ministries at
valoriec@associatedministries.org
or 253-426-1508



Uniting people of faith to build stronger communities

901 South 13th Street
Tacoma, WA 98405

T: 253-383-3056

F: 253-383-2672

associatedministries.org