

Modul Q 64 In

MODUL Q 64

CEILING LUMINAIRE

Ultra-flat 0.4 in thick ceiling LED luminaire for direct mounting to the ceiling. Approx. 98% direct beam, wide beam.

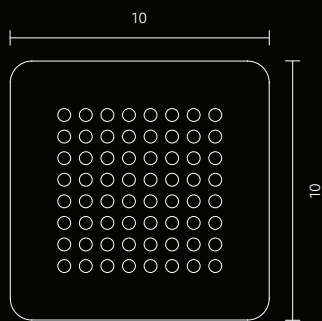
MODUL Q 64	2700 K	3000 K	4000 K
Ceiling luminaire for direct mounting	010-073	004-180	010-074

remote driver
mounts to 4" octagonal box

cut-out:
Ø 3 in × d 2 in



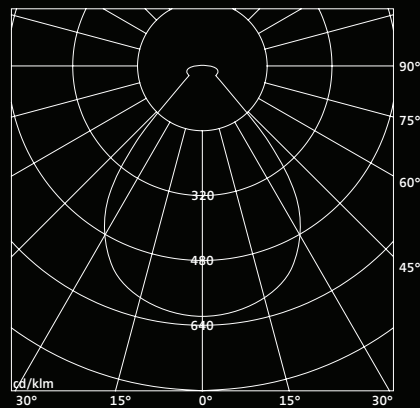
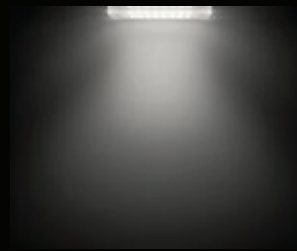
DIMENSIONS	10 × 10 × 0.4 in (direct mounting) 10 × 10 × 2 in (recessed mounting)
WEIGHT	2 lb
LIGHT TECHNOLOGY	LED technology 24 V DC 2700 K 11.5 W A++ CRI > 90 3000 K 10.9 W A++ CRI > 90 4000 K 10.5 W A++ CRI > 90
LUMINOUS FLUX	~1350 lm
LIGHT DISTRIBUTION	98% direct beam
DEGREE OF PROTECTION	IP20
GLARE CONTROL	X = 4H; Y = 8H S = 1.0; H = +0.3/-0.3 reflection factors: 70/50/20 UGR transversal: <19 UGR axial: <19



for direct mounting



for recessed mounting



C0-C180, C90-C270

See page 546 for further mounting information.

MODUL Q 64

CEILING LUMINAIRE WITH SURFACE-MOUNTED HOUSING

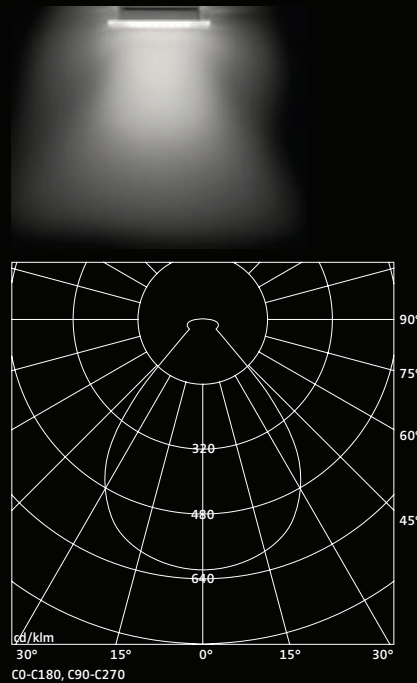
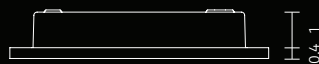
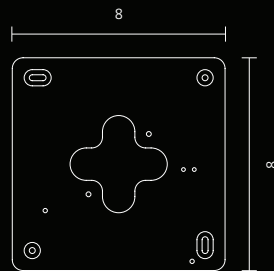
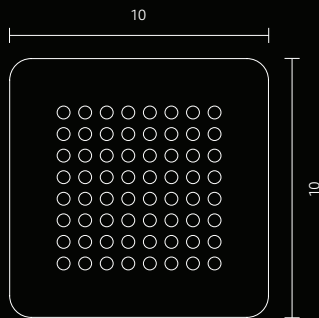
LED ceiling luminaire with plastic surface-mounted housing, brilliant white. Approx. 98% direct beam, wide beam.

MODUL Q 64	2700 K	3000 K	4000 K
Ceiling luminaire with surface-mounted housing 1 in			
integral driver	010-068	003-727	010-069
remote driver	010-070	003-728	010-072

mounts to 4" octagonal box



DIMENSIONS	10 × 10 × 2 in
WEIGHT	2 lb
LIGHT TECHNOLOGY	LED technology
	24 V DC
	2700 K 13.6 W A+ CRI > 90
	3000 K 12.9 W A+ CRI > 90
	4000 K 12.5 W A++ CRI > 90
LUMINOUS FLUX	~1350 lm
LIGHT DISTRIBUTION	95% direct beam
DEGREE OF PROTECTION	IP20
GLARE CONTROL	X = 4H; Y = 8H S = 1.0; H = +0.3/-0.2
	reflection factors: 70/50/20
	UGR transversal: <19
	UGR axial: <19



MODUL Q 64 IN

RECESSED CEILING LUMINAIRE

Recessed ceiling LED luminaire for virtually flush ceiling mounting. 100% direct beam, wide beam. The frame is available in 3 variations: brushed stainless steel, anodized silver or brilliant white. For assembly in suspended ceiling or concrete mounting box.

MODUL Q 64 IN	2700 K	3000 K	4000 K
Recessed ceiling-mounted luminaire for recessed mounting			
brushed stainless steel	010-078	004-873	010-079
anodized silver	010-080	004-875	010-081
brilliant white	010-082	004-876	010-083

remote driver

cut-out:

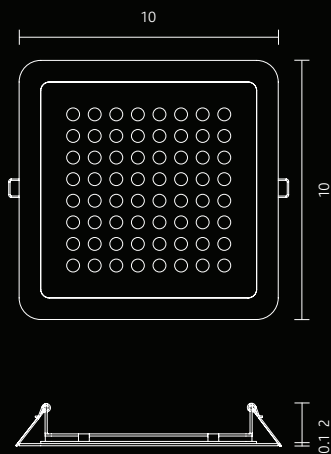
h 8 × w 8 × d 2 in

Accessories

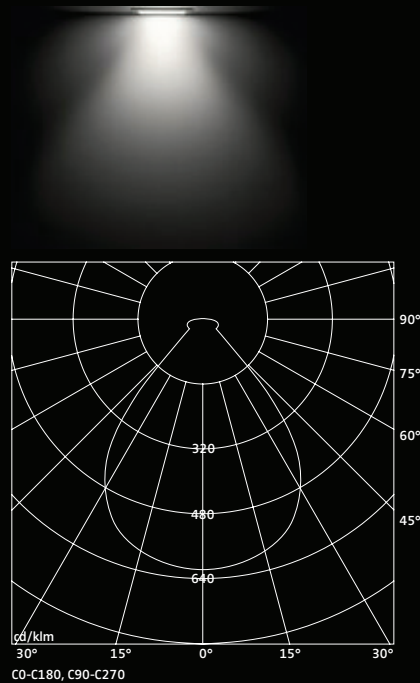
concrete mounting box	005-366	005-366	005-366
-----------------------	---------	---------	---------



DIMENSIONS	10 × 10 × 2 in
WEIGHT	2 lb
LIGHT TECHNOLOGY	LED technology
	24 V DC
	2700 K 11.5 W A++ CRI > 90
	3000 K 10.9 W A++ CRI > 90
	4000 K 10.5 W A++ CRI > 90
LUMINOUS FLUX	~1350 lm
LIGHT DISTRIBUTION	100% direct beam
DEGREE OF PROTECTION	IP20
GLARE CONTROL	X = 4H; Y = 8H S = 1.0; H = +0.3/-0.3
	reflection factors: 70/50/20
	UGR transversal: <19
	UGR axial: <19



See page 550 for further mounting information.



Lighting is about creating an environment that uses light as the main medium of expression. It means having one's work blend seamlessly with the architecture, often at the risk of not being seen. It's about giving definition to a space.