

# WEEKLY SUMMARY

January 18, 2019



**Picture 1:** Finished Sink and Accessories in the Early Childhood Development Room



**Picture 2:** Ceiling Tile in the Dental Assisting Lab



**Picture 3:** Lockers in the Early Childhood Development Locker Room

## DELAWARE AREA CAREER CENTER: SOUTH CAMPUS CONSOLIDATION OF FACILITIES

### Construction Activities

#### Completed

- Installation of Casework and Ceiling Tile in the Learning Commons
- Completion of Above-Ceiling Fire Protection, and Electrical Inspections in the LGIA
- Installation of Ceiling Tile in the Dental Assisting and Exercise Science Labs
- Installation of Doors/Hardware, and Soap/Paper Towel Dispensers in Early Childhood Development
- Installation of Plumbing Fixtures in the Dental Assisting and Exercise Science Labs

#### Ongoing

- Installation of Epoxy Tops in the Biology/Chemistry Labs
- Installation of Lockers and Vinyl Composition Tile in the Biology/Chemistry Labs and Learning Commons
- Installation of Soft Flooring and Toilet Partitions in the Dental Assisting and Exercise Science Labs

#### Upcoming

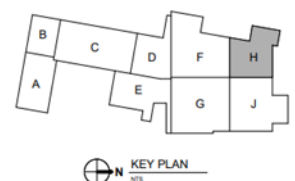
- Installation of Plumbing/Electrical Hookups to Casework in Cosmetology
- Installation of Ceiling Tile and Final Coat of Paint in LGIA

### Technology Update

- Area F: 85% of Devices Terminated
- Area G: 67% of Devices Terminated
- Area H: 90% of Devices Terminated
- Area J: 42% of Rough-In Complete

### Requests for Information

- RFI's to Date: 383
- Open RFI's: 5
- Urgent: 1



# WEEKLY SUMMARY

January 18, 2019



**Picture 4:** Doors Installed in the Early Childhood Development Room



**Picture 6:** Ceiling Tile in the General Science Prep Room



**Picture 5:** Showerhead and Grab Bars in the Exercise Science Shower Room



**Picture 7:** VCT and Casework in the General Science Classroom