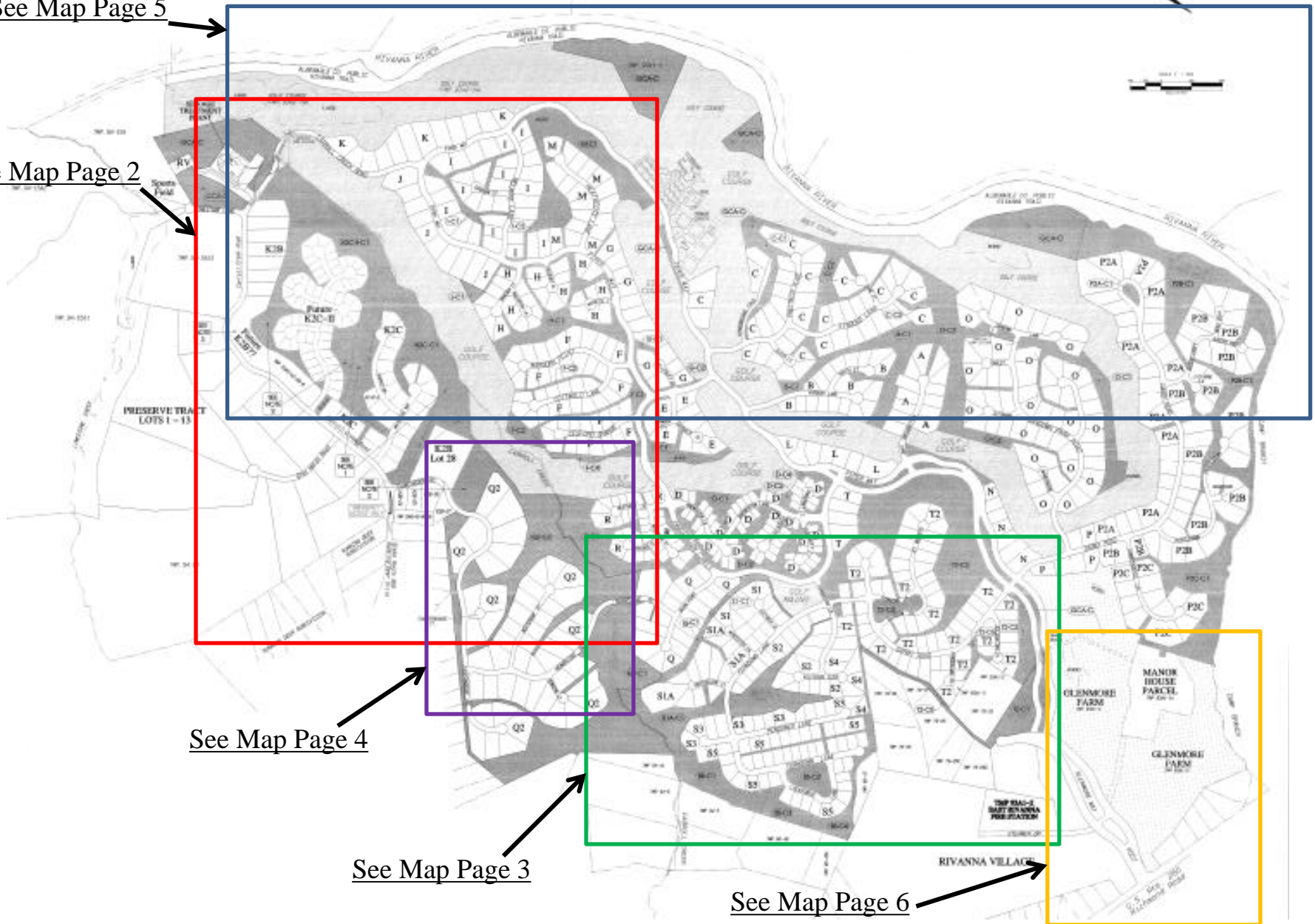
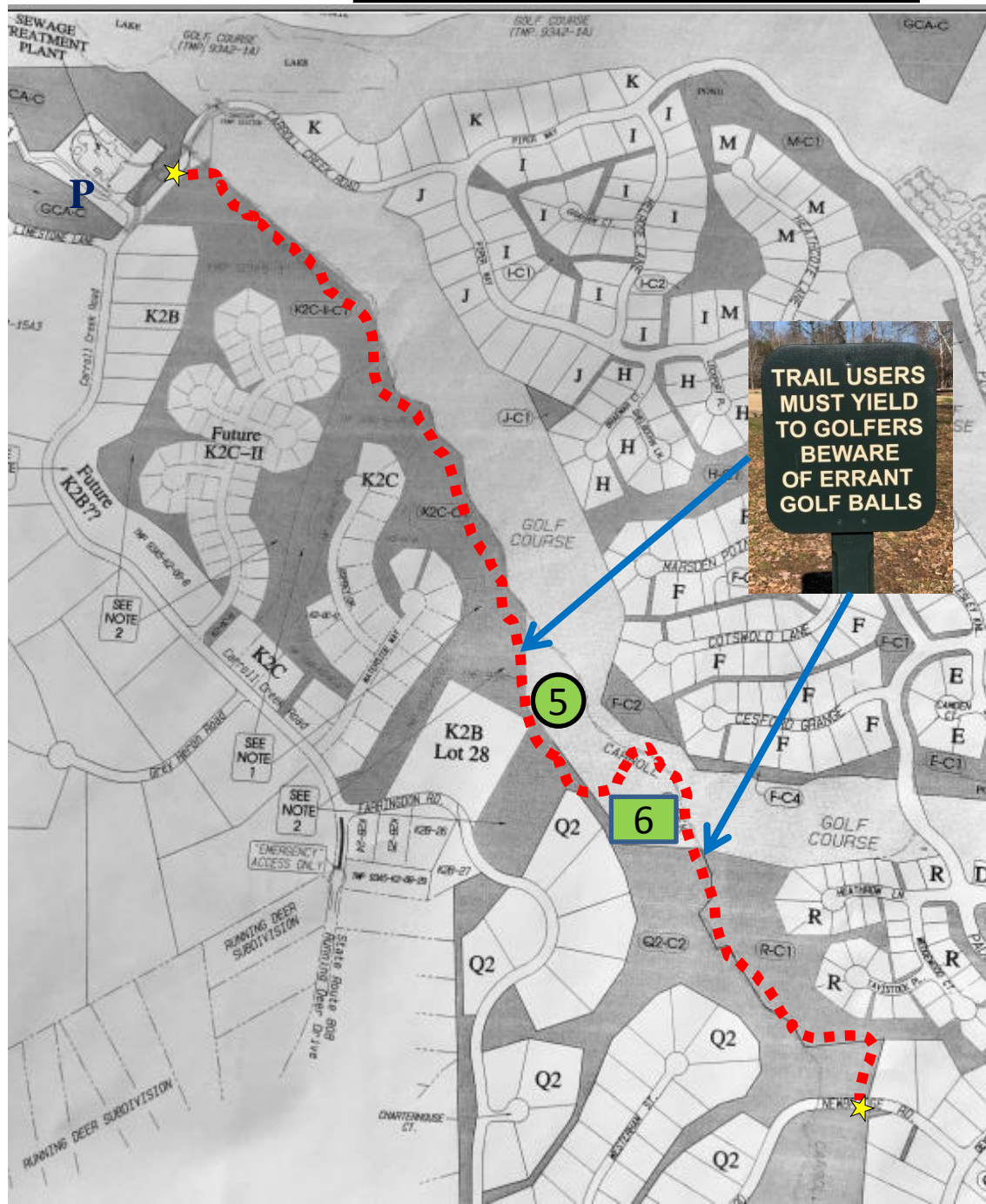




RIVANNA VILLAGE



Carroll Creek Nature Trail



The Carroll Creek Nature Trail begins on the east side of Carroll Creek Road approx 100 yards south of the pump houses. The trail head sign is at the end of the guard rail. The trail is white blazed. The trail descends to the bank of the creek. Follow the creek staying on the south side of the creek. Do not cross the creek. At 0.8 mile the trail emerges from the tree line and passes behind the 5th green of the Glenmore Country Club. Warning signs are posted. **Hikers must yield to golfers (motion and silence).** Be aware of errant golf balls. The trail then follows the cart path to just before reaching the 6th tee where the trail crosses a mowed path in a field.

Extreme caution is advised here as golfers cannot see hikers from the 6th tee immediately to the right and above. The trail then crosses Carroll Creek over the cart path bridge and moves sharply to the right in front of the 6th tee and now follows the west side of Carroll Creek. At 1.2 mile the trail emerges at Newbridge Road. Crossing Newbridge Road and the trail continues. Parking is available at the Sports Field

Trail
Head
★

Carroll Creek (cont'd) & Pendower Nature Trail

The continuation of the Carroll Creek Trail and The Pendower Trail is lengthy (approximately 1.5 mile) that takes you along the eastern edge of the Glenmore Community. The trail head is immediately across Newbridge Road and is the continuation of the Carroll Creek Trail. The trail descends to the right from the road at the end of a guard rail and follows the west side of Carroll Creek. In approximately 0.5 mile the trail swings sharply to the left and enters a mowed field. The Pendower spur to the left reaches Lockerbie Pond. A sharp turn to the right follows the mowed field. At the end of the field at 0.75 mile the trail swings up a gentle slope to the left and follows a fence for approx 0.2 miles where the trail turns sharply to the right and behind the Scottish Homes. In approx 0.2 mile the trail passes through a locked gate and enters Ashton Rd. Follow Ashton Rd (an active road) to the end of the trail at the end of Glenmore Way. Parking is available at the end of Glenmore Way.



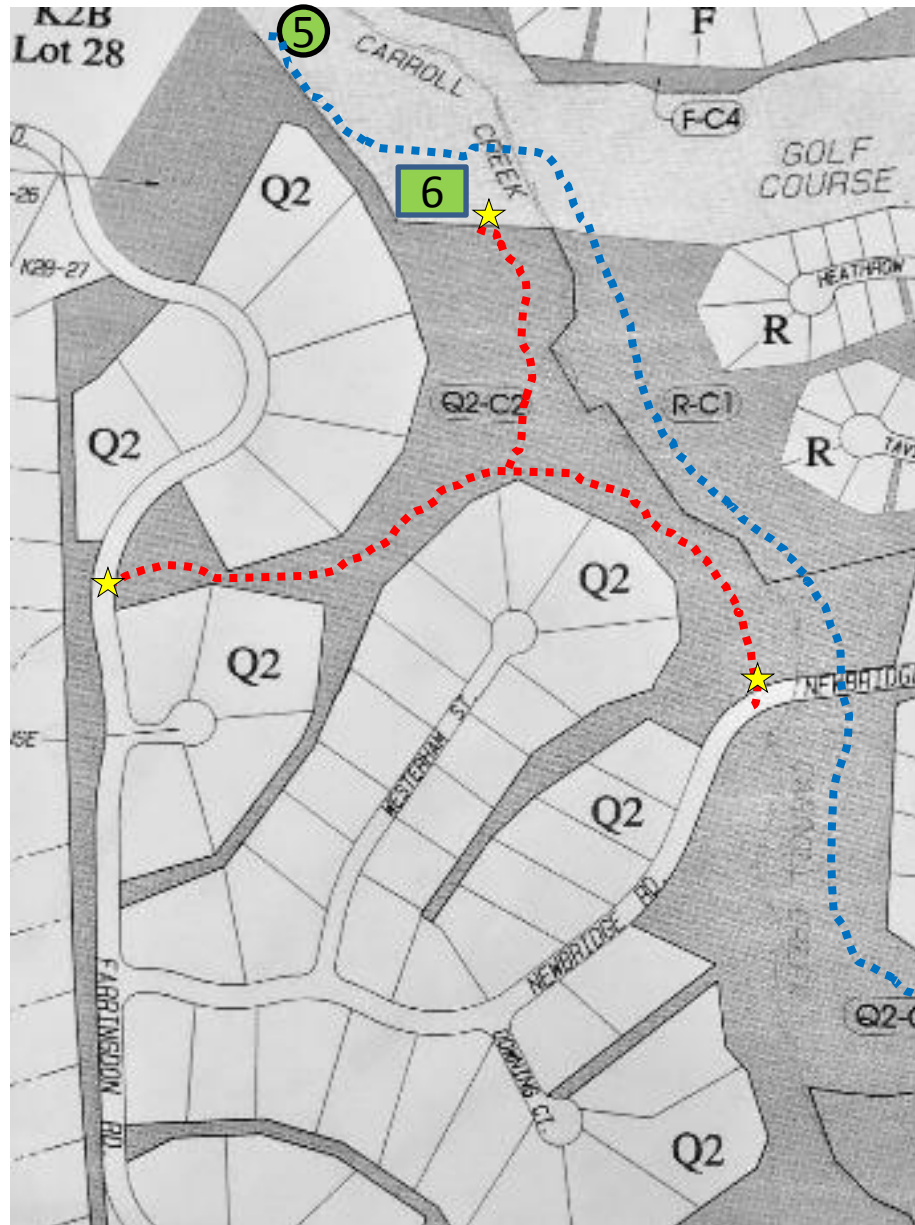
★ Trail Head

Bluebird Nature Trail

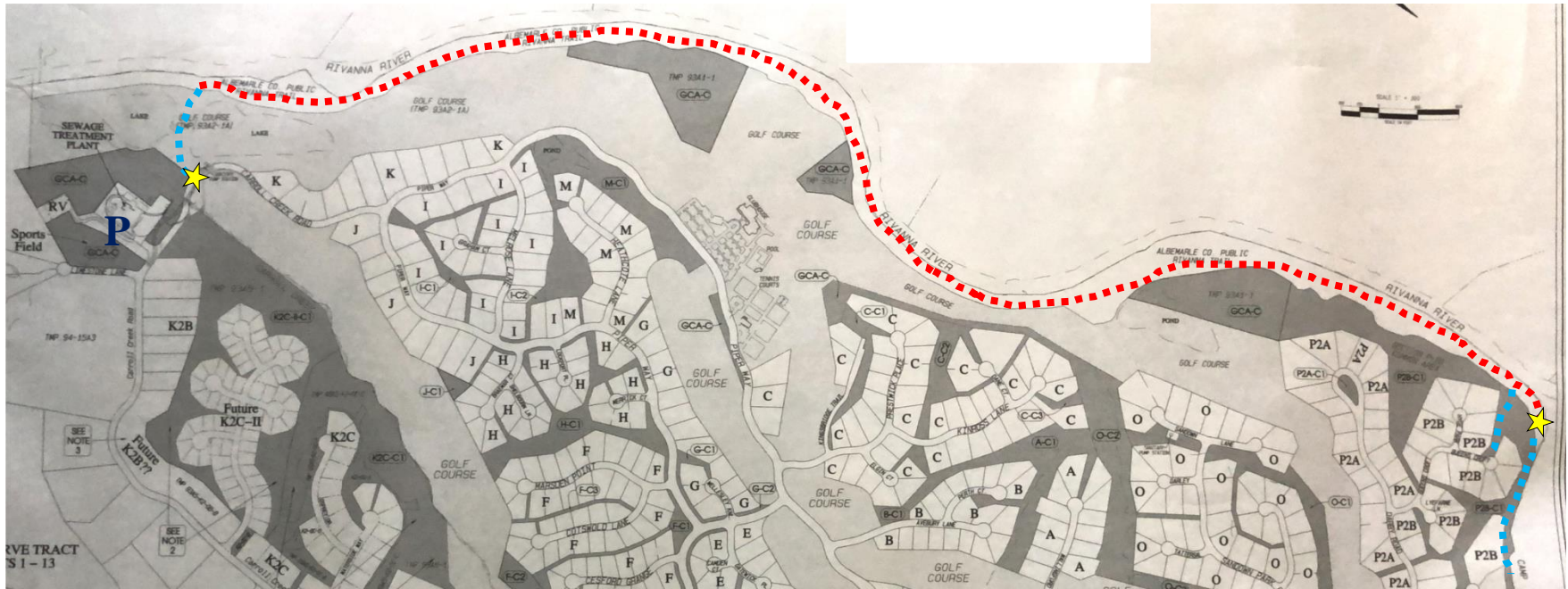
The Bluebird Nature Trail is a short but beautiful and quiet trail. The trail head is on Newbridge Road approximately 100 feet south of the Carroll Creek trail head and on the opposite side of Carroll Creek. The trail descends steeply and then is mostly flat for its entire short course, following the south side of Carroll Creek. At approximately 0.2 mile the trail forks. The left fork climbs gently for approximately 500' where again there is a fork. Follow the left fork for the Bluebird Trail. Do not take the right fork at this location as it is an Albemarle County Service Authority easement that crosses private property parcels and is not a trail. Following the left fork will bring you to Farrington Road in approximately 500'.

Additionally at the first fork, take the right fork to a short spur that continues to follow Carroll Creek where the trail takes you to the edge of the 6th tee on the Glenmore Country Club Golf Course where the trail currently ends. Do not cross onto the golf course.

★ Trail
Head



Rivanna River Greenway—Rivanna River Trail



The Rivanna River Greenway is an Albemarle County initiative that will establish a public pathway along the Rivanna River for the entire length of the County. The Greenway for its entire length is Albemarle County property. The Rivanna River Trail is currently implemented in segments and is open to the public. The trail is maintained by Albemarle County. The Glenmore Community Association and the Glenmore Country Club are responsible for security along the trail.

The trailhead starts on Carroll Creek Road at the Albemarle County Service Authority pump houses. A chain crosses the entrance to Glenmore Country Club property. Glenmore residents have an easement of use to cross the Country Club property between two ponds near the 2nd hole green. This short spur is about a 500' long dirt road where it joins the eastern end of the Rivanna River Trail. The trail is grassy and level for its entire 2 mile length. To the north is the Rivanna River and to the south are properties owned by the Glenmore Community Association and the Glenmore Country Club. The trail passes the Queenscroft Spur Trail Head and joins the Camp Branch Trail. Parking is available at the Sports Field.

Future developments are planned by the county to extend the Greenway and trail from both the east and west ends of the current trail.



Trail
Head

Glenmore Farms Trails

Trails in the Glenmore Farms area are entirely outside of fenced fields/paddock areas and are for the use of hikers, walkers, mountain bikes and horses and are shown on this map. Also note that in this general area there are many trail-like paths that appear to be trails but are primarily sewer easement paths on GCA private properties. Please stay only on the trails shown on this map.

There are two primary loop trails shown.

1--Upper Fields (red). The trail starts approx 100 yards from VA Rte 250. Limited parking is available on the shoulder of the Glenmore Way. The trail follows the outside of the fence line. In approx 0.2 mile the trail swings sharply to the right remaining outside the fence and in a short distance swings sharply left and uphill outside the fence. The trail passes the upper riding ring and then to the access road to the Manor House. The access road is GCA-owned with an access easement for the Manor House owner and their guests. Follow the access road back to Glenmore Way. **DO NOT ENTER THE MANOR HOUSE PROPERTY.**

2—Perimeter (Red and Blue). At the 0.2 junction of the Upper Fields Trail, the Perimeter Trail swings sharply right still following the outside of the fences and at approx 0.3 miles the trail enters a wooded area and the trail now follows the outside of the Manor House property. At approx 0.5 mile the trail turns sharply left to follow the rear boundary of the Manor House. From this location a short spur (green) leads to Camp Branch where Glenmore property ceases **DO NOT CROSS CAMP BRANCH ONTO PRIVATE PROPERTIES.** There is no trail beyond this point. Note that GCA property is very narrow in the area behind the Manor House. The trail continues until it joins the manor House access road extension again following the Manor House boundary and returning to the access road and Glenmore Way.

