



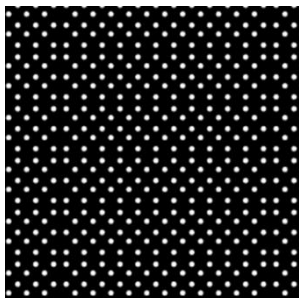
Dual Color Film

There are many options and colors for night visibility such as white, green, red and yellow, but if you want one color during the day and another color during the night, then dual color vinyl is the way to go. A sign can really pop at night with vinyl like this. You can incorporate this vinyl into the design of the sign or use it on the whole sign.

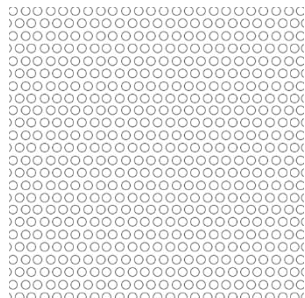
The color is achieved when a background color/image glows through the perforations in the dual color film. From a typical viewing distance for large format graphics, viewers will notice little or no perforation pattern.

Dual Color Vinyl

Dual Color Vinyl allows the option of night visibility while keeping the sign the same color during the day. The two colors of dual color vinyl are Arlon 5590-122 Black and Arlon 5590-120 White. Series 5590, is a 6-mil Dual Color Film that allows internally illuminated signs to be seen as one color during the day, While at night either white or a second color. This film is ideal for internally illuminated signage and channel lettering requiring maximum visibility during day and night viewing.



Arlon 5590-122 Black



Arlon 5590-120 White

Features:

- 7-year durability
- Excellent color consistency – not directionally sensitive
- Superior release and weedability
- Ideal for thermoformed designs
- Adhesive formulated for large-format lamination, pan forming and embossed images
- Designed for internally illuminated signage, displays and where light transmission is important

For more information about [dual color vinyl](#) please don't hesitate to contact us at 800-544-6381.