



21st Annual



MICHIGAN SOCIETY OF ECHOCARDIOGRAPHY

Echo in the Slopes

W E E K E N D S Y M P O S I U M

May 16 & 17, 2020 – Boyne Mountain

Jointly provided by:

Beaumont

Hotel reservations: [Click here](#)
Conference registration: [Click here](#)

CME Accreditation and Credit Designation

This activity has been planned and implemented in accordance with the accreditation requirements and policies of the Accreditation Council for Continuing Medical Education through the joint providership of Beaumont Health and the Michigan Society of Echocardiography. Beaumont Health is accredited by the ACCME to provide continuing medical education for physicians.

Beaumont Health designates this live activity for a maximum of 9.0 *AMA PRA Category 1 Credit(s)*™. Physicians should claim only the credit commensurate with the extent of their participation in the activity.

PROGRAM

Saturday, May 16

8 to 8:15 a.m.

Welcome & Introductions

Luis Afonso, MD

8:15 to 9 a.m.

Keynote Address

Valve-Ventricular Interactions

John Gorcsan, III, MD

9 to 10:25 a.m.

Nuts & Bolts:

- A. Many Faces of Severe Aortic Stenosis
Shalini Modi, MD
- B. Grading Aortic Regurgitation
Felix Rogers, DO
- C. Prosthetic Mitral Valve Assessment
David Langholz, MD
- D. Quantifying Tricuspid/Pulmonic Regurgitation
Shaun Cardozo, MD

10:25 to 10:50 a.m.

Prosthetic Valve Endocarditis

Luis Afonso, MD

10:50 to 11:05 a.m.

AM Speaker Panel

Q & A/Open Forum

11:05 to 11:35 a.m.

BREAK/EXHIBITS

11:35 to Noon

Strain Imaging: Theory to Practice

Gerald Cohen, MD

12 to 1 p.m.

Rapid Fire Case Session (15 min. each)

Karen Zimmerman, BS, ACS, RDCS, RVT

Gerald Cohen, MD

Luis Afonso, MD

Karthikeyan Ananthasubramaniam, MD

6 to 7 p.m.

Reception and Exhibits

7 to 9 p.m.

Echo Jeopardy

John Gorcsan, III, MD

Learning Objectives

1. Enhance the timely recognition of pathophysiology of valve disorders and their implications on ventricular performance.
2. Recognize caveats and pitfalls of the measurements used to assess native and prosthetic valve stenosis and regurgitation.
3. Discuss key role of various imaging modalities in the early detection of infiltrative cardiomyopathies and review emerging treatment options.
4. Instruct learners on the best techniques for early and accurate diagnosis of prosthetic valve infection.
5. Describe the spectrum of common adult congenital heart diseases and detail the echocardiographic approach to the identification of these lesions
6. Recognize the critical and expanding periprocedural role of echocardiography in patients undergoing structural interventional procedures

Sunday, May 17

7:55 to 8 a.m.

Announcements

Luis Afonso, MD

8 to 8:20 a.m.

Cardiac Amyloidosis: 2020 Update

Karthikeyan Ananthasubramaniam, MD

8:20 to 8:40 a.m.

Adult Congenital HD: What every echocardiographer and sonographer should know

Chenni Sriram, MD

8:40 to 9 a.m.

Echo-Doppler/Multimodality Assessment of Cardiac Constriction

Jeffrey Decker, MD

9 to 9:20 a.m.

Echo for Pulmonary Embolism and Approach to Pulmonary Hypertension

Nicole Bhawe, MD

9:20 to 9:30 a.m.

Q&A/Open Forum

9:30 to 10 a.m.

BREAK/EXHIBITS

10 to 10:20 a.m.

Saline Contrast Echocardiography

Shaun Cardozo, MD

10:20 to 11:05 a.m.

MitraClip: Expanding Horizons (COAPT) & Watchman: Pre and Post Imaging TAVR: Post TAVR Imaging and Complications

Elvis Cami, MD

Karen Zimmerman, BS, ACS, RDCS, RVT

11:05 to 11:15 a.m.

Q&A/Open Forum

FACULTY

Luis Afonso, MD

President Michigan Society of Echocardiography
Director, Echocardiography
Director, Cardiovascular Fellowship Program
Detroit Medical Center
Professor, Medicine
Wayne State University

Karthikeyan Ananthasubramaniam, MD

Director, Nuclear Cardiology /Cardiac PET
Program Director, Advanced Cardiac Imaging
Fellowship
Co-Director, Adult Congenital Heart Program
Henry Ford Hospital, Detroit
Senior Staff Cardiologist, Henry Ford Hospital, West
Bloomfield
Professor, Medicine
Wayne State University

Nicole Bhawe, MD

Clinical Assistant Professor
Department of Internal Medicine, Division of
Cardiovascular Disease
University of Michigan

Elvis Cami, MD

Director, Cardiac MRI - Beaumont, Royal Oak
Director, Structural Heart Imaging - Beaumont, Royal
Oak

Shaun Cardozo, MD

Division of Cardiology, Detroit Medical Center
Attending Physician, Wayne State University Physician
Group, Division of Cardiology
Assistant Professor, Medicine
Wayne State University

Gerald Cohen, MD

Director, Non-Invasive Cardiology, Interventional
Echocardiography, and Cardiac Rehabilitation
Ascension St. John Hospital
Clinical Professor, Medicine
Wayne State University

Jeffrey Decker, MD

Section Chief, Clinical Cardiology
Frederik Meijer Heart and Vascular Institute/Spectrum
Health
Assistant Clinical Professor, Medicine
Michigan State University College of Human Medicine

David Forst, MD,

Treasurer, Michigan Society of Echocardiography;
Medical Staff President, Beaumont Hospital, Troy;
Professor, Internal Medicine, Oakland University
William Beaumont School of Medicine

John Gorcsan, III, MD

Director, Clinical Research
Professor, Medicine
Washington University School of Medicine

David Langholz, MD

Medical Director, Richard and Helen DeVos Cardiac
Diagnostic Unit
Co-Chair, Cardiovascular Imaging
Frederick Meijer Heart and Vascular Institute
Spectrum Health
Clinical Professor
MSU School of Medicine

Shalini Modi, MD

Service Chief Cardiology 7 Non Invasive Director
Henry Ford Hospital, West Bloomfield
Clinical Assistant Professor,
Wayne State University

Felix Rogers, DO

Henry Ford Wyandotte Downriver Cardiology
Clinical Professor, Internal Medicine
Michigan State University College of Osteopathic
Medicine

Chenni Sriram, MD

Associate in Pediatric Cardiology, Department of
Pediatrics
Carman and Adams Department of Pediatrics,
Children's Hospital of Michigan
Assistant Professor, Pediatrics
Wayne State University and Central Michigan
University

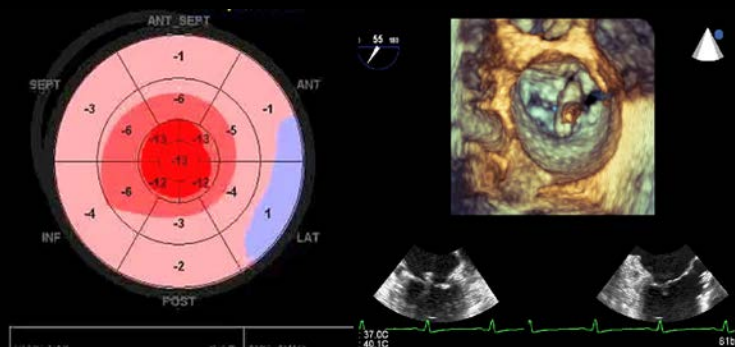
Karen Zimmerman, BS, ACS, RDCS, RVT

Editor-in-Chief: CASE: Cardiovascular Imaging Case
Reports
Clinical Quality Facilitator
Henry Ford Health System

Planning Committee:

Luis Afonso, MD
Karthikeyan Ananthasubramaniam, MD
David Forst, MD
Shalini Modi, MD

We Look Forward to Welcoming the Following Exhibitors



Ackea Therapeutics
Alnylam Pharmaceuticals
Amgen
Astellas
Boston Scientific
Bracco Diagnostics
Edwards Lifesciences
GE Healthcare
Lantheus Medical Imaging
Pfizer Rare Disease
Philips Healthcare
Siemens Healthineers