

Application for the 2020 Cooperative Workshop Series for Women & LGBTQ
at the Community Healing and Trauma Prevention Center
MLK Center for Public Health • 11833 Wilmington Ave • Los Angeles, CA 90059
Saturdays • February - April, 2020 • 2 - 5pm

Name: _____

Address: _____

City _____ ST _____ ZIP _____

E-mail: _____ Ph: _____

☐ I want to learn more about worker cooperatives.

☐ I support the values of equality, democracy, self-reliance, equity, solidarity and self-help.

My skills and work experience include: _____

(Optional. Attach an extra sheet if needed.)

☐ I have business ideas I want to explore as a possible as a for profit cooperative.

What kind of business? _____

☐ I like the idea of working and/or developing a democratically run business.

☐ I have been incarcerated.

☐ I have had trouble finding work because of my criminal record.

☐ I have had trouble finding work because _____

☐ I have a loved one inside ___ prison ___ jail. This person is my _____
 (son, daughter, partner, husband etc.)

☐ I am available to attend the full workshop series (ten sessions) on Saturdays,
 2- 5pm starting between February - April 2020. (Exact dates to be announced)

☐ I have questions. Please contact me to discuss. Call me at _____

Please email your application to msutton@collectiveremake.com
 or call Mary Sutton • 310.709.8602

COLLECTIVE REMAKE



Art, Business, Care, Education, Jobs, News, People, and Recycling for Sustainability

What is a Worker Cooperative?

Sign up for Our Cooperative Education and Development Workshops

Collective REMAKE supports the creation of worker owned businesses and other kinds of cooperatives with individuals who have been incarcerated and others who are discriminated against in the job market. Cooperative businesses are for profit businesses that are owned and run by the people that work there.

Cooperatives are real solutions for people coming home from prison or jail. Be an owner of the business and participate in a democratic workplace, a healthy supportive environment, and purposeful work that is beneficial to the individual, their loved ones, and the surrounding community.

Workshop participants will learn about the cooperative principles and values, the history of cooperative businesses in diverse communities, democratic decision-making, the state of the current economy, Just Transition, and the business of starting a cooperative. The development of cooperative business ideas will be supported beyond the workshops with administrative, business, legal consultation, as well as emotional support.



Cooperative Values

equality
 democracy self-reliance
equity
 solidarity
self-help

Collective REMAKE's Cooperative Education & Development Workshop Series

An Introduction to
Cooperatives; the Cooperative
Principles & Values

History of Cooperatives in
Diverse Communities

Framing Goals for a
Sustainable Economy through
a "Just Transition"

Envision a Cooperative
Business to Benefit Your Community

Practicing Democracy
What it Means to be Part of a
Sustainable Cooperative Business?

The Business of Starting
a Worker Cooperative

Legal Aspects of Starting a
Cooperative Business

Investment Strategies
& Time-Banking

Working Session
Develop Your Cooperative
Business Idea

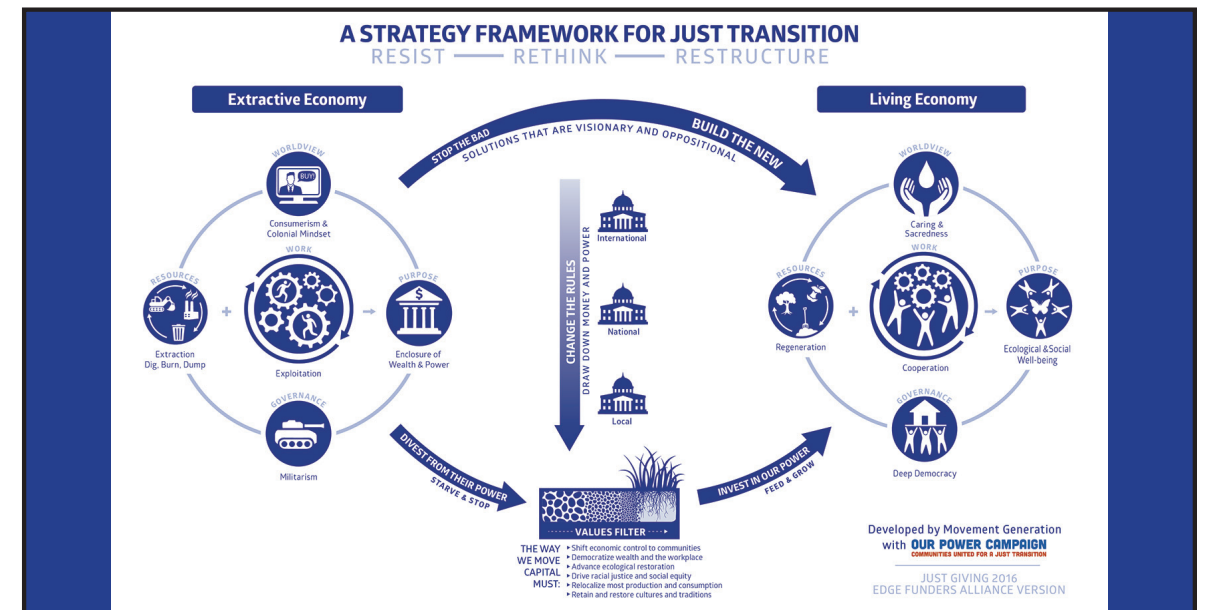
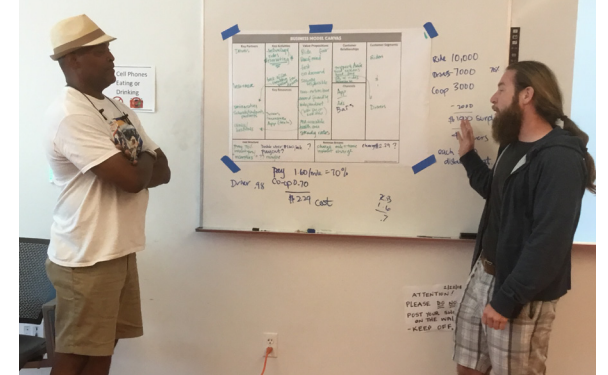
Visiting Cooperatives
in Los Angeles
(A Field Trip)



Collective REMAKE engages dozens of community partners who provide facilitation, technical training, administrative support, legal consultation, business planning, financial literacy, and other expertise. Some of our community partners include: Arroyo S.E.C.O Network of Time Banks, Collective Avenue Coffee, Coop LA, LA Coop LAB, Los Angeles Union Cooperative Initiative (LUCI), Movement Generation: Justice and Ecology Project, Oakland, Solidarity Research Center, Semillas Cooperative, the Sustainable Law Group and others.

Collective REMAKE works to develop cooperatives, as a strategy to create sustainable work opportunities and ownership for people returning home from prison. Cooperative businesses create work with dignity, support the needs of the community, and build economic options for future generations.

For more information contact
Mary Sutton • 310.709.8602
msutton@collectiveremake.com



<http://movementgeneration.org/movement-generation-just-transition-framework-resources/>