



# SIENA RESEARCH INSTITUTE

SIENA COLLEGE, LOUDONVILLE, NY

[www.siena.edu/scri](http://www.siena.edu/scri)

For Immediate Release:

Sunday, November 4, 2018

Contact:

Steven Greenberg, 518-469-9858

Crosstabs; website/Twitter:

[www.Siena.edu/SCRI/SNY](http://www.Siena.edu/SCRI/SNY)

@SienaResearch

## Siena College Poll of Likely Voters:

### **Cuomo vs. Molinaro Tightens as Republicans ‘Come Home’ Cuomo Lead is Now 13 Points, Down from 22 Last Month**

**Cuomo Favorability Under Water; Lowest in Eight Years as Governor**

***DiNapoli Leads by 37 Points; Gillibrand Leads by 23 Points;  
James Lead Over Wofford is 12 Points, 49-37 Percent***

Loudonville, NY Incumbent Democrat Andrew Cuomo’s lead over Republican Marc Molinaro, the Dutchess County Executive, narrowed from 22 points last month to 13 points this month. Cuomo leads 49-36 percent, down from 50-28 percent in October. Minor party candidates are supported by seven percent of voters, with seven percent still undecided, according to a new Siena College poll of likely New York State voters released today.

Senator Kirsten Gillibrand holds a 58-35 percent lead over Chele Chiavacci Farley, down from 61-29 percent in October. State Comptroller Tom DiNapoli leads Republican Jonathan Trichter 62-25 percent, up from 58-26 percent. The race for Attorney General has Democrat Tish James, New York City Public Advocate, leading Republican Keith Wofford 49-37 percent; it was 50-36 percent last month. Farley, Trichter and Wofford are all first-time candidates.

“Days before voters go to the polls, Molinaro has narrowed Cuomo’s lead. Republicans are ‘coming home’ to support their nominee much stronger than last month, although Cuomo continues to do better with Democrats than Molinaro does with

The Race for Governor of New York						
	Cuomo	Molinaro	Sharpe	Hawkins	Miner	DK
<b>Likely Voters</b>	<b>49%</b>	<b>36%</b>	<b>3%</b>	<b>2%</b>	<b>2%</b>	<b>7%</b>
Democrats	82%	8%	3%	2%	2%	3%
Republicans	12%	74%	2%	2%	1%	8%
Independents/Other	34%	41%	6%	3%	5%	11%
New York City	77%	14%	2%	2%	0%	4%
Downstate Suburbs	44%	41%	2%	3%	2%	8%
Upstate	36%	46%	5%	2%	3%	9%
Men	41%	45%	3%	3%	1%	7%
Women	56%	28%	3%	2%	3%	7%
White	45%	40%	4%	2%	2%	7%
Black	84%	7%	0%	1%	0%	7%
Latino	59%	27%	1%	3%	3%	7%
<b>Siena College Poll – November 4, 2018</b>						

Republicans. Independents have flipped, giving Molinaro a seven-point lead after favoring Cuomo by 10 points last month,” said Siena College pollster Steven Greenberg. “Cuomo’s huge lead in New York City more than cushions his narrow three-point lead in the downstate suburbs, and upstate, where Molinaro leads by 10 points.”

“Women continue to favor Cuomo two-to-one, however men now tilt toward Molinaro after supporting Cuomo by 12 points last month,” Greenberg said. “While Cuomo largely held his base – Democrats, New York City voters, women, black, Jewish, and younger voters – Molinaro picked up with Republican and independent suburban and upstate men.

“Three third-party candidates divide support from seven percent of voters. Last month, before Cynthia Nixon left the race, the third-party candidates attracted 14 percent, with the lion’s share going to Nixon,” Greenberg said.

“For the first time since he’s been governor, more voters now view Cuomo unfavorably, 49 percent, than view him favorably, 45 percent, down from 50-46 percent last month. While Democrats and New York City voters overwhelmingly view him favorably, Republicans, independents and upstate voters overwhelmingly view him unfavorably,” Greenberg said. “Molinaro continues to be largely unknown to nearly half the electorate, with a 29-25 percent favorability rating, compared to 24-20 percent last month.

“Voters are poised to give Cuomo a third-term. The question appears to be by what margin? Will Democrats and New York City voters turnout in bigger numbers than they have in recent midterms? If so, Cuomo has the chance to run up the score. If not, or if Republican enthusiasm matches increased Democratic enthusiasm – particularly in upstate and the suburbs where there are hotly contested House and State Senate races – then the final results will likely look similar to four years ago,” Greenberg said.

<b>New York’s Statewide Races</b>				
	<b>Democrat</b>	<b>Republican</b>	<b>Undecided</b>	<b>MARGIN</b>
<b>State Comptroller</b>	<b>62%</b>	<b>25%</b>	<b>13%</b>	<b>Dem + 37</b>
<b>U.S. Senator</b>	<b>58%</b>	<b>35%</b>	<b>8%</b>	<b>Dem + 23</b>
<b>Governor</b>	<b>49%</b>	<b>36%</b>	<b>7%</b>	<b>Dem + 13</b>
<b>Attorney General</b>	<b>49%</b>	<b>37%</b>	<b>14%</b>	<b>Dem + 12</b>
<b>Siena College Poll – November 4, 2018</b>				

**Gillibrand Lead Over Farley Down a Little; Still Comfortably Ahead by 23 Points**

“Gillibrand’s favorability rating, 46-34 percent, fell a little again this month, and voters give Gillibrand her highest unfavorable rating in eight years. Farley was unknown to 89 percent of voters in February and remains unknown to 86 percent of voters on the eve of the election,” Greenberg said. “Gillibrand gets 90 percent support from Democrats, picks up 20 percent of Republicans and splits independents with Farley. Gillibrand is supported by more than three-quarters in New York City, and leads by nine points upstate and in the downstate suburbs.

**DiNapoli Increases Dominating Lead Over Trichter in Bid for Re-election**

“Although the state’s chief financial officer for the last 11 years remains largely unknown to half the electorate, DiNapoli has a 37-point lead over Trichter, largely unknown to nearly all of the electorate,” Greenberg said. “DiNapoli has the support of 85 percent of Democrats. Trichter only leads among Republicans 53-30 percent. And DiNapoli wins independents better than two-to-one. He wins big in every region and it looks like he will get more votes this year than any other candidate, just as he did four years ago.”

**James Maintains Low Double Digit Lead Over Wofford; Now leads 49-37 Percent**

“James and Wofford continue to battle it out in the only statewide race with no incumbent. But little has changed in the basic dynamics of this race over the last month. Both candidates are running strong with their party’s voters and independents who had tilted slightly toward James, now tilt toward Wofford by four points,” Greenberg said. “James’s natural advantage in New York City – overwhelmingly Democratic and where she’s won two citywide races – continues to be the difference in this race, as she has support of nearly three-quarters of voters there. However, outside of the City, Wofford has a slim lead among suburban and upstate voters.

“James continues to crush Wofford with black and Latino voters, and white voters continue to narrowly lean toward James, 45-41 percent,” Greenberg said. “Despite his television ad buy, Wofford remains unknown to 85 percent of voters. While James is not much more well known than Wofford outside of New York City, she has a 56-16 percent favorability rating among City voters.”

**Dems Want Dems in November; Reps Want Reps; Independents Divided**

By 56-41 percent, virtually unchanged over the last several months, voters say they want to see the House of Representatives controlled by the Democrats next year and by 53-42 percent, also little changed over the last several months, they want Democrats to control the State Senate.

“In this era of sharp partisan divide, Democrats and Republicans agree – almost unanimously – on one thing: they want their party to control the House of Representatives and the New York State Senate next year. Independents are evenly divided on the House question and very closely divided on the State Senate question,” Greenberg said.

**Voters Don’t Think State or Country Are Headed on the Right Track**

“By a 47-40 percent margin, up from 44-42 percent last month, voters say New York is headed in the wrong direction. This is the most pessimistic voters have been about the direction of the state in more than three years, since September 2015,” Greenberg said. “Voters are even more pessimistic about the direction of the country, saying the U.S. is headed in the wrong direction by a 56-39 percent margin, little changed from last month. Republicans are positive about the direction of the country and negative about the direction of the state. Not surprisingly, Democrats are the exact opposite. Independents are negative on the state’s direction and divided on the direction of the country.”

###

This Siena College Poll was conducted October 28-November 1, 2018 by telephone calls conducted in English to 641 likely New York State 2018 general election voters. Calls were made to a sample of registered voters. It has an overall margin of error of  $\pm 3.9$  percentage points including the design effects resulting from weighting. Sampling was conducted via a stratified dual frame sample of landline and cell phone telephone numbers from the L-2 Voter list. A likely-to-vote probability was computed for each respondent based on both their stated likelihood to vote as well as by virtue of the imputation of a turnout probability score based on past household voting behavior. This probability to vote was applied as a weight along with a weight that considered historic party by region turnout, age and gender. The Siena College Research Institute, directed by Donald Levy, Ph.D., conducts political, economic, social and cultural research primarily in NYS. SCRI, an independent, non-partisan research institute, subscribes to the American Association of Public Opinion Research Code of Professional Ethics and Practices. For more information, call Steve Greenberg at (518) 469-9858. For survey cross-tabs: [www.Siena.edu/SCRI/SNY](http://www.Siena.edu/SCRI/SNY).



# SIENA COLLEGE RESEARCH INSTITUTE

SIENA COLLEGE, LOUDONVILLE, NY

[www.siena.edu/scri](http://www.siena.edu/scri)

## Siena College Poll Trends – November 2018

**Q. 1** Is New York State on the right track, or is it headed in the wrong direction?

DATE	RIGHT TRACK	WRONG DIRECTION	DON'T KNOW/NO OPINION
November 2018*	40	47	13
October 2018*	42	44	14
June 2018*	45	41	14
April 2018	44	44	12
March 2018	46	42	12
February 2018	48	39	13
January 2018	50	35	15
<b>HIGHEST EVER</b>	<b>57 (1/13)</b>	<b>76 (10/31/10)</b>	<b>30 (1/07)</b>
<b>LOWEST EVER</b>	<b>14 (10/10)</b>	<b>26 (1/07)</b>	<b>7 (2/17, 5/13)</b>

**Q. 2** Is the United States on the right track, or is it headed in the wrong direction?

DATE	RIGHT TRACK	WRONG DIRECTION	DON'T KNOW/NO OPINION
November 2018*	39	56	5
October 2018*	38	56	7
June 2018*	39	54	7
April 2018	30	63	6
March 2018	33	58	9
February 2018	34	59	7
January 2018	33	58	9
<b>HIGHEST EVER</b>	<b>62 (5/09)</b>	<b>74 (10/13, 8/11)</b>	<b>17 (9/08)</b>
<b>LOWEST EVER</b>	<b>19 (10/13, 10/08)</b>	<b>24 (12/09)</b>	<b>5 (1/13)</b>

**Q. 3** Do you have a favorable or unfavorable opinion about Donald Trump?

DATE	FAVORABLE	UNFAVORABLE	DON'T KNOW/NO OPINION
November 2018*	39	58	3
October 2018*	37	59	4
June 2018*	38	59	3
April 2018	31	65	4
March 2018	33	63	4
February 2018	33	62	4
January 2018	32	63	4
<b>HIGHEST EVER</b>	<b>41 (12/16)</b>	<b>72 (8/16)</b>	<b>10 (10/13)</b>
<b>LOWEST EVER</b>	<b>24 (8/16)</b>	<b>53 (12/16)</b>	<b>2 (9/15)</b>

**Q. 4** Do you have a favorable or unfavorable opinion about Andrew Cuomo?

DATE	FAVORABLE	UNFAVORABLE	DON'T KNOW/NO OPINION
November 2018*	45	49	5
October 2018*	50	46	4
June 2018*	51	44	5
April 2018	49	44	6
March 2018	52	40	8
February 2018	53	40	7
January 2018	62	30	8
<b>HIGHEST EVER</b>	<b>77 (2/11)</b>	<b>49 (11/18)</b>	<b>24 (1/06, 2/06, 9/07)</b>
<b>LOWEST EVER</b>	<b>44 (8/06, 10/06)</b>	<b>14 (8/09)</b>	<b>3 (10/16, 10/20/10)</b>

## Siena College Poll Trends – November 2018 – Page 2

**Q. 5** Do you have a favorable or unfavorable opinion about Marc Molinaro?

DATE	FAVORABLE	UNFAVORABLE	DON'T KNOW/NO OPINION
November 2018*	29	25	46
October 2018*	24	20	56
June 2018*	18	11	71
April 2018	13	11	75
March 2018	10	13	77
<b>HIGHEST EVER</b>	<b>29 (11/18)</b>	<b>25 (11/18)</b>	<b>77 (3/18)</b>
<b>LOWEST EVER</b>	<b>10 (3/18)</b>	<b>11 (6/18, 4/18)</b>	<b>46 (11/18)</b>

**Q. 6** Do you have a favorable or unfavorable opinion about Larry Sharpe?

DATE	FAVORABLE	UNFAVORABLE	DON'T KNOW/NO OPINION
November 2018*	10	8	82
October 2018*	5	10	84
<b>HIGHEST EVER</b>	<b>10 (11/18)</b>	<b>10 (10/18)</b>	<b>84 (10/18)</b>
<b>LOWEST EVER</b>	<b>5 (10/18)</b>	<b>8 (11/18)</b>	<b>82 (11/18)</b>

**Q. 7** Do you have a favorable or unfavorable opinion about Howie Hawkins?

DATE	FAVORABLE	UNFAVORABLE	DON'T KNOW/NO OPINION
November 2018*	9	10	81
October 2018*	7	7	86
October 2014*	10	12	78
<b>HIGHEST EVER</b>	<b>10 (10/14, 9/14)</b>	<b>12 (10/14, 9/14)</b>	<b>86 (10/18, 8/14)</b>
<b>LOWEST EVER</b>	<b>7 (10/18, 8/14)</b>	<b>7 (10/18, 8/14)</b>	<b>77 (9/14)</b>

**Q. 8** Do you have a favorable or unfavorable opinion about Stephanie Miner?

DATE	FAVORABLE	UNFAVORABLE	DON'T KNOW/NO OPINION
November 2018*	11	7	82
October 2018*	11	11	78
<b>HIGHEST EVER</b>	<b>11 (11/18, 10/18)</b>	<b>11 (10/18)</b>	<b>82 (11/18)</b>
<b>LOWEST EVER</b>	<b>11 (11/18, 10/18)</b>	<b>7 (11/18)</b>	<b>78 (10/18)</b>

**Q. 9** Do you have a favorable or unfavorable opinion about Kirsten Gillibrand?

DATE	FAVORABLE	UNFAVORABLE	DON'T KNOW/NO OPINION
November 2018*	46	34	20
October 2018*	49	33	19
June 2018*	53	28	19
April 2018	48	29	23
March 2018	49	25	25
February 2018	48	27	25
January 2018	51	23	26
<b>HIGHEST EVER</b>	<b>61 (12/12)</b>	<b>34 (11/18, 10/31/10)</b>	<b>56 (1/09)</b>
<b>LOWEST EVER</b>	<b>26 (3/09)</b>	<b>14 (1/09)</b>	<b>14 (10/31/10)</b>

**Q. 10** Do you have a favorable or unfavorable opinion about Chele Chiavacci Farley?

DATE	FAVORABLE	UNFAVORABLE	DON'T KNOW/NO OPINION
November 2018*	6	8	86
October 2018*	7	7	87
June 2018*	5	4	91
April 2018	5	7	88
March 2018	5	9	86
February 2018	6	6	89
<b>HIGHEST EVER</b>	<b>7 (10/18)</b>	<b>9 (3/18)</b>	<b>91 (6/18)</b>
<b>LOWEST EVER</b>	<b>5 (6/18, 4/18, 3/18)</b>	<b>4 (6/18)</b>	<b>86 (11/18, 3/18)</b>

## Siena College Poll Trends – November 2018 – Page 3

**Q. 11** Do you have a favorable or unfavorable opinion about Thomas DiNapoli?

DATE	FAVORABLE	UNFAVORABLE	DON'T KNOW/NO OPINION
November 2018*	33	16	52
October 2018*	29	9	62
June 2018*	32	15	53
April 2018	26	15	58
March 2018	28	14	58
January 2018	27	12	62
<b>HIGHEST EVER</b>	<b>35 (10/14)</b>	<b>36 (10/31/10)</b>	<b>80 (6/07)</b>
<b>LOWEST EVER</b>	<b>7 (6/07, 5/07)</b>	<b>9 (10/18)</b>	<b>37 (10/31/10)</b>

**Q. 12** Do you have a favorable or unfavorable opinion about Jonathan Trichter?

DATE	FAVORABLE	UNFAVORABLE	DON'T KNOW/NO OPINION
November 2018*	4	7	89
October 2018*	5	6	89
June 2018*	5	5	91
<b>HIGHEST EVER</b>	<b>5 (10/18, 6/18)</b>	<b>7 (11/18)</b>	<b>91 (6/18)</b>
<b>LOWEST EVER</b>	<b>4 (11/18)</b>	<b>5 (6/18)</b>	<b>89 (11/18, 10/18)</b>

**Q. 13** Do you have a favorable or unfavorable opinion about Letitia James?

DATE	FAVORABLE	UNFAVORABLE	DON'T KNOW/NO OPINION
November 2018*	28	12	60
October 2018*	31	10	58
June 2018*	20	10	70
<b>HIGHEST EVER</b>	<b>31 (10/18)</b>	<b>12 (11/18)</b>	<b>70 (6/18)</b>
<b>LOWEST EVER</b>	<b>20 (6/18)</b>	<b>10 (10/18, 6/18)</b>	<b>58 (10/18)</b>

**Q. 14** Do you have a favorable or unfavorable opinion about Keith Wofford?

DATE	FAVORABLE	UNFAVORABLE	DON'T KNOW/NO OPINION
November 2018*	8	8	85
October 2018*	8	5	86
June 2018*	5	5	89
<b>HIGHEST EVER</b>	<b>8 (11/18, 10/18)</b>	<b>8 (11/18)</b>	<b>89 (6/18)</b>
<b>LOWEST EVER</b>	<b>5 (6/18)</b>	<b>5 (10/18, 6/18)</b>	<b>85 (11/18)</b>

**Q. 15** If the election for Governor was held today and the candidates were Andrew Cuomo on the Democratic, Independence, Working Families, and Women's Equality Party lines, Marc Molinaro on the Republican, Conservative and Reform Party lines, Howie Hawkins on the Green Party line, Stephanie Miner on the Serve America Movement Party line, and Larry Sharpe on the Libertarian Party line, would you vote for Molinaro, Cuomo, Sharpe, Miner, or Hawkins? (Candidate names were rotated, although the Democrat and Republican were always rotated as the first two choices. Nixon was included in October but not in the current poll.)

DATE	CUOMO	MOLINARO	HAWKINS	MINER	NIXON	SHARPE	OTHER/NOBODY/DK/NO
November 2018*	49	36	2	2	NA	3	7
October 2018*	50	28	1	1	10	2	8
<b>HIGHEST EVER</b>	<b>50 (10/18)</b>	<b>36 (11/18)</b>	<b>2 (11/18)</b>	<b>2 (11/18)</b>	<b>10 (10/18)</b>	<b>3 (11/18)</b>	<b>8 (10/18)</b>
<b>LOWEST EVER</b>	<b>49 (11/18)</b>	<b>28 (10/18)</b>	<b>1 (10/18)</b>	<b>1 (10/18)</b>	<b>10 (10/18)</b>	<b>2 (10/18)</b>	<b>7 (11/18)</b>

**Q. 16** If the election for United States Senator was held today and the candidates were Kirsten Gillibrand on the Democratic line and Chele Chiavacci Farley on the Republican line, would you vote for Farley or Gillibrand? (Candidate names were rotated.)

DATE	GILLIBRAND	FARLEY	OTHER/NOBODY/DK/NO
November 2018*	58	35	8
October 2018*	61	29	10
June 2018*	61	28	10
April 2018	58	27	15
March 2018	60	24	16
<b>HIGHEST EVER</b>	<b>61 (10/18, 6/18)</b>	<b>35 (11/18)</b>	<b>16 (3/18)</b>
<b>LOWEST EVER</b>	<b>58 (11/18, 4/18)</b>	<b>24 (3/18)</b>	<b>8 (11/18)</b>

## Siena College Poll Trends – November 2018 – Page 4

- Q. 17** If the election for New York State Comptroller was held today and the candidates were Tom DiNapoli on the Democratic line and Jonathan Trichter on the Republican line, would you vote for Trichter or DiNapoli? (Candidate names were rotated.)

DATE	DiNAPOLI	TRICHTER	OTHER/NOBODY/DK/NO
November 2018*	62	25	13
October 2018*	58	26	16
June 2018*	56	22	22
<b>HIGHEST EVER</b>	<b>62 (11/18)</b>	<b>26 (10/18)</b>	<b>22 (6/18)</b>
<b>LOWEST EVER</b>	<b>56 (6/18)</b>	<b>22 (6/18)</b>	<b>13 (11/18)</b>

- Q. 18** If the election for New York State Attorney General was held today and the candidates were Letitia James on the Democratic line and Keith Wofford on the Republican line, would you vote for Wofford or James? (Candidate names were rotated.)

DATE	JAMES	WOFFORD	OTHER/NOBODY/DK/NO
November 2018*	49	37	14
October 2018*	50	36	15
<b>HIGHEST EVER</b>	<b>50 (10/18)</b>	<b>37 (11/18)</b>	<b>15 (10/18)</b>
<b>LOWEST EVER</b>	<b>49 (11/18)</b>	<b>36 (10/18)</b>	<b>14 (11/18)</b>

- Q. 19** Currently, the Republicans have a majority in the United States House of Representatives. Every seat is up for election in November. After the election, who would you like to see control the House of Representatives – the Democrats or the Republicans? (Choices were rotated.)

DATE	DEMOCRATS	REPUBLICANS	DON'T KNOW/NO OPINION
November 2018*	56	41	4
October 2018*	56	39	5
June 2018*	55	39	6
<b>HIGHEST EVER</b>	<b>56 (11/18, 10/18)</b>	<b>41 (11/18)</b>	<b>6 (6/18)</b>
<b>LOWEST EVER</b>	<b>55 (6/18)</b>	<b>39 (10/18, 6/18)</b>	<b>4 (11/18)</b>

- Q. 20** Currently, the New York State Senate in Albany is controlled by Republicans by a very narrow one-vote majority. After the election, who would you like to see control the New York State Senate – the Democrats or the Republicans? (Choices were rotated.)

DATE	DEMOCRATS	REPUBLICANS	DON'T KNOW/NO OPINION
November 2018*	53	42	5
October 2018*	54	40	6
June 2018*	52	42	6
<b>HIGHEST EVER</b>	<b>54 (10/18)</b>	<b>42 (11/18, 6/18)</b>	<b>6 (10/18, 6/18)</b>
<b>LOWEST EVER</b>	<b>52 (6/18)</b>	<b>40 (10/18)</b>	<b>5 (11/18)</b>

- Poll Trend Notes:** \* All surveys are of registered voters except for the following polls: October 2018, June 2018, November 2017, September thru November 2016, July thru October 2014, August/October 2012, October 2010, September/October 2008, and September/October 2006, which are polls of likely voters.

Trends reflect questions asked at least twice since the first Siena College Poll in February 2005.

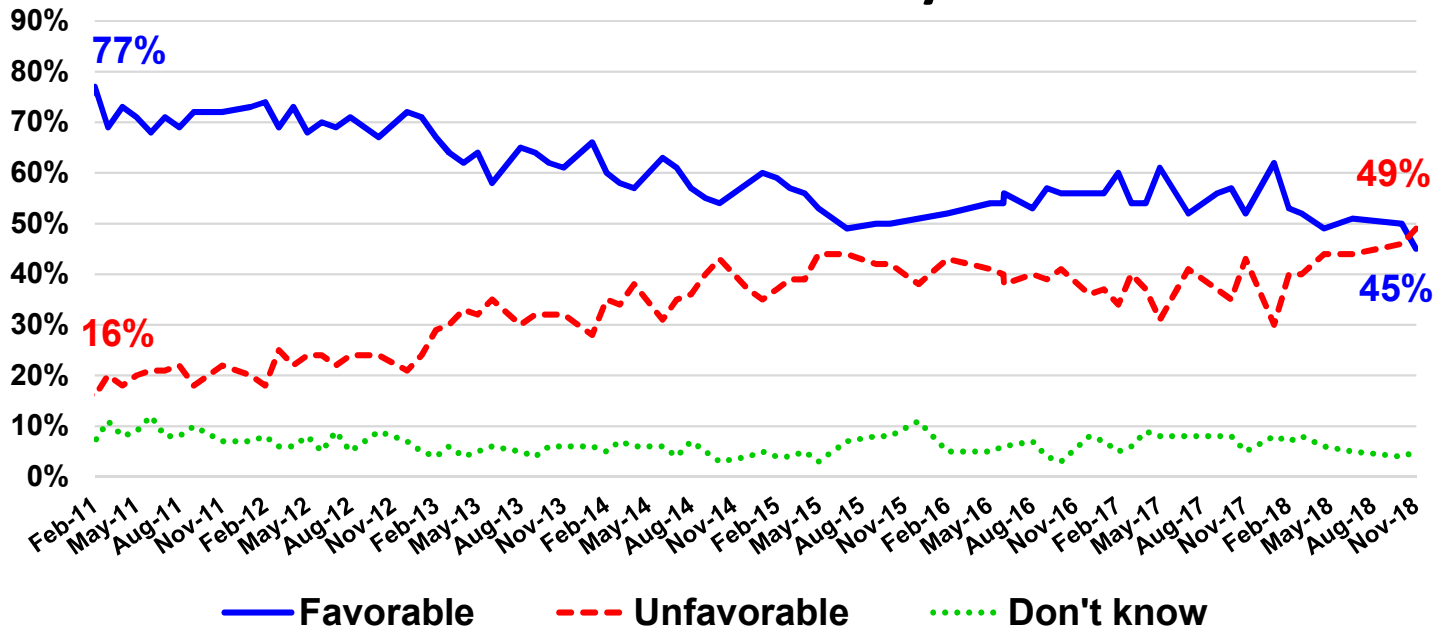
Results listed here include all times questions have been asked since January 2018.

“Highest Ever” and “Lowest Ever” are provided at the bottom of each question.

^ Inconsequential wording change.



# Andrew Cuomo Favorability 2011-2018



Siena College Polls 2011-2018