

hollywood**HUB**
 January 2021
 Hollywood Neighborhood Association

BRIDGE^{Housing}

HOLST

TRI  **MET**

TRY EXCELLENCE LLC

PROJECT TEAM / PRESENTING TODAY

NAME	POSITION	COMPANY
Roberto Gutierrez	Senior Community Engagement Coordinator	TriMet
Michelle Traver	Public Art Program Administrator	TriMet
Clay Thompson	Coordinator, Outreach Services	TriMet
Bob Hastings	Agency Architect	TriMet
Martin Leung	Manager, Acquisitions & Planning	BRIDGE Housing



H O L S T



TRY EXCELLENCE LLC

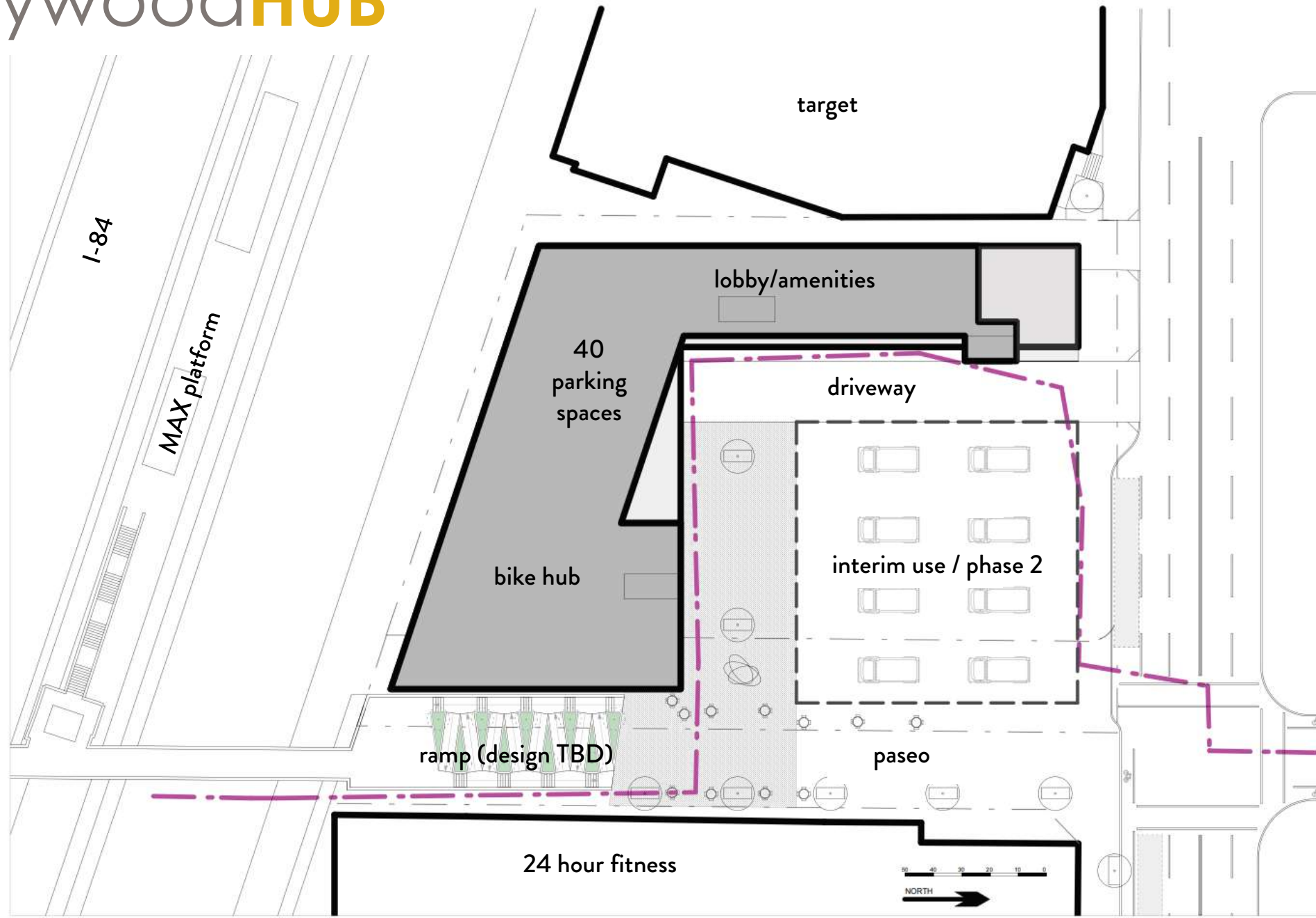
Changes Since July

- 213 units, to meet community demand for affordable housing
- 3-level parking stackers (40 spaces)
- 13 stories, between height of Hollywood Towne House and Hollywood East
- Discussions with potential partners e.g. NE Community Center, Hacienda, Self Enhancement Inc, Portland Housing Bureau

hollywoodHUB



hollywoodHUB



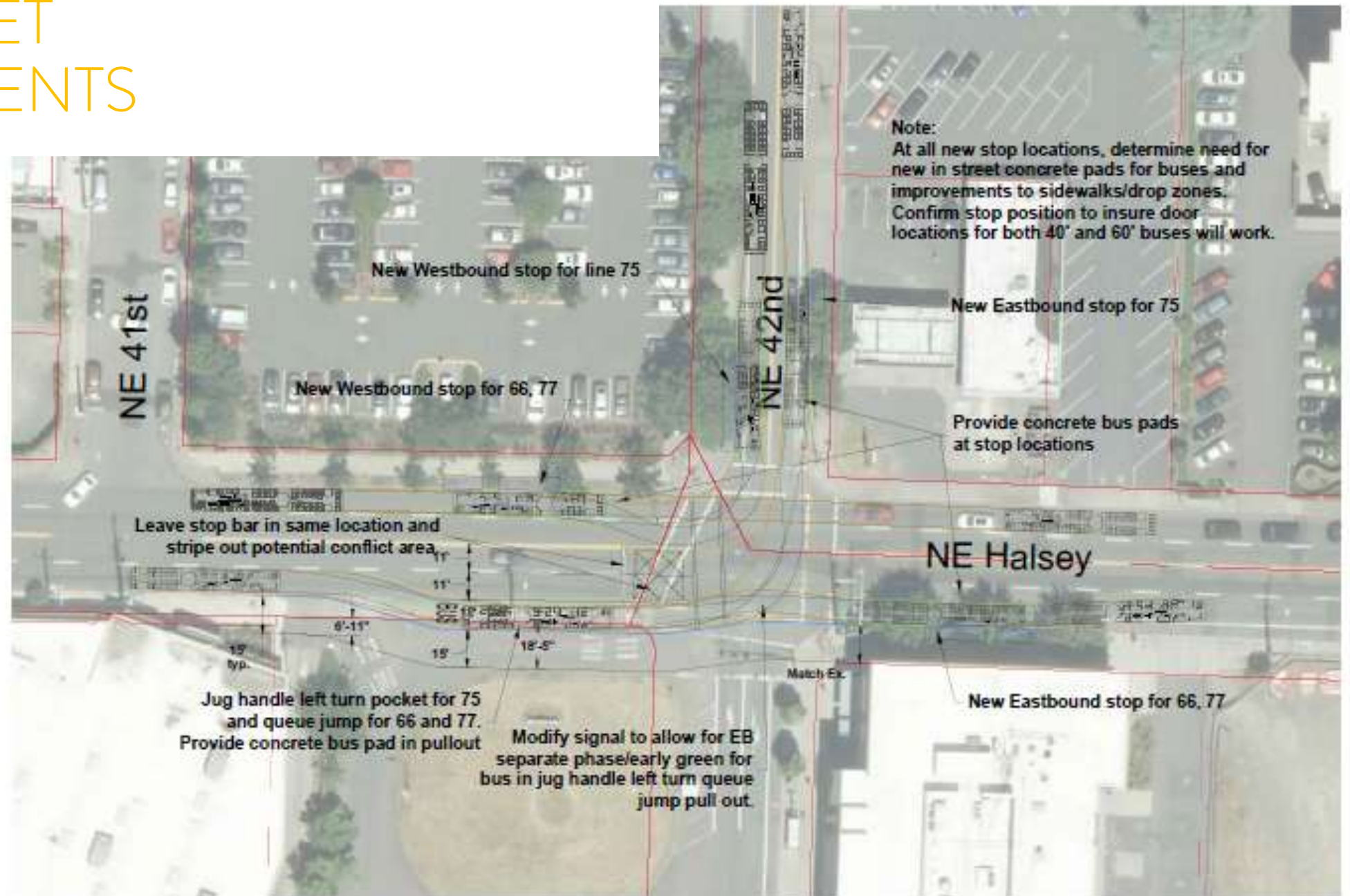
MEMORIAL

- Strategic Planning Phase – develop a professional, thoughtful and inclusive commissioning and outreach process with the assistance of experts in the field.

Some considerations:

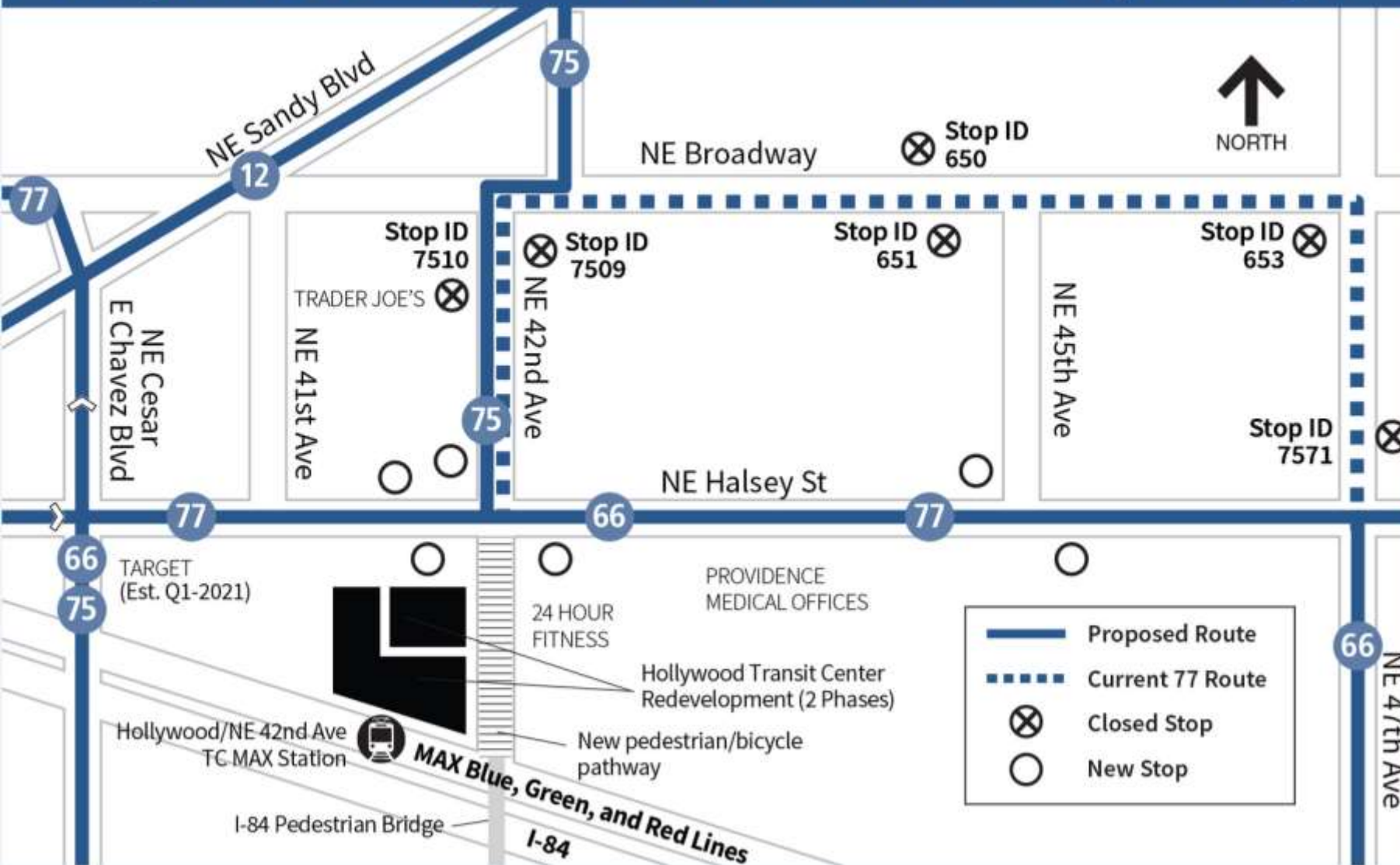
- Parameters and framework/approach
 - Victim's families, survivors, first-responders
 - Memorial Advisory Committee
 - Potential methods for community involvement
 - Current, temporary tribute mural
- More to come...

BUS & STREET IMPROVEMENTS



LINE 66, 75, & 77 ROUTE & STOP CHANGES

Hollywood Transit Center 66, 75, 77 Route/Stop Changes



Line 66-Marquam Hill

- Would change its route to a one-way loop on Halsey, 47th, & Glisan
- Would serve a new stop at Halsey & 42nd

Line 75-Cesar Chavez

- Would serve new stops at 42nd & Halsey
- Would not serve stops at 42nd & Broadway

Line 77-Broadway/Halsey

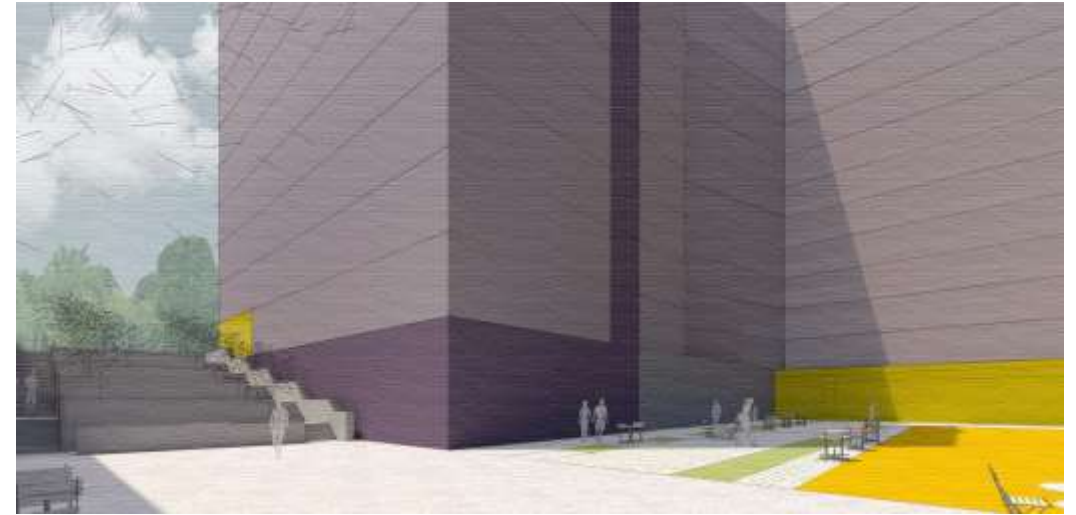
- Would remain on Halsey removing service on Broadway
- Would serve new stops at Halsey & 42nd and Halsey & 45th.

If approved, could take effect as early as September 2021

TRAFFIC ENGINEERING & RAMP DESIGN STUDIES

- Two traffic engineering studies are in progress:

1. The impact of the 213-unit affordable housing project on traffic volume and flow in the neighborhood
2. The impact of the relocated bus-stops, bus turn-in lane, and rephasing of the Halsey St & 42nd Ave traffic lights and pedestrian signals



- Initial reports due at the end of February. Reports will determine if further studies are required, or if final reports will be issued in early March
- A ramp design study is also in progress. This study will identify the most viable ramp options and the temporary ramp solutions to ensure uninterrupted access to the I-84 Bridge and MAX station throughout the project. This study is scheduled to be complete by the end of March

DRAFT SCHEDULE

	2021				2022				2023				2024+
	Q1	Q2	Q3	Q4	Q1	Q2	Q3	Q4	Q1	Q2	Q3	Q4	
Bus/Street Improv.													
Ramp/Substation													
Affordable Housing													
Paseo/Memorial													

	Planning
	Design & engineering
	Construction

NEXT STEPS

- Traffic study
- Memorial committee formation / community engagement
- Design for ramp, substation, bus improvements
- PBOT right-of-way vacation
- Early assistance meeting



Questions & Comments

hollywood**HUB**pdx.com
trimet.org/TOD

Phone: (503) 962 2190

Email: tod@trimet.org