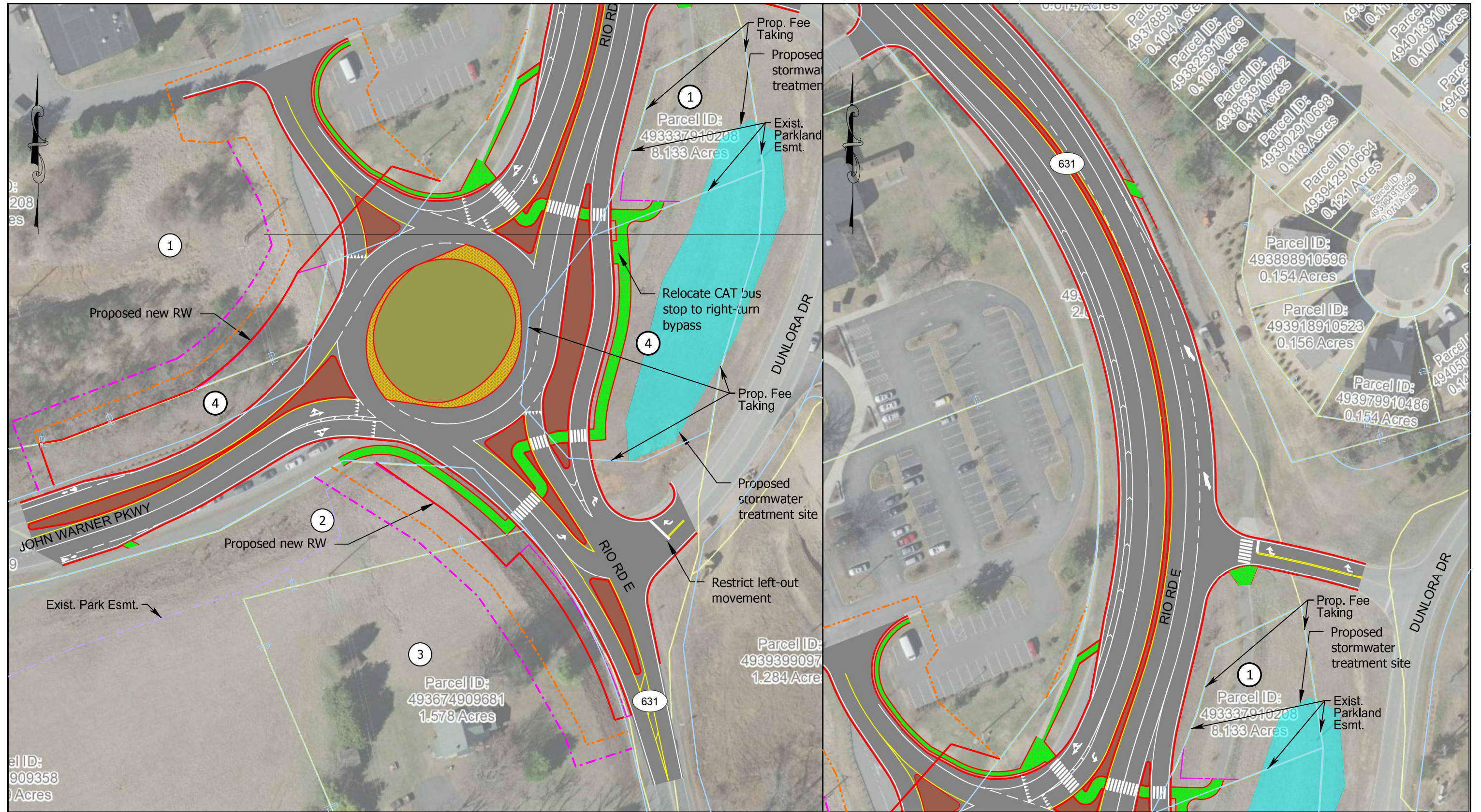
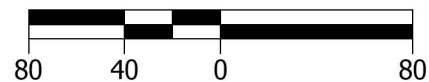


H:\222359 - VDOT NW & SW Region TE On-Call\205 - Rio Road E Intersection Studies\design\Modes\22359-205_design-concept_v3.dwg Mar 06, 2020 - 2:31pm - jcrisafi Layout Tab: Fig03_ConceptRdbt



Scale: 1" = 80'



PARCEL NUMBER

Roundabout Conceptual Design - DRAFT
Route 631 (Rio Road) / John Warner Parkway
Albemarle County, VA

Figure
3