

Accessibility

Public Transit

The Old Post Office is served by public transportation, and is accessible by Metra, L or buses. Click [here](#) to find the best way to travel to the building.

Handicap Access

The Old Post Office has a handicap access off the Van Buren entrance at 433 W Van Buren and off the Harrison entrance at 404 W Harrison.

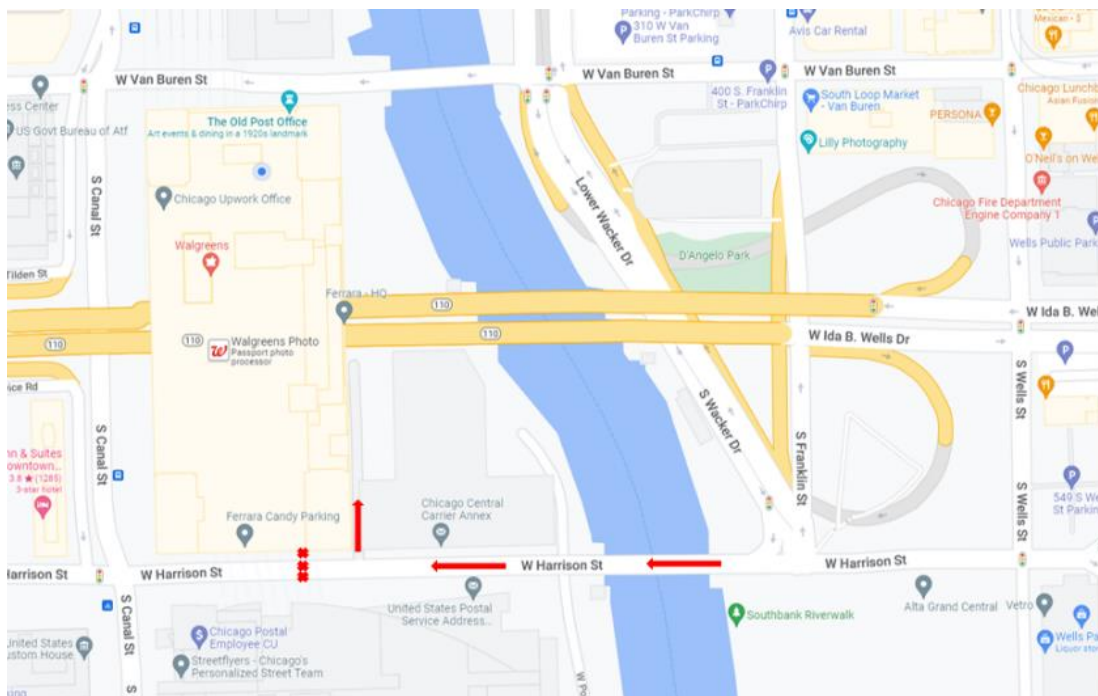
Parking

OLD POST OFFICE Parking Garage is OPEN.

HARRISON STREET is OPEN up to the point of construction zone.

Due to Harrison Street Road construction, patrons and tenants will be directed through the east side of the building.

See below street map. Specific directions are on page 3



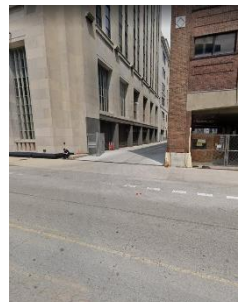
Accessibility



Wacker and Harrison Street,
looking west.



Turn right for Parking Garage.



Entrance to access parking
Garage.

The Old Post Office features an on-site, indoor parking garage that allows you to park at your convenience. Located conveniently off of Harrison Street, tenants enjoy direct access to our parking garage.

On-site parking: 404 W. Harrison is The Old Post Office Indoor

Lot

EVENING SPECIAL

In after 4:00 pm, out by 7:00am (Monday through Friday)

Evening

\$15



Accessibility

DIRECTIONS TO THE OLD POST OFFICE PARKING GARAGE

HARRISON STREET CONSTRUCTION - PARKING GARAGE DETOUR DIRECTIONS

Address: 404 W. Harrison Street, Chicago, IL 60607

433 W. VAN BUREN – IN FRONT OF THE OLD POST OFFICE

Go west on Van Buren Street to Canal Street. Turn right (north on Canal). Turn right (east on Jackson Blvd to Wells Street. Turn right (south on Wells Street) to Harrison Street. Turn right (west on Harrison Street) and travel past the sign blocking the road to through traffic until you arrive at 404 West Harrison Street on your right (west of Chicago River).

LAKE SHORE DRIVE – NORTH OR SOUTHBOUND

Exit at Balbo, head west towards State Street. Turn right on State Street (north) drive to Harrison Street. Turn left on Harrison (west) and travel past the sign blocking the road to through traffic until you arrive at 404 West Harrison on your right (west of Chicago River).

KENNEDY EXPRESSWAY – SOUTHBOUND

Exit at Jackson Street, and go east to Wells Street. Turn right (south) on Wells to Harrison Street. Turn right (west) on Harrison and travel past the sign blocking the road to through traffic until you arrive at 404 West Harrison Street on your right (west of Chicago River).

DAN RYAN EXPRESSWAY – NORTHBOUND

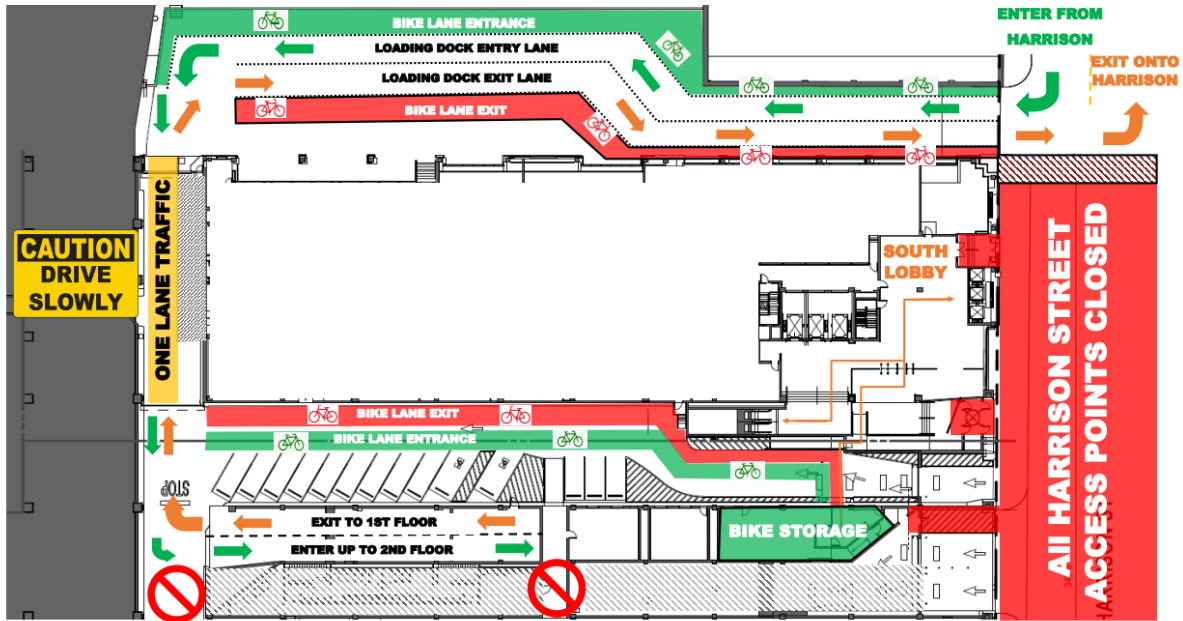
Exit at Ida B. Wells Drive and go eastbound to Wells Street. Turn right (south) on Wells to Harrison Street. Turn right (west) on Harrison and travel past the sign blocking the road to through traffic until you arrive at 404 West Harrison Street on your right (west of Chicago River).

EISENHOWER EXPRESSWAY – EASTBOUND

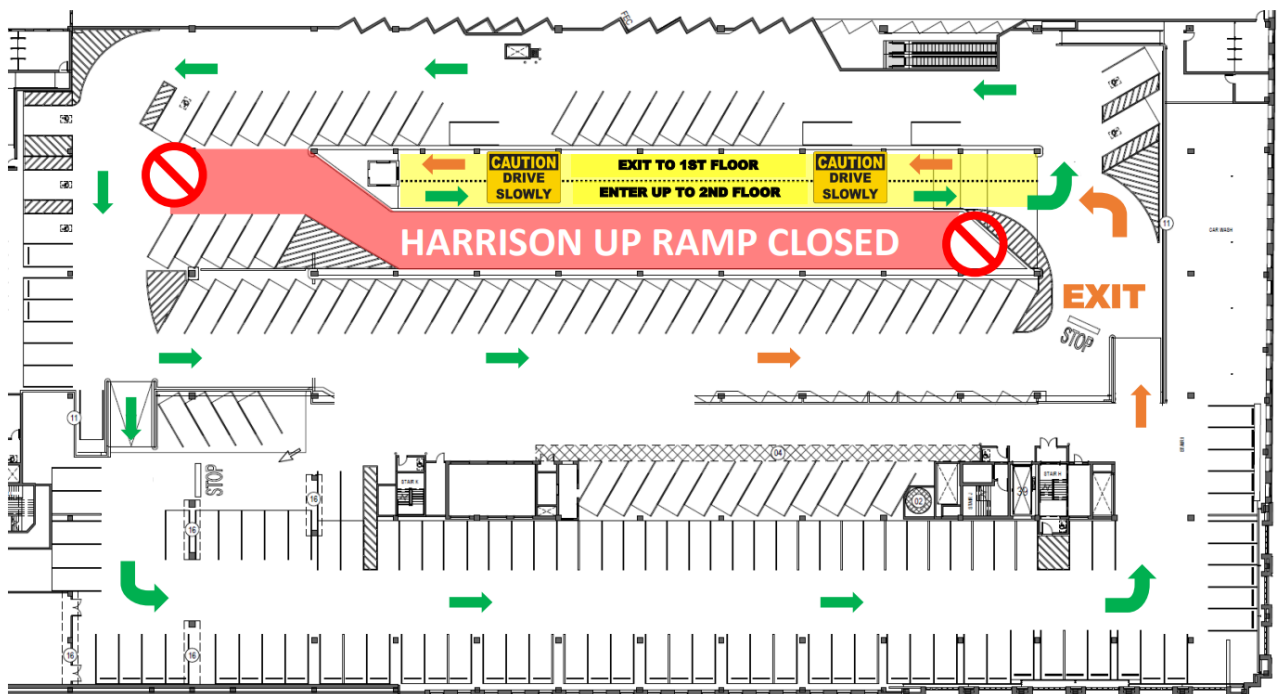
Follow expressway east through Ida B. Wells expressway to Wells. Turn right (south) on Wells to Harrison Street. Turn right (west) on Harrison and travel past the sign blocking the road to through traffic until you arrive at 404 West Harrison Street on your right (west of Chicago River).



Accessibility



1ST FLOOR PARKING GARAGE



2nd FLOOR PARKING GARAGE

