



# The OPHS News

The Newsletter of the Overland Park Historical Society



Volume 32, Issue 2

[www.ophistorical.org](http://www.ophistorical.org)

Apr./May/June 2026

## MAY 16 MEETING: METCALF AVE. MEMORIES

Get ready for a nostalgic trip down our favorite O.P. street!



**Metcalf Avenue Memories** will be the subject of our next general meeting on May 16. Executive Director, Brad Moore, will be giving a very nostalgic and enjoyable presentation which will recount many of the memorable businesses that opened along Metcalf Avenue from 1955 to the present. Hundreds of vintage photos and some fun trivia are part of the presentation. If you want to take a trip back in time, please join us at 10 a.m. on Saturday, May 16 at the American Legion Post, located at 7500 W. 75th St. Donuts and beverages will be served, along with plenty of memories!

# President's Message

Spring 2026 is a busy and exciting time for the Overland Park Historical Society. Led by Vicki Lilly, our Strategic Development Advisor, members of your Board have been meeting regularly with “A” list business institutions in and around Overland Park. We are acquainting these business executives with the mission and vision of our Society. These meetings are in support of our ongoing effort to raise the funds necessary to allow your Society to operate, grow our membership and achieve our programming goals.

In addition, we continue to interact with the City of Overland Park. We do so as a repository of City history, but also for discussions about completion of the Plaza that is projected to be finished next to the Depot in the future. We believe these meetings have been positive for both the City's and OPHS's goals for Downtown OP.

I want to personally thank each of you as members for your continued support of the OPHS. Organizations like ours depend for survival on the generosity of its Members, Supporters, Donors and Grantors.

Your Board is devoting virtually all its time in 2026 to developing the financial base necessary to support our long-term operational goals. Our success in this will be a further encouragement to our Donors and Grantors! We are working hard so that when we get to the end of the year, we have that goal accomplished. To make that happen we need your continuing support and the support of Donors, Grantors and the City of Overland Park. Thanks so much for being there for us.

Preserving our history past, present and future; taking our history into school classrooms and the community at large; telling our story to new and long-time residents. It's our mission. Join us!

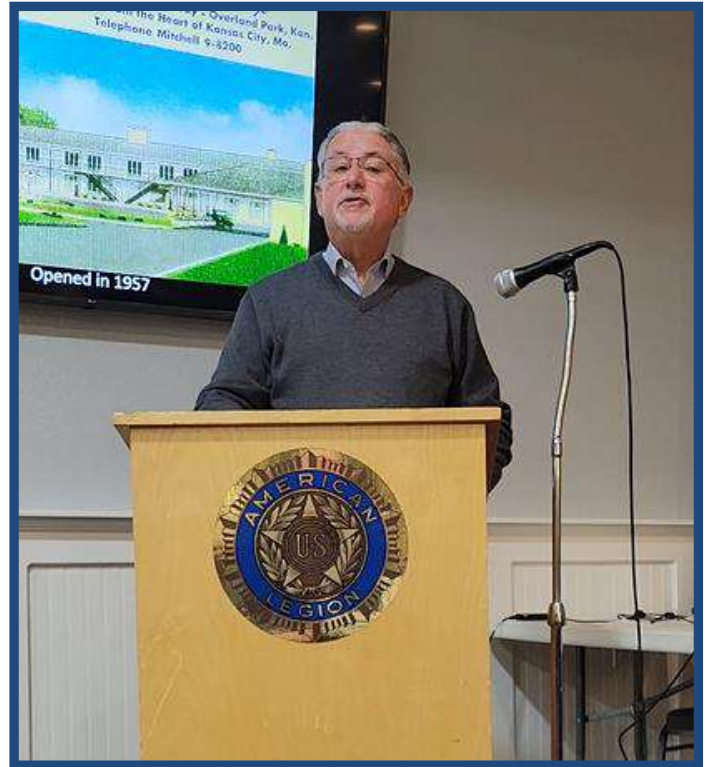
Rod Richardson  
President  
Overland Park Historical Society

# February 21 General Meeting

Several members attended our February 21 general meeting to learn about our organization's fundraising goals and methods to achieve them. Vicki Lilly, our Strategic Development Advisor, outlined ten tactics designed to help us reach our 2026 fundraising goals. Robert Sparrow, with Triune Financial Partners, discussed estate planning. Both provided invaluable information that will guide our fundraising efforts this year and beyond. Thank you Vicki and Bob for a very informative program!



*Vicki Lilly presented her 10-tactic plan*



*Robert Sparrow discussed estate planning*



*Rod Richardson provided general updates*



*Paul Lyons outlines the current budget*

# St. Patrick's Day Parade: March 7

Thousands gathered in Downtown Overland Park on March 7 for the annual St. Patrick's Day Parade. The festive event brought several visitors into Discover O.P. And guess who was the Grand Marshal of the parade? Our own Vicki Lilly!



Grand Marshal, Vicki Lilly, rides in style



Vicki waves to the parade bystanders



K.C. Wolf excites the crowd



# O.P. Governing Body Presentation

On March 31, Executive Director, Brad Moore, gave a presentation before members of the City Council and staff on the early history of Overland Park. The presentation focused on the Strang Era and was very well received. Many in attendance were not aware of the city's amazing early history. As a result, a second presentation will be offered later in the year. This session will focus on the history of the city since incorporation in 1960. It is important for incoming council members to be aware of the city's history, and OPHS was happy to provide this opportunity at Discover O.P.





# HOP in DOP

Over two-hundred youngsters and their parents visited Discover O.P. during the **Hop in Dop** event on April 4. Sponsored by the Overland Park Downtown Partnership, this annual event features an appearance by the Easter Bunny at Thompson Park, followed with a candy giveaway by participating merchants. For many families, this was their first visit to Discover O.P., and many took the extra time to explore the space with their children.



*A mother and daughter enjoy exploring one of the dollhouses on display*

*Brad Moore, Paul Lyons, Alice Hawk and Jim Francis greeted the many visitors*

# After Hours Event at Discover O.P.



**Overland  
Park  
Chamber™**

On April 23, OPHS hosted an Overland Park Chamber After Hours social event. Over 60 members of the chamber enjoyed appetizers and conversation while experiencing Discover O.P. and learning how we are preserving and sharing the community's memories and history. Several OPHS board members were present for this event, allowing for new introductions and opportunities for future collaboration. OPHS jigsaw puzzles and a framed poster were raffled off to three lucky winners. Thanks to all who helped with this successful event!

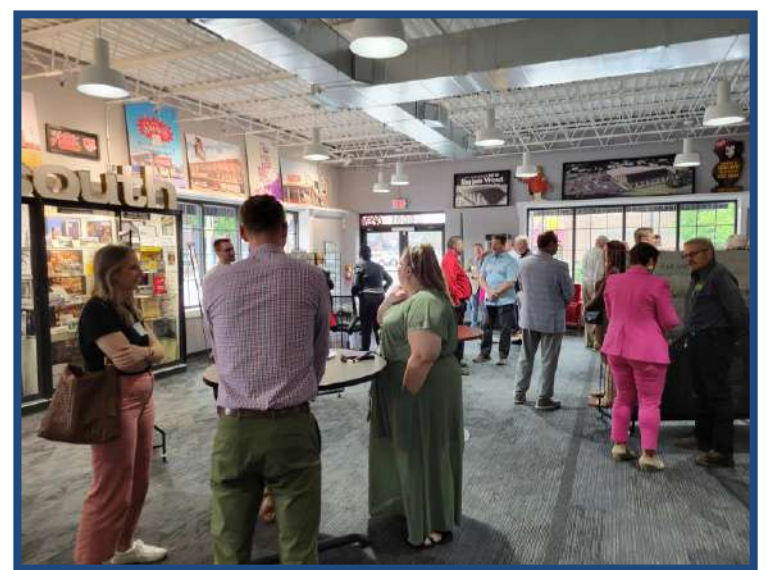


*Will Mann, Chamber Board Officer*



*Brad Moore provided opening remarks*

# After Hours Event at Discover O.P.



## 60 Years Ago...

# The Katherine Carpenter Tornado



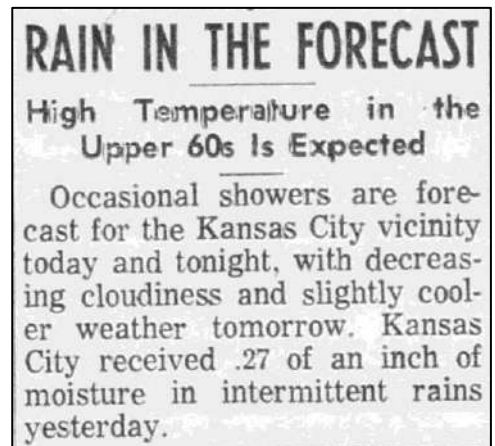
For most residents living in Overland Park in 1966, the tornado in the movie "The Wizard of Oz" was most likely the only tornado they had ever seen. But on April 19<sup>th</sup>, 1966, that would all change.

Tuesday, April 19<sup>th</sup> started as routinely as any other day. Many locals were discussing how "The Sound Of Music" won the Oscar for Best Picture the night before. The forecast called for a partly cloudy day with a high temperature of 65 degrees and a chance of rain in the afternoon and evening. Around 3 p.m. many housewives and mothers in the newly developed Woodstock residential subdivision near 95<sup>th</sup> & Knox Drive were preparing for their children to come home from the nearby Katherine Carpenter Elementary School, one of the newer schools in the Valley View School District.

By 3:00 p.m. dark clouds had formed to the southwest and could be seen as far away as downtown Kansas City. The local weather bureau had already been following this development, after a series of small funnel clouds had been reported dropping out of the skies further south of Overland Park. By 3:15 p.m., the bureau made the decision to issue a tornado alert to local radio and television stations.

Meanwhile, students at Katherine Carpenter Elementary had just been released for the day. The children were in the process of exiting the building to either walk home or head toward their assigned school bus, when several adults at the school observed a distinct white colored funnel cloud dropping from the darkened sky and appearing to head directly toward them. It was a confusing and tense situation because the civil defense sirens were not sounding, and yet the funnel was clearly visible and appeared to be gaining strength.

Third grade teacher Mary Hatfield was tidying up her classroom when suddenly several of her students ran back into the room with the shocking announcement that a large white funnel was approaching the school and that all students had been ushered back inside the building. Then the sound of the increasing winds could be heard. Mrs. Hatfield and other teachers huddled the children into corners of classrooms and quickly instructed them to bend over and put their hands over their heads. Some students began to cry, while others began to pray.



The weather forecast, as it appeared in the morning edition of the Kansas City Times, offered no indication of what was to come that afternoon.

# The Katherine Carpenter Tornado

Dick Mason, a draftsman for Black & Veatch, spotted the funnel cloud from his office at Meadowlake & State Line Road. He quickly grabbed his still camera and snapped photos that would appear in the morning edition of the Kansas City Times newspaper. At this same time, Overland Park resident Jim Rollins was in his back yard near 98<sup>th</sup> & Metcalf when he saw the funnel descending a mile and a half to the west. Thinking quickly, Jim grabbed his 8mm home movie camera and managed to capture film footage of the funnel as it touched down and officially became a tornado. Still, no sound of sirens.

The tornado had touched down just south of the school near 96<sup>th</sup> Terrace and Knox Drive and immediately began to wreak havoc and destruction in the Woodstock subdivision. Mothers took shelter in their basements and prayed that their children would be safe at the school. Husbands and fathers working downtown helplessly watched and worried as the tornado made its way through their suburb to the southwest, fearful of its path and whether their families would be spared.

Upon touching down, the white funnel quickly turned black as it picked up debris along its northeasterly path down 96<sup>th</sup> Street. Roof shingles, lumber, insulation and sheetrock exploded and became airborne. At Katherine Carpenter school, windows began to shatter blow out as the roar of the tornado could be heard passing just to the south..

And less than a minute later, the tornado lifted back up into the clouds as the storm proceeded to the northeast. There was an eerie moment of silence, broken only by the sound of airborne objects hitting the ground. And then, finally, the wailing sound of a nearby civil defense siren. Teachers and students waited for the all-clear and confirmation that the danger had passed. Parents then scrambled to the school in cars and on foot in hopes of being reunited safely with their children.



Shawnee Mission West student, Doug Fisher, snapped this photo of the tornado from outside the school.



Dick Mason's photos taken from his office as featured in the Kansas City Times on April 20, 1966

# The Katherine Carpenter Tornado

Within 30 minutes, police, fire and emergency services raced to the scene to assist those in need. Joe Ross, the manager of the nearby Glenwood Manor Motor Hotel, was one of the first civilians on the scene. Joe accompanied Overland Park Police Chief John Kenyon, going door-to-door to check on the welfare of residents impacted by the tornado. Surveying the incredible damage effecting four neighborhood streets, Joe Ross coordinated with the Red Cross and offered free rooms at the Glenwood Manor to anyone who had been displaced by the disaster.



*Joe Ross (center), then-manager of the Glenwood Manor Motor Hotel, was one of the first civilians on the scene. After surveying the damage, he coordinated with the area Red Cross to provide free rooms at the motel for anyone displaced by the tornado. Several families stayed at the motel for anywhere from several days to several weeks, and for many years after they held reunion gatherings at the motel.*

In total, 50 homes in the Woodstock subdivision had been either significantly damaged or destroyed. Miraculously, there were no fatalities, and only five residents who required treatment at Shawnee Mission Hospital. Damage to the school was mostly limited to windows and portions of the roof, but the damage was severe enough that the school had to close for the remainder of the school year, with the students transferred temporarily to the Valley View Elementary School while repairs were made.

News coverage of the destruction lead all evening newscasts. In the days following the incident, many eyewitness accounts were recorded and documented. Overland Park Mayor, Marvin Rainey, expressed concern over the fact that the civil defense sirens were not activated until AFTER the storm had passed. Ten minutes of advanced warning were lost, and significant changes to the procedures and protocols for siren activation were changed because of this incident.

Sixty years later, there are no lasting traces of that frightening April afternoon. Some residents impacted by the tornado still live in their same homes today and have shared their story over the years with new neighbors. To this day, the tornado of April 19, 1966, holds the record as the most destructive tornado event in the city's history since incorporation. It is hoped that record will remain intact for many years to come.

# The Katherine Carpenter Tornado

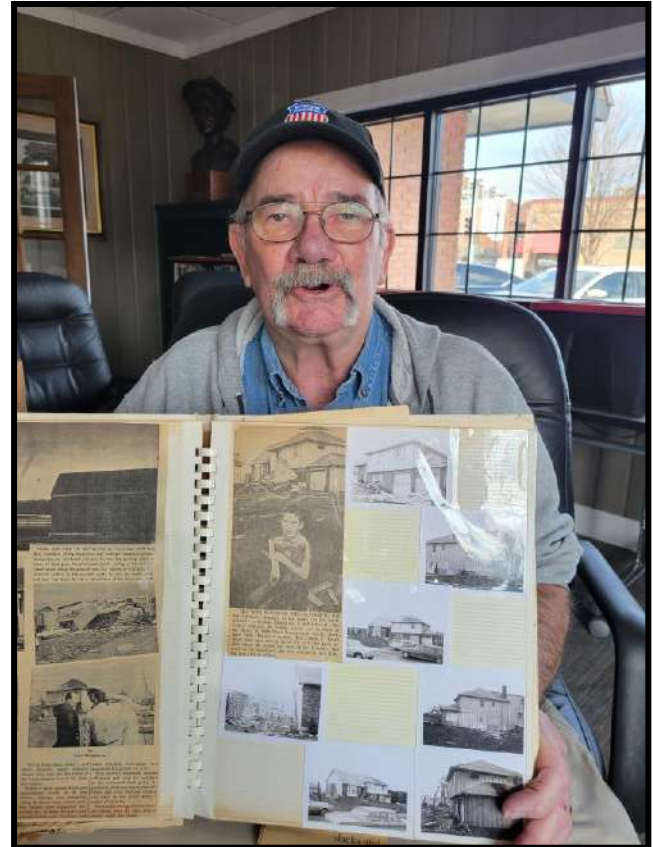


Woodstock subdivision resident, Richard Korek, took several photos of the destruction in the neighborhood. The Korek's home was among those extensively damaged.

# The Katherine Carpenter Tornado



**HIS TOYS SURVIVED THE BATTERING** that did extensive damage to his home (in the background), so Ronnie Bradshaw, 8, felt relieved. The twister toppled the family motor car in front of the home at 9809 West Ninety-six'h street, Overland Park. Ronnie's mother, Mrs. Allan E. Bradshaw, had just driven up in the car and gone inside when she heard the roar of the tornado. She went to the basement and was uninjured, and Ronnie was safe at school.



Ron Bradshaw, the young boy in the shown in the photo on the left, recently stopped in to Discover O.P. to donate his family's scrapbook about the tornado. Ron, who now lives in Springfield, Missouri, recounted the afternoon and the impact it had on the family. The Bradshaw's were among those who stayed at the Glenwood Manor Motor Hotel for several days after the event.

Notice in the left photo, Ron is clutching his G.I. Joe action figure. See the next two pages for some very interesting letters from Ron's scrapbook: a letter to Ron from the Hasbro Toy Company, makers of G.I. Joe, and a letter Ron's father typed to the Kansas City Times editorial board on Glenwood Manor stationery.

# The Katherine Carpenter Tornado



## HASSENFELD BROS., INC.

*Educational Toys and School Supplies*

P.O. BOX 1059, PAWTUCKET, RHODE ISLAND 02862

MERRILL L. HASSENFELD  
PRESIDENT

June 8, 1966

Master Ronny Bradshaw  
9619 Outlook  
Overland Park, Kansas

Dear Ronny:

All of us here at Hasbro saw your picture in the newspapers, and we were very, very sorry that your home had been so badly damaged by the tornado. We were deeply touched, too, Ronny, to see how much your G. I. Joe meant to you. It pleases us to know that G. I. Joe is not just another toy to thousands and thousands of young boys all over the country -- he is a real buddy.

Ronny, I'm sending you an official G. I. Joe jeep today, along with some of our new Foreign Soldiers. I hope that these items will bring you many hours of fun. I would have written to you sooner, but I have been away from my office a good deal lately on several business trips.

I hope that everything is going well for you and your family and that your home will soon be completely rebuilt. Best wishes to you from everyone as Hasbro!

Sincerely yours,

*Merrill Hassenfeld*  
Merrill L. Hassenfeld  
President

MLH:db

EXECUTIVE OFFICES 1027 NEWPORT AVENUE  
PAWTUCKET, RHODE ISLAND  
PAWTUCKET 6-4100

MAIN PLANT: 1027 NEWPORT AVENUE  
PAWTUCKET, RHODE ISLAND  
PAWTUCKET 6-4100

EMPIRE PENCIL COMPANY  
SHELBYVILLE, TENNESSEE  
PENCIL DIVISION - GRAPHITE DIVISION

NEW YORK OFFICE: 200 FIFTH AVENUE  
ROOM 1232-50  
ORegon 5-3467-B

A letter sent to Ron Bradshaw from Merril Hassenfeld, President of Hassenfeld Brothers Toy Company (better known as Hasbro).

# Glenwood Manor



**MOTOR HOTEL**



U. S. HIGHWAY 69 SOUTH AT 92nd STREET

POST OFFICE: OVERLAND PARK, KANSAS - TELEPHONE: MI 9-7000

April 22, 1966

The Editor  
The Kansas City Times  
Kansas City, Missouri

Dear Sir:

Your editorial of Thursday April 21 regarding "Our" tornado is just another case of the misinformed running off at the mouth before engaging the brain!

One must certainly agree that all of us that were involved were very fortunate for the lack of injuries, but when you wrote that it was primarily due to the civil defense siren alert and the retreat of the residents to their basements you were running off at the mouth again. The fact remains that there are no sirens in our hearing range and thereby no alert was heard even if it were sounded (which we doubt) and that many HAD NOT taken cover. These less fortunate persons were in kitchens, bedrooms and even included the twenty - two kindergarden children (one mine) who just barely had time to duck under tables on their upstairs floors in their house after their only alert was received by phone from one of the teachers husbands just as it hit!

As that fine gentleman, Mr. Morse, stated so well "I will never be able to look at twenty - two kindergarden children or their three marvelous teachers without shivering and thinking that WE FAILED to provide safety for them - GOD PROVIDED IT ALL!"

Frankly sir, when you and Mr. Meserve and their Civil Defense people blow and spout, taking credit for protection that did not exist, YOU MAKE ME SICK TO MY STOMACH. Maybe the Civil Defense group could hire some of those brave crossing patrol boys that went about alerting people in such a fine manner to DO THEIR JOB!

If you or any of the other fog horn boosters wish to join us on the edge of our foundations next week when they test these things you say, if you shut your mouth and listen closely, hear them blowing in the distance - - - - if the wind is right!

cc Marvin Rainey - Mayor

A. E. Bradshaw  
9809 W. 96th. Street

A letter dated April 22, 1966, and sent the editorial board of the Kansas City Times by Mr. A.E. Bradshaw. The letter, where Mr. Bradshaw takes exception to the board's reporting, was typed in his room at the Glenwood Manor Motor Hotel on hotel stationery.

# Historic Photos, Colorized

OPHS has recently been using computer applications to colorize our collection of historic Strang-era black and white photos. Enjoy these colorful transformations in this and future newsletters.



*Strang's Overland Park Depot, upon completion in 1906*



*Strang Car Barn, circa 1910, after completion of southern addition*

# Historic Photos, Colorized



The Santa Fe Trail Hall in its original location, north of depot and west of tracks.



The Santa Fe Trail Hall after relocation to east side of tracks.

# Vintage Ad From 1910

# OVERLAND PARK THIS YEAR'S OPENING

Commencing Saturday and  
Sunday, March 26 and 27



Do you realize that a new and beautiful Suburban City has been established at the very door of Kansas City? Come out and see for yourself what a year's development has accomplished. Overland Park is the highest and most sightly addition adjacent to Kansas City. With its many miles of streets, sewers, water, gas, electricity, schools, a bank, postoffice, general stores and low taxes it combines all the conveniences of a city with the joys and comforts of a country home.

**Every Lot Overlooks Kansas City**

## Moderate Payments if Desired

Watch for Our Sunday Advertisement.

### STRANG LAND CO.

Local Office—Overland Park

City Office—1121 Walnut St.

Take the "Strang Line" (Red Car) for Overland Park

# Vintage O.P. Advertisements From 1927



Your Car Deserves  
**THE BEST**

Ask For  
OPALINE OIL  
SINCLAIR GAS  
and  
ROAD INFORMATION  
**Jessup Filling Station**  
75th and Santa Fe Trail  
OVERLAND PARK, KAN.

When Motoring Thru Overland  
Stop at  
**Long's Modern Tourist  
Camp**

on 79th street  
Santa Fe Trail & Short Line  
Cabins, Garages, gas stoves, electric  
lights, shower baths, camping grounds,  
groceries, gasoline and oil, and auto sup-  
plies. Every comfort for the tourist.

## AT THE OVERLAND THEATER

OPEN SATURDAY, JULY 28th  
Under New Management

Redecorated and remodeled for the comfort  
of our patrons.

We will show only the latest and best pictures  
at all times!

Our regular admission price will be 10 and  
20 cents with a 15 cent family night, on Friday.  
On some pictures the producing companies will  
require us to make a slight raise on our admis-  
sion prices.

First Show at 7:30      Second 9:15

### SATURDAY, JULY 28th

Gary Cooper, Thelma Todd and William Powell in a fine  
Zane Grey western feature

"NEVADA"

Also a fine 2-reel comedy, "French Fried"

### MONDAY & TUESDAY, JULY 30-31

Clara Bow and BUDDY ROGERS, your own home boy in  
"GET YOUR MAN"

He was engaged to another girl 17 years, but Clara made him  
forget it in two hours. Also a good two-reel comedy, "Row, Sailor  
Row." Don't miss seeing this big program with two of the best  
stars in pictures.

### WEDNESDAY & THURSDAY, AUG. 1-2

Here's one to make you feel happy. Harold Lloyd in  
"SPEEDY"

Also Paramount latest news... Be sure and bring the family to  
see this fine comedy.

### FRIDAY, AUGUST 3

Family night, 10 & 15c

One of Bebe Daniels latest and greatest pictures

"SWIM GIRL SWIM"

also comedy, cartoon and 3rd chapter of "Isle of Sunken Gold"

## OIOLOGY

*Our P. Troleum*



NOVEMBER ELEVENTH

In our humble way, we dedicate this brief acknowledgement  
to the sacrifices made by our seventy thousand who neither heard  
nor rejoiced in the great victory of the war—fought that America  
might remain "the land of the free and the home of the brave."  
P. Troleum



Buy Sinclair Gas  
and Opaline Oil  
75th & Santa Fe Trail

**JESSUP'S  
SERVICE STATION**

# Vintage O.P. Advertisements From 1927

Map Showing Paved Highways into Overland Park, Kansas City's fastest growing suburb.

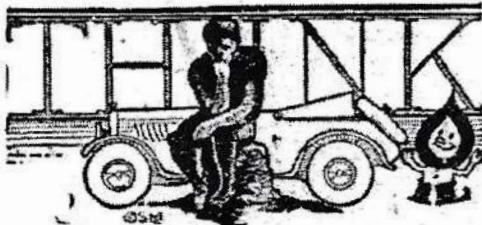
nearer the downtown district of Kansas City than is Swope Park.

12th St.  
Union Station  
Kansas Ave.  
Southwest Blvd.  
Broadway  
Country Club Plaza  
Roe Blvd.  
Shawnee-Mission Rural High School  
(To Merriam)  
Milburn Golf Club  
Bullock Sanitorium  
State Line  
Wornell Road  
Main Street  
75th Street (to Walden)  
Lincoln & Lee University  
Overland Park, Kansas  
Overland Park, Kansas  
"The Place to Live"

Overland Park, Kansas. Population 2,000 Greater Kansas City's fastest growing suburban community. Only twenty minutes from downtown. Nearer the union station than the front gate of Swope Park. A suburban community with every city advantage. City water, electric railway service, supplied with natural gas, electricity, excellent school facilities, four miles from the site of Lincoln and Lee university, paved streets and hard surfaced highways in all directions. "The Place To Live".

# Vintage O.P. Advertisements From 1927

## OILOLOGY *By P. Troleum*



"Tamper with the Carburetor—last."  
P. Troleum.

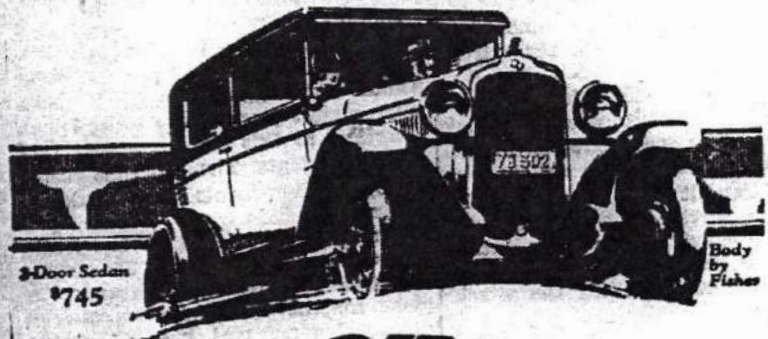
A thought in time may save nine—so when you're having motor trouble—think! It might be due to poor combustion—a little water or foreign matter in your gasoline. If this is the trouble it can be very happily remedied at once.

Drain your tank clean of all the gas you are now using, then fill up with Sinclair gas. This will give you new motor performance, that you'll like. Use Sinclair gas regularly!



### JESSUP'S SERVICE STATION

A SUCCESSFUL SIX NOW WINNING EVEN GREATER SUCCESS



# FASTER

*more Powerful than ever and  
enhanced in Style and Beauty*



To Pontiac's thoroughly proved design—to its 186 cu. in. engine and generously oversized vital units—to its numerous engineering advancements—Oakland has applied its policy of progressive engineering. Now this lowest priced General Motors Six provides the most impressive performance ever achieved in a car of comparable price. In addition, the car's beauty has been enhanced by the added smartness of smaller wheels and over-sized tires. Improved in performance and appearance, built in a great new plant with unsurpassed facilities—today's Pontiac Six is more than ever the value leader of its field. Drive it—and discover this truth for yourself!

Coupe, \$745; Sport Roadster, \$745; Phaeton, \$775; Cabriolet, \$795; 4-Door Sedan, \$825; Sport Landau Sedan, \$875. Oakland All-American Six, \$1045 to \$1265. All prices at factory. Check Oakland-Pontiac delivered prices—they include lowest handling charges. General Motors Time Payment Plan available at minimum rates.

OVERLAND PARK MOTORS  
H. F. WEBER Phone 13 J. F. SHEPERS

# PONTIAC SIX

PRODUCT OF GENERAL MOTORS

# Then & Now



1960



2026

**Santa Fe Drive, looking north from 81st St.**

**Remembering Hazel Steffen (July 2000)**

I owned the Memory Lane Shop at 3949 Main in Kansas City, Missouri, from 1951 to 1961. At that time there were only two nighttime shopping areas - - Main Street and 31<sup>st</sup> & Troost. Both were open until 9 p.m. every evening including Saturday.

In 1961 I purchased the Overland Card & Gift Shop at 7946 Santa Fe and moved my inventory into the new location. I had a tremendous variety and wide range of prices that set my shop apart from gift departments in larger stores. I took pride in friendly service and individuality in my shop. I was blessed with good help – honest, dependable ladies who worked for me. I had many faithful repeat customers.

I saw a lot of changes in Johnson County in the 18 years I operated the store. In 1961 there wasn't much south of 83<sup>rd</sup> Street. When I moved my residence to Overland Park in 1964, purchasing a duplex near 95<sup>th</sup> & Bluejacket, my friends exclaimed, "You're out in the country!" There was no Metcalf South of Oak Park malls.

As a businesswoman I was active in the Downtown Overland Park Business Association, serving several times as secretary and treasurer. I was invited to be a member of the Zonta Club and an active member of the Lenexa United Methodist Church.

In January of 1979 I sold my shop to Lois Thayer who then sold it five years later to Keith and Diane Holy. In January 2000, the building was sold to a group of lawyers, and that ended the history of my gift shop.



Overland Cards & Gifts, 7946 Santa Fe Drive, circa 1974. The store was one of three tenants at that time occupying the historic Voigts Building.

## Remembering Hazel Steffen

### Hazel M. Steffen

1916-2008

LENEXA, Kan. — Hazel Marguerite Steffen, 92, Lenexa, formerly St. Joseph, passed away Saturday, May 17, 2008.

Hazel was born in Avenue City, Mo., on Jan. 27, 1916, to George and Bertha Steffen and lived in St. Joseph until moving to Kansas City, Mo., in 1941.



She was employed by School-ey Printing and Stationery Co. until she purchased Memory Lane Gift Shop in Kansas City. Later she moved her business to Overland Park, Kan., where she owned and operated the Overland Card and Gift Shop until she retired in 1979.

Hazel was a charter member of Zonta International, a service organization for women in business and professions; lifetime member of the Overland Park Business Association; member of the Lenexa United Methodist Church and active in the church women's circle.

After retiring, she volunteered at Overland Park Regional Medical Center for 17 years.

She was preceded in death by her parents; and a brother, George.

Survivors include a brother, Awalt G. Steffen, and sister-in-law, Helen E. Steffen, both of St. Joseph.

*Come in and Browse . . .*  
Lots of new merchandise for fall and holiday shopping. Use our lay-away plan. One Table of Items at Bargain Prices.  
**Hazel Steffen's  
Overland Card & Gift Shop**  
7946 Santa Fe NI 2-4110

 **A SHOWER OF FLOWER VALUES**  
*Artificial Flowers*  
**DRASTICALLY REDUCED!**  
at  
**HAZEL STEFFEN'S SHOP** 7946 Santa Fe Dr.  
NI 2-4110

**Overland Card and Gift**  
Visit Hazel Steffen for gifts for father.  
Buxton billfolds, barbeque items. Cards  
and gift wrap. 7946 Santa Fe, 642-4110



Today, the Voigts Building is home to Shockey Consulting & Art Studio (photo taken in April 2026)

# TOP EVENT SCHEDULE

**Strang Hall's Beer Fest | June 6**

**Car Show | June 11**

**Art Fair | June 12–13**

**World Cup Watch Party at The New Pavilion | June 16**

**Sidewalk Sale | July 9**

**World Cup Watch Party at The New Pavilion | July 11**

**Red Wednesday | September 2**

**Red Friday | September 4**

**Movie Night in the Park | September 12**

**Fall Festival | September 25–26**

**Harvesting for Hope at Strang Hall | October 1**

**Halloween Event | October 24**

**Mayor's Holiday Festival | November 20**

**Small Business Saturday | November 28**

**Santa in Downtown OP | December 5**

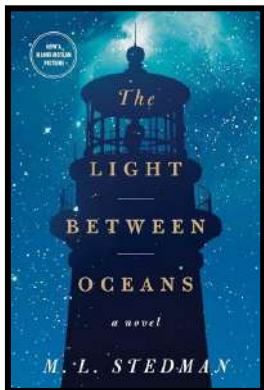
**Hayride at Clocktower Plaza | December 17**

## Calling Committee Thank You!

The OPHS Board of Directors would like to give a heartfelt “thank you” to the members of the Calling Committee. This committee, under the leadership of Peggy Lee, helps to keep our members informed of upcoming meetings and events. We recognize the following volunteers for their efforts and appreciate all that you do for OPHS:

- Barbara Comer
- Karen Dillavou
- Elaine Gilbert
- Sheryl Gulley
- Pat Haguewood
- Alice Hawk
- Judy Keeling
- Patricia Martin
- Janet Noonon
- Rita Thomson
- RuthAnn Troop
- Myrna Vardeman

# Spring Book Club Concludes in May



**Tuesday, May 19 - 7 p.m.**  
**The Light Between the Oceans**  
by M.L. Stedman  
Speaker – Erin Pouppirt

**Books are now available for check out at Discover O.P. – 8001 Santa Fe Drive.**

We will need your financial support to keep this program thriving. Your donations will ensure that we can continue to foster connections through literature and provide invaluable experiences for our community. Let's come together to keep the pages turning and the discussions lively!

If you have any questions about the book club, please contact Pat Crabtree at (913) 523-4784 or by email at [vpTREE123@yahoo.com](mailto:vpTREE123@yahoo.com).

**All book club meetings are held at Discover O.P. – 8001 Santa Fe Drive.**



## Overland Park Civic Band

### SUMMER CONCERT SERIES

- Sundays, June 7, 14, 21 and 28 at the Indian Creek Rec Center (103<sup>rd</sup> & Marty St.)
- Sundays, July 5 (Patriotic Concert) and July 12 will be held at Thompson Park in Downtown O.P.
- All concerts begin at 7:00 p.m.

---

Andrew Yates, Conductor  
Jerry Gipson, Associate Conductor

---

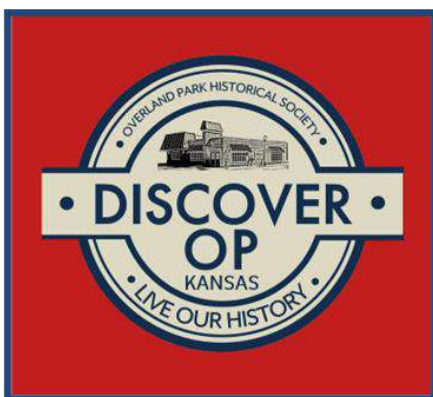
Donations Welcome  
Free Admission

# Podcast with Frank & Sarah Boal :



Last March, OPHS Executive Director, Brad Moore, was invited by former television sportscaster, Frank Boal, to be interviewed for an episode of his weekly podcast called *There's Just Something About Kansas City*. During the hour-long episode, Frank and his wife Sarah (one of Brad's grade school friends) ask Brad questions about the founding of Overland Park. There is plenty of nostalgic reflections, too, as Brad and Sarah recall the places of their youth that will be forever etched in their memories. It is a fun and fast sixty-minute program. If you would like to watch the episode, click on the link below:

[Brad Moore: The Surprising History of Overland Park & Johnson County's Hidden Stories](#)



**Overland Park Historical Society**  
**8001 Santa Fe Drive**  
**Overland Park, KS 66204**

Phone: (913) 381-8867

Hours:

Wednesday - Friday: 1:00 – 5:00 p.m.

Saturday: 10:00 a.m. – 2:00 p.m.

Sunday - Tuesday: Closed

Web: [www.ophistorical.org](http://www.ophistorical.org)

Email: [info@ophistorical.org](mailto:info@ophistorical.org)

