



## October 2, 2016 Update on New Church

# **Approved Motions from June 26, 2016 Congregational Meeting**

---

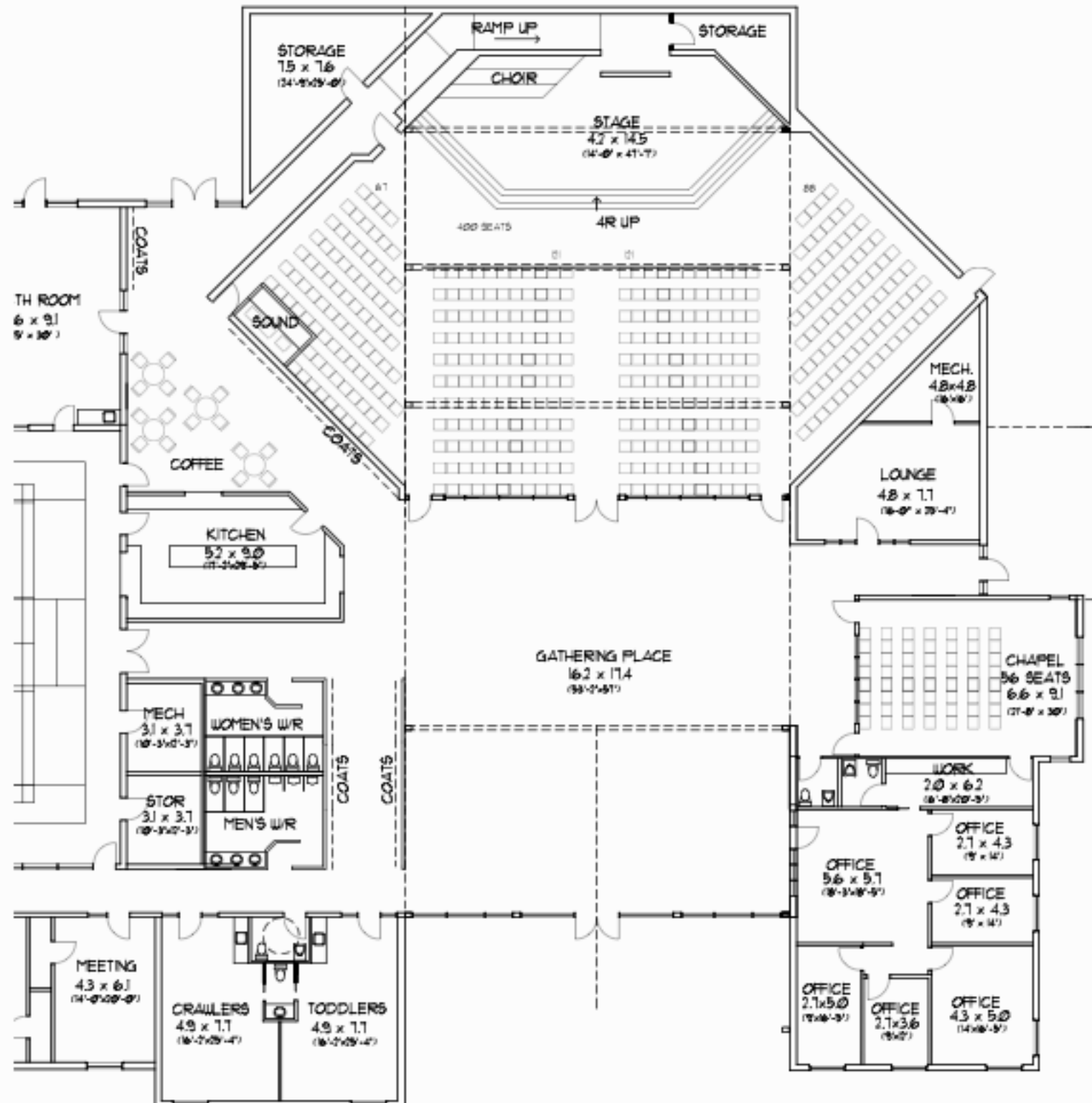
## **Motion #1:**

- Build the full and completely finished 15,985 sq. foot church (including the kitchen, gathering place, sanctuary, chapel and offices, outlined in latest architect's drawing)
- Acquire a mortgage of up to \$1.85 million
- Direct the building committee to do a current needs assessment and report back to the congregation by October 1st
- Direct the building committee to hire a project manager
- Direct the building committee to move forward with getting building quotes from builders

## **Motion #2:**

- Charter the Finance Team to reach out to interested individuals, either in the Congregation or greater Georgetown Community, to become founding members of a Not-for-Profit Foundation to build and operate the gym space (as outlined in the latest architects drawings).
- Approval to proceed to incorporate the Foundation and any updates and changes to the gym and meeting room space will have to be brought back to the Executive for approval.

# Interior Floor Plan as of June 2016



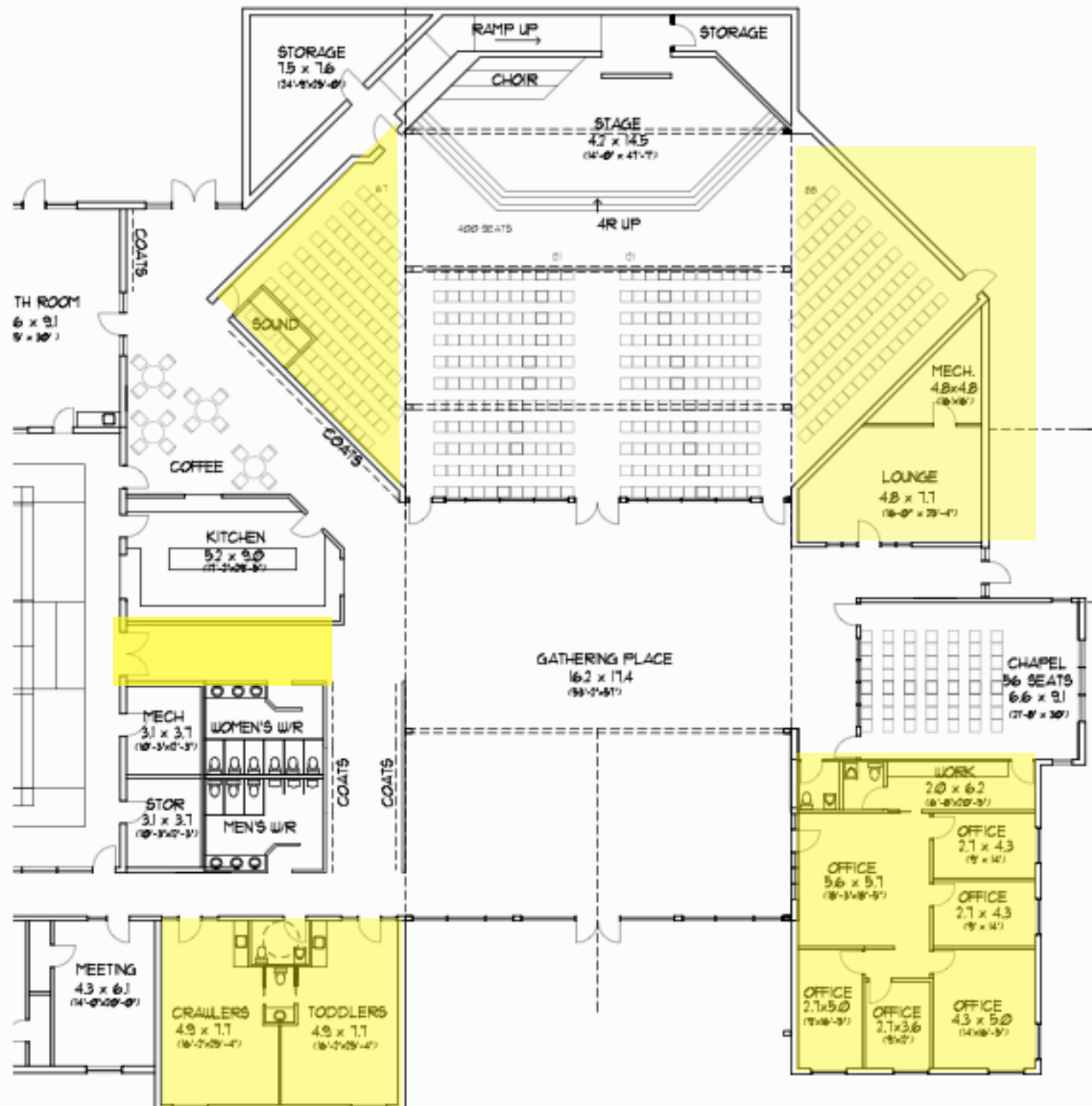
# Current Needs Assessment Process

---

- Formed a small current needs assessment team:
  - Jan Arnold
  - Janet Laven
  - Bruce Cunningham
  - Paul Ivany
  - Trevor Leathem
- Met on July 11th to address the following areas of concern from the congregation:
  - Size of the sanctuary
  - Need for a chapel
  - Storage space
  - Availability of meeting rooms
- Met on July 25th with the architect to consider the following changes to the interior layout:
  - Partition the two wings of the sanctuary and use the centre rectangle portion (seats approx. 242 people) for regular worship. The wings could be used for storage.
  - The AV/sound booth, currently in the left wing, will be moved closer to the main sanctuary.
  - The lounge could be multifunctional, meeting space as well as the youth room
  - The chapel could also be meeting space, more multi-functional with chairs rather than the pews from our old building as was first planned.
  - There is enough space in the toddler room to accommodate the crawlers as well, so that room will be dedicated for both these groups. The original crawler room can be used as teaching space for the Grade 1 to 5 age group
  - The main office will also be a reception area where Beverly will work. We can make two meeting rooms from the three small offices at the front by removing one wall. The remaining two small offices will be dedicated for Paul and a youth minister.
  - These changes would be temporary and could be changed back to the original plan once the gym portion is built.
  - Create some lockable cupboard storage space for the crawler/toddler and grade 1-5 rooms.



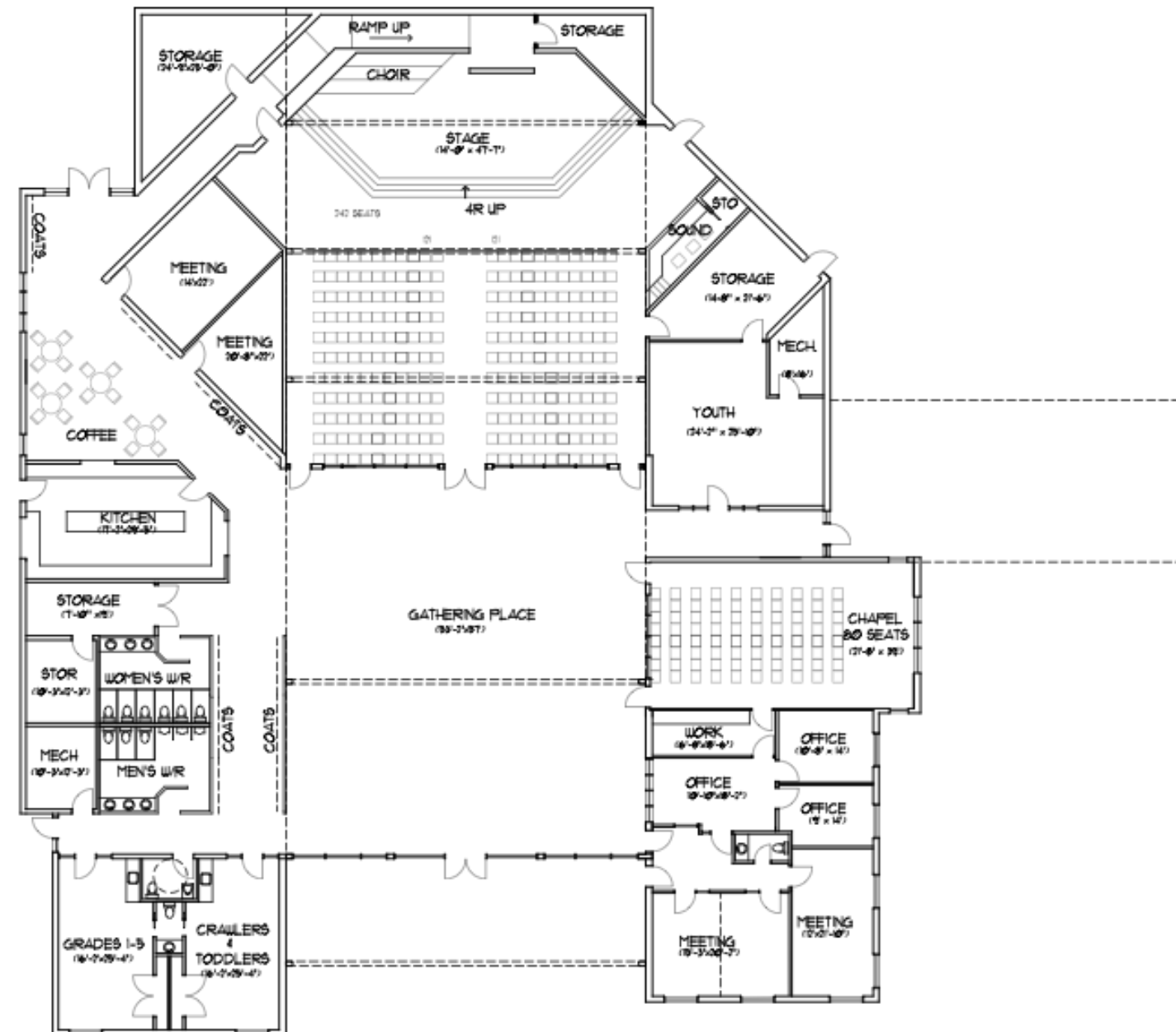
# Areas Reviewed by Assessment Committee



# Result of Current Needs Assessment

## FINAL PLAN

FLOOR AREA 15,585 sq.ft.

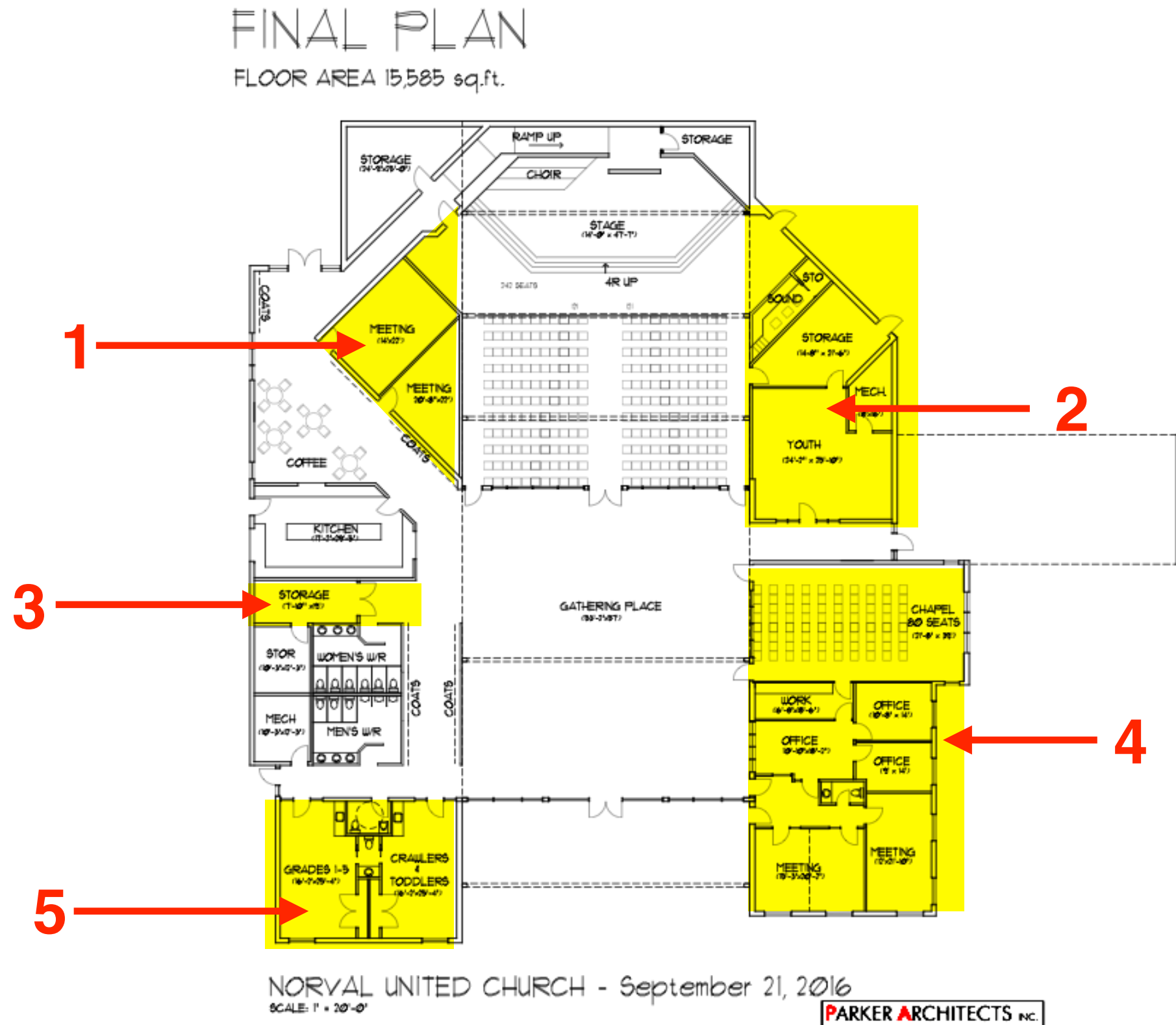


NORVAL UNITED CHURCH - September 21, 2016

SCALE: 1" = 20'-0"

PARKER ARCHITECTS INC.

# Changes to the June 2016 Layout



# Changes to the June 2016 Layout continued

---

## Notes on keys in previous slide:

1. Previous seating for 100 people replaced with 2 temporary meeting rooms. AV booth moved to RH side of sanctuary.
2. Previous seating for 73 people plus a lounge area now replaced with Youth Room and temporary Storage room. AV booth relocated to this area.
3. Passageway from sanctuary to gymnasium converted to temporary storage area.
4. Multiple changes:
  - a. LH wall of chapel moved to be flush with inside wall of office area. Chapel capacity now 80 from previous 56. However, chapel will have flexible seating enabling multi-functional usage.
  - b. Previous 6 office spaces now converted to 3 offices (reception/church secretary, two ministers) and 3 meeting rooms.
  - c. Washroom relocated for access from meeting rooms without need to pass through offices or sanctuary.
  - d. Exterior side door inserted to enable access to meeting rooms without need to access to sanctuary or offices.
5. Multiple changes:
  - a. Toddlers and Crawlers rooms now combined.
  - b. Previous Crawlers room now assigned to Grades 1-5.
  - c. Lockable storage cupboards added to both rooms.

## Summary of changes:

- a. Initial sanctuary size will be 242 seats expandable over time to 415 seats as the needs of the congregation grow.
- b. Youth room now located in the church but could be moved to the gymnasium area at a future date if appropriate.
- c. Chapel is now a multi-functional space with flexible seating for 80 people.
- d. 5 meeting rooms now available for church and community groups, compared to 6 originally planned for the gymnasium building.
- e. Significant increase in initial storage space.



# **Update on Foundation Activities**

# Progress with the Foundation

---

- A number of sports organizations have been contacted with respect their interest in participating in a non-profit organization to build and operate Phase 2 of the project.
- The Finance Team has contracted with Beatrice Sharkey, the Executive Director of the Halton Hills Cultural Roundtable, who has experience in dealing with Halton Hills Community Organizations and Agencies, to help the team determine the best governance and partnership model for the construction of Phase 2 Build.
- Beatrice has had meetings with the Finance Team and is developing a strategy for approaching and developing ties with potential partners, both public and private, with respect to Phase 2. That strategy will also include further consideration of potential users of space in Phase 2.
- This work with Beatrice is running in tandem with our work on building Phase 1.