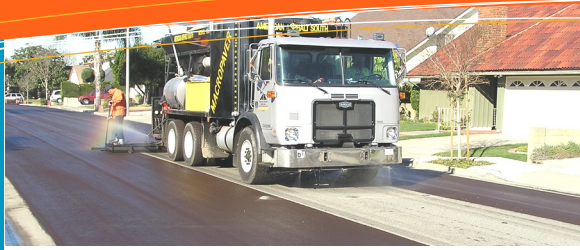




CONSTRUCTION NOTICE



PROJECT INFORMATION

The City Council has allocated Gas Tax, Measure A, Landscape & Lighting Districts, and Measure T funding for the street rehabilitation of various residential streets and parking lots at City facilities and parks. This project will provide a protective coating for the streets and parking lots and is designed to seal and extend the life of the pavement.

PROJECT DURATION

Work is scheduled to begin in late October and will take approximately 6 months to complete and is dependent on weather conditions. Hours of construction will be from 7:00 a.m. to 4:30 p.m. for residential areas, Monday through Friday. Every opportunity to minimize the impact to Murrieta residents will be taken.

CONTACT INFORMATION

To ensure open lines of communication with businesses and residents, the City's contractor has designated a project manager to handle all aspects of the project. To ensure quick response to your comments and concerns please call:

CONTRACTOR
AMERICAN ASPHALT SOUTH
(909) 427-8276

CITY OF MURRIETA
(951) 304-CITY (2489)

Project Maps, Streets List
and Updated Schedules can
be found at:

www.MurrietaCA.Gov/streets

2019 CITYWIDE SLURRY SEAL PROJECT

What is the purpose of this project?

The City is implementing a residential street maintenance program which will see City-maintained residential streets coated with a slurry seal every 5-7 years. The City is beginning the program by applying slurry seal to approximately 19 million square feet of pavement (about 50% of all City-maintained residential streets).

Your street will receive a slurry seal during this initial phase of the program. A slurry seal coating will protect the asphalt and subgrade from water damage and help to extend the life of the existing pavement. Slurry seals are typically used for streets in fair condition and when expensive reconstruction and asphalt overlay methods are not warranted. Prior to slurry sealing, various cracks will be sealed and areas of failed asphalt will be repaired. All striping and pavement markers will be replaced.

What is the scope of the project?

This project includes sealing various cracks, repairing areas of failed asphalt, slurry sealing of the pavement, and restriping.

How will I be affected?

The City is requesting the assistance and patience of all residents to help make this project a success! Please follow the instructions of all parking

On the day of the slurry seal, residential streets may be closed entirely to all vehicles. Some streets will be slurry sealed in stages to allow for through access at all times. We request that you refrain from parking on the streets the day of the slurry seal and do **NOT** drive on the slurry seal until it cures (about 4 hours after it is applied). In most instances, streets will be reopened by 5:00 p.m. each day. Also, please avoid running your sprinklers the night before or the day of the resurfacing if any water will run off your property into the street.

What about parking?

No Parking signs and notices with the exact date of a street closure will be posted adjacent to the areas of work at least 72 hours in advance of the work. If unexpected delays occur, the new date will be posted at least 72 hours prior to the rescheduled date.

What can I expect from the slurry seal?

When the slurry seal is applied, it is a light brown color due to the chemical reactions and the temperature of the mix. As the mix becomes exposed to heat and sunlight, it will begin to turn black. The rough appearance of a slurry seal is not that of a new street; however, this does not affect the quality of the slurry seal as it is not a structural or aesthetic improvement.

Even after the streets are open, it takes several months for the slurry to completely cure. Because of this, normal driving on recently slurried streets may cause some tire tracks (especially at the ends of cul-de-sacs), or gouges from turning wheels while your car is not moving. While this will affect only the appearance of the streets, and many times is unavoidable, much of this will disappear with time and traffic.

Will there be changes to the schedule?

Scheduling a project of this type may require frequent changes. The City and the Contractor will make every effort to minimize impacts to the community and to keep the project on schedule. However, in the event of changes in the schedule of construction activities, the community's cooperation will be greatly appreciated.

What about emergency vehicle access, trash pickup, street sweeping, school bus schedules, delivery services?

The City will be communicating and coordinating with all stakeholders to ensure the least amount of interruption of service possible. Work will be coordinated with the City's trash hauler to allow for normal trash pickup operations. Please be sure to remove trash bins promptly so scheduled slurry is not delayed. Street sweeping will be suspended during the slurry seal to allow for the street to properly cure.



Partially funded by Measure T
Strengthening our City