

FINAL SAMPLING REPORT WIIN GRANT LEAD TESTING PROGRAM

ST. JAMES EPISCOPAL EARLY CHILDCARE DEVELOPMENT CENTER

460 Florida Street, Baton Rouge, Louisiana 70802
East Baton Rouge Parish



Prepared for:

Caryn Benjamin
LDH-OPH, Engineering Services
628 N. Fourth Street
P.O. Box 4489
Baton Rouge, LA 70821



Prepared by:

**Matrix New World Engineering, Land Surveying
and Landscape Architecture, PC**
2798 O'Neal Lane, Building F
Baton Rouge, LA 70816
225.292.3271 973.240.1800
matrixnewworld.com WBE

MATRIX**NEW****WORLD**
Engineering Progress

Date:

October 21, 2022

Matrix Project No.: 22-0097

TABLE OF CONTENTS

1.0 INTRODUCTION	1
1.1 Background	1
1.2 Purpose and Scope	2
1.3 Facility Information	2
2.0 ASSESSMENT ACTIVITIES AND SAMPLING PLAN	3
2.1 Initial and On-site Interviews	3
2.2 Assessment Findings and Sampling Plan	3
3.0 SAMPLING EVENT	4
3.1 Procedures	4
3.2 Summary of Sampling Event	4
3.3 Laboratory Analysis	5
4.0 SAMPLE RESULTS	6
5.0 REMEDIATION AND RESAMPLING	8
6.0 OTHER RECOMMENDATIONS	10
6.1 Implement Routine Practices	10
7.0 CONCLUSIONS	11
8.0 ADDITIONAL INFORMATION AND RESOURCES	12
9.0 SIGNATURES	13

TABLES

Table 4.1	Sample Results
Table 5.1	Fixtures over the lead action level (15 ppb)
Table 5.2	Fixtures over the program remediation trigger (10 ppb)

APPENDICES

Appendix A	Facility Maps
Appendix B	ID Codes and Abbreviations
Appendix C	Fixture Identification Photos

ATTACHMENTS

Attachment 1	Analytical Laboratory Reports
Attachment 2	Establishing Routine Practices

1.0 INTRODUCTION

On behalf of the Louisiana Department of Health (LDH), Matrix New World Engineering, Land Surveying and Landscape Architecture, PC (Matrix) has prepared this Final Sampling Report (the Report) for the St. James Episcopal Early Childhood Development Center (the Facility). Matrix developed the Report following assessment and sampling of water sources used for consumption at the Facility to determine the potential presence and concentration of lead in drinking water.

This Report provides a summary of the activities performed by Matrix, the results of the analytical testing, and recommendations to the Facility as a result of the analytical results.

1.1 Background

Lead is a naturally occurring element with some beneficial uses, but it can be toxic to humans and animals. Lead can be found in the air, soil, water, and in other materials (e.g. paint, batteries). Lead was a common material used in plumbing materials for many years and can enter drinking water through corrosion. According to the Environmental Protection Agency (EPA), the most common sources of lead in drinking water are lead pipes, faucets, and fixtures. Lead service lines are more likely to be found in buildings built before 1986. Among buildings without lead pipes, the most common sources of lead in drinking water are brass or chrome-plated brass faucets and plumbing with lead solder (melted metal or alloy used to join pieces of metal). Additionally, some drinking water fountains with lead-lined tanks and other plumbing fixtures not intended for drinking water (e.g. hoses, spigots, hand washing sinks) may also be sources of lead in drinking water. The amount of lead that enters drinking water from these sources is affected by many factors, including: the chemistry of the water, the amount of lead the water is in contact with, the temperature of the water, the amount of wear in the pipes, how long water stays in the pipes, and the presence of protective scales or coatings inside the plumbing materials.

The Safe Drinking Water Act requires EPA to determine the level of contaminants in drinking water at which no adverse health effects are likely to occur with an adequate margin of safety. EPA has set the maximum contaminant level goal for lead in drinking water at zero because lead is a toxic metal that can be harmful to human health even at low exposure levels. EPA also set an action level for lead in drinking water at 15 parts per billion (ppb). Lead is persistent, and it can bioaccumulate in the body over time.

According to the Center for Disease Control and Prevention (CDC) and the EPA, young children, infants, and fetuses are particularly vulnerable to lead because the physical and behavioral effects of lead occur at lower exposure levels in children than in adults. In children, low levels of exposure have been linked to damage to the central and peripheral nervous system, learning disabilities, shorter stature, impaired hearing, and impaired formation and function of blood cells. The most important step in protecting children from these effects is preventing lead exposure before it occurs by removing lead hazards from their environment.

The EPA has determined even when water entering a facility meets all federal and state safe drinking water standards for lead, older plumbing materials in schools and child care facilities may contribute to elevated levels of lead in drinking water. Additionally, due to the intermittent water use patterns, schools and child care facilities are more likely to have a higher potential for lead to enter drinking water as water remains in contact with lead plumbing materials for longer. However, the only way to know if lead is present in drinking water is to test.

In order to help schools and child care facilities implement a voluntary program to reduce lead in drinking water, the EPA developed a guide for training, testing, and taking action called the 3Ts for Reducing Lead in Drinking Water in Schools and Child Care Facilities (the 3Ts). The 3Ts manual was revised in 2018 and provides information and resources to assist schools and child care facilities in identifying potential problems, implementing targeted remediation efforts, and communicating with parents, teachers, and the public. The EPA also developed a toolkit of resources to support the 3Ts. The 3Ts manual and toolkit can be found at <https://www.epa.gov/ground-water-and-drinking-water/3ts-reducing-lead-drinking-water>.

The Water Infrastructure Improvements for the Nation Act or “WIIN Act” of 2016 authorized the EPA to award grants to states for providing voluntary testing for lead in drinking water at eligible schools and child care facilities. The LDH administers the WIIN Grant Lead Testing Program for Louisiana and offers free lead testing in drinking water at eligible schools and child care facilities. This program includes outreach and education on lead exposure risks in drinking water, facility assessments and water sampling, lead analysis, and remediation guidance in accordance with the 3Ts. Participation in the program is voluntary and requires that eligible schools and child care centers submit an application to LDH for approval. Once tested, schools and child care facilities are required to make the lead test results publicly available and notify parents and teachers/employees of the availability of the results.

1.2 Purpose and Scope

Matrix, as a contractor for LDH, assessed the sources of water used for consumption at the Facility and developed a Sampling Plan. A summary of the assessment activities and Sampling Plan is included in Section 2 below. The Sampling Plan was approved by LDH, and Matrix conducted sampling at the Facility in accordance with the EPA’s 3Ts for Reducing Lead in Drinking Water in Schools and Child Care Facilities. A summary of the sampling event is included in Section 3 below. Upon receipt of the laboratory analytical reports (**Attachment 1**), Matrix reviewed the results and notified LDH and the Facility within 24 hours of an exceedance of the lead action level (15 ppb). Based on the results of the lead sampling and any other issues identified during the assessment or sampling activities, Matrix has developed recommendations and/or remediation guidance for the Facility as outlined in Sections 5 and 6.

1.3 Facility Information

St. James Episcopal Early Childcare Development Center, a child care facility, is located at 460 Florida Street in Baton Rouge, East Baton Rouge Parish, Louisiana. The facility is owned and operated by St. James Episcopal Church and is co-located with the Church and the St. James Episcopal Day School. The facility was built in 1960 and underwent a plumbing modification in 2019. The facility is located in a two-story building known as the Killgore Building (K). The second story of the Killgore Building was unfinished and not in use at the time of the assessment. The facility provides meals from the kitchen located in the Atkinson Building (A). For the purposes of this Report, only the fixtures accessible by children attending the child care facility were assessed and sampled.

2.0 ASSESSMENT ACTIVITIES AND SAMPLING PLAN

Initial assessment and investigation of the Facility was performed on June 1, 2022, in accordance with the EPA's 3Ts for Reducing Lead in Drinking Water in Schools and Child Care Facilities. During the assessment, Matrix surveyed the Facility buildings to identify each potential source of water used for consumption. Based on fixture type, location, and use, Matrix determined which fixtures were appropriate to sample in accordance with the EPA and LDH guidance.

2.1 Initial and On-site Interviews

On June 1, 2022, Matrix staff met with Director of Operations, Jacques Pourciau. Information gathered during the initial interviews and discussions during the assessment includes the following:

- The water main enters the Killgore Building on the main front corner near the playroom (118).
- Meals are served in the classrooms, and the child care facility children do not use the cafeteria in the Atkinson Building.
- All fixtures and some plumbing materials were replaced in the Killgore Building in 2019 during a renovation.

2.2 Assessment Findings and Sampling Plan

As a result of the assessment, Matrix identified 31 total fixtures that may be a source of water used for consumption by the child care facility students. Matrix did not identify any water coolers banned by EPA at the Facility. Each fixture was assigned a specific fixture ID using the following method:

(Building) - (Floor) – (Room # or Name) – (Fixture Type and Location)

Facility maps indicating the fixture locations are included in **Appendix A**, and a list of codes and abbreviations used in the fixture and sample IDs is included in **Appendix B**.

After review of the fixture information, Matrix determined some fixtures were not applicable to the program and/or did not pose a risk of consumption. As a result of this evaluation, Matrix concluded 22 fixtures at the Facility should be sampled.

Matrix submitted the Sampling Plan to LDH on June 8, 2022, and it was approved by LDH on June 10, 2022.

3.0 SAMPLING EVENT

Following LDH's approval of the Sampling Plan, Matrix coordinated with facility representatives to schedule the sampling event. Matrix conducted sampling at the Facility on October 6, 2022, in accordance with the sampling guidance provided in the EPA's 3Ts for Reducing Lead in Drinking Water in Schools and Child Care Facilities and in guidance from LDH.

3.1 Procedures

Matrix ensured, through scheduling and communication with facility representatives, that the water was unused in the Facility's pipes/fixtures for a minimum of eight, but not more than eighteen hours prior to initiating sampling. Additionally, Matrix ensured that first-draw samples were collected before the facility opened and before any water was used at the Facility.

All samples were collected in a 250 milliliter (mL) wide-mouth bottle utilizing a two-step process*.

- Step 1- First Draw or Primary Samples (P) - This sample was collected immediately after opening the faucet/valve without allowing any water to go to waste. A clean plastic funnel was used for taps with spray nozzles.
- Step 2- Flush Samples (F) - This sample was collected after running (flushing) the water for 30 seconds.

* Only one sample was collected from the ice machine utilizing a gloved hand to place the ice into the sample bottle.

Matrix began the sampling event in the Facility's kitchen. All first draw and flush samples were collected in the kitchen prior to sampling any other areas of the facility. Following the kitchen samples, Matrix began collecting first draw samples of the other fixtures in the area closest to where the water main enters the facility and working away from that point. After first draw samples were collected, Matrix collected the flush samples utilizing the same pattern.

Matrix noted the time of each sample on the laboratory chain-of-custody forms included in **Attachment 1**. Sample bottles were packaged according to the sampling guidance.

3.2 Summary of Sampling Event

Matrix conducted sampling of the Facility on October 6, 2022. Matrix collected samples according to the approved Sampling Plan.

Matrix ultimately sampled a total of 22 fixtures. Of these, primary and flush samples were collected for 21 fixtures and one sample was collected for the ice machine. Each sample was identified using the fixture ID plus "P" or "F" for primary or flush.

(Building) - (Floor) – (Room # or Name) – (Fixture Type and Location) - (Primary/Flush)

A comprehensive list of the fixtures sampled and the sample results is included in Table 4.1. Facility maps indicating the fixture locations are included in **Appendix A**.

3.3 Laboratory Analysis

Samples collected by Matrix were submitted to Waypoint Analytical (Waypoint). Waypoint is certified by the LDH Office of Public Health as a chemical laboratory/drinking water, a laboratory meeting the requirements contained within the laboratory certification regulations (LAC 48:V.Chapter 80). Waypoint analyzed the samples for lead using the EPA Method 200.8 and a Reporting Limit of 0.500 micrograms per liter ($\mu\text{g/L}$).

4.0 SAMPLE RESULTS

Matrix received the final laboratory analytical report on October 17, 2022. Matrix reviewed the results and notified the School and LDH within 24 hours of receipt of a result exceeding the lead action level of 15 parts per billion (ppb) (15 µg/L). A summary of the results is included in Table 4.1 below. Discussions of recommended remediation are in Sections 5.0 and 6.0.

Sample results were reported by the lab in micrograms per liter (µg/L) which is equivalent to parts per billion (ppb).

Samples exceeding the lead action level of 15 ppb (15 µg/L) are shaded red and sample results exceeding the Louisiana program remediation trigger of 10 ppb (10 µg/L) are shaded yellow.

Buildings at the Facility are identified in the Fixture ID column as: A (Atkinson Building) and K (Killgore Building). Facility maps indicating the fixture locations are included in **Appendix A**, and a list of codes and abbreviations used in the fixture and sample IDs is included in **Appendix B**.

TABLE 4.1 SAMPLE RESULTS

Fixture ID	Location	Fixture Type	Primary Sample (ppb)	Flush Sample (ppb)
A-1-KIT-KF(1)	Kitchen	Faucet	1.87	1.41
A -1-KIT-IM	Kitchen	Ice Machine	0.647	-
A -1-KIT-KF(3L)	Kitchen	Faucet/ Spray Nozzle	1.79	1.43
A -1-KIT-KF(4M)	Kitchen	Faucet	2.72	2.05
A -1-KIT-PF(fixed)	Kitchen	Pot Filler	15.5	4.09
A -1-KIT-PF(swing)	Kitchen	Pot Filler	14.2	2.95
A -1-KIT-KF(5M)	Kitchen	Faucet	2.86	*
A -1-KIT-Tea	Kitchen	Tea Maker	2.78	2.76
K-1-118-CF(L)	118 Classroom	Faucet	1.98	1.63
K-1-118-CF(R)	118 Classroom	Faucet	1.69	1.69
K-1-Ext120-WC(L)	Exterior Play Area 120	Water Cooler	1.13	1.55
K-1-111-F	111 Staff Breakroom	Faucet	1.65	1.80
K-1-100-CF(L)	100 Classroom	Faucet	2.12	1.71
K-1-100-CF(R)	100 Classroom	Faucet	2.06	1.82
K-1-102-CF(L)	102 Classroom	Faucet	1.95	1.79

Fixture ID	Location	Fixture Type	Primary Sample (ppb)	Flush Sample (ppb)
K-1-102-CF(R)	102 Classroom	Faucet	2.13	1.84
K-1-104-CF(L)	104 Classroom	Faucet	1.80	1.91
K-1-104-CF(R)	104 Classroom	Faucet	2.22	1.70
K-1-106-CF(L)	106 Classroom	Faucet	1.78	1.77
K-1-106-CF(R)	106 Classroom	Faucet	2.21	1.76
K-1-108-CF(L)	108 Classroom	Faucet	2.09	2.01
K-1-108-CF(R)	108 Classroom	Faucet	1.97	1.97

* After receiving the samples, the lab notified Matrix that the flush sample for fixture A-1-KIT-KF(5M) was not received although it was collected and noted on the chain-of-custody form.

5.0 REMEDIATION AND RESAMPLING

One sample collected from the fixtures listed in Table 5.1 was greater than the lead action level, 15 ppb (15 µg/L). Matrix notified the Facility and LDH within 24 hours of receipt of the final sample results for this fixture. Matrix also provided the Facility with LDH-approved remediation actions for the applicable fixture(s). Specifically, Matrix recommended the fixture below be immediately removed from service until further action could be implemented. **Appendix C** includes photo identification for the fixture listed in Table 5.1.

TABLE 5.1 Fixtures over the lead action level (15 ppb)

Photo No.	Fixture ID	Primary Sample (ppb)	Flush Sample (ppb)	Recommended Remediation	Follow-Up Sampling
1	A-1-KIT-PF(fixed) Atkinson Building Kitchen Fixed Pot Filler	15.5	4.09	Immediately remove from service until further action is completed:	No
				1. Permanently remove the fixture from service (by physically disconnecting or removing); OR	Yes
				2. Replace pot filler with a fixture certified to be lead free; OR	Yes
				3. Install point-of-use (POU) filter which complies with NSF/ANSI Standard 53 for lead reduction.	

As a condition of the WIIN Grant Program, each state's lead testing program was required to establish a program remediation trigger. LDH set a trigger of 10 ppb (10 µg/L). A sample result for the fixture listed in Table 5.2 exceeded the program remediation trigger, but did not exceed the lead action level. Table 5.2 contains the recommended remediation for the fixture and an indication if follow-up sampling will be required. **Appendix C** includes photo identification for the fixture listed in Table 5.2.

TABLE 5.2 Fixtures over the program remediation trigger (10 ppb)

Photo No.	Fixture ID	Primary Sample (ppb)	Flush Sample (ppb)	Recommended Remediation	Follow-Up Sampling
2	A-1-KIT-PF(swing) Atkinson Building Kitchen Swing (moveable) Pot Filler	14.2	2.95	Immediately remove from service until further action is completed:	No
				1. Permanently remove the fixture from service (by physically disconnecting or removing); OR	Yes
				2. Replace pot filler with a fixture certified to be lead free; OR	Yes
				3. Install point-of-use (POU) filter which complies with NSF/ANSI Standard 53 for lead reduction.	Yes

Note: Includes only fixtures with sample results greater than 10 ppb, but not greater than 15 ppb.

6.0 OTHER RECOMMENDATIONS

Although not all fixtures sampled at the Facility are recommended for remediation or follow-up sampling, LDH encourages the facility to implement the practices outlined in the following sections to reduce exposure to elevated lead levels and other environmental hazards (e.g. bacteria).

6.1 Implement Routine Practices

Please be aware that there are many factors that contribute to lead levels in drinking water (i.e., plumbing materials, water temperature, water quality, frequency of water usage and stagnation, etc.). Because of this, lead levels may fluctuate over time. To reduce exposure to elevated lead levels and other drinking water contaminants, it is recommended that schools and child care facilities establish routine practices in accordance with Module 6 of the EPA 3Ts for Reducing Lead in Drinking Water Manual (see “Establishing Routine Practices” beginning on page 48, <https://www.epa.gov/system/files/documents/2021-07/epa-3ts-guidance-document-english.pdf>, or found in **Attachment 2**).

7.0 CONCLUSIONS

In accordance with EPA's 3Ts for Reducing Lead in Drinking Water in Schools and Child Care Facilities and under the direction of the Louisiana Department of Health, Matrix assessed and sampled the sources of drinking water used for consumption by child care facility students in order to determine the concentration of lead in drinking water. The Facility did not contain any banned fixtures.

Matrix collected 42 water samples from 22 fixtures at the Facility which were analyzed according to sampling guidelines. The Facility had one fixture that exceeded the lead action level (15 ppb) and one fixture that exceeded the Louisiana program remediation trigger (10 ppb). These pot fillers are located in the kitchen, and LDH recommends the fixtures be immediately removed from service until further remediation can be completed (see Tables 5.1 and 5.2 for additional information).

Additionally, given the physical and behavioral effects of lead and the vulnerability of young children to lead, LDH also recommends the Facility implement routine practices as outlined in Module 6 of the 3Ts manual.

Through voluntary participation in the WIIN Grant Lead Testing Program, the Facility should now have a better understanding of the potential presence and concentration of lead in drinking water. The recommendations and resources included in this report provide the tools needed to take action and implement practices to reduce lead exposure through drinking water.

8.0 ADDITIONAL INFORMATION AND RESOURCES

The following links contain additional information and resources regarding lead in drinking water:

- EPA's 3Ts for Reducing Lead in Drinking Water <https://www.epa.gov/ground-water-and-drinking-water/3ts-reducing-lead-drinking-water>
- The 3Ts Revised Manual <https://www.epa.gov/system/files/documents/2021-07/epa-3ts-guidance-document-english.pdf>
- Learn About Lead <https://www.epa.gov/lead/learn-about-lead>
- Childhood Lead Poisoning Prevention Program <https://www.cdc.gov/nceh/lead/>
- Basic Information about Lead in Drinking Water <https://www.epa.gov/ground-water-and-drinking-water/basic-information-about-lead-drinking-water>
- Lead in Drinking Water <https://www.cdc.gov/nceh/lead/prevention/sources/water.htm>

9.0 SIGNATURES



October 21, 2022

Dawn M. Brown
Director of Waste Services
Matrix New World Engineering

Date



October 21, 2022

Linda M. McConnell, PE
PE 20434 Louisiana
Matrix New World Engineering

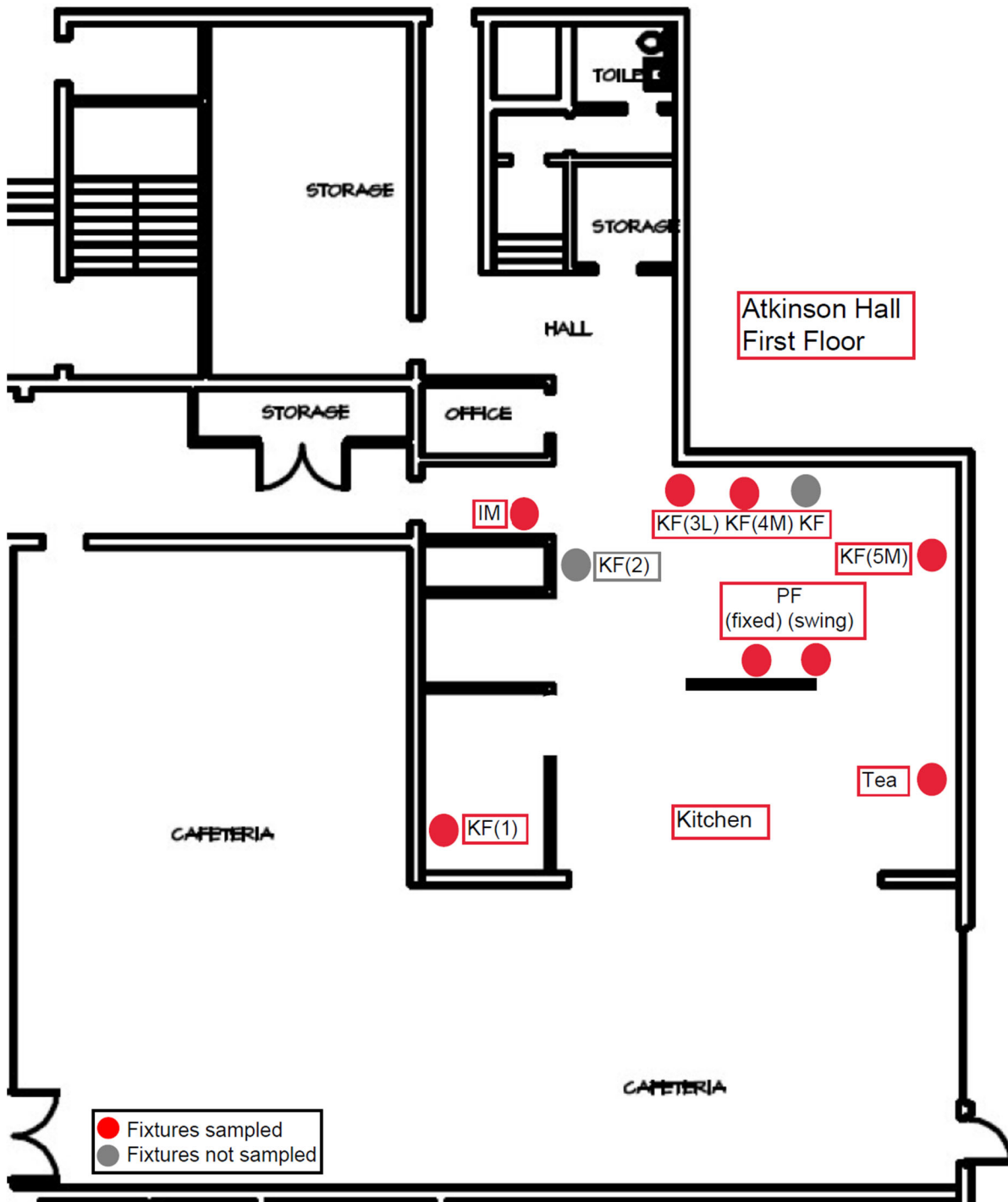
Date

APPENDIX A

FACILITY MAPS

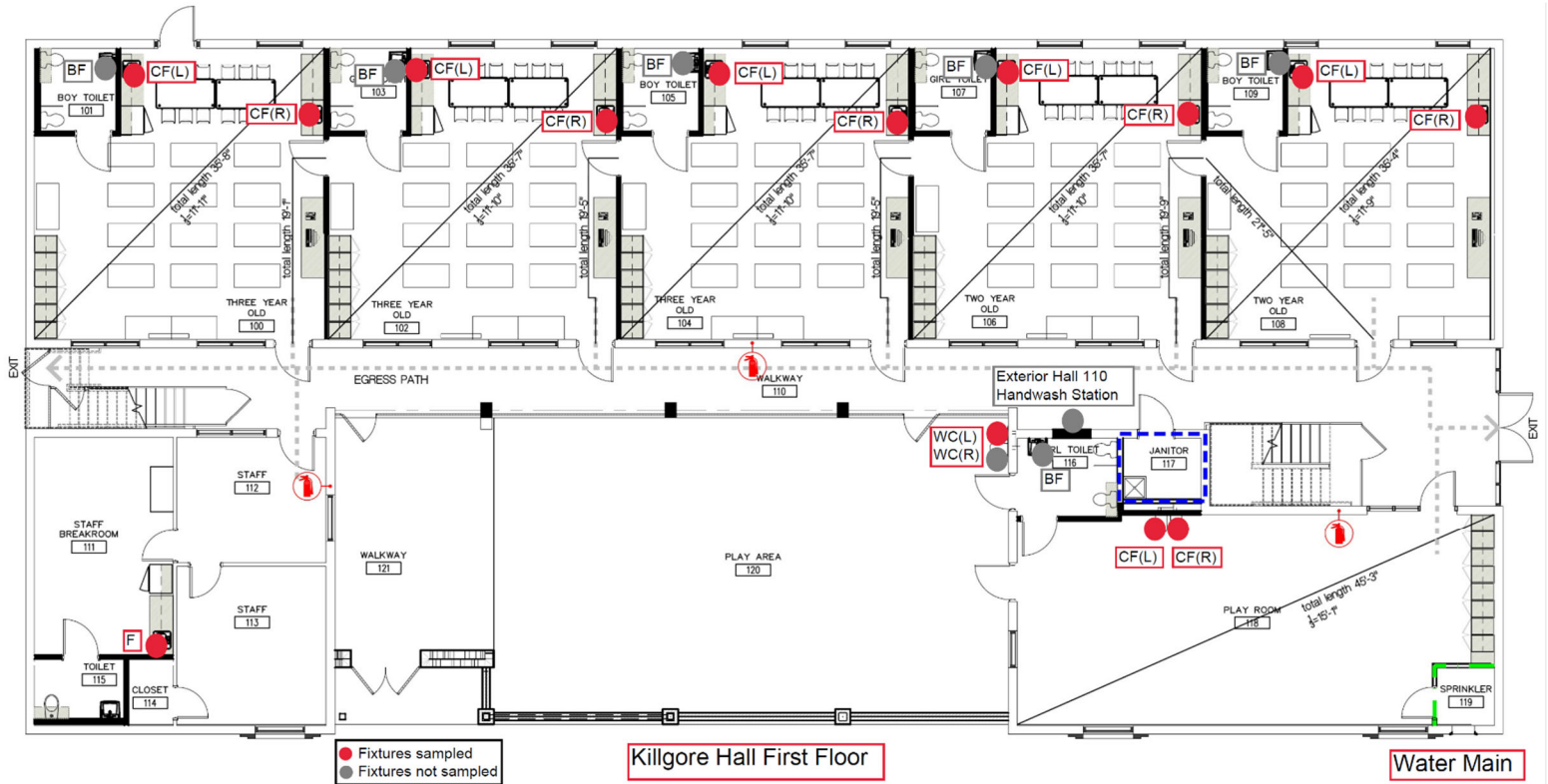
Map 1 of 2

Atkinson Building Kitchen



Map 2 of 2

Killgore Building



APPENDIX B

ID CODES AND ABBREVIATIONS

Fixture ID Naming

(Building) – (Floor) – (Room# or Name) – (Fixture Type and location) – (Primary or Flush)

Room Name Codes

Kitchen	KIT	Hallway	HAL
Bathroom	BATH	Office	OFF
Cafeteria	CAF	Exterior	EXT
Locker room	LR	Teacher's Lounge	TEA
Gymnasium	GYM	Entryway	ENT
Nurse or Nursery	NUR	Concessions	CON
Library	LIB		

Fixture Type Codes

Water Cooler Fountain	WC	Bubbler	BU
Faucet (not listed otherwise)	F	Sink Bubbler	SB
Classroom Faucet (sink)	CF	Kitchen Faucet (sink)	KF
Bathroom Faucet (sink)	BF	Nurse's Office Faucet/Sink	NF
Janitor Closet Faucet/Sink	JF	Kitchen Pot Filler	PF
Ice Machine	IM	Shower Head	SH
Water Dispenser	WD	Bottle Filler	BTL
Portable Sink	PS	Tea Maker	Tea

Fixture Location

Left	L	Middle Left	ML
Right	R	Middle Right	MR
Middle	M		

Primary or Flush

Primary- The first water to exit the fixture to fill the first sample bottle	P
Flush- Sample following the 30 second flush	F

APPENDIX C

FIXTURE IDENTIFICATION PHOTOS



Photo 1
Fixture ID: A-1-KIT-PF(fixed)
Fixture Type: Pot Filler
Recommendation: See Table 5.1

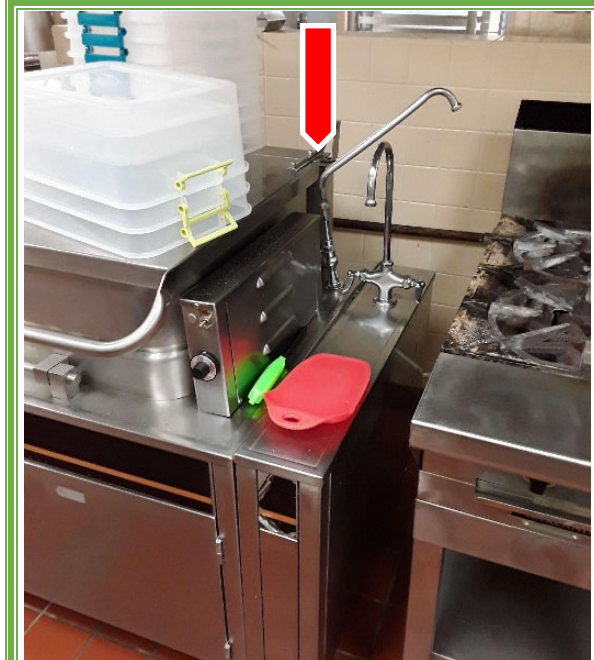


Photo 2
Fixture ID: A-1-KIT-PF(swing)
Fixture Type: Pot Filler
Recommendation: See Table 5.2

ATTACHMENT 1

ANALYTICAL LABORATORY REPORTS

10/17/2022

Matrix New World Engineering
Ms. Dawn Brown
2798 O'Neal Lane, Building F
Baton Rouge, LA, 70818

Ref: Report Number: 22-279-0041
Project Description: St. James Episcopal Day School

Dear Ms. Dawn Brown:

Waypoint Analytical Louisiana, Inc. received sample(s) on 10/6/2022 for the analyses presented in the following report. The above referenced project has been analyzed per your instructions. Unless otherwise noted, the analyses were performed in our laboratory in accordance with Standard Methods, The Solid Waste Manual SW-846, EPA Methods for Chemical Analysis of Water and Wastes and /or 40 CFR part 136.

Certain parameters (chlorine, pH, dissolved oxygen, sulfite...) are required to be analyzed within 15 minutes of sampling. Usually, but not always, any field parameter analyzed at the laboratory is outside of this holding time. Refer to sample analysis time for confirmation of holding time compliance. Analyses reported which indicate "Field" for these parameters were analyzed by the client in the field. Results for solid samples are reported on an as received or "wet weight" basis unless otherwise specified.

The analytical data has been validated using standard quality control measures performed as required by the analytical method. Quality Assurance, method validations, instrumentation maintenance and calibration for all parameters (NELAP and non-NELAP) were performed in accordance with guidelines established by the USEPA (including 40 CFR 136 Method Update Rule May 2021) and NELAC unless otherwise indicated. Any parameter for which the laboratory is not officially NELAP accredited is indicated by a '~' symbol. These are not included in the scope because NELAP accreditation is either not available or has not been applied for. Additional certifications may be held/are available for parameters, where NELAP accreditation is not required or applicable. A full list of certifications is available upon request.

All quality control measures undertaken in accordance with Waypoint Analytical Louisiana, Inc. CompQAP990807A and revisions under the terms of the Louisiana Environmental Laboratory Accreditation Program (Certificate #02041) are within acceptance ranges established in that document with the exception of the items indicated and/or discussed in a Case Narrative.

The results are shown on the attached analysis sheet(s). Be aware that the time analyzed for certain samples (e.g. - BOD, CBOD, etc.) refer to the time the sample batch was begun and not necessarily to the time an individual sample was begun. Thank you for allowing Waypoint Analytical Louisiana, Inc. to serve you. Should I be of further assistance, if you have any questions or need additional information please contact me or client services.

Sincerely,



Amy Jackson
Project Manager

Laboratory's liability in any claim relating to analyses performed shall be limited to, at laboratory's option, repeating the analysis in question at laboratory's expense, or the refund of the charges paid for performance of said analysis. This report may be reproduced in full only with the written permission of the laboratory and/or the entity to which it is addressed. Results contained herein relate only to the sample(s) submitted to the laboratory.



Certification Summary

Laboratory ID: WP MLA: Waypoint Analytical Louisiana, Inc., Marrero, LA

State	Program	Lab ID	Expiration Date
Georgia	State Program	02041	06/30/2023
Louisiana	State Program - NELAP	02041	06/30/2023

Laboratory ID: WP MTN: Waypoint Analytical, LLC., Memphis, TN

State	Program	Lab ID	Expiration Date
Alabama	State Program	40750	02/28/2023
Arkansas	State Program	88-0650	02/07/2023
California	State Program	2904	06/30/2023
Florida	State Program - NELAP	E871157	06/30/2023
Georgia	State Program	C044	02/18/2023
Georgia	State Program	04015	06/30/2023
Illinois	State Program - NELAP	200078	10/10/2023
Kentucky	State Program	80215	06/30/2023
Kentucky	State Program	KY90047	12/31/2022
Louisiana	State Program - NELAP	LA037	12/31/2022
Louisiana	State Program - NELAP	04015	06/30/2023
Mississippi	State Program	MS	02/11/2023
North Carolina	State Program	415	12/31/2022
Pennsylvania	State Program - NELAP	68-03195	05/31/2023
South Carolina	State Program	84002	06/30/2022
Tennessee	State Program	02027	02/11/2023
Texas	State Program - NELAP	T104704180	09/30/2022
Virginia	State Program	00106	06/30/2023
Virginia	State Program - NELAP	460181	09/14/2023

Sample Summary Table

Report Number: 22-279-0041

Client Project Description: St. James Episcopal Day School

Lab No	Client Sample ID	Matrix	Date Collected	Date Received	Method	Lab ID
76838	A-1-KIT-KF(1)-P	Aqueous	10/06/2022 06:56	10/06/2022 13:50	EPA-200.8 (DW)	WP MTN
76839	A-1-KIT-IM-P	Aqueous	10/06/2022 06:57	10/06/2022 13:50	EPA-200.8 (DW)	WP MTN
76840	A-1-KIT-KF(3L)-P	Aqueous	10/06/2022 06:58	10/06/2022 13:50	EPA-200.8 (DW)	WP MTN
76841	A-1-KIT-KF(4M)-P	Aqueous	10/06/2022 06:59	10/06/2022 13:50	EPA-200.8 (DW)	WP MTN
76842	A-1-KIT-PF(fixed)-P	Aqueous	10/06/2022 07:00	10/06/2022 13:50	EPA-200.8 (DW)	WP MTN
76843	A-1-KIT-PF(swing)-P	Aqueous	10/06/2022 07:01	10/06/2022 13:50	EPA-200.8 (DW)	WP MTN
76844	A-1-KIT-KF(5M)-P	Aqueous	10/06/2022 07:02	10/06/2022 13:50	EPA-200.8 (DW)	WP MTN
76845	A-1-KIT-Tea-P	Aqueous	10/06/2022 07:03	10/06/2022 13:50	EPA-200.8 (DW)	WP MTN
76846	K-1-118-CF(L)-P	Aqueous	10/06/2022 07:14	10/06/2022 13:50	EPA-200.8 (DW)	WP MTN
76847	K-1-118-CF(R)-P	Aqueous	10/06/2022 07:15	10/06/2022 13:50	EPA-200.8 (DW)	WP MTN
76848	K-1-Ext120-WC(L)-P	Aqueous	10/06/2022 07:18	10/06/2022 13:50	EPA-200.8 (DW)	WP MTN
76849	K-1-111-F-P	Aqueous	10/06/2022 07:20	10/06/2022 13:50	EPA-200.8 (DW)	WP MTN
76850	K-1-100-CF(L)-P	Aqueous	10/06/2022 07:22	10/06/2022 13:50	EPA-200.8 (DW)	WP MTN
76851	K-1-100-CF(R)-P	Aqueous	10/06/2022 07:23	10/06/2022 13:50	EPA-200.8 (DW)	WP MTN
76852	K-1-102-CF(L)-P	Aqueous	10/06/2022 07:26	10/06/2022 13:50	EPA-200.8 (DW)	WP MTN
76853	K-1-102-CF(R)-P	Aqueous	10/06/2022 07:27	10/06/2022 13:50	EPA-200.8 (DW)	WP MTN
76854	K-1-104-CF(L)-P	Aqueous	10/06/2022 07:30	10/06/2022 13:50	EPA-200.8 (DW)	WP MTN
76855	K-1-104-CF(R)-P	Aqueous	10/06/2022 07:31	10/06/2022 13:50	EPA-200.8 (DW)	WP MTN
76856	K-1-106-CF(L)-P	Aqueous	10/06/2022 07:34	10/06/2022 13:50	EPA-200.8 (DW)	WP MTN
76857	K-1-106-CF(R)-P	Aqueous	10/06/2022 07:35	10/06/2022 13:50	EPA-200.8 (DW)	WP MTN
76858	K-1-108-CF(L)-P	Aqueous	10/06/2022 07:38	10/06/2022 13:50	EPA-200.8 (DW)	WP MTN
76859	K-1-108-CF(R)-P	Aqueous	10/06/2022 07:39	10/06/2022 13:50	EPA-200.8 (DW)	WP MTN

Summary of Detected Analytes

Project: St. James Episcopal Day School

Report Number: 22-279-0041

Client Sample ID Method	Lab Sample ID Parameters	Result	Units	Report Limit	Analyzed	Qualifiers
A-1-KIT-KF(1)-P	A 76838					
EPA-200.8 (DW)	Lead	1.87	µg/L	0.500	10/11/2022 12:32	
A-1-KIT-IM-P	A 76839					
EPA-200.8 (DW)	Lead	0.647	µg/L	0.500	10/13/2022 17:10	
A-1-KIT-KF(3L)-P	A 76840					
EPA-200.8 (DW)	Lead	1.79	µg/L	0.500	10/11/2022 12:34	
A-1-KIT-KF(4M)-P	A 76841					
EPA-200.8 (DW)	Lead	2.72	µg/L	0.500	10/11/2022 12:36	
A-1-KIT-PF(fixed)-P	A 76842					
EPA-200.8 (DW)	Lead	15.5	µg/L	0.500	10/11/2022 12:38	
A-1-KIT-PF(swing)-P	A 76843					
EPA-200.8 (DW)	Lead	14.2	µg/L	0.500	10/11/2022 12:39	
A-1-KIT-KF(5M)-P	A 76844					
EPA-200.8 (DW)	Lead	2.86	µg/L	0.500	10/11/2022 12:41	
A-1-KIT-Tea-P	A 76845					
EPA-200.8 (DW)	Lead	2.78	µg/L	0.500	10/11/2022 12:43	
K-1-118-CF(L)-P	A 76846					
EPA-200.8 (DW)	Lead	1.98	µg/L	0.500	10/11/2022 12:45	
K-1-118-CF(R)-P	A 76847					
EPA-200.8 (DW)	Lead	1.69	µg/L	0.500	10/11/2022 12:52	
K-1-Ext120-WC(L)-I	A 76848					
EPA-200.8 (DW)	Lead	1.13	µg/L	0.500	10/11/2022 12:53	
K-1-111-F-P	A 76849					
EPA-200.8 (DW)	Lead	1.65	µg/L	0.500	10/11/2022 12:55	
K-1-100-CF(L)-P	A 76850					
EPA-200.8 (DW)	Lead	2.12	µg/L	0.500	10/11/2022 12:57	
K-1-100-CF(R)-P	A 76851					
EPA-200.8 (DW)	Lead	2.06	µg/L	0.500	10/11/2022 12:59	

Summary of Detected Analytes

Project: St. James Episcopal Day School

Report Number: 22-279-0041

Client Sample ID Method	Lab Sample ID Parameters	Result	Units	Report Limit	Analyzed	Qualifiers
K-1-102-CF(L)-P	A 76852					
EPA-200.8 (DW)	Lead	1.95	µg/L	0.500	10/11/2022 13:01	
K-1-102-CF(R)-P	A 76853					
EPA-200.8 (DW)	Lead	2.13	µg/L	0.500	10/11/2022 13:02	
K-1-104-CF(L)-P	A 76854					
EPA-200.8 (DW)	Lead	1.80	µg/L	0.500	10/11/2022 13:04	
K-1-104-CF(R)-P	A 76855					
EPA-200.8 (DW)	Lead	2.22	µg/L	0.500	10/11/2022 13:06	
K-1-106-CF(L)-P	A 76856					
EPA-200.8 (DW)	Lead	1.78	µg/L	0.500	10/11/2022 13:08	
K-1-106-CF(R)-P	A 76857					
EPA-200.8 (DW)	Lead	2.21	µg/L	0.500	10/12/2022 15:06	
K-1-108-CF(L)-P	A 76858					
EPA-200.8 (DW)	Lead	2.09	µg/L	0.500	10/12/2022 15:08	
K-1-108-CF(R)-P	A 76859					
EPA-200.8 (DW)	Lead	1.97	µg/L	0.500	10/12/2022 15:09	

Project St. James Episcopal Day School
Information:

Report Number: 22-279-0041
Report Date: 10/17/2022

Sample Results

A-1-KIT-KF(1)-P

Date Collected 10/06/2022 06:56 **WPA Lab No** 76838
Date Received 10/06/2022 13:50 **Matrix** Aqueous

EPA-200.8 (DW)

Prep Date	Prep Batch	Prep Method	Sample	Dilution	Analysis Date	By	Analytical Batch
10/10/2022 15:32	L642223	EPA-200.8	50 mL	1	10/11/2022 12:32:37	BKN	L642689

CAS#	Parameter	Result	MQL	Units
7439-92-1	Lead	1.87	0.500	µg/L

A-1-KIT-IM-P

Date Collected 10/06/2022 06:57 **WPA Lab No** 76839
Date Received 10/06/2022 13:50 **Matrix** Aqueous

EPA-200.8 (DW)

Prep Date	Prep Batch	Prep Method	Sample	Dilution	Analysis Date	By	Analytical Batch
10/11/2022 12:18	L642433	EPA-200.8	50 mL	1	10/13/2022 17:10:43	BKN	L643150

CAS#	Parameter	Result	MQL	Units
7439-92-1	Lead	0.647	0.500	µg/L

A-1-KIT-KF(3L)-P

Date Collected 10/06/2022 06:58 **WPA Lab No** 76840
Date Received 10/06/2022 13:50 **Matrix** Aqueous

EPA-200.8 (DW)

Prep Date	Prep Batch	Prep Method	Sample	Dilution	Analysis Date	By	Analytical Batch
10/10/2022 15:32	L642223	EPA-200.8	50 mL	1	10/11/2022 12:34:26	BKN	L642689

CAS#	Parameter	Result	MQL	Units
7439-92-1	Lead	1.79	0.500	µg/L

Qualifiers/ Definitions

MDL Method Detection Limit

MQL Method Quantitation Limit

Project St. James Episcopal Day School
Information:

Report Number: 22-279-0041
Report Date: 10/17/2022

Sample Results

A-1-KIT-KF(4M)-P

Date Collected 10/06/2022 06:59 **WPA Lab No** 76841
Date Received 10/06/2022 13:50 **Matrix** Aqueous

EPA-200.8 (DW)

Prep Date	Prep Batch	Prep Method	Sample	Dilution	Analysis Date	By	Analytical Batch
10/10/2022 15:32	L642223	EPA-200.8	50 mL	1	10/11/2022 12:36:15	BKN	L642689

CAS#	Parameter	Result	MQL	Units
7439-92-1	Lead	2.72	0.500	µg/L

A-1-KIT-PF(fixed)-P

Date Collected 10/06/2022 07:00 **WPA Lab No** 76842
Date Received 10/06/2022 13:50 **Matrix** Aqueous

EPA-200.8 (DW)

Prep Date	Prep Batch	Prep Method	Sample	Dilution	Analysis Date	By	Analytical Batch
10/10/2022 15:32	L642223	EPA-200.8	50 mL	1	10/11/2022 12:38:04	BKN	L642689

CAS#	Parameter	Result	MQL	Units
7439-92-1	Lead	15.5	0.500	µg/L

A-1-KIT-PF(swing)-P

Date Collected 10/06/2022 07:01 **WPA Lab No** 76843
Date Received 10/06/2022 13:50 **Matrix** Aqueous

EPA-200.8 (DW)

Prep Date	Prep Batch	Prep Method	Sample	Dilution	Analysis Date	By	Analytical Batch
10/10/2022 15:32	L642223	EPA-200.8	50 mL	1	10/11/2022 12:39:54	BKN	L642689

CAS#	Parameter	Result	MQL	Units
7439-92-1	Lead	14.2	0.500	µg/L

Qualifiers/ Definitions

MDL Method Detection Limit

MQL Method Quantitation Limit

Project St. James Episcopal Day School
Information:

Report Number: 22-279-0041
Report Date: 10/17/2022

Sample Results

A-1-KIT-KF(5M)-P

Date Collected 10/06/2022 07:02 **WPA Lab No** 76844
Date Received 10/06/2022 13:50 **Matrix** Aqueous

EPA-200.8 (DW)

Prep Date	Prep Batch	Prep Method	Sample	Dilution	Analysis Date	By	Analytical Batch
10/10/2022 15:32	L642223	EPA-200.8	50 mL	1	10/11/2022 12:41:44	BKN	L642689

CAS#	Parameter	Result	MQL	Units
7439-92-1	Lead	2.86	0.500	µg/L

A-1-KIT-Tea-P

Date Collected 10/06/2022 07:03 **WPA Lab No** 76845
Date Received 10/06/2022 13:50 **Matrix** Aqueous

EPA-200.8 (DW)

Prep Date	Prep Batch	Prep Method	Sample	Dilution	Analysis Date	By	Analytical Batch
10/10/2022 15:32	L642223	EPA-200.8	50 mL	1	10/11/2022 12:43:35	BKN	L642689

CAS#	Parameter	Result	MQL	Units
7439-92-1	Lead	2.78	0.500	µg/L

K-1-118-CF(L)-P

Date Collected 10/06/2022 07:14 **WPA Lab No** 76846
Date Received 10/06/2022 13:50 **Matrix** Aqueous

EPA-200.8 (DW)

Prep Date	Prep Batch	Prep Method	Sample	Dilution	Analysis Date	By	Analytical Batch
10/10/2022 15:32	L642223	EPA-200.8	50 mL	1	10/11/2022 12:45:26	BKN	L642689

CAS#	Parameter	Result	MQL	Units
7439-92-1	Lead	1.98	0.500	µg/L

Qualifiers/ Definitions

MDL Method Detection Limit

MQL Method Quantitation Limit

Project St. James Episcopal Day School
Information:

Report Number: 22-279-0041
Report Date: 10/17/2022

Sample Results

K-1-118-CF(R)-P

Date Collected 10/06/2022 07:15 **WPA Lab No** 76847
Date Received 10/06/2022 13:50 **Matrix** Aqueous

EPA-200.8 (DW)

Prep Date	Prep Batch	Prep Method	Sample	Dilution	Analysis Date	By	Analytical Batch
10/10/2022 15:32	L642223	EPA-200.8	50 mL	1	10/11/2022 12:52:01	BKN	L642689

CAS#	Parameter	Result	MQL	Units
7439-92-1	Lead	1.69	0.500	µg/L

K-1-Ext120-WC(L)-P

Date Collected 10/06/2022 07:18 **WPA Lab No** 76848
Date Received 10/06/2022 13:50 **Matrix** Aqueous

EPA-200.8 (DW)

Prep Date	Prep Batch	Prep Method	Sample	Dilution	Analysis Date	By	Analytical Batch
10/10/2022 15:32	L642223	EPA-200.8	50 mL	1	10/11/2022 12:53:50	BKN	L642689

CAS#	Parameter	Result	MQL	Units
7439-92-1	Lead	1.13	0.500	µg/L

K-1-111-F-P

Date Collected 10/06/2022 07:20 **WPA Lab No** 76849
Date Received 10/06/2022 13:50 **Matrix** Aqueous

EPA-200.8 (DW)

Prep Date	Prep Batch	Prep Method	Sample	Dilution	Analysis Date	By	Analytical Batch
10/10/2022 15:32	L642223	EPA-200.8	50 mL	1	10/11/2022 12:55:38	BKN	L642689

CAS#	Parameter	Result	MQL	Units
7439-92-1	Lead	1.65	0.500	µg/L

Qualifiers/ Definitions

MDL Method Detection Limit

MQL Method Quantitation Limit

Project Information: St. James Episcopal Day School

Report Number: 22-279-0041
Report Date: 10/17/2022

Sample Results

K-1-100-CF(L)-P

Date Collected 10/06/2022 07:22 **WPA Lab No** 76850
Date Received 10/06/2022 13:50 **Matrix** Aqueous

EPA-200.8 (DW)

Prep Date	Prep Batch	Prep Method	Sample	Dilution	Analysis Date	By	Analytical Batch
10/10/2022 15:32	L642223	EPA-200.8	50 mL	1	10/11/2022 12:57:27	BKN	L642689

CAS#	Parameter	Result	MQL	Units
7439-92-1	Lead	2.12	0.500	µg/L

K-1-100-CF(R)-P

Date Collected 10/06/2022 07:23 **WPA Lab No** 76851
Date Received 10/06/2022 13:50 **Matrix** Aqueous

EPA-200.8 (DW)

Prep Date	Prep Batch	Prep Method	Sample	Dilution	Analysis Date	By	Analytical Batch
10/10/2022 15:32	L642223	EPA-200.8	50 mL	1	10/11/2022 12:59:16	BKN	L642689

CAS#	Parameter	Result	MQL	Units
7439-92-1	Lead	2.06	0.500	µg/L

K-1-102-CF(L)-P

Date Collected 10/06/2022 07:26 **WPA Lab No** 76852
Date Received 10/06/2022 13:50 **Matrix** Aqueous

EPA-200.8 (DW)

Prep Date	Prep Batch	Prep Method	Sample	Dilution	Analysis Date	By	Analytical Batch
10/10/2022 15:32	L642223	EPA-200.8	50 mL	1	10/11/2022 13:01:06	BKN	L642689

CAS#	Parameter	Result	MQL	Units
7439-92-1	Lead	1.95	0.500	µg/L

Qualifiers/ Definitions

MDL Method Detection Limit

MQL Method Quantitation Limit

Project St. James Episcopal Day School
Information:

Report Number: 22-279-0041
Report Date: 10/17/2022

Sample Results

K-1-102-CF(R)-P

Date Collected 10/06/2022 07:27 **WPA Lab No** 76853
Date Received 10/06/2022 13:50 **Matrix** Aqueous

EPA-200.8 (DW)

Prep Date	Prep Batch	Prep Method	Sample	Dilution	Analysis Date	By	Analytical Batch
10/10/2022 15:32	L642223	EPA-200.8	50 mL	1	10/11/2022 13:02:55	BKN	L642689

CAS#	Parameter	Result	MQL	Units
7439-92-1	Lead	2.13	0.500	µg/L

K-1-104-CF(L)-P

Date Collected 10/06/2022 07:30 **WPA Lab No** 76854
Date Received 10/06/2022 13:50 **Matrix** Aqueous

EPA-200.8 (DW)

Prep Date	Prep Batch	Prep Method	Sample	Dilution	Analysis Date	By	Analytical Batch
10/10/2022 15:32	L642223	EPA-200.8	50 mL	1	10/11/2022 13:04:45	BKN	L642689

CAS#	Parameter	Result	MQL	Units
7439-92-1	Lead	1.80	0.500	µg/L

K-1-104-CF(R)-P

Date Collected 10/06/2022 07:31 **WPA Lab No** 76855
Date Received 10/06/2022 13:50 **Matrix** Aqueous

EPA-200.8 (DW)

Prep Date	Prep Batch	Prep Method	Sample	Dilution	Analysis Date	By	Analytical Batch
10/10/2022 15:32	L642223	EPA-200.8	50 mL	1	10/11/2022 13:06:36	BKN	L642689

CAS#	Parameter	Result	MQL	Units
7439-92-1	Lead	2.22	0.500	µg/L

Qualifiers/ Definitions

MDL Method Detection Limit

MQL Method Quantitation Limit

Project St. James Episcopal Day School
Information:

Report Number: 22-279-0041
Report Date: 10/17/2022

Sample Results

K-1-106-CF(L)-P

Date Collected 10/06/2022 07:34 **WPA Lab No** 76856
Date Received 10/06/2022 13:50 **Matrix** Aqueous

EPA-200.8 (DW)

Prep Date	Prep Batch	Prep Method	Sample	Dilution	Analysis Date	By	Analytical Batch
10/10/2022 15:32	L642223	EPA-200.8	50 mL	1	10/11/2022 13:08:26	BKN	L642689

CAS#	Parameter	Result	MQL	Units
7439-92-1	Lead	1.78	0.500	µg/L

K-1-106-CF(R)-P

Date Collected 10/06/2022 07:35 **WPA Lab No** 76857
Date Received 10/06/2022 13:50 **Matrix** Aqueous

EPA-200.8 (DW)

Prep Date	Prep Batch	Prep Method	Sample	Dilution	Analysis Date	By	Analytical Batch
10/12/2022 09:38	L642224	EPA-200.8	50 mL	1	10/12/2022 15:06:19	JTR	L643046

CAS#	Parameter	Result	MQL	Units
7439-92-1	Lead	2.21	0.500	µg/L

K-1-108-CF(L)-P

Date Collected 10/06/2022 07:38 **WPA Lab No** 76858
Date Received 10/06/2022 13:50 **Matrix** Aqueous

EPA-200.8 (DW)

Prep Date	Prep Batch	Prep Method	Sample	Dilution	Analysis Date	By	Analytical Batch
10/12/2022 09:38	L642224	EPA-200.8	50 mL	1	10/12/2022 15:08:08	JTR	L643046

CAS#	Parameter	Result	MQL	Units
7439-92-1	Lead	2.09	0.500	µg/L

Qualifiers/ Definitions

MDL Method Detection Limit

MQL Method Quantitation Limit

Project Information: St. James Episcopal Day School

Report Number: 22-279-0041
Report Date: 10/17/2022

Sample Results

K-1-108-CF(R)-P

Date Collected 10/06/2022 07:39 **WPA Lab No** 76859
Date Received 10/06/2022 13:50 **Matrix** Aqueous

EPA-200.8 (DW)

Prep Date	Prep Batch	Prep Method	Sample	Dilution	Analysis Date	By	Analytical Batch
10/12/2022 09:38	L642224	EPA-200.8	50 mL	1	10/12/2022 15:09:56	JTR	L643046

CAS#	Parameter	Result	MQL	Units
7439-92-1	Lead	1.97	0.500	µg/L

Qualifiers/ Definitions

MDL Method Detection Limit

MQL Method Quantitation Limit

Quality Control Data

Client ID: Matrix New World Engineering
Project Description: St. James Episcopal Day School
Report No: 22-279-0041

QC Prep: L642223 **QC Analytical Batch(es):** L642689
QC Prep Batch Method: EPA-200.8 **Analysis Method:** EPA-200.8 (DW)
Analysis Description: Metals Analyses

Lab Reagent Blank LRB-L642223 Matrix: AQU
Associated Lab Samples: 76838, 76840, 76841, 76842, 76843, 76844, 76845, 76846, 76847, 76848, 76849, 76850, 76851, 76852, 76853, 76854, 76855, 76856

Parameter	Units	Blank Result	MQL	Analyzed
Lead	µg/L	< 0.500	0.500	10/11/22 12:25

Laboratory Control Sample LCS-L642223

Parameter	Units	Spike Conc.	LCS Result	LCS %Rec	% Rec Limits
Lead	µg/L	50.0	49.5	99.0	85-115

Matrix Spike & Matrix Spike Duplicate A 76856-MS-L642223 A 76856-MSD-L642223

Parameter	Units	Result	MS Spike Conc.	MSD Spike Conc.	MS Result	MSD Result	MS %Rec	MSD %Rec	%Rec Limits	RPD	Max RPD
Lead	µg/L	1.78	50.5	50.5	48.6	47.5	93.0	91.0	70-130	2.2	20.0

Quality Control Data

Client ID: Matrix New World Engineering
Project Description: St. James Episcopal Day School
Report No: 22-279-0041

QC Prep: L642224 **QC Analytical Batch(es):** L643046
QC Prep Batch Method: EPA-200.8 **Analysis Method:** EPA-200.8 (DW)
Analysis Description: Metals Analyses

Lab Reagent Blank LRB-L642224 Matrix: AQU
Associated Lab Samples: 76857, 76858, 76859

Parameter	Units	Blank Result	MQL	Analyzed
Lead	µg/L	< 0.500	0.500	10/12/22 15:03

Laboratory Control Sample LCS-L642224

Parameter	Units	Spike Conc.	LCS Result	LCS %Rec	% Rec Limits
Lead	µg/L	50.0	50.1	100	85-115

Matrix Spike & Matrix Spike Duplicate A 76883-MS-L642224 A 76883-MSD-L642224

Parameter	Units	Result	MS Spike Conc.	MSD Spike Conc.	MS Result	MSD Result	MS %Rec	MSD %Rec	%Rec Limits	RPD	Max RPD
Lead	µg/L	1.77	50.5	50.5	48.3	49.9	92.0	95.0	70-130	3.2	20.0

Quality Control Data

Client ID: Matrix New World Engineering
Project Description: St. James Episcopal Day School
Report No: 22-279-0041

QC Prep: L642433 **QC Analytical Batch(es):** L643150
QC Prep Batch Method: EPA-200.8 **Analysis Method:** EPA-200.8 (DW)
Analysis Description: Metals Analyses

Lab Reagent Blank LRB-L642433 Matrix: AQU
Associated Lab Samples: 76839

Parameter	Units	Blank Result	MQL	Analyzed
Lead	µg/L	< 0.500	0.500	10/13/22 17:07

Laboratory Control Sample LCS-L642433

Parameter	Units	Spike Conc.	LCS Result	LCS %Rec	% Rec Limits
Lead	µg/L	50.0	48.5	97.0	85-115

Matrix Spike & Matrix Spike Duplicate Q 92128-MS-L642433 Q 92128-MSD-L642433

Parameter	Units	Result	MS Spike Conc.	MSD Spike Conc.	MS Result	MSD Result	MS %Rec	MSD %Rec	%Rec Limits	RPD	Max RPD
Lead	µg/L	2.08	50.0	50.0	50.0	50.2	96.0	96.0	70-130	0.3	20.0

Shipment Receipt Form

Customer Number: **01312**

Customer Name: **Matrix New World Engineering**

Report Number: **22-279-0041**

Shipping Method

<input type="radio"/> Fed Ex	<input type="radio"/> US Postal	<input checked="" type="radio"/> Lab	<input type="radio"/> Other :	<input type="text"/>
<input type="radio"/> UPS	<input type="radio"/> Client	<input type="radio"/> Courier	Thermometer ID:	<input type="text"/>

Shipping container/cooler uncompromised?	<input checked="" type="radio"/> Yes	<input type="radio"/> No	
Number of coolers/boxes received	<input type="text" value="1"/>		
Custody seals intact on shipping container/cooler?	<input type="radio"/> Yes	<input type="radio"/> No	<input checked="" type="radio"/> Not Present
Custody seals intact on sample bottles?	<input type="radio"/> Yes	<input type="radio"/> No	<input checked="" type="radio"/> Not Present
Chain of Custody (COC) present?	<input checked="" type="radio"/> Yes	<input type="radio"/> No	
COC agrees with sample label(s)?	<input checked="" type="radio"/> Yes	<input type="radio"/> No	
COC properly completed	<input checked="" type="radio"/> Yes	<input type="radio"/> No	
Samples in proper containers?	<input checked="" type="radio"/> Yes	<input type="radio"/> No	
Sample containers intact?	<input checked="" type="radio"/> Yes	<input type="radio"/> No	
Sufficient sample volume for indicated test(s)?	<input checked="" type="radio"/> Yes	<input type="radio"/> No	
All samples received within holding time?	<input checked="" type="radio"/> Yes	<input type="radio"/> No	
Cooler temperature in compliance?	<input checked="" type="radio"/> Yes	<input type="radio"/> No	
Cooler/Samples arrived at the laboratory on ice. Samples were considered acceptable as cooling process had begun.	<input type="radio"/> Yes	<input checked="" type="radio"/> No	
Water - Sample containers properly preserved	<input checked="" type="radio"/> Yes	<input type="radio"/> No	<input type="radio"/> N/A
Water - VOA vials free of headspace	<input type="radio"/> Yes	<input type="radio"/> No	<input checked="" type="radio"/> N/A
Trip Blanks received with VOAs	<input type="radio"/> Yes	<input type="radio"/> No	<input checked="" type="radio"/> N/A
Soil VOA method 5035 – compliance criteria met	<input type="radio"/> Yes	<input type="radio"/> No	<input checked="" type="radio"/> N/A
<input type="checkbox"/> High concentration container (48 hr)	<input type="checkbox"/> Low concentration EnCore samplers (48 hr)		
<input type="checkbox"/> High concentration pre-weighed (methanol -14 d)	<input type="checkbox"/> Low conc pre-weighed vials (Sod Bis -14 d)		
Special precautions or instructions included?	<input type="radio"/> Yes	<input checked="" type="radio"/> No	

Comments:

Signature:

Date & Time:



Kit ID:	192424
Initiated By:	Amy Jackson
Initiated Date:	10/3/2022
Project Comment	

CHAIN-OF-CUSTODY

	22-279-0041 01312 10-06-2022 17:35:34
Matrix New World Engineering St. James Episcopal Day School	

Company Name	Company Number	Client Project Manager/Contact	Purchase Order Number
Matrix New World Engineering	01312	Ms. Dawn Brown	
Site Name	Project Number	<input type="checkbox"/> RUSH – Additional charges apply <input type="checkbox"/> Special Detection Limits(s) Date Results Needed	Method of Shipment <input type="checkbox"/> Fed Ex <input type="checkbox"/> UPS <input type="checkbox"/> USPS <input type="checkbox"/> Courier <input type="checkbox"/> Client Drop Off Other
St. James Episcopal Day School			
LIMS Project ID	Project Manager Phone #	Project Manager Email	Site/Facility ID #
	225-292-3271	dbrown@mnwe.com	

Date	Time	Sample ID	Matrix	Grab/Comp	# of Cont	Container Type	Preservation	Analyses
10/6/22	0656	A-1-KIT-KF(1)-P 76838	Aqueous		1	Plastic - 250ml	HNO3 - Nitric Acid	200.8 - Lead in DW
10/6/22	0657	A-1-KIT-IM-P 76839	Aqueous		1	Plastic - 250ml	HNO3 - Nitric Acid	200.8 - Lead in DW
10/6/22	0658	A-1-KIT-KF(3L)-P 76840	Aqueous		1	Plastic - 250ml	HNO3 - Nitric Acid	200.8 - Lead in DW
10/6/22	0659	A-1-KIT-KF(4M)-P 76841	Aqueous		1	Plastic - 250ml	HNO3 - Nitric Acid	200.8 - Lead in DW
10/6/22	0700	A-1-KIT-PF(fixed)-P 76842	Aqueous		1	Plastic - 250ml	HNO3 - Nitric Acid	200.8 - Lead in DW
10/6/22	0701	A-1-KIT-PF(swing)-P 76843	Aqueous		1	Plastic - 250ml	HNO3 - Nitric Acid	200.8 - Lead in DW
10/6/22	0702	A-1-KIT-KF(5M)-P 76844	Aqueous		1	Plastic - 250ml	HNO3 - Nitric Acid	200.8 - Lead in DW
10/6/22	0703	A-1-KIT-Tea-P 76845	Aqueous		1	Plastic - 250ml	HNO3 - Nitric Acid	200.8 - Lead in DW

For Laboratory Use Only			Sampled by (Name - Print)	Client Remarks/Comments				
Ice	Custody Seals	Lab Comments	<i>Jody Smith</i>					
Y/N	Y/N		Relinquished by: (SIGNATURE)	Date	Time	Received by: (SIGNATURE)	Date	Time
			<i>[Signature]</i>	10/6/22	0800	<i>Kathy Hendrix</i>	10/6/22	0800
			Relinquished by: (SIGNATURE)	Date	Time	Received by: (SIGNATURE)	Date	Time
Blank/Cooler Temp			<i>Kathy Hendrix</i>	10/6/22	1350	<i>Brandi Hidalgo</i>	10/6/22	1350
<i>Ambient</i>			Relinquished by: (SIGNATURE)	Date	Time	Received by: (SIGNATURE)	Date	Time



Kit ID:	192424
Initiated By:	Amy Jackson
Initiated Date:	10/3/2022
Project Comment	

CHAIN-OF-CUSTODY

Company Name	Company Number	Client Project Manager/Contact	Purchase Order Number
Matrix New World Engineering	01312	Ms. Dawn Brown	
Site Name	Project Number	<input type="checkbox"/> RUSH – Additional charges apply <input type="checkbox"/> Special Detection Limits(s) Date Results Needed	Method of Shipment <input type="checkbox"/> Fed Ex <input type="checkbox"/> UPS <input type="checkbox"/> USPS <input type="checkbox"/> Courier <input type="checkbox"/> Client Drop Off Other
St. James Episcopal Day School			
LIMS Project ID	Project Manager Phone #	Project Manager Email	Site/Facility ID #
	225-292-3271	dbrown@mnwe.com	

Date	Time	Sample ID	Matrix	Grab/Comp	# of Cont	Container Type	Preservation	Analyses
10/6/22	0714	K-1-118-CF(L)-P 76846	Aqueous		1	Plastic - 250ml	HNO3 - Nitric Acid	200.8 - Lead in DW
10/6/22	0715	K-1-118-CF(R)-P 76847	Aqueous		1	Plastic - 250ml	HNO3 - Nitric Acid	200.8 - Lead in DW
10/6/22	0718	K-1-Ext120-WC(L)-P 76848	Aqueous		1	Plastic - 250ml	HNO3 - Nitric Acid	200.8 - Lead in DW
10/6/22	0720	K-1-111-F-P 76849	Aqueous		1	Plastic - 250ml	HNO3 - Nitric Acid	200.8 - Lead in DW
10/6/22	0722	K-1-100-CF(L)-P 76850	Aqueous		1	Plastic - 250ml	HNO3 - Nitric Acid	200.8 - Lead in DW
10/6/22	0723	K-1-100-CF(R)-P 76851	Aqueous		1	Plastic - 250ml	HNO3 - Nitric Acid	200.8 - Lead in DW
10/6/22	0726	K-1-102-CF(L)-P 76852	Aqueous		1	Plastic - 250ml	HNO3 - Nitric Acid	200.8 - Lead in DW
10/6/22	0727	K-1-102-CF(R)-P 76853	Aqueous		1	Plastic - 250ml	HNO3 - Nitric Acid	200.8 - Lead in DW

For Laboratory Use Only			Sampled by (Name - Print)	Client Remarks/Comments				
Ice	Custody	Lab Comments	Sodi Smith					
Y/N	Seals		Relinquished by: (SIGNATURE)	Date	Time	Received by: (SIGNATURE)	Date	Time
	Y/N		Relinquished by: (SIGNATURE)	Date	Time	Received by: (SIGNATURE)	Date	Time
Blank/Cooler Temp			Relinquished by: (SIGNATURE)	Date	Time	Received by: (SIGNATURE)	Date	Time
Ambient								



Kit ID:	192424
Initiated By:	Amy Jackson
Initiated Date:	10/3/2022
Project Comment	

CHAIN-OF-CUSTODY

Company Name	Company Number	Client Project Manager/Contact	Purchase Order Number
Matrix New World Engineering	01312	Ms. Dawn Brown	
Site Name	Project Number	<input type="checkbox"/> RUSH – Additional charges apply <input type="checkbox"/> Special Detection Limits(s) Date Results Needed	Method of Shipment <input type="checkbox"/> Fed Ex <input type="checkbox"/> UPS <input type="checkbox"/> USPS <input type="checkbox"/> Courier <input type="checkbox"/> Client Drop Off Other
St. James Episcopal Day School			
LIMS Project ID	Project Manager Phone #	Project Manager Email	Site/Facility ID #
	225-292-3271	dbrown@mnwe.com	

Date	Time	Sample ID	Matrix	Grab/Comp	# of Cont	Container Type	Preservation	Analyses
10/6/22	0730	K-1-104-CF(L)-P 76854	Aqueous		1	Plastic - 250ml	HNO3 - Nitric Acid	200.8 - Lead in DW
10/6/22	0731	K-1-104-CF(R)-P 76855	Aqueous		1	Plastic - 250ml	HNO3 - Nitric Acid	200.8 - Lead in DW
10/6/22	0734	K-1-106-CF(L)-P 76856	Aqueous		1	Plastic - 250ml	HNO3 - Nitric Acid	200.8 - Lead in DW
10/6/22	0735	K-1-106-CF(R)-P 76857	Aqueous		1	Plastic - 250ml	HNO3 - Nitric Acid	200.8 - Lead in DW
10/6/22	0738	K-1-108-CF(L)-P 76858	Aqueous		1	Plastic - 250ml	HNO3 - Nitric Acid	200.8 - Lead in DW
10/6/22	0739	K-1-108-CF(R)-P 76859	Aqueous		1	Plastic - 250ml	HNO3 - Nitric Acid	200.8 - Lead in DW

For Laboratory Use Only			Sampled by (Name - Print)		Client Remarks/Comments				
Ice	Custody Seals	Lab Comments	Jody Smith						
Y/N	Y/N		Relinquished by: (SIGNATURE)		Date	Time	Received by: (SIGNATURE)	Date	Time
			Kathy Hendrix		10/6/22	0800	Kathy Hendrix	10/6/22	0800
Blank/Cooler Temp			Relinquished by: (SIGNATURE)		Date	Time	Received by: (SIGNATURE)	Date	Time
Ambient			Kathy Hendrix 10/6/22 1350				Brandi Hidalgo	10-6-22	1350
			Relinquished by: (SIGNATURE)		Date	Time	Received by: (SIGNATURE)	Date	Time

10/17/2022

Matrix New World Engineering
Ms. Dawn Brown
2798 O'Neal Lane, Building F
Baton Rouge, LA, 70818

Ref: Report Number: 22-279-0042
Project Description: St. James Episcopal Day School

Dear Ms. Dawn Brown:

Waypoint Analytical Louisiana, Inc. received sample(s) on 10/6/2022 for the analyses presented in the following report. The above referenced project has been analyzed per your instructions. Unless otherwise noted, the analyses were performed in our laboratory in accordance with Standard Methods, The Solid Waste Manual SW-846, EPA Methods for Chemical Analysis of Water and Wastes and /or 40 CFR part 136.

Certain parameters (chlorine, pH, dissolved oxygen, sulfite...) are required to be analyzed within 15 minutes of sampling. Usually, but not always, any field parameter analyzed at the laboratory is outside of this holding time. Refer to sample analysis time for confirmation of holding time compliance. Analyses reported which indicate "Field" for these parameters were analyzed by the client in the field. Results for solid samples are reported on an as received or "wet weight" basis unless otherwise specified.

The analytical data has been validated using standard quality control measures performed as required by the analytical method. Quality Assurance, method validations, instrumentation maintenance and calibration for all parameters (NELAP and non-NELAP) were performed in accordance with guidelines established by the USEPA (including 40 CFR 136 Method Update Rule May 2021) and NELAC unless otherwise indicated. Any parameter for which the laboratory is not officially NELAP accredited is indicated by a '~' symbol. These are not included in the scope because NELAP accreditation is either not available or has not been applied for. Additional certifications may be held/are available for parameters, where NELAP accreditation is not required or applicable. A full list of certifications is available upon request.

All quality control measures undertaken in accordance with Waypoint Analytical Louisiana, Inc. CompQAP990807A and revisions under the terms of the Louisiana Environmental Laboratory Accreditation Program (Certificate #02041) are within acceptance ranges established in that document with the exception of the items indicated and/or discussed in a Case Narrative.

The results are shown on the attached analysis sheet(s). Be aware that the time analyzed for certain samples (e.g. - BOD, CBOD, etc.) refer to the time the sample batch was begun and not necessarily to the time an individual sample was begun. Thank you for allowing Waypoint Analytical Louisiana, Inc. to serve you. Should I be of further assistance, if you have any questions or need additional information please contact me or client services.

Sincerely,



Amy Jackson
Project Manager

Laboratory's liability in any claim relating to analyses performed shall be limited to, at laboratory's option, repeating the analysis in question at laboratory's expense, or the refund of the charges paid for performance of said analysis. This report may be reproduced in full only with the written permission of the laboratory and/or the entity to which it is addressed. Results contained herein relate only to the sample(s) submitted to the laboratory.



Certification Summary

Laboratory ID: WP MLA: Waypoint Analytical Louisiana, Inc., Marrero, LA

State	Program	Lab ID	Expiration Date
Georgia	State Program	02041	06/30/2023
Louisiana	State Program - NELAP	02041	06/30/2023

Laboratory ID: WP MTN: Waypoint Analytical, LLC., Memphis, TN

State	Program	Lab ID	Expiration Date
Alabama	State Program	40750	02/28/2023
Arkansas	State Program	88-0650	02/07/2023
California	State Program	2904	06/30/2023
Florida	State Program - NELAP	E871157	06/30/2023
Georgia	State Program	C044	02/18/2023
Georgia	State Program	04015	06/30/2023
Illinois	State Program - NELAP	200078	10/10/2023
Kentucky	State Program	80215	06/30/2023
Kentucky	State Program	KY90047	12/31/2022
Louisiana	State Program - NELAP	LA037	12/31/2022
Louisiana	State Program - NELAP	04015	06/30/2023
Mississippi	State Program	MS	02/11/2023
North Carolina	State Program	415	12/31/2022
Pennsylvania	State Program - NELAP	68-03195	05/31/2023
South Carolina	State Program	84002	06/30/2022
Tennessee	State Program	02027	02/11/2023
Texas	State Program - NELAP	T104704180	09/30/2022
Virginia	State Program	00106	06/30/2023
Virginia	State Program - NELAP	460181	09/14/2023

Sample Summary Table

Report Number: 22-279-0042

Client Project Description: St. James Episcopal Day School

Lab No	Client Sample ID	Matrix	Date Collected	Date Received	Method	Lab ID
76866	A-1-KIT-KF(1)-F	Aqueous	10/06/2022 07:05	10/06/2022 13:50	EPA-200.8 (DW)	WP MTN
76867	A-1-KIT-KF(3L)-F	Aqueous	10/06/2022 07:06	10/06/2022 13:50	EPA-200.8 (DW)	WP MTN
76868	A-1-KIT-KF(4M)-F	Aqueous	10/06/2022 07:07	10/06/2022 13:50	EPA-200.8 (DW)	WP MTN
76869	A-1-KIT-PF(fixed)-F	Aqueous	10/06/2022 07:08	10/06/2022 13:50	EPA-200.8 (DW)	WP MTN
76870	A-1-KIT-PF(swing)-F	Aqueous	10/06/2022 07:09	10/06/2022 13:50	EPA-200.8 (DW)	WP MTN
76872	A-1-KIT-Tea-F	Aqueous	10/06/2022 07:11	10/06/2022 13:50	EPA-200.8 (DW)	WP MTN
76873	K-1-118-CF(L)-F	Aqueous	10/06/2022 07:16	10/06/2022 13:50	EPA-200.8 (DW)	WP MTN
76874	K-1-118-CF(R)-F	Aqueous	10/06/2022 07:17	10/06/2022 13:50	EPA-200.8 (DW)	WP MTN
76875	K-1-Ext120-WC(L)-F	Aqueous	10/06/2022 07:19	10/06/2022 13:50	EPA-200.8 (DW)	WP MTN
76876	K-1-111-F-F	Aqueous	10/06/2022 07:21	10/06/2022 13:50	EPA-200.8 (DW)	WP MTN
76877	K-1-100-CF(L)-F	Aqueous	10/06/2022 07:24	10/06/2022 13:50	EPA-200.8 (DW)	WP MTN
76878	K-1-100-CF(R)-F	Aqueous	10/06/2022 07:25	10/06/2022 13:50	EPA-200.8 (DW)	WP MTN
76879	K-1-102-CF(L)-F	Aqueous	10/06/2022 07:28	10/06/2022 13:50	EPA-200.8 (DW)	WP MTN
76880	K-1-102-CF(R)-F	Aqueous	10/06/2022 07:29	10/06/2022 13:50	EPA-200.8 (DW)	WP MTN
76881	K-1-104-CF(L)-F	Aqueous	10/06/2022 07:32	10/06/2022 13:50	EPA-200.8 (DW)	WP MTN
76882	K-1-104-CF(R)-F	Aqueous	10/06/2022 07:33	10/06/2022 13:50	EPA-200.8 (DW)	WP MTN
76883	K-1-106-CF(L)-F	Aqueous	10/06/2022 07:36	10/06/2022 13:50	EPA-200.8 (DW)	WP MTN
76884	K-1-106-CF(R)-F	Aqueous	10/06/2022 07:37	10/06/2022 13:50	EPA-200.8 (DW)	WP MTN
76885	K-1-108-CF(L)-F	Aqueous	10/06/2022 07:40	10/06/2022 13:50	EPA-200.8 (DW)	WP MTN
76886	K-1-108-CF(R)-F	Aqueous	10/06/2022 07:41	10/06/2022 13:50	EPA-200.8 (DW)	WP MTN

Summary of Detected Analytes

Project: St. James Episcopal Day School

Report Number: 22-279-0042

Client Sample ID Method	Lab Sample ID Parameters	Result	Units	Report Limit	Analyzed	Qualifiers
A-1-KIT-KF(1)-F	A 76866					
EPA-200.8 (DW)	Lead	1.41	µg/L	0.500	10/12/2022 15:11	
A-1-KIT-KF(3L)-F	A 76867					
EPA-200.8 (DW)	Lead	1.43	µg/L	0.500	10/12/2022 15:13	
A-1-KIT-KF(4M)-F	A 76868					
EPA-200.8 (DW)	Lead	2.05	µg/L	0.500	10/12/2022 15:15	
A-1-KIT-PF(fixed)-F	A 76869					
EPA-200.8 (DW)	Lead	4.09	µg/L	0.500	10/12/2022 15:17	
A-1-KIT-PF(swing)-F	A 76870					
EPA-200.8 (DW)	Lead	2.95	µg/L	0.500	10/12/2022 15:19	
A-1-KIT-Tea-F	A 76872					
EPA-200.8 (DW)	Lead	2.76	µg/L	0.500	10/12/2022 15:20	
K-1-118-CF(L)-F	A 76873					
EPA-200.8 (DW)	Lead	1.63	µg/L	0.500	10/12/2022 15:22	
K-1-118-CF(R)-F	A 76874					
EPA-200.8 (DW)	Lead	1.69	µg/L	0.500	10/12/2022 15:29	
K-1-Ext120-WC(L)-F	A 76875					
EPA-200.8 (DW)	Lead	1.55	µg/L	0.500	10/12/2022 15:31	
K-1-111-F-F	A 76876					
EPA-200.8 (DW)	Lead	1.80	µg/L	0.500	10/12/2022 15:32	
K-1-100-CF(L)-F	A 76877					
EPA-200.8 (DW)	Lead	1.71	µg/L	0.500	10/12/2022 15:34	
K-1-100-CF(R)-F	A 76878					
EPA-200.8 (DW)	Lead	1.82	µg/L	0.500	10/12/2022 15:36	
K-1-102-CF(L)-F	A 76879					
EPA-200.8 (DW)	Lead	1.79	µg/L	0.500	10/12/2022 15:38	
K-1-102-CF(R)-F	A 76880					
EPA-200.8 (DW)	Lead	1.84	µg/L	0.500	10/12/2022 15:40	

Summary of Detected Analytes

Project: St. James Episcopal Day School

Report Number: 22-279-0042

Client Sample ID Method	Lab Sample ID Parameters	Result	Units	Report Limit	Analyzed	Qualifiers
K-1-104-CF(L)-F	A 76881					
EPA-200.8 (DW)	Lead	1.91	µg/L	0.500	10/12/2022 15:42	
K-1-104-CF(R)-F	A 76882					
EPA-200.8 (DW)	Lead	1.70	µg/L	0.500	10/12/2022 15:43	
K-1-106-CF(L)-F	A 76883					
EPA-200.8 (DW)	Lead	1.77	µg/L	0.500	10/12/2022 15:45	
K-1-106-CF(R)-F	A 76884					
EPA-200.8 (DW)	Lead	1.76	µg/L	0.500	10/12/2022 15:59	
K-1-108-CF(L)-F	A 76885					
EPA-200.8 (DW)	Lead	2.01	µg/L	0.500	10/12/2022 16:01	
K-1-108-CF(R)-F	A 76886					
EPA-200.8 (DW)	Lead	1.97	µg/L	0.500	10/12/2022 16:03	

Project St. James Episcopal Day School
Information:

Report Number: 22-279-0042
Report Date: 10/17/2022

Sample Results

A-1-KIT-KF(1)-F

Date Collected 10/06/2022 07:05 **WPA Lab No** 76866
Date Received 10/06/2022 13:50 **Matrix** Aqueous

EPA-200.8 (DW)

Prep Date	Prep Batch	Prep Method	Sample	Dilution	Analysis Date	By	Analytical Batch
10/12/2022 09:38	L642224	EPA-200.8	50 mL	1	10/12/2022 15:11:45	JTR	L643046

CAS#	Parameter	Result	MQL	Units
7439-92-1	Lead	1.41	0.500	µg/L

A-1-KIT-KF(3L)-F

Date Collected 10/06/2022 07:06 **WPA Lab No** 76867
Date Received 10/06/2022 13:50 **Matrix** Aqueous

EPA-200.8 (DW)

Prep Date	Prep Batch	Prep Method	Sample	Dilution	Analysis Date	By	Analytical Batch
10/12/2022 09:38	L642224	EPA-200.8	50 mL	1	10/12/2022 15:13:34	JTR	L643046

CAS#	Parameter	Result	MQL	Units
7439-92-1	Lead	1.43	0.500	µg/L

A-1-KIT-KF(4M)-F

Date Collected 10/06/2022 07:07 **WPA Lab No** 76868
Date Received 10/06/2022 13:50 **Matrix** Aqueous

EPA-200.8 (DW)

Prep Date	Prep Batch	Prep Method	Sample	Dilution	Analysis Date	By	Analytical Batch
10/12/2022 09:38	L642224	EPA-200.8	50 mL	1	10/12/2022 15:15:24	JTR	L643046

CAS#	Parameter	Result	MQL	Units
7439-92-1	Lead	2.05	0.500	µg/L

Qualifiers/ Definitions

MDL Method Detection Limit

MQL Method Quantitation Limit

Project St. James Episcopal Day School
Information:

Report Number: 22-279-0042
Report Date: 10/17/2022

Sample Results

A-1-KIT-PF(fixed)-F

Date Collected 10/06/2022 07:08 **WPA Lab No** 76869
Date Received 10/06/2022 13:50 **Matrix** Aqueous

EPA-200.8 (DW)

Prep Date	Prep Batch	Prep Method	Sample	Dilution	Analysis Date	By	Analytical Batch
10/12/2022 09:38	L642224	EPA-200.8	50 mL	1	10/12/2022 15:17:14	JTR	L643046

CAS#	Parameter	Result	MQL	Units
7439-92-1	Lead	4.09	0.500	µg/L

A-1-KIT-PF(swing)-F

Date Collected 10/06/2022 07:09 **WPA Lab No** 76870
Date Received 10/06/2022 13:50 **Matrix** Aqueous

EPA-200.8 (DW)

Prep Date	Prep Batch	Prep Method	Sample	Dilution	Analysis Date	By	Analytical Batch
10/12/2022 09:38	L642224	EPA-200.8	50 mL	1	10/12/2022 15:19:04	JTR	L643046

CAS#	Parameter	Result	MQL	Units
7439-92-1	Lead	2.95	0.500	µg/L

A-1-KIT-Tea-F

Date Collected 10/06/2022 07:11 **WPA Lab No** 76872
Date Received 10/06/2022 13:50 **Matrix** Aqueous

EPA-200.8 (DW)

Prep Date	Prep Batch	Prep Method	Sample	Dilution	Analysis Date	By	Analytical Batch
10/12/2022 09:38	L642224	EPA-200.8	50 mL	1	10/12/2022 15:20:54	JTR	L643046

CAS#	Parameter	Result	MQL	Units
7439-92-1	Lead	2.76	0.500	µg/L

Qualifiers/ Definitions

MDL Method Detection Limit

MQL Method Quantitation Limit

Project Information: St. James Episcopal Day School

Report Number: 22-279-0042
Report Date: 10/17/2022

Sample Results

K-1-118-CF(L)-F

Date Collected 10/06/2022 07:16 **WPA Lab No** 76873
Date Received 10/06/2022 13:50 **Matrix** Aqueous

EPA-200.8 (DW)

Prep Date	Prep Batch	Prep Method	Sample	Dilution	Analysis Date	By	Analytical Batch
10/12/2022 09:38	L642224	EPA-200.8	50 mL	1	10/12/2022 15:22:45	JTR	L643046

CAS#	Parameter	Result	MQL	Units
7439-92-1	Lead	1.63	0.500	µg/L

K-1-118-CF(R)-F

Date Collected 10/06/2022 07:17 **WPA Lab No** 76874
Date Received 10/06/2022 13:50 **Matrix** Aqueous

EPA-200.8 (DW)

Prep Date	Prep Batch	Prep Method	Sample	Dilution	Analysis Date	By	Analytical Batch
10/12/2022 09:38	L642224	EPA-200.8	50 mL	1	10/12/2022 15:29:20	JTR	L643046

CAS#	Parameter	Result	MQL	Units
7439-92-1	Lead	1.69	0.500	µg/L

K-1-Ext120-WC(L)-F

Date Collected 10/06/2022 07:19 **WPA Lab No** 76875
Date Received 10/06/2022 13:50 **Matrix** Aqueous

EPA-200.8 (DW)

Prep Date	Prep Batch	Prep Method	Sample	Dilution	Analysis Date	By	Analytical Batch
10/12/2022 09:38	L642224	EPA-200.8	50 mL	1	10/12/2022 15:31:09	JTR	L643046

CAS#	Parameter	Result	MQL	Units
7439-92-1	Lead	1.55	0.500	µg/L

Qualifiers/ Definitions

MDL Method Detection Limit

MQL Method Quantitation Limit

Project Information: St. James Episcopal Day School

Report Number: 22-279-0042
Report Date: 10/17/2022

Sample Results

K-1-111-F-F

Date Collected 10/06/2022 07:21 **WPA Lab No** 76876
Date Received 10/06/2022 13:50 **Matrix** Aqueous

EPA-200.8 (DW)

Prep Date	Prep Batch	Prep Method	Sample	Dilution	Analysis Date	By	Analytical Batch
10/12/2022 09:38	L642224	EPA-200.8	50 mL	1	10/12/2022 15:32:57	JTR	L643046

CAS#	Parameter	Result	MQL	Units
7439-92-1	Lead	1.80	0.500	µg/L

K-1-100-CF(L)-F

Date Collected 10/06/2022 07:24 **WPA Lab No** 76877
Date Received 10/06/2022 13:50 **Matrix** Aqueous

EPA-200.8 (DW)

Prep Date	Prep Batch	Prep Method	Sample	Dilution	Analysis Date	By	Analytical Batch
10/12/2022 09:38	L642224	EPA-200.8	50 mL	1	10/12/2022 15:34:46	JTR	L643046

CAS#	Parameter	Result	MQL	Units
7439-92-1	Lead	1.71	0.500	µg/L

K-1-100-CF(R)-F

Date Collected 10/06/2022 07:25 **WPA Lab No** 76878
Date Received 10/06/2022 13:50 **Matrix** Aqueous

EPA-200.8 (DW)

Prep Date	Prep Batch	Prep Method	Sample	Dilution	Analysis Date	By	Analytical Batch
10/12/2022 09:38	L642224	EPA-200.8	50 mL	1	10/12/2022 15:36:36	JTR	L643046

CAS#	Parameter	Result	MQL	Units
7439-92-1	Lead	1.82	0.500	µg/L

Qualifiers/ Definitions

MDL Method Detection Limit

MQL Method Quantitation Limit

Project St. James Episcopal Day School
Information:

Report Number: 22-279-0042
Report Date: 10/17/2022

Sample Results

K-1-102-CF(L)-F

Date Collected 10/06/2022 07:28 **WPA Lab No** 76879
Date Received 10/06/2022 13:50 **Matrix** Aqueous

EPA-200.8 (DW)

Prep Date	Prep Batch	Prep Method	Sample	Dilution	Analysis Date	By	Analytical Batch
10/12/2022 09:38	L642224	EPA-200.8	50 mL	1	10/12/2022 15:38:25	JTR	L643046

CAS#	Parameter	Result	MQL	Units
7439-92-1	Lead	1.79	0.500	µg/L

K-1-102-CF(R)-F

Date Collected 10/06/2022 07:29 **WPA Lab No** 76880
Date Received 10/06/2022 13:50 **Matrix** Aqueous

EPA-200.8 (DW)

Prep Date	Prep Batch	Prep Method	Sample	Dilution	Analysis Date	By	Analytical Batch
10/12/2022 09:38	L642224	EPA-200.8	50 mL	1	10/12/2022 15:40:15	JTR	L643046

CAS#	Parameter	Result	MQL	Units
7439-92-1	Lead	1.84	0.500	µg/L

K-1-104-CF(L)-F

Date Collected 10/06/2022 07:32 **WPA Lab No** 76881
Date Received 10/06/2022 13:50 **Matrix** Aqueous

EPA-200.8 (DW)

Prep Date	Prep Batch	Prep Method	Sample	Dilution	Analysis Date	By	Analytical Batch
10/12/2022 09:38	L642224	EPA-200.8	50 mL	1	10/12/2022 15:42:05	JTR	L643046

CAS#	Parameter	Result	MQL	Units
7439-92-1	Lead	1.91	0.500	µg/L

Qualifiers/ Definitions

MDL Method Detection Limit

MQL Method Quantitation Limit

Project St. James Episcopal Day School
Information:

Report Number: 22-279-0042
Report Date: 10/17/2022

Sample Results

K-1-104-CF(R)-F

Date Collected 10/06/2022 07:33 **WPA Lab No** 76882
Date Received 10/06/2022 13:50 **Matrix** Aqueous

EPA-200.8 (DW)

Prep Date	Prep Batch	Prep Method	Sample	Dilution	Analysis Date	By	Analytical Batch
10/12/2022 09:38	L642224	EPA-200.8	50 mL	1	10/12/2022 15:43:55	JTR	L643046

CAS#	Parameter	Result	MQL	Units
7439-92-1	Lead	1.70	0.500	µg/L

K-1-106-CF(L)-F

Date Collected 10/06/2022 07:36 **WPA Lab No** 76883
Date Received 10/06/2022 13:50 **Matrix** Aqueous

EPA-200.8 (DW)

Prep Date	Prep Batch	Prep Method	Sample	Dilution	Analysis Date	By	Analytical Batch
10/12/2022 09:38	L642224	EPA-200.8	50 mL	1	10/12/2022 15:45:46	JTR	L643046

CAS#	Parameter	Result	MQL	Units
7439-92-1	Lead	1.77	0.500	µg/L

K-1-106-CF(R)-F

Date Collected 10/06/2022 07:37 **WPA Lab No** 76884
Date Received 10/06/2022 13:50 **Matrix** Aqueous

EPA-200.8 (DW)

Prep Date	Prep Batch	Prep Method	Sample	Dilution	Analysis Date	By	Analytical Batch
10/12/2022 09:38	L642225	EPA-200.8	50 mL	1	10/12/2022 15:59:38	JTR	L643046

CAS#	Parameter	Result	MQL	Units
7439-92-1	Lead	1.76	0.500	µg/L

Qualifiers/ Definitions

MDL Method Detection Limit

MQL Method Quantitation Limit

Project Information: St. James Episcopal Day School

Report Number: 22-279-0042
Report Date: 10/17/2022

Sample Results

K-1-108-CF(L)-F

Date Collected 10/06/2022 07:40 **WPA Lab No** 76885
Date Received 10/06/2022 13:50 **Matrix** Aqueous

EPA-200.8 (DW)

Prep Date	Prep Batch	Prep Method	Sample	Dilution	Analysis Date	By	Analytical Batch
10/12/2022 09:38	L642225	EPA-200.8	50 mL	1	10/12/2022 16:01:28	JTR	L643046

CAS#	Parameter	Result	MQL	Units
7439-92-1	Lead	2.01	0.500	µg/L

K-1-108-CF(R)-F

Date Collected 10/06/2022 07:41 **WPA Lab No** 76886
Date Received 10/06/2022 13:50 **Matrix** Aqueous

EPA-200.8 (DW)

Prep Date	Prep Batch	Prep Method	Sample	Dilution	Analysis Date	By	Analytical Batch
10/12/2022 09:38	L642225	EPA-200.8	50 mL	1	10/12/2022 16:03:17	JTR	L643046

CAS#	Parameter	Result	MQL	Units
7439-92-1	Lead	1.97	0.500	µg/L

Qualifiers/ Definitions

MDL Method Detection Limit

MQL Method Quantitation Limit

Quality Control Data

Client ID: Matrix New World Engineering
Project Description: St. James Episcopal Day School
Report No: 22-279-0042

QC Prep: L642224 **QC Analytical Batch(es):** L643046
QC Prep Batch Method: EPA-200.8 **Analysis Method:** EPA-200.8 (DW)
Analysis Description: Metals Analyses

Lab Reagent Blank LRB-L642224 Matrix: AQU
Associated Lab Samples: 76866, 76867, 76868, 76869, 76870, 76872, 76873, 76874, 76875, 76876, 76877, 76878, 76879, 76880, 76881, 76882, 76883

Parameter	Units	Blank Result	MQL	Analyzed
Lead	µg/L	< 0.500	0.500	10/12/22 15:03

Laboratory Control Sample LCS-L642224

Parameter	Units	Spike Conc.	LCS Result	LCS %Rec	% Rec Limits
Lead	µg/L	50.0	50.1	100	85-115

Matrix Spike & Matrix Spike Duplicate A 76883-MS-L642224 A 76883-MSD-L642224

Parameter	Units	Result	MS Spike Conc.	MSD Spike Conc.	MS Result	MSD Result	MS %Rec	MSD %Rec	%Rec Limits	RPD	Max RPD
Lead	µg/L	1.77	50.5	50.5	48.3	49.9	92.0	95.0	70-130	3.2	20.0

Quality Control Data

Client ID: Matrix New World Engineering
Project Description: St. James Episcopal Day School
Report No: 22-279-0042

QC Prep: L642225 **QC Analytical Batch(es):** L643046
QC Prep Batch Method: EPA-200.8 **Analysis Method:** EPA-200.8 (DW)
Analysis Description: Metals Analyses

Lab Reagent Blank LRB-L642225 Matrix: AQU
Associated Lab Samples: 76884, 76885, 76886

Parameter	Units	Blank Result	MQL	Analyzed
Lead	µg/L	< 0.500	0.500	10/12/22 15:49

Laboratory Control Sample LCS-L642225

Parameter	Units	Spike Conc.	LCS Result	LCS %Rec	% Rec Limits
Lead	µg/L	50.0	49.9	100	85-115

Matrix Spike & Matrix Spike Duplicate Q 92033-MS-L642225 Q 92033-MSD-L642225

Parameter	Units	Result	MS Spike Conc.	MSD Spike Conc.	MS Result	MSD Result	MS %Rec	MSD %Rec	%Rec Limits	RPD	Max RPD
Lead	µg/L	< 0.505	50.5	50.5	48.9	48.5	96.0	95.0	70-130	0.8	20.0

Shipment Receipt Form

Customer Number: **01312**

Customer Name: **Matrix New World Engineering**

Report Number: **22-279-0042**

Shipping Method

<input type="radio"/> Fed Ex	<input type="radio"/> US Postal	<input checked="" type="radio"/> Lab	<input type="radio"/> Other :	<input type="text"/>
<input type="radio"/> UPS	<input type="radio"/> Client	<input type="radio"/> Courier	Thermometer ID:	<input type="text"/>

Shipping container/cooler uncompromised?	<input checked="" type="radio"/> Yes	<input type="radio"/> No
Number of coolers/boxes received	<input type="text" value="1"/>	
Custody seals intact on shipping container/cooler?	<input type="radio"/> Yes	<input type="radio"/> No <input checked="" type="radio"/> Not Present
Custody seals intact on sample bottles?	<input type="radio"/> Yes	<input type="radio"/> No <input checked="" type="radio"/> Not Present
Chain of Custody (COC) present?	<input checked="" type="radio"/> Yes	<input type="radio"/> No
COC agrees with sample label(s)?	<input checked="" type="radio"/> Yes	<input type="radio"/> No
COC properly completed	<input checked="" type="radio"/> Yes	<input type="radio"/> No
Samples in proper containers?	<input checked="" type="radio"/> Yes	<input type="radio"/> No
Sample containers intact?	<input checked="" type="radio"/> Yes	<input type="radio"/> No
Sufficient sample volume for indicated test(s)?	<input checked="" type="radio"/> Yes	<input type="radio"/> No
All samples received within holding time?	<input checked="" type="radio"/> Yes	<input type="radio"/> No
Cooler temperature in compliance?	<input checked="" type="radio"/> Yes	<input type="radio"/> No
Cooler/Samples arrived at the laboratory on ice. Samples were considered acceptable as cooling process had begun.	<input type="radio"/> Yes	<input checked="" type="radio"/> No
Water - Sample containers properly preserved	<input checked="" type="radio"/> Yes	<input type="radio"/> No <input type="radio"/> N/A
Water - VOA vials free of headspace	<input type="radio"/> Yes	<input type="radio"/> No <input checked="" type="radio"/> N/A
Trip Blanks received with VOAs	<input type="radio"/> Yes	<input type="radio"/> No <input checked="" type="radio"/> N/A
Soil VOA method 5035 – compliance criteria met	<input type="radio"/> Yes	<input type="radio"/> No <input checked="" type="radio"/> N/A
<input type="checkbox"/> High concentration container (48 hr)	<input type="checkbox"/> Low concentration EnCore samplers (48 hr)	
<input type="checkbox"/> High concentration pre-weighed (methanol -14 d)	<input type="checkbox"/> Low conc pre-weighed vials (Sod Bis -14 d)	
Special precautions or instructions included?	<input type="radio"/> Yes	<input checked="" type="radio"/> No

Comments:

Signature:

Date & Time:



Kit ID:	192426
Initiated By:	Amy Jackson
Initiated Date:	10/3/2022
Project Comment	

CHAIN-OF-CUSTODY



Matrix New World Engineering
St. James Episcopal Day School

22-279-0042
01312
10-06-2022
17:54:01

Company Name	Company Number	Client Project Manager/Contact	Purchase Order Number
Matrix New World Engineering	01312	Ms. Dawn Brown	
Site Name	Project Number	<input type="checkbox"/> RUSH – Additional charges apply <input type="checkbox"/> Special Detection Limits(s) Date Results Needed	Method of Shipment <input type="checkbox"/> Fed Ex <input type="checkbox"/> UPS <input type="checkbox"/> USPS <input type="checkbox"/> Courier <input type="checkbox"/> Client Drop Off Other
St. James Episcopal Day School			
LIMS Project ID	Project Manager Phone #	Project Manager Email	Site/Facility ID #
	225-292-3271	dbrown@mnwe.com	

Date	Time	Sample ID	Matrix	Grab/Comp	# of Cont	Container Type	Preservation	Analyses
10/6/22	0705	A-1-KIT-KF(1)-F 76866 76838 BH	Aqueous		1	Plastic - 250ml	HNO3 - Nitric Acid	200.8 - Lead in DW
10/6/22	0706	A-1-KIT-KF(3L)-F 76867 76839 BH	Aqueous		1	Plastic - 250ml	HNO3 - Nitric Acid	200.8 - Lead in DW
10/6/22	0707	A-1-KIT-KF(4M)-F 76868 76840 BH	Aqueous		1	Plastic - 250ml	HNO3 - Nitric Acid	200.8 - Lead in DW
10/6/22	0708	A-1-KIT-PF(fixed)-F 76869 76841 BH	Aqueous		1	Plastic - 250ml	HNO3 - Nitric Acid	200.8 - Lead in DW
10/6/22	0709	A-1-KIT-PF(swing)-F 76870 76842 BH	Aqueous		1	Plastic - 250ml	HNO3 - Nitric Acid	200.8 - Lead in DW
10/6/22	0710	A-1-KIT-KF(5M)-F 76871 76843 BH	Aqueous		1	Plastic - 250ml	HNO3 - Nitric Acid	200.8 - Lead in DW
10/6/22	0711	A-1-KIT-Tea-F 76872 76844 BH	Aqueous		1	Plastic - 250ml	HNO3 - Nitric Acid	200.8 - Lead in DW
10/6/22	0712	K-1-118-CF(L)-F 76873 76845 BH	Aqueous		1	Plastic - 250ml	HNO3 - Nitric Acid	200.8 - Lead in DW

For Laboratory Use Only			Sampled by (Name - Print)	Client Remarks/Comments				
Ice	Custody	Lab Comments	Jody Smith					
Y/N	Seals	Sample was not received, per Maggie Turner. Sample was left with client. -BH Ambient	Relinquished by: (SIGNATURE)	Date	Time	Received by: (SIGNATURE)	Date	Time
	Y/N							
			Relinquished by: (SIGNATURE)	Date	Time	Received by: (SIGNATURE)	Date	Time
Blank/Cooler Temp			Relinquished by: (SIGNATURE)	Date	Time	Received by: (SIGNATURE)	Date	Time



Kit ID:	192426
Initiated By:	Amy Jackson
Initiated Date:	10/3/2022
Project Comment	

CHAIN-OF-CUSTODY

Company Name	Company Number	Client Project Manager/Contact	Purchase Order Number
Matrix New World Engineering	01312	Ms. Dawn Brown	
Site Name	Project Number	<input type="checkbox"/> RUSH – Additional charges apply <input type="checkbox"/> Special Detection Limits(s) Date Results Needed	Method of Shipment <input type="checkbox"/> Fed Ex <input type="checkbox"/> UPS <input type="checkbox"/> USPS <input type="checkbox"/> Courier <input type="checkbox"/> Client Drop Off Other
St. James Episcopal Day School			
LIMS Project ID	Project Manager Phone #	Project Manager Email	Site/Facility ID #
	225-292-3271	dbrown@mnwe.com	

Date	Time	Sample ID	Matrix	Grab/Comp	# of Cont	Container Type	Preservation	Analyses
10/6/22	0717	K-1-118-CF(R)-F 76874	Aqueous		1	Plastic - 250ml	HNO3 - Nitric Acid	200.8 - Lead in DW
10/6/22	0719	K-1-Ext120-WC(L)-F 76875	Aqueous		1	Plastic - 250ml	HNO3 - Nitric Acid	200.8 - Lead in DW
10/6/22	0721	K-1-111-F-F 76876	Aqueous		1	Plastic - 250ml	HNO3 - Nitric Acid	200.8 - Lead in DW
10/6/22	0724	K-1-100-CF(L)-F 76877	Aqueous		1	Plastic - 250ml	HNO3 - Nitric Acid	200.8 - Lead in DW
10/6/22	0725	K-1-100-CF(R)-F 76878	Aqueous		1	Plastic - 250ml	HNO3 - Nitric Acid	200.8 - Lead in DW
10/6/22	0728	K-1-102-CF(L)-F 76879	Aqueous		1	Plastic - 250ml	HNO3 - Nitric Acid	200.8 - Lead in DW
10/6/22	0729	K-1-102-CF(R)-F 76880	Aqueous		1	Plastic - 250ml	HNO3 - Nitric Acid	200.8 - Lead in DW
10/6/22	0732	K-1-104-CF(L)-F 76881	Aqueous		1	Plastic - 250ml	HNO3 - Nitric Acid	200.8 - Lead in DW

For Laboratory Use Only			Sampled by (Name - Print)		Client Remarks/Comments				
Ice	Custody Seals	Lab Comments	Jody Smith						
BH Y/N	Y/N		Relinquished by: (SIGNATURE)		Date	Time	Received by: (SIGNATURE)	Date	Time
			Kathy Hendrix		10/6/22	0800	Kathy Hendrix	10/6/22	0800
			Relinquished by: (SIGNATURE)		Date	Time	Received by: (SIGNATURE)	Date	Time
Blank/Cooler Temp			Kathy Hendrix 10/6/22 1350		Brandi Hidalgo		10-6-22 1350		
Ambient			Relinquished by: (SIGNATURE)		Date	Time	Received by: (SIGNATURE)	Date	Time



Kit ID:	192426
Initiated By:	Amy Jackson
Initiated Date:	10/3/2022
Project Comment	

CHAIN-OF-CUSTODY

Company Name		Company Number		Client Project Manager/Contact		Purchase Order Number	
Matrix New World Engineering		01312		Ms. Dawn Brown			
Site Name		Project Number		<input type="checkbox"/> RUSH – Additional charges apply <input type="checkbox"/> Special Detection Limits(s) Date Results Needed		Method of Shipment	
St. James Episcopal Day School						<input type="checkbox"/> Fed Ex <input type="checkbox"/> UPS <input type="checkbox"/> USPS <input type="checkbox"/> Courier <input type="checkbox"/> Client Drop Off Other	
LIMS Project ID		Project Manager Phone #		Project Manager Email		Site/Facility ID #	
		225-292-3271		dbrown@mnwe.com			

Date	Time	Sample ID	Matrix	Grab/Comp	# of Cont	Container Type	Preservation	Analyses
10/6/22	0733	K-1-104-CF(R)-F 76882	Aqueous		1	Plastic - 250ml	HNO3 - Nitric Acid	200.8 - Lead in DW
10/6/22	0736	K-1-106-CF(L)-F 76883	Aqueous		1	Plastic - 250ml	HNO3 - Nitric Acid	200.8 - Lead in DW
10/6/22	0737	K-1-106-CF(R)-F 76884	Aqueous		1	Plastic - 250ml	HNO3 - Nitric Acid	200.8 - Lead in DW
10/6/22	0740	K-1-108-CF(L)-F 76885	Aqueous		1	Plastic - 250ml	HNO3 - Nitric Acid	200.8 - Lead in DW
10/6/22	0741	K-1-108-CF(R)-F 76886	Aqueous		1	Plastic - 250ml	HNO3 - Nitric Acid	200.8 - Lead in DW

For Laboratory Use Only			Sampled by (Name - Print)		Client Remarks/Comments				
Ice	Custody Seals	Lab Comments	Jody Smith						
Y/N	Y/N		Relinquished by: (SIGNATURE)		Date	Time	Received by: (SIGNATURE)	Date	Time
			Dawn Brown		10/6/22	0800	Kathy Hendrix	10/6/22	0800
			Relinquished by: (SIGNATURE)		Date	Time	Received by: (SIGNATURE)	Date	Time
Blank/Cooler Temp			Kathy Hendrix 10/6/22 1350				Brandi Hidalgo	10-6-22	1350
Ambient			Relinquished by: (SIGNATURE)		Date	Time	Received by: (SIGNATURE)	Date	Time

Amy,

That sample bottle must have been forgotten on our end. Please go ahead and run the other samples as usual and you can mark through that one on the COC.

Thanks

Maggie Turner
Regulatory Specialist

Matrix New World Engineering
2798 O'Neal Lane, Building F
Baton Rouge, LA 70816
C: [318.278.4127](tel:318.278.4127)

MATRIX**NEW****WORLD**
Engineering Progress

www.mnwe.com

Certified WBE

From: Amy Jackson <ajackson@waypointanalytical.com>
Sent: Friday, October 7, 2022 9:33 AM
To: Dawn Brown <dbrown@mnwe.com>; Maggie Turner <mturner@mnwe.com>
Cc: Brandi Hidalgo <bhidalgo@waypointanalytical.com>
Subject: Fwd: Matrix New World St. James Episcopal Day School **Missing Sample**

[EXTERNAL]

Good morning,

We are missing sample A-1-KIT-KF(5M)-F from the St. James Episcopal Day School project. Please advise.

Amy Jackson

Project Manager

[504-350-0893](tel:504-350-0893)

>>> Brandi Hidalgo 10/7/2022 9:24 AM >>>

Good morning Amy,

After inventorying the Matrix 200.8 - Lead bottles for St. James Episcopal Day School, we have 1 missing bottle for sample ID **A-1-KIT-KF(5M)-F**

External E-mail. Use caution if opening Links and Attachments.

If this is an unsolicited spam message or you suspect it is malicious, please forward as an attachment to suspiciousemail@wpacorp.com

ATTACHMENT 2

ESTABLISHING ROUTINE PRACTICES

(Module 6 of EPA's 3Ts Manual)

Establishing Routine Practices

Schools and child care facilities should establish routine practices to reduce exposure to elevated lead levels and other environmental hazards (e.g., bacteria). **These activities should not be conducted immediately prior to collecting a water sample but should be planned as part of the school's or child care facility's overall water management program to improve drinking water quality.** Below are examples of routine activities that should be conducted to prevent exposure to drinking water contaminants:

Module 1

Module 2

Module 3

Module 4

Module 5

Module 6

Module 7

Cleaning

- Clean drinking water fountains regularly. Consider posting a cleaning time card by the water fountains to allow the cleaning times to be recorded.
- Create an aerator (faucet screen) and water fountain strainer cleaning maintenance schedule and clean debris from all accessible aerators and strainers frequently. Establish a recordkeeping procedure to record when the aerators and strainers are cleaned.
- Consider setting a reminder on the calendar to notify the maintenance staff when it is time to clean the aerators and water fountain strainers.

Temperature Control

- Use only cold water for food and beverage preparation. Hot water will dissolve lead more quickly than cold water and may contain increased lead levels.
- If hot water is needed, it should be taken from the cold water faucet and heated on a stove or in a microwave oven. Consider creating notices that can be posted in the food and beverage preparation areas to remind students and staff to use cold water.

Point-of-Use Filter Maintenance

- If POU devices have been installed, make sure they are maintained. An example of a POU device is a filter on a faucet or within a drinking water fountain or water bottle filler.
- Ensure that the selected POU device is certified to remove lead (or any other contaminants of concern). To select a lead-reducing POU filter, check with the manufacturer or a third-party website (such as nsf.org or wqa.org) to verify the product was tested and certified against NSF/ANSI Standard 53 (for lead removal). For additional protection for particulate lead, look for a POU filter

that is also certified against NSF/ANSI Standard 42 (for class I particulate reduction, 0.5 µm to <1 µm).

- Consider setting a reminder on the calendar when it is time to change the filter.

Cross-Connections Control

- Evaluate the facility for the presence of cross-connections (e.g., connections of nonpotable water to potable sources) and address any issues.

Communication

- Create and post placards near bathroom sinks with notices that water should not be consumed. As an example, indicate that a sink is a hand-washing only sink to prevent students and staff from misunderstanding and utilizing sinks for brushing teeth, washing food or other activities that ultimately result in water being consumed.
- Use pictures if there are small children using bathrooms.
- Consider organizing an event for the community to explain how everyone can help.

Routine Flushing Practices

- Regularly flush all water outlets used for drinking or food preparation, particularly after weekends and long vacations when water may have been stagnant for a long period of time.
- Flushing involves opening valves and faucets and letting the water run to remove water that has been standing in the interior pipes and/or the outlets. The flushing time varies by the type of outlet being cleared.
- Be careful not to flush too many outlets at once. This could dislodge sediments that might create further lead problems, or it could reduce pressure in the system below safe levels. If the flow from outlets is reduced noticeably during flushing, too many outlets have likely been turned on at once.



Module 1

Module 2

Module 3

Module 4

Module 5

Module 6

Module 7

Flushing Directions by Outlet Type

Remember that each drinking water outlet should be flushed individually; flushing a toilet will not flush the water fountains. All flushing should be recorded in a log submitted to the individual in charge of this program.

Locate the faucet furthest away from the service line on each wing and floor of the building, open the faucets wide, and let the water run for 10 minutes. For best results, calculate the volume of the plumbing and the flow rate at the tap and adjust the flushing time accordingly. This 10-minute time-frame is considered adequate for most buildings.

Open valves at all drinking water fountains without refrigeration units and let the water run for roughly 30 seconds to one minute, or until cold.

Let the water run on all refrigerated water fountains for 15 minutes. Because of the long time period required, routinely flushing refrigerated fountains may not be feasible. It may therefore be necessary, and more economical, to replace these outlets with “lead-free” NSF-approved devices.

Open all kitchen faucets (and other faucets where water will be used for drinking and/or cooking) and let the water run for 30 seconds to one minute, or until cold.

Flushing is not recommended as a practical remedy for water coolers.

Module 1

Module 2

Module 3

Module 4

Module 5

Module 6

Module 7



Communication Plan: Your continual effort to improve water quality in your facility will be of interest to parents, staff, and the community. Consider sending updates in newsletters.

Don't forget to maintain a record!

Record schedules for upkeep and maintenance and set calendar reminders to help you keep on schedule.

