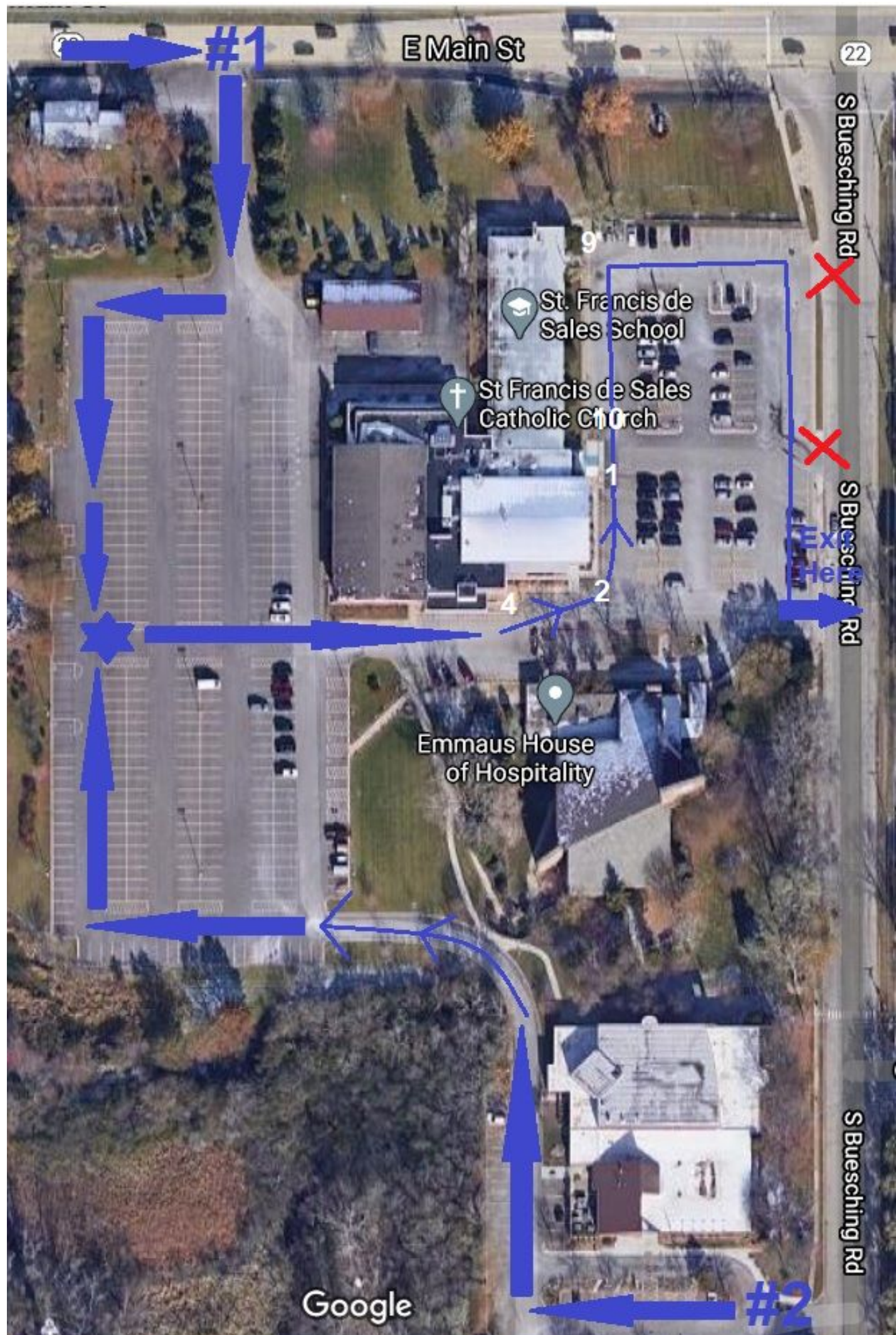


Arrival Map and Drop-off Line Information - Revised 8-17-2020

- The drop-off window is from 7:10am to 7:45am. In order to avoid congestion we suggest that families aim to drop-off during the following smaller windows:
 - 7:10am-7:20am - Families needing the earliest drop-off
 - 7:20am-7:25am - Families with last name A-G
 - 7:25am-7:30am - Families with last name H-N
 - 7:30am-7:35am - Families with last name O-S
 - 7:35am-7:45am - Families with last name T-Z
- Please enter the parking lot at blue #1 or blue #2. If attempting to enter at #1 and the line is close to Route 22 please enter at #2 instead.
- Follow the car in front of you along the blue line with directional arrows.
- At the blue 6 point star please alternate cars as the two entrances combine to form one line.
- Stop at the doors as needed in the order in which they occur on the blue path (4,2,1,10,9).
 - Classroom drop-off assignments:
 - Door 9 (Doors closest to Route 22) - Hensley, 1st Grade, 5th-6th grade
 - Door 10 (Doors to the right of Old Gym doors) - Schaal, 2nd-4th grade, 7th-8th grade
 - Door 1 (Main door) - Before care, Buss
 - Door 2 (Nearest Kindergarten) - Colletti
 - Door 4 (Near New Gym) - Dunne
- Exit on Buesching Rd at the southernmost exit. Do not exit at either red X.
- **Students should be ready to exit the car quickly** and proceed to the wellness check. Parents should remain in the vehicle.
- Please wait for a wave or heads up from the faculty member before pulling away from the door.
- Teachers will hold attendance until the drop-off line has completed. Student are not tardy if drop off occurs after 7:40am due to the drop-off line.



Pick Up Procedures

- Dismissal starts at 2:00pm (or 12:00pm on half days)
 - Families with last names beginning with A through I should pick up between 2:00 and 2:15pm and park in Lot A (12:00-12:15pm on half days)
 - Families with last names beginning with J through M should pick up between 2:00 and 2:15pm and park in Lot B (12:00-12:15pm on half days)
 - Families with last names beginning with N through U should be picked up between 2:15 and 2:30pm and park in Lot A (12:15-12:30pm on half days)
 - Families with last names beginning with V through Z should be picked up between 2:15 and 2:30pm and park in Lot B (12:15-12:30pm on half days)

Last Names	Time	Lot
A-I	2-2:15pm	A (Behind the school)
J-M	2:-2:15pm	B (Front of the school)
N-U	2:15-2:30pm	A (Behind the school)
V-Z	2:15-2:30pm	B (Front of the school)

- Parents are asked to park facing the school in designated parking spots with their last name visible on the windshield.
- Students will be called to exit by family.
- Students will exit the same door they entered through.
- Temperatures will be taken at dismissal. Parents/guardians of any students with a temperature of 100.4 or higher will be notified. These students may not return to school the following day. (see Wellness Protocols Section)
- Parents remain in vehicles. Parents should not congregate outside school exits.
- Please use the map below as reference. Red indicates entrances and parking areas, blue indicates exits.

Map for Half Days (Including Monday 8-17-2020)

