



1782

SAINT MARY MESSENGER

The Newsletter for Alumni, Parents and Friends of
Saint Mary Interparochial School

CELEBRATING THE CONTINUAL GROWTH OF OUR ST. MARY COMMUNITY



IN THIS ISSUE

- | | |
|------------------------------------------------------------|----------------------------|
| 2 From the Principal | 7 Alumni Circle News |
| 3 From the Board Chair
Board of Limited
Jurisdiction | 8 Storm Sports Report |
| 4 STEAM | 10 Annual Report 2021-2022 |
| 5 Soiree | 12 Annual Report of Gifts |
| 6 15th Annual
Harvest Hoedown | 16 Annual Giving Campaign |

FROM THE PRINCIPAL



Dear Parents, Guardians, Alum, and Supporters of St. Mary Interparochial School,

Happy 2022!

As we step into a new year together, I encourage you to reflect on all of the amazing things God continues to provide for us. Even with the

unique challenges that have stemmed from the COVID-19 pandemic, St. Mary Interparochial School is truly blessed to share that these last several months have been brimming with many exciting lessons and immeasurable learning opportunities. Even with all of the changes that have occurred since March 2020, what remains constant is the resiliency, adaptability, creativity, patience, and dedication of our faculty, staff, students, and families at St. Mary Interparochial School.

As I reflect on this school year, I'm reminded of how much we have positively grown as a school since the beginning of the pandemic. Our growth has fostered and sustained a number of incredible initiatives. Our school-wide Mindfulness initiative, now in its second year, has supported our students' physical health, mental health, and emotional regulation. Our continued partnership with Thomas Jefferson University and Greener Partners focuses on building mindfulness through health and the positive development of our students' bodies, minds, and hearts. One newest initiative this year is our partnership with the Philadelphia Outward Bound School. Through a generous grant from the Connelly Foundation, the Philadelphia Outward Bound School has provided both teacher professional development and immeasurable learning opportunities for our students. In October 2021, our 8th Grade students participated in a 5-day expedition at the Delaware River Water Gap. In this expedition, our students went camping, hiking, rock climbing, and learned many life skills and leadership skills while in the wilderness. These experiences allow our students to grow into passionate, confident, Christ-centered leaders, who are prepared for any possible future.

This school year, St. Mary Interparochial School began some new traditions, while also keeping to heart some of our valued traditions. We held our first annual, "Black Sweater" Mass in October 2021. At St. Mary Interparochial School, the black sweater signifies that our students are members of our exceptional middle school program. Each year, all 5th Grade students will receive a gift of a black sweater from St. Mary's, as a token of our appreciation for their hard work, and to signify their official transition into our middle school program. This being our inaugural year for this new tradition, we included our 6th, 7th, and 8th Grade classes as well. These black sweaters are special because they are embroidered with the students' graduation year. Holding true to some of the lasting traditions, we were very fortunate to host our annual Harvest Hoedown, our All Saints Day pageant and luncheon, our Mass for Our Lady of Guadalupe, and Las Posadas, even with the challenges presented by the pandemic. Special thanks to PJ Clarke's Restaurant for the complimentary lunch for our littlest saints and eighth grade Big Brothers and Sisters! We look forward to celebrating many more new and valued traditions throughout the remainder of the year.

I am also delighted to share the unique service-learning projects that our students engaged in the first half of this school year. In September, our 7th Grade class led a school-wide drive for those families impacted by the tornado that struck New Jersey, collecting non-perishable food, water, and other necessities. In October and November, our 1st Grade class led a school-wide drive, in partnership with Broad Street Ministry, for men's and women's underwear. All underwear collected was for individuals suffering from homelessness in Philadelphia. In December, 8th and 7th Grade students traveled to Build-A-Bear Workshop to build stuffed animals for children. The bears were donated to the 25th police district to be given to children who are in crisis situations. Lastly, this January and February, the school collected canned goods and other non-perishable items for our Souper Bowl competition. These items were donated to a local food bank.

On behalf of the St. Mary Community, I would like to thank Regina Kelly for serving on our Board of Limited Jurisdiction and our charter Advisory Board. Regina's commitment to the financial health of our school over the past 10 years has been critical to the sustainability of our outstanding academic and faith based program. Regina has served for 11 years as a board member and several years as the Finance Chair. Regina is also the parent of two St. Mary Alum Brigid (Class of 2008) and Franny (Class of 2013). Her compassion and support for St. Mary are very much appreciated, and her presence on our board will be deeply missed. Additionally, I would like to add that we are very excited to celebrate our former pastor delegate, Father John Large, at our Soiree to be held on Thursday, April 7 at the Arts Ballroom. We would love for you to attend and show your support for Father Large and all of the wonderful things he has contributed to the St. Mary Interparochial School community throughout the years.

Whatever the mode of learning required, in-person, hybrid, or virtual, with your support, we are proud to offer a well-rounded, high-quality Catholic education to families from various parishes and zip codes while remaining a crown jewel in the historic heart of Philadelphia. It is our sincere hope that you will continue to share your time, talent, and treasure with our children. My most sincere thanks to you for your investment in Saint Mary Interparochial School and the Christ-centered leaders you are helping to shape for today and tomorrow!

Many blessings,

Ms. Jayda Pugliese

FROM THE BOARD PRESIDENT AND CHAIR



As we move forward in 2022, the world appears to be accepting the reality that the Covid pandemic and the challenges presented by it will be a part of daily life in some shape or

form for the foreseeable future. At St. Mary Interparochial School (SMIPS), we take pride not only in our ability to adapt, but to grow as a school and a community, despite these challenges. One way in which SMIPS has been able to do this is through our growing partnerships within the Community.

For example, SMIPS is currently partnering with Thomas Jefferson University in a two-year initiative to strengthen our students' understanding and view of health and healing. Together, we are aiming to redefine and provide relevant education on healing through mental, physical, and spiritual growth. This initiative continues to bring long-term health practices into our community's mainstream living. Jefferson University is a model professional university born out of a unique merger of Philadelphia University and Thomas Jefferson University. Through their distinctive and award-winning 21st-century curriculum, they are preparing students with the skills they need to succeed and lead now and in the future of work.

Recently, from October 18-22, 2021, our 8th grade students embarked on a Philadelphia Outward Bound School Expedition, which was generously gifted by the Connelly Foundation. These expeditions are based in the outdoors and teach students technical skills like navigation, camp craft, the basics of backpacking or rock climbing, and other similar outdoor activities. As our students learn these skills in challenging situations, they also learn the value of teamwork, compassion for others, and the pursuit of excellence. The grant provided by the Connelly Foundation will provide expeditions

for future students, as well as Professional Development for our faculty and staff.

Our school's partnership with individuals and organizations in the Community stretches far and wide, from the school's involvement with the Greener Partners Program (which teaches students about agriculture and nutrition) to the organizations and individuals that support the school and events essential for our growth, such as City Plumbing and its continued generous sponsorship of the Soiree scheduled for April 7, 2022.

Finally, while the school's growth is often focused on the future, we cannot think of growth without thinking of those important figures from our school's past who have made the school what it is today. At the Soiree on April 7, Reverend John Large will be honored with the Legacy Leader Award. Reverend John Large graciously served as Pastor Delegate at St. Mary Interparochial School from 2014 through 2020. He has retired as pastor of St. Paul's Church and has transferred to another Philadelphia parish where he has been able to help out where he can, but most importantly has taken time to ease into his well-deserved retirement. We will thank Father Large for his years as Pastor Delegate of St. Mary Interparochial School, and for his lively and thoughtful masses that our students and teachers think back on fondly! It is with great honor that St. Mary Interparochial School acknowledges Reverend John Large as its Legacy Leader.

The Board of Limited Jurisdiction (BLJ) continues to meet at scheduled meetings, on the committee level, and on as-needed basis in order to assist with the school's goals and challenges, specifically those objectives relating to our five year Strategic Plan. Recently, an ad hoc Catholic Identity committee was formed to foster the Catholic identity of our school. This will be chaired by former principal Jeanne Meredith. The Advancement Committee continues to

prove to be an invaluable engine in terms of generating financial revenue to advance the goals of the school, as referenced by the Soiree, above. The Buildings and Grounds committee continues to address issues that come to its attention at meetings and inspections, and has recommended and implemented various repairs and remediation at the school, as appropriate. Thanks to the financial stewardship of our Finance Committee, the school remains financially healthy from a budgetary perspective. The Governance Committee has aided in the oversight of the various Committees from a procedural, oversight perspective. The Academic Committee has been re-staffed with new individuals who are able to provide varying K-8 perspectives from different vantage points from across the Philadelphia and Catholic School landscapes.

The past two years have demonstrated that St. Mary's will continue to grow and flourish no matter the challenges presented to the school or the world at large. For that, we thank those partners in the Community who have enabled the school to grow and prosper, even during challenging times.

Best regards,

Michael Detweiler, Esquire
President and Chairman of the Board

Michael L. Detweiler is a member of the Professional Liability Department at Marshall Dennehey where he has defended clients in numerous professional liability and casualty matters. Prior to joining Marshall Dennehey, Michael was Assistant City Solicitor with the City of Philadelphia Law Department for two years. Michael graduated from Dickinson College in 1998 and from Boston College Law School in 2002. He is licensed to practice in Pennsylvania, New Jersey and Massachusetts. Michael and his wife Alexandra are parents of two children, Charles and Gisele.

Members of Board of Limited Jurisdiction

Michael L. Detweiler
Board Chair and President

Jamila Aberdeen
Parent '16 and '20

Richard Autieri
Parent '18 and '19
Board Secretary

Jeannette Howell

Susan Koger
Co-Chair, Walkathon
Parent '25

Alana Lee

Udai Puramsetti
Parent '26

Victoria Rodgers, ESQ

Judge Timothy Savage
United States District Court
Board Vice President

Michael Shapson, ESQ
Parent '20 and '23

Maria Walker
Parent '08 and '12

Jayda Pugliese
Alumna '01
Parent '27

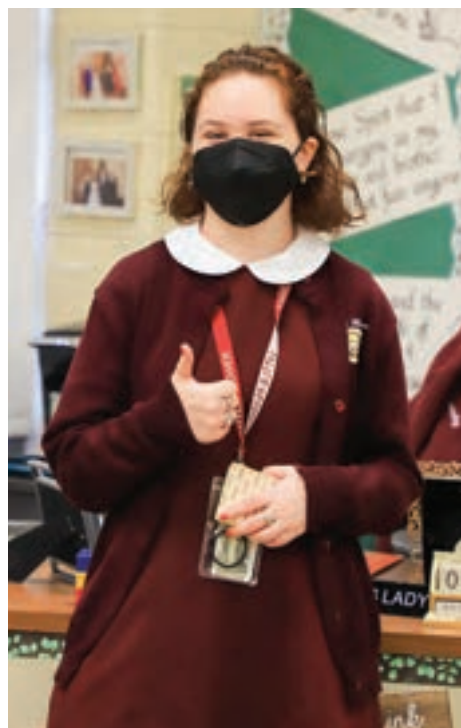
Christina Haciski

STEAM

After a year-long break from our STEAM after school program, we are pleased to welcome back the STEAM program for the 2021-2022 school year! In the fall, over 45 students attended the program and participated in seven different programs. These programs included some recurring favorites, such as Girls on the Run/Heart and Sole, Math-Counts Video Challenge, Chess Club, and Future City, along with some new programs - Reading Club, Board Game Club, and Healthy Heart: Movement and Mindfulness!

The St. Mary STEAM program has always been a robust program that gives our students the opportunity to explore different interests and challenge themselves outside of their classroom environment. We are looking forward to a great winter and spring program with even more new programs for our STEAM students, such as Girls Who Code, Illustration, and Industrial Design!

Our STEAM program is offered on Monday through Thursday, free of charge to students in grades 5 through 8. For more information about our St. Mary STEAM program, email library@saintmarys.us.





A CAMPAIGN TO FUND OUR FACILITY

SAVE THE DATE

THURSDAY, APRIL 7, 2022 | THE ARTS BALLROOM | 7 TO 10 PM

HONORING:

REVEREND JOHN LARGE
Legacy Leader Award

THOMAS JEFFERSON UNIVERSITY
Partner in Academic Excellence

PRESENTED BY CITY PLUMBING

SUPPORT OPPORTUNITIES

Event Sponsor

\$10,000

- Admission for 12 guests with reserved seating
- High profile event signage and prominent program placement for full-page advertisement in event program
- Yearlong recognition in Saint Mary Soirée communications and social media
- Includes sponsorship of the 2022 Walkathon fundraiser

Legacy Sponsor

\$7,500

- Admission for 10 guests with reserved seating
- High profile recognition and full-page advertisement in event program
- Yearlong recognition in Saint Mary Soirée communications and social media
- Includes sponsorship of the 2022 Walkathon fundraiser

Doors of Saint Mary Sponsor

\$5,000

- Admission for 8 guests with reserved seating
- Event recognition and full-page advertisement in event program
- Yearlong recognition in Saint Mary Soirée communications and social media
- Includes sponsorship of the 2022 Walkathon fundraiser

Heart & Rose Sponsor

\$2,500

- Admission for 6 guests
- Event recognition and full-page advertisement in event program
- Yearlong recognition in Saint Mary Soirée communications and social media

Scholars & Leaders Sponsor

\$1,500

- Admission for 4 guests
- Event recognition and half-page advertisement in event program
- Yearlong recognition in Saint Mary Soirée communications

Shining Light Sponsor

\$500

- Admission for 2 guests
- Event recognition and quarter-page advertisement in event program

Event Program Advertisements

SUPPORT LEVEL

SIZE

DIMENSIONS

\$600	Full Page	7.75" x 4.75"
\$300	Half Page	3.875" x 4.75"
\$150	Quarter Page	2.5" x 4.75"
\$75	Line listing in event program for parishes, families, and individuals	—

Advertisement submission deadline is January 7, 2022

All event program advertisements will be in full color
Special event underwriting opportunities are also available. Please inquire if interested.

Please Note:

Please make checks payable to:

St. Mary Interparochial School
Fifth and Locust Streets
Philadelphia, PA 19106

To pay using a credit card or PayPal contact, visit:

https://www.saintmarys.us/support/st_mary_soiree

For more information, to email your advertisement as you would like it to appear, or to make a payment by phone, please contact Elizabeth Montgomery, Advancement Assistant, at emontgomery@saintmarys.us or 215-923-7522.

Proceeds support the St. Mary School program. Thank you!

www.saintmarys.us

15TH ANNUAL HARVEST HOEDOWN



With the support of our St. Mary Community, the 15th Annual Harvest Hoedown raised over \$30,000 in support of St. Mary STREAM Education Programs!

A special thank you to our Presenting Sponsors, Ann B. Zekauskas Family Foundation, Campo's Cheesesteaks, City Plumbing, Harman Deutsch Ohler Architecture, Ralph and Barbara Novotney, as well as all of our sponsors for supporting the Harvest Hoedown. This fall fundraiser, which kicks-off our Annual Giving Campaign each year, supports St. Mary STREAM (Science, Technology, Religion, Engineering, Art, and Math) Education Programs.



The Coval Family

Thanks to our fantastic coordinators along with over 25 parent volunteers and over 20 alumni volunteers, we seamlessly welcomed back our vendors and guests to an in-person Hoedown hosted on Locust Street! Guests enjoyed our traditional Hoedown activities, including the Spooky Boo-tique, Hayride, and Moon Bounce, and more, along with delicious food provided by Cousins Mike, Las Cazuelas, and Steak 'Em Up. Thank you to our food donors for providing us with such great food! One of the highlights of our Hoedown this year was our school-wide Scarecrow decorating contest in honor of Philadelphia's essential workers!

Thank you to all of our sponsors, parent volunteers, donors, classroom captains, teachers, staff, students, and Harvest Hoedown Committee for helping to make this a very special and successful Harvest Hoedown. We look forward to seeing everyone on Locust Street next October!



SAVE THE DATE

20th Annual Walkathon
will be held on

May 20, 2022



ALUMNI CIRCLE NEWS

Are you a St. Mary Alum?

We'd love to hear from you and add you to our ever-growing Alumni Circle! This will give you the opportunity to connect with your own classmates, but will also give you the opportunity to meet and learn about individuals from other classes. Becoming part of our alumni group is a great way to connect to alumni, old and new.

We would like to foster our alumni relationship and make it even stronger by featuring St. Mary Alumni news on our social media platforms. As a new feature, we highlight St. Mary Alumni once a month through our Alumni Spotlight! Submit your Alumni Spotlight News by visiting www.saintmarys.us/about/alumni-circle. We can't wait to hear from you!

Stay tuned for future alumni news and events! To be added to our email list and distribution list, please email alumni@saintmarys.us.



Join the Alumni Circle! *The Alumni Circle is an informal alumni community connecting former classmates and school in a fun and easy way.*

Email alumni@saintmarys.us and provide your name and graduation year



STORM REPORT:

STORM UPDATE 2021-2022

Cross Country

The 2021 Storm Cross Country Team competed in our 2nd season, and had over 29 athletes compete throughout the course of the season. We had athletes from all the grades compete at Belmont Plateau against the entire Philadelphia Area CYO. Our top finishers at the Philadelphia Area Cross Country Championships, which include well over 1500 athletes, were Ella Connolly placing 6th, Jude Keiffer in 13th place and Jonathan Woodton in 8th place in their respective age groups. Also, 3 Storm Runners represented the Philadelphia CYO at the National Championships in Paris, Kentucky. Ella Connolly placed 30th and the Philadelphia CYO All-Star team she competed with finished 3rd against teams across the country. Payton Connolly and Bella Fisher competed, helping their team finish 17th overall.



Volleyball

Volleyball is for girls in 6th-8th grades. This year we had 17 girls participate. We ended the regular season in 2nd place with a record of 9-5. We made it to the Region 6 championship game where we lost a tough match 3-1. Chris Isaacson and Steve DeCesare helped with coaching. We are saying goodbye to three 8th grade players so next year's team will have many returning players and will be a tough team to beat.



Basketball

Our girls' basketball teams have the highest level of participation in recent years. The Varsity team (for seventh and eighth graders), led by coaches Michael Shapson (Maria '20 and Jacquelyn '23) and Steve DeCesare (Lucia '23), has ten players. The Junior Varsity team (for fifth and sixth graders), led by Dan Connelly (Payton '23 and Ella '25) and John Murawski (Sadie '24), has fifteen players. Both teams won their first game before the league suspended play due to COVID. They have been working hard in the meantime to stay prepared for whatever the rest of the season may bring. Having to get creative for gym space, they even took advantage of nice weather early in the season and had an outdoor practice. St. Mary Storm boys' basketball team has started their season! Our JV team is working hard and learning the game. Our Varsity is 3-0 headed into the end of January.





Soccer

During fall 2021 Saint Mary Interparochial 2nd graders participated in soccer at SEYAA. The team was composed of 18 second grade participants, which included both girls and boys. This was the first time many of the students participated in soccer and despite a rough start the kids as a team improved tremendously throughout the season. They ended the season in 8th place out of 11 teams. The Storm team won the

1st round game of the playoffs. The Storm team played hard in the second round of playoffs but were eliminated. The Saint Mary Interparochial second grade team showed heart, determination, good sportsmanship and dedication throughout the season. The Kindergarten and 1st Grade Storm soccer team had a fantastic season! The team improved tremendously through the year. Great things ahead for these student Athletes. Go Storm!



ANNUAL REPORT 2020-2021

THANK YOU FOR SUPPORTING THE STUDENTS OF ST. MARY INTERPAROCHIAL SCHOOL! It is with great honor, that we present the 2020-2021 Annual Report of Gifts. The following pages clearly demonstrate the overwhelming support from our greater school community in making a difference in the preparation of our Christ-centered leaders rooted in God's love. Thank you!

SUMMARY OF GIFTS MAKING A DIFFERENCE FOR 2021-2022

♥
TOTAL
\$366,023.98

♥
Annual Giving:
\$69,523.98

♥
Hoedown:
\$17,850

♥
Walkathon:
\$56,000

♥
Home and School
Association:
\$26,000

♥
Pennsylvania EITC/OSTC,
Scholarships and
Financial Aid:
\$162,800

♥
Grants and Special
Government Programs:
\$33,850

St. Mary is fiscally independent of the Archdiocese of Philadelphia.

Implementation of a sustainable K-8 STREAM (Science, Technology, Religion, Engineering, Art, Math) curriculum in order to prepare students to be complex problem-solvers, critical-thinkers, and creative, empathetic and collaborative team members for a 21st-century workforce.

Members of the Class of 2021 were awarded over \$600,000 in scholarships and financial aid

Named the #1 school in the City of Philadelphia by greatphillyschools.org. (All schools are ranked by their academic performance, school safety, and student attendance. St. Mary School attained a 10/10)

ST. MARY AT A GLANCE – 2021-2022

Demographics

Current enrollment 248 Students

Curriculum Kindergarten – 8th Grade: Co-ed

Gender 134 Girls : 114 Boys

Tuition \$5,700
\$7,300 Kindergarten (includes iPad for each K student)

Governance Principal, Pastor Delegate and BLJ

Faculty/Student Ratio 23:1

About Our Students

Catholic Children: 82% of the student body
(Children enter from 32 parishes in Archdiocese of Philadelphia, Dioceses of Camden and Trenton)

Ethnicity: 8% African-American children; 5% Hispanic children
4% Asian children; 73% Caucasian children
1% Native Hawaiian/Pacific Islander;
9% Two or more races

Economics: Title One School

After School Enrichment Programs: 50% of the student body
(participate in our afterschool programs)

Financial Aid: St. Mary students who qualify for tuition assistance will receive **over \$200,000 in EITC/OSTC funding** through BLOCS, Foundation of Catholic Education, and the Children's Scholarship Fund Philadelphia organizations; St. Mary Interparochial Tuition Assistance and Scholarship Program also awards students in need.

Achievements: Class of 2021 received tuition assistance or scholarships to high school, totaling over \$600,000, including one Ignatian Scholarship to St. Joseph's Preparatory School, two St. John Vianney Awards, and one Josephine Connelly Award.

First Archdiocesan School to routinely use 3D printers in the classroom.

Competitive athletic teams are organized in cross country (Grades K-8), volleyball and basketball (Grades 5-6)

iPads and Chromebooks are utilized by students in K-8 to support our blended learning initiative.

Students receive Spanish, Art, Music, and Physical Education instruction in all grades

Robust afterschool enrichment opportunities - STEAM, Junior Explorers, Debate, Theater, Future Cities, Girls and Boys on the Run, Industrial Design, Chess Club, Reading Olympics

Google G Suite for Education School - using Google Classroom in all grades

A 2016 National Blue Ribbon School of Excellence

Over 75% of our graduates qualify for honors classes as high school freshman

To stay at the forefront of educational practices, faculty and staff members attend regional, national, and international professional development programs.

ANNUAL REPORT OF GIFTS

Thank you to all the individuals and organizations who have generously invested in our students so that they may continue to receive an exceptional academic foundation and solid spiritual formation in the heart of historic Philadelphia.

Each year we strive to list each gift accurately, however, if there is a different way you would like to be acknowledged, please email Betty Montgomery at emontgomery@saintmarys.us. Please provide the way in which you would like to be acknowledged.

Annual Giving Campaign

Guadalupe Benefactors Circle

(Gifts of \$5,000 to \$9,999)

Anonymous Donor
Anonymous Donor
Ann B. Zekauskas Family Foundation

Dr. and Mrs. Richard Rothwell
Silivstrini-Santos Family
Richard and Erin Scott
Sokolowski Family
Ruth Spengler
Mark and Josie Tustin
Walker Family

1782 Circle

(Gifts of \$1,000 to \$4,999)

Bhullar Family
John Bloor
Hughes Family
Charlie and Suzy Davis
William and Sandra Geddes
John Horan
Ralph and Barbara Novotney Jr., Esq.
Mike and Renee Regan
Victoria Rodgers
Lorraine Rodgers

Father John Harding, SJ Circle

(Gifts of \$700 to \$999)

United Way

Rev. Robert Molyneux, SJ Circle

(Gifts of \$500 to \$699)

Aguilar Family
Amazon Smile
Theresa Burke
Stephen and Sarah Connelly
Michael and Alexandra Detweiler
Esmonde-Rossi Family
Chris and Kay Gauder
Christina Haciski
Hilser Family
Colin Keiffer
Ken Kelly
Rev. John Large
Theresa Maida
Jeanne Meredith
Peter Ngai
Jerry Parsons
Udai and Kristin Puramsetti
Ted Robb
Carine Sampere
Anne Whelan

Sisters of Notre Dame Circle

(Gifts of \$250 to \$499)

Colussi Family
Donohue Family
Norbert Doran
Peter Gentile
Alex Hoehn
and Joseph Jacovini
McCoy Family
Anthony and Kathleen Naccarato
O'Hara Family
William Shen '87
William and Kathleen Tobia
Trotta Family
Vitullo Family

Magnolia Garden Circle

(Gifts of \$150-\$249)

Sheila Brown
Richard and Kathleen Conway
Anthony DeLuca
Richard and Susan Duffy
Aleena Ea
Eileen Etchells
Gentile Family
Roseann Kirlin
Thomas and Catherine McCoy
Lois McKenna

Rose Garden Circle

(Gifts of \$100-\$149)

Arquitola Family
Bridy Family
Dolores Briskin
Ciambiano Family
Cipparone Family
Frank and Kathleen Cipparone
Matthew Daily '06
Harry Diamond
Steven and Carol Ekdahl
Jim and Terry Jamison
Richard and Kathy Kahl
Klein Family
Philip Motley
Joseph Nines
Alessandro Oliveto '88
Louis Panza
Antonio and Teresa Pimpinella
Policarpo Family
Ronald and Mary Raab
Joseph and Maryellen Raday
Kenneth Grono and Bronwyn Reice
Marie Rice
Sarah Sheridan
Margherita Whitman
Eric and Mari Woodton
Maudeen Woodton

Friends of St. Mary Circle

(Gifts of \$50 to \$99)

Adamian Family
Paquito Ramon and Angelita Azuelo
Balchunas Family
Joseph and Louise Barmann
Gerald and Barbara Bennett
Kathleen Brino
Scott Caswell
Martin and Loretta Corcoran
Gina Daley
Michael DeLone
Epiphany De Luca
Maximilian DePaul
Elizabeth Fahncke
Maria Figueroa
Fisher Family
James and Judith Gallagher
Henry Family
Hummel Family
Hutchinson Family
Christine Johnson
Vincent and Carol Kaulinis
George and Francine Koenig
Malunis Family
Jean Marshall
Meghan McCluskey
Nicolari Family
Veronica O'Connor
Parkinson Family
Pimpinella Family
Plymouth Family
Mary Jayne Pugh
Scarabello Family
Scherneck Family
Sommer Family
Julie Stoiber
Stacey Jacovini Storm
Ann Taylor
Fernando Vila Jr.



Annual Fund

Andrews Family
Lisa Askins
Tim Becker
Amy Blizard
Cecilia Cammisa '06
Campbell Family
John Chernesky
Coval Family
Jessica Dempsey
Isabella DiCampli '16
Stephanie Ferguson
Sofia Fisher '20
Joseph Greene
Joseph Holahan '18
Le Family
Leshner Family
Ernest and Donna Long
Sean McDermott
Alexandra McFadden
Betty Montgomery '08 and Matthew Kropp
Daniel and Jennifer Muller
Bruce Pfitzing and Jennifer Sauder
Alberta Proietta
James Spengler
Domenic and Lucia Spina
Gary and Anita Stovall
Alyssa Taylor
Jean Tierney and Russell Figueira
Jamie Wolf

19th Annual Walkathon

Presenting Sponsor (\$1,000 Level)

Center City Orthodontics
City Plumbing
Koger Family
Ralph and Barbara Novotney
Stogie Joe's

Cultural Champion (\$500 Level)

Albergo Family
Augustine Family
Barnosky Family
Bhullar Family
Ermilio Family
Golarz Family
Harman Deutsch Ohler Architecture
Hilser Family
Milano Family
Montgomery Family
Novotney-Palmer-Campbell Family
Louis P. Tignano Elevator Inspections
Triple Play Sports
Trotta Family

Arts and Hearts Sponsor (\$250 Level)

Atkinson Family
Basile Family
Bernier Klaw Watson
Bradford Family
Buckminster Green
John Burfete
Athena Cardin
Carobus Family
Carvalho Connolly Family
Connolly Family

Stephen P. and Sarah H. Connelly
 Julia Connolly
 Kristin Daly
 DeCesare Family
 Paul Donohue
 Kevin Dowd
 Flood Family
 Joanne Fry
 Gallelli Family
 Landis Gallman
 Gentile Family
 Gorman Family
 Gromelski Family
 Jamison Family
 Luciano Family
 Tom McCloskey Painting and Restoration
 Morano Family
 O'Hara Family
 Tricia Pompilio Photography
 Primp & Play
 Michael and Irene Regan
 St. Mary Home & School Association
 Sunshine Jewelry
 Tierney Family
 Mark and Josie Tustin
 Univest

Music to my Ears Sponsors (\$150 level)

Malchor and Ruby Aguilar
 Aguilar Family
 Angelina Family
 George and Elizabeth Aubrey
 Jean-Pierre Bacle and Michele LeMay
 Balchunas Family
 Bene Vitamins
 Karen Blaydes
 Gina Bonaccorso
 Patricia Boyd
 Courtney Brown
 Christina Byrne
 Campo's
 Kenneth Carobus and M. Faith Angell
 John Chernesky
 Ciurlino Family
 Richard and Kathy Conway
 Costa Frank Family
 Matthew Cuddy
 Diane and Anthony DeLuca
 Roseann Dispigno
 Robert and Margaret Dobie
 Donohue Family
 Eckstein Family
 John and Denise Ermilio
 Finch Family
 Gallagher Family
 William Geddes
 Donna Geddes
 Gunning Family
 Christina Haciski
 Michael and Mary Harkins
 Henry Family
 Hinge Cafe
 Alex and Ellen Hoen
 Holahan Family
 Julian Family
 Juliano Family
 Koen Family
 Keith and Nicole Koger
 Kryszczak Family
 Leshner Family

Lucibello Family
 Lukash Family
 Thomas and Catherine McCoy
 Andrew McDermott
 Seamus McPhillips
 Muller Family
 Peter Ngai
 OW3 Architects
 Parkinson Family
 Pilla Family
 Polito Family
 Raday Family
 Philomena Rego
 Root Family
 Scherneck Family
 Scott Family
 Shapson Family
 Sokolowski Family
 Spengler Family
 Swerling Family
 V. Tiu
 Vezza Family
 Viola Family
 Vitullo Family
 Tanya Weston
 Woodton Family
 Zagacki Family
 John Zagone
 Zemaitatis Family

Granate and Blanco Sponsor (\$75 Level)

Allegretto Plumbing
 Alexis and Vince Allegretto
 Margaret Anderson
 Andrews Family
 Arbitman Family
 Arbitman Family
 Azuelo Family
 Elizabeth and Howard Bateman
 Baute Family
 Bennett Family
 Glenn and Sharon Bradbury
 Dolores and Fred Briskin
 Mary Burfete
 Alex, Pati, Will, and Max Carobus
 David Carpenter and Maria Polito-Carpenter
 Eugene and Joam Choi
 Clymer-Blizard Family
 John Colussi
 Dennis Connolly
 Rick and Tracey Conway
 Dermis E. DeJesus
 Joseph F. DeLullo, IV
 Maximilian DePaul
 Maximilian and Kim DePaul
 Darla and Peter DeRito
 Linda Deshauteurs
 Michael and Alexandra Detweiler
 Roseanne Devine
 DStanley Catering
 Echevarria Family
 Ferro Family
 Joyce Fineberg
 Wayne and Dawn Frank
 Catherine Gallagher
 Grandizio Family
 Hendri Family
 Elena Hoehn
 Holli Horak and James Knepler
 William and Maria Dolores Hummel
 Hummel Family



Anna Mae M. Ismael
 Don and Linda Jack
 Vincent and Carol Kaulinis
 Howard and Helen Kay
 Donald and Karen Koger
 Nadica Kracun
 Le Family
 Liberty Landscape
 Gerald and Linda Loke
 Loke Family
 Kim Loonstyn
 Xinliang Ma, MD, PhD
 Jean Marshall
 Thomas and Kathryn Marshall
 McGinley Family
 Elaine McPhillips
 Linda and Joseph Mestichelli
 Kathleen and Anthony Naccarato
 Nicolari Family
 Veronica O'Connor
 Oliveto Family
 Sara and Domenick Paparone
 Paul and Dolores Policarpo
 Mary Jayne and Douglas Pugh
 Mary and Robert Raab
 Rizzio Family
 Dr. and Mrs. Richard A. Rothwell
 Dr. and Mrs. William E. Rough
 Josephine Scavola
 Scheving Family
 Nicholas and Kathleen Squilla
 Squilla Family
 Ann Taylor
 Carl Tiu
 William and Kathleen Tobia
 Joseph Tralie: Allstate Insurance
 Anne Whelan
 Maudeen Woodton
 Zhao Family

Supporters

Jamila Aberdeen
 Lynne Adams
 Victoria Aikens
 Tasha Aikens
 Lisa and Jeremy Albergo
 Monique Amoroso
 Karen Anderson
 Theresa Angelina
 Heather Arbushites
 Sarah and Kris Armonson
 Charles Arrison
 Delilah Arroyo
 Mary D. Asare
 Andrew and Rosalind Au Yong
 Toinette Augustine
 Matthew and Christopher Azuelo
 Alexandria Baccari
 Kenneth Balchunas
 Patricia Balchunas
 Mary Ellen Barrett
 Brent Bateman
 Debra Bateman
 Liliya Baturina

Pat Bigley
 Brie Birch
 Grace Bonacci
 Giuliana Bonaccorso
 Robert and Stephanie Bongiovanni
 Paul Bradford
 Kenneth Brennan
 Kathleen and Thomas Brino
 Kathleen Brown
 Sheila Brown
 Daniel Brownsey
 Machel and Craig Bucher
 Donna and Thomas Buck
 David Calabrese
 Phil Caldwell
 Calvaresi Family
 Jim and Marie Carfagno
 Jessica Carfagno
 Dan Carobus and Faith Angell
 Becky and Paul Caswell
 Charles Caswell
 Scott Caswell
 Patty Caulden
 Frank and Kathleen Cipparone
 Fernanda Cucci
 Rhonda Conner
 Jane Connolly
 Susan Connors
 Glenn Conway
 Shawn Conway
 Starlene Cooner
 Coval Family
 Eric and Katie Daleo
 Brian Davidson
 Ellen Davidson
 Roseann Defalco
 DeFino and Campagna Fine Jewelry
 Dermis E DeJesus
 Linda Delvy
 Michael, Tracy, and Elise DeRosa
 Jack and Alice Devine
 DFS GROUP LLC
 Angela DiGerolamo
 Michael DiPietro
 Janice DiVario
 Tracey Donohue
 Sharon Donohue
 Robert and Donna Dougherty
 Michael Dougherty
 Kathleen and Don Drake
 Stacia Duff
 Susan Eckstein
 Daniel and Catherine Eife
 Marybeth Eife
 Daniel and Denise Eife
 Sherette Erwin
 Kathryn Farinella
 Robert Ferro
 James Festa
 Justin and Marissa Fiordimondo
 Justin and Marissa Fiordimondo
 William Fisher
 Fisher Family
 Anthony Fleming and Scott Cauvel



continued next page >

Annual Report of Gifts continued >

Fleshman
 Roberta Kubiak
 Eleanor Flood
 Nancy and Michael Flynn
 Fung Family
 Daniel Gabriel
 Judith and James Gallagher
 Lori and Franco Gallelli
 Pasquale Gallelli
 Ronald and Deborah Garagozzo
 Jennifer Gaspar
 Peter Paul Gentile
 Rosemary and David Gifford
 Jocelyn Golarz
 Connie Goldberg
 Larry Goldberg
 Joyce Golden
 Katelin Gorman
 Thomas Gorman
 Kevin Gorman and Martha Manning
 Madeine Goss
 Maureen and Dan Goss
 Donald Goss
 Maureen and Don Goss
 Dary C. Gov
 Tim Graham and Craig Thomas
 William and Helen Grahslar
 Lillian Grasso
 Sandra and Gerald Gromelski
 Grono
 Walter and Cheryl Grono
 Jennifer and Brian Gross
 Marie and George Gunning
 Debra Hanson
 Claire Hanson
 Madeleine Harkins
 Marian Harkins
 Keri Lyn Heickert
 Oscar and Denise Henderson
 Chris and Colleen Henry
 Kelly and Martin Heston
 Stephanie Hodge
 Hogan Family
 Peter Holtan
 Priscilla Hopkins
 Howlett Family
 Patricia Huber
 Maureen Hulsey
 Alicia Hummel
 Kim Huynh
 Maria Jamison
 Tamara Jamison
 Janczewski Family
 Jeffery Family
 Richard and Judy Julian
 Antoinette and James Juliano
 Allison Keevil
 Georgia Kelly
 Mary Claire Kelly
 Anne Kennell
 Erin Kilrain
 William and Marianne Kilrain
 Mary Kate Klarich
 John and Margaret Klein
 Jennie Knies
 Kevin and Suzanne Koger
 Joseph Krakauskas
 Ralk Lanciano
 Patricia and Barry Leader
 Carol and Frank Leberte
 Elizabeth Leshner

Kristian and Sherri Leuzzi
 Rochelle Litman
 Scott and Cynthia Lizardi
 Bethany Lizardi
 Kristen Lohmann
 Loughran Family
 Robert Lucas
 Maria Luciano
 Veronica Magdadaog
 Joseph and Mary Majauskas
 Dominique Mangini
 James and Janice Marcks
 Silvia Marconi
 Michelle Marcuse
 Natalie Martino
 Joseph and Dennise Mascuch
 Meghan McCluskey
 Brendan McGinley
 Aileen and Shamus McNulty
 Paul McPhillips
 Paul Mensah
 Josephine Mensafh
 Talia and Sal Messina
 Nicole and Marco Messina
 Susan and Suvara Mingmongkol
 James and Margarita Mitsdarffer
 Mary L Mitsdarffer
 Irene Montalvo
 Nick and Pat Montgomery
 George Moore
 Nicholas and Barbara Morici
 Karen Morrow
 Erin Mullaney and Henrick Ringborn
 Daniel Muller
 Brianna Nicholas
 Shawn and Colin Nilan
 Nicole Nilan
 Kathleen O'Connell
 Siobhan O'Keefe
 Igor Oliveira
 Alessandro and Michele Oliveto
 Michele Oliveto
 Elizabeth Olivieri
 Ronald and Nancy Palumbo
 Louis Panza
 George Patsalosavvis and Anna Tobia
 Kenneth and Audrey Pavlack
 Lori Pavlack
 Theresa and Bob Pennestri
 Angelique Piccirilli
 Michael and Lucia Pilla
 Erin L Pimpinella
 Teresa and Antonia Pimpinella
 Rose Ann Pimpinella
 Judithann Plymouth
 William and Genevieve Poisseroux
 Natalie Pompilio
 Lauren Poulter
 Michael Prete
 Kathleen Prete
 Dominic Pugliese
 Rachubinski Family
 Jeanne Rance
 Maureen and James Reed
 Jennifer Rego
 Donald and Bronwyn Reice
 Kerry Remley
 Sharita Revell
 Vincent and Lisa Ricchiuti
 Marie Rice
 Michael and Susan Ritsko



Ritsko Family
 Angelina Rizzio
 Anthony Roe
 Theresa Rogers
 Alan and Patricia Ross
 Sandra Rossi
 Rachel Rothstein
 Greg Rothwell
 Marcelo Rouco
 Gladys Santiago
 Maria Santos
 Michael Sarver
 Jennifer Sauder and Bruce Pfetzing
 Anne Schaeffer
 Marge Scherneck
 Peter and Colleen Schiefelbein
 Lynnnann Schrader
 Mr. and Mrs. Walter Scott
 Michele Shaffer
 Jay and Catherine Shapson
 Kurt Shenk
 James and Nancy Shenk
 Christopher Shenk
 Joann Sherman
 Caleb Shimberg
 John Silvestrini
 Mary Ann Silvestrini
 Emma Smith
 Nancy and Donald Sommer
 Ruth and Paul Spengler
 Domenic and Lucia Spina
 Sharon Stehle
 Kellie and Gregory Steller
 Kathleen Sullivan
 Robert Suter
 Frances Swerling
 Jelica Teitler
 Moira Tierney
 Jean Tierney and Russel Figueira
 Maureen Tirone
 Emily Tobia
 Vincent R. Trotta
 Tucker Family
 Viola Family
 Rita Viola
 Santino Viola
 Lucia and Greg Viola
 Anthony and Marlene Vitullo
 Maria Walker
 Scott and Linda Wallace
 Yajing Wang
 Richard and Jacqueline Weir
 Raymond W. Werthman
 Bruce Williams
 Christine Williams
 Patricia Williams
 Traci Winfrey
 Joan Wittnebert Hobson
 Paul Wong / Cheryl Co
 John Yorkanis
 Lorie Zagacki
 Stanley and Joyce Zagacki
 Thomas Zemaitatis
 Ksenia Zukowsky

Businesses

Adventure Aquarium
 Alejandro Bedoya and the Philadelphia Union
 Barnes Foundation
 Dutch Wonderland
 Franklin Institute
 John's Water Ice
 Longwood Gardens
 Lucky's Last Chance
 National Constitution Center
 Philadelphia Flyers
 Philly Art Center
 Stateside Vodka
 Stogie Joe's Tavern
 Sunshine Jewelry
 Suraya Restaurant
 Takorean
 The Ritz-Carlton, Philadelphia
 Tricia P. Photography
 Urban Village Brewing Company
 Walnut Street Theatre
 Xoichtl
 Yards Brewing Company

14th Annual Harvest Hoedown 2020

Presenting Sponsors (\$1,000+ Level)

Aguilar Family
 Michael Anastasio Produce Inc.
 City Plumbing
 Esposito's Meats (A. Esposito Inc.)
 Harman Deutsch Ohler Architecture
 Fernando Family
 Ralph and Barbara Novotney

Harvest Gold Sponsor (\$500 Level)

Anonymous Donor
 Scott and Shawna Aschmies
 Augustine Family
 Barnosky Family
 Bloor Family
 Buckminster Green
 Campo's Philly Cheesesteaks
 Carobus Family
 Conway Team
 Gentile Family
 Golarz Family
 Gromelski Family
 Henry Family
 Hilsen Family
 Koen Family
 Nicolari Family
 Palapura Family
 Pucca Fera Project Management Services
 Scheving Family
 Sokolowski family
 St. Mary Home & School Association
 Mark and Josie Tustin

Hunter's Moon Sponsors (\$250 Level)

Allegretto Family
 Andrews Family
 Bradford Family
 Julia Connolly and Michael Garvey



Brian Daly
 Harry Diamond
 Holahan Family
 Hummel Family
 Julian Family
 Koger Family
 Daniel and Quyen Le
 Leshner Family
 McGinley Family
 Matthew and Catherine Milano
 Montgomery Family
 Motley Family
 MSC Investment Sales Team
 James and Eleanor Muller
 Primp & Play / Murphy Family
 Quality Appraisal Valuations, Rocco
 Luciano, CREA
 Rendell Associates, LLC.
 Sunshine Jewelry
 Tricia Pompilio Photography
 Scott Family
 Spengler Family
 Stogie Joe's Tavern
 Woodton Family

Family Listing (\$100 Level)

Culinary Flex
 Cipparone Family
 Connelly Family
 Conner Family
 Cronin Family
 DePaul Family
 Fahncke Family
 Griffin Family
 Christina Haciski
 Jamison Family
 Killen Family
 William Kilrain and Elaine McPhillips
 Lopez Family
 Dan, Liz, Cormac and Maggie McCall
 McCoy Family
 McCloskey Family
 McKenna Family
 Messina Family
 McDuff Family
 Jeanne Meredith
 Morrow Ritsko Family
 Ronnie O'Connor
 Pimpinella Family
 Polito Family
 Plymouth Family
 Rachubinski & Rogers Funeral Homes
 Raday Family
 Sarver-Williams Family
 Tom McCloskey Painting and Restoration
 Vitullo Family
 Vu Family
 Zagacki Family
 Zemahtatis Family
 Zhao Family

Supporters

All St. Mary Interparochial School Faculty
 and Staff
 Alusiv
 Angelina Family
 Arroyo Family
 Azuelo Family
 Bryson Family
 Dempsey Family
 Gorman Family
 Muller Family
 Oliveto Family
 Paparone Family
 Shapson Family
 Jean Tierney and Russ Figueira
 Zdanavage Family

In Honor of

Jack and Julia Klein by William Geddes
Louis V. Panza and Gia C. Panza by Diane
 Panza-DeLuca

In Memoriam

Joseph Kelly by Ken Kelly
Evyi Scheving for the St. Mary Library by
 Anne Whelan
Margie Dunn by Kathleen Brino
Msgr. John W. Lolio by Udai and Kristin
 Puramsetti

Marie Koenig Wadsworth Scholarship

Jeanne Meredith
 Kenneth Wadsworth

Margaret Dunn Scholarship

Isabella Brilliant '08
 Cecilia Cammisa '06
 Lucia Cipparone
 Christina A. Haciski
 Susan Lacovara Levesque '90
 Jeanne Meredith

Library

Anne Whelan

Suzy Davis Scholarship Fund

Cipparone Family
 Carter Leidy, Jr.
 Jeanne Meredith
 Ralph and Barbara Novotney Jr., Esq.
 Scheving Family

Smith Family Recovery Fund

Albergo Family
 Arbitman Family
 Paul Atkinson and Amy Scott
 Barnosky Family
 Bonaccorso Family
 Bridy Family
 Briskin Family
 Ty and Anne Calvaresi
 Cammisa Family
 Campo Family
 Cipparone Family
 Donahue Family
 Aleena Ea
 Gavin-Ferro Family
 Golarz Family
 Gorman Family
 Gunning Family
 Christina Haciski
 Holahan Family
 Donna Klein
 Matthew and Susan Koger
 Kumar-Smith Family
 Rev. John Large
 Le Family
 Lopez Family
 Luciano Family
 Dominic and Rita Mangino
 McDermott Family
 McKenna Family
 Matthew Morano and Emily Perschetz
 William Mullen
 Daniel and Jennifer Muller
 Benjamin and Charlotte Olshin
 Palapura Family
 Ronald and Nicole Palumbo
 Paparone Family
 Plymouth Family
 Udai and Kristin Puramsetti
 Joseph and Maryellen Raday
 Tina Rago and Mr. Harry Kane Jr.
 Kenneth Grono and Bronwyn Reice
 Ritsko Family
 Ritsko Family
 Sarver Williams Family
 Sauder Family
 Shapson Family
 Michelle Shiffrin
 Jill Sommer
 James Spengler
 Bryan Sullivan
 Tierney Family
 Trotta Family
 Vosacek Family
 Walker Family
 Zdanavage Family
 Zhao Family



Pennsylvania's Education Improvement (EITC) and Opportunity Scholarship (OSTC) Tax Credit Programs and Scholarship Funds

Braskem USA
 Mark J. Bojanowski Fund
 Business Leaders Organized for Catholic
 Schools (BLOCS)
 Children's Scholarship Fund
 Connelly Family
 DNB First
 John Ermilio
 Daniel Fitzpatrick
 Greenwich Terminal, LLC
 Heritage Foundation Grant Vision of Hope
 Capital Campaign
 Honorable Judge Savage

Educational Partners

Box Tops for Education
 Community Design Collaborative
 Connelly Foundation
 Cora Services
 Dancing Classrooms
 Free Library of Philadelphia
 Global Philadelphia
 Greener Partners
 National Park Service
 Office of Catholic Education
 Office of Nonpublic Programs
 St. Mary Home and School Association
 SEPTA
 Thomas Jefferson University

Corporate Matching Gifts

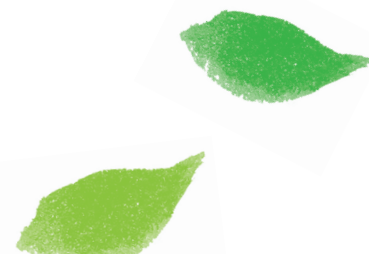
Bank of America
 CHUBB Charitable Foundation
 Comcast Corporation
 GlaxoSmithKline Give Program
 Novartis
 Radian Guaranty Inc.
 United Way
 Wells Fargo

Services-in-Kind

Design: Alusiv Design - Owner, Mr. Richard
 Cress and Polly McKenna Cress
 Triple Play
 Anastasio's Produce
 Campo's Cheesesteaks
 Cousins Mike
 Las Cazuelas
 Steak 'Em Up
 Greener Partners

Grants

Ambassador's Fund for Catholic Education
 Connelly Foundation
 Foundation for Catholic Education
 Universal Service Program for Schools and
 Libraries and Universal Service Fund



HELP US KICK OFF OUR ANNUAL GIVING CAMPAIGN

Supporting the St. Mary Difference



OUR MISSION

St. Mary Interparochial School challenges its diverse student body to grow morally, academically and socially, into passionate, confident and Christ-centered leaders of the 21st century.

The Annual Giving Campaign is a yearly fundraising drive for the purpose of raising much-needed funds to benefit the students of St. Mary Interparochial School.

These essential funds assist in providing:

- A top rated Academic Program
- Scholarship and Tuition Assistance for families in need
- Superior Art, Music and Cultural Enrichment Program
- Technology for the 21st Century
- Necessary building and physical plant maintenance

We are grateful for your generosity and we hope you will contribute once again along with our entire St. Mary School community. Your contribution will be used to benefit the students of St. Mary Interparochial School. Thank you in advance for your donation!

HOW CAN YOU HELP?

- Donate online at www.saintmarys.us, use the enclosed envelope or call 215-923-7522.
- Check with your Human Resources Department or Matching Gift Coordinator to see if your company will match your annual giving donation.
- Spread the word about our Annual Giving Appeal to others who, like you, believe in an excellent Catholic education for children of all religious, economic, and ethnic backgrounds.



This newsletter was designed and printed with the support of Alusiv communication design and Conner Printing, Inc

Saint Mary Interparochial School is an equal opportunity service provider and employer

Open Houses 2020
Wednesday, May 11, 2022

8:30 am to 9:30 am

History of Saint Mary Interparochial School

The rich academic and historic heritage of St. Mary Interparochial School dates to the early days of Philadelphia, as Catholics and Protestants engaged in a spirited debate over educational practices. Founded in 1782 by the Jesuit fathers of Old St. Joseph's Church, St. Mary is known as "The Mother School" of Catholic educational patterns in this country. Situated near Independence Hall and other pivotal sites in old Philadelphia, it served children for more than a century before closing in 1902 after a devastating fire. St. Mary's reopened in 1968, again with a distinction: With students drawn from six different parishes, it was the first interparochial school in the nation. St. Mary Interparochial School is situated in Independence National Park and serves over 250 children from all over the City of Philadelphia and its suburbs.



Saint Mary
Interparochial School
Fifth and Locust Streets
Philadelphia, PA 19106
215-923-7522
www.saintmarys.us

NONPROFIT ORG
US POSTAGE PAID
PHILADELPHIA, PA
PERMIT NO. 1235