



Hurricane Ian Recovery Update November 15, 2022

# Progress & Accomplishments



9/28/2022  
Hurricane Ian Landfall



10/12/2022  
1st Pass of Debris Collection Begins



10/27/2022  
Day 16: 164,591 CY Collected  
Exceeded Hurricane Irma Collection Total



11/07/2022  
Day 27: 350,894 CY Collected  
Exceeded Hurricane Charley Collection Total



11/14/2022  
Day 34: 511,562 CY Collected



12/23/2022  
Projected 80% of Debris by Volume Collected



## DAILY DEBRIS ACTIVITY REPORT

Daily Report For: 11/14/2022

Client: City of Sanibel

Mission: Florida Hurricane Ian DR-4673-FL

Debris Hauler: Crowder Gulf

Report Generated On: 11/15/2022

### ROW Haul In Collection Detail

Monday, November 14, 2022

<u>Debris Hauler &amp; Type</u>	<b>Daily Collection</b>		<b>Project to Date</b>	
	<u>Loads</u>	<u>CYD</u>	<u>Loads</u>	<u>CYD</u>
Vegetation	184	9,885	5,210	255,404
Construction & Demolition (CD)	319	17,902	5,124	256,158
All Collection Totals	503	27,787	10,334	511,562



### Processed Debris Haul Out Detail

Monday, November 14, 2022

<u>Debris Type</u>	<b>Daily Haul Out</b>		<b>Project to Date</b>	
	<u>Loads</u>	<u>CYD</u>	<u>Loads</u>	<u>CYD</u>
Reuse Mulch	-	-	63	6,487
Mulch	-	-	-	-
Compact CD	14	1,608	163	17,283
All Haul Out Totals	14	1,608	226	23,770

**160,668 CY** of debris collected since last Tuesday- nearly the total amount of debris collected following Hurricane Irma



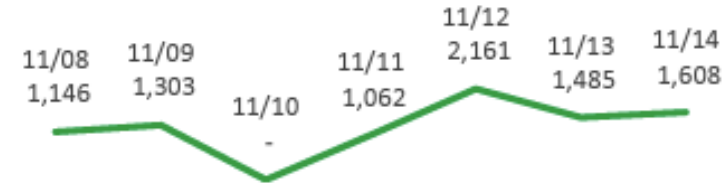
### HAUL IN TREND

Cubic Yards per Day



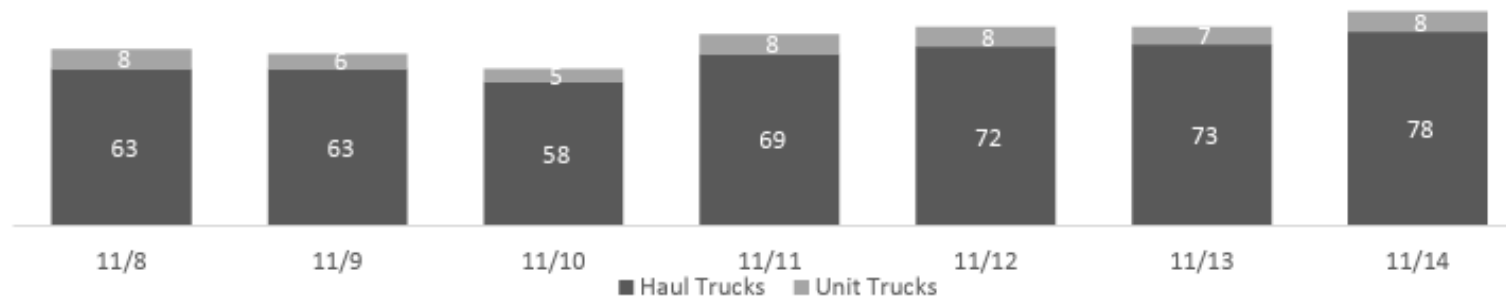
### HAUL OUT TREND

Cubic Yards per Day

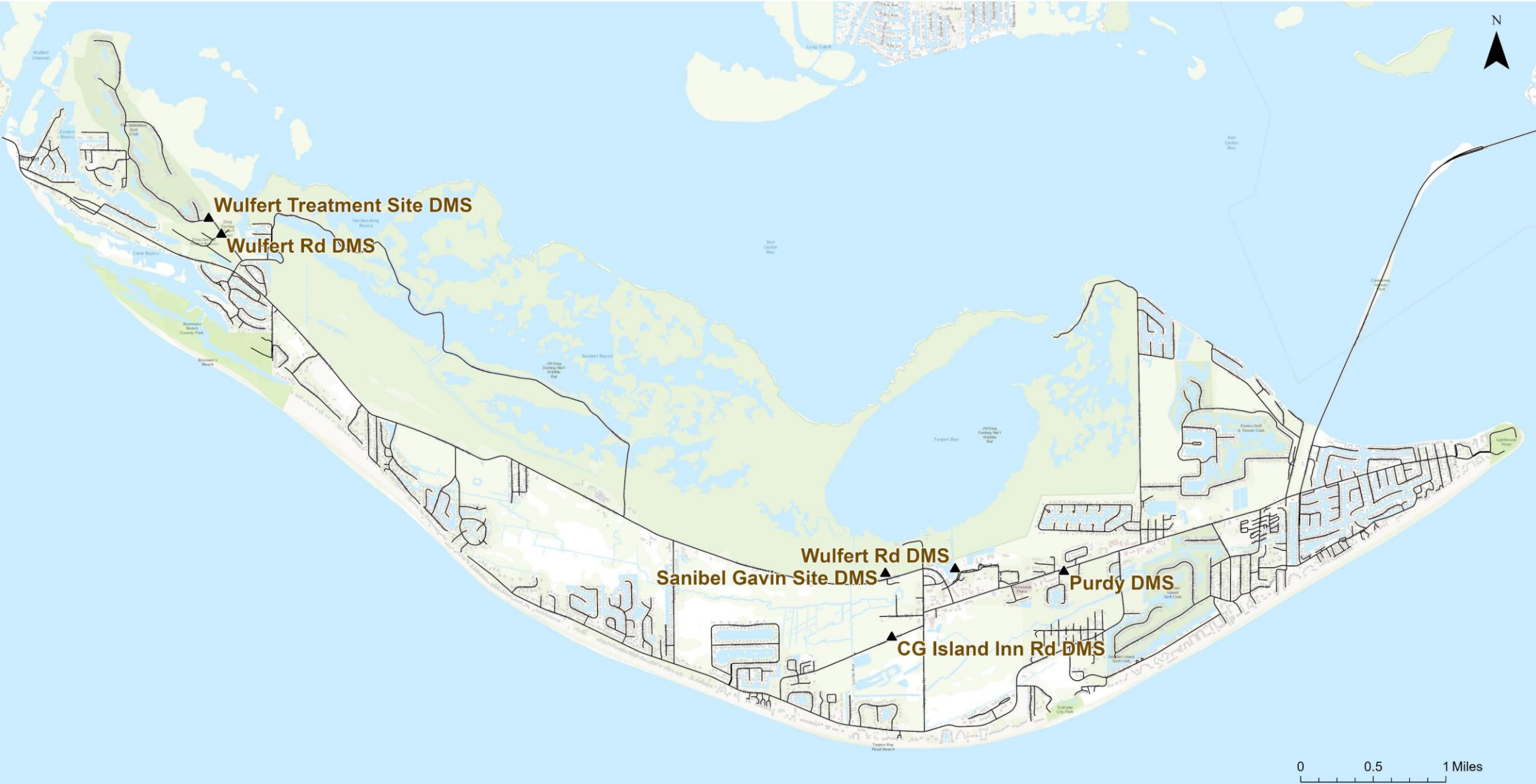


### EQUIPMENT

Truck & Trailer Count per Day



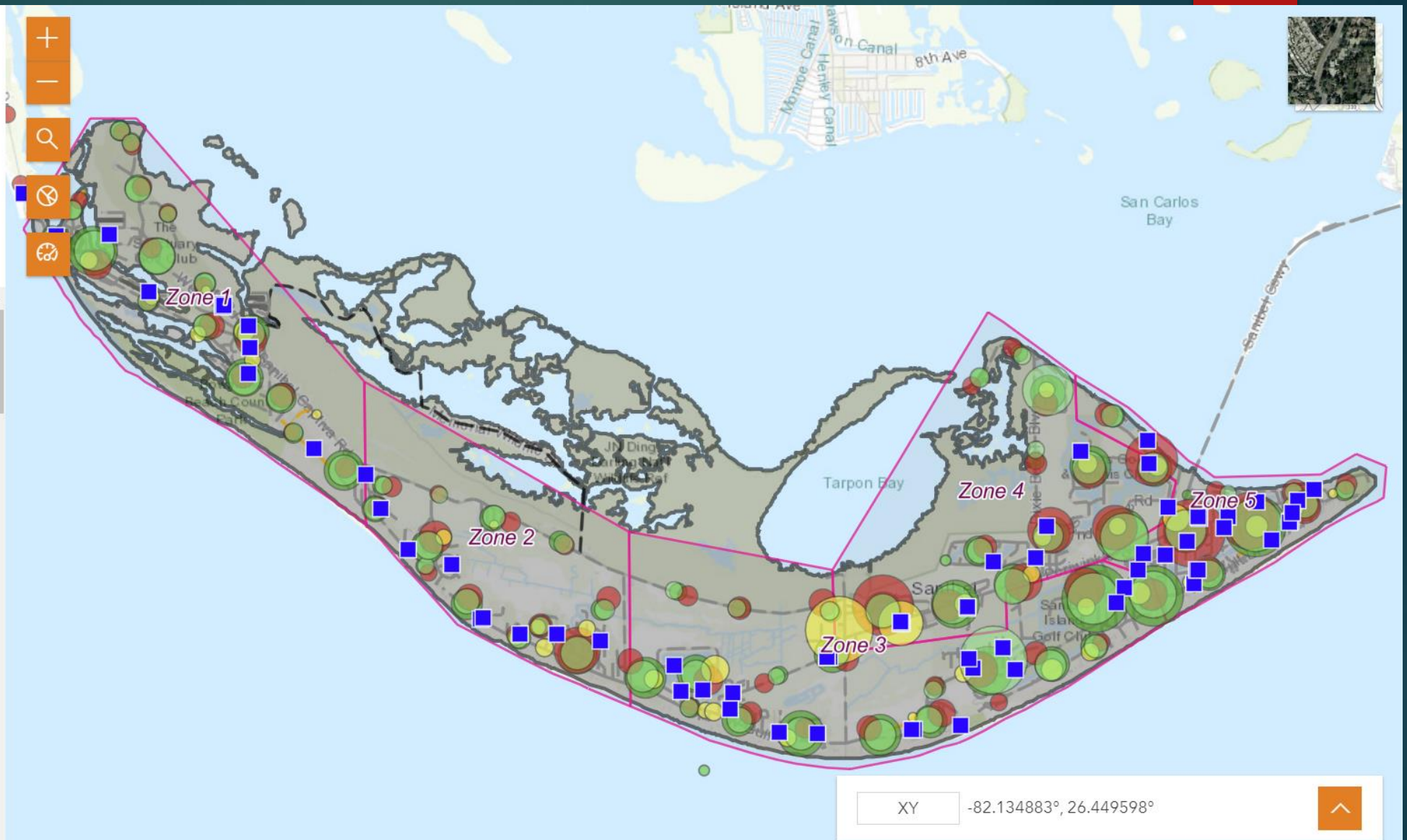
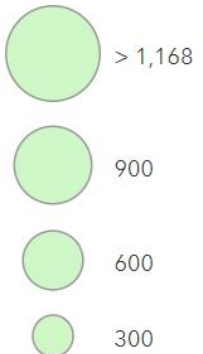
Sanibel, FL - Debris Management Sites

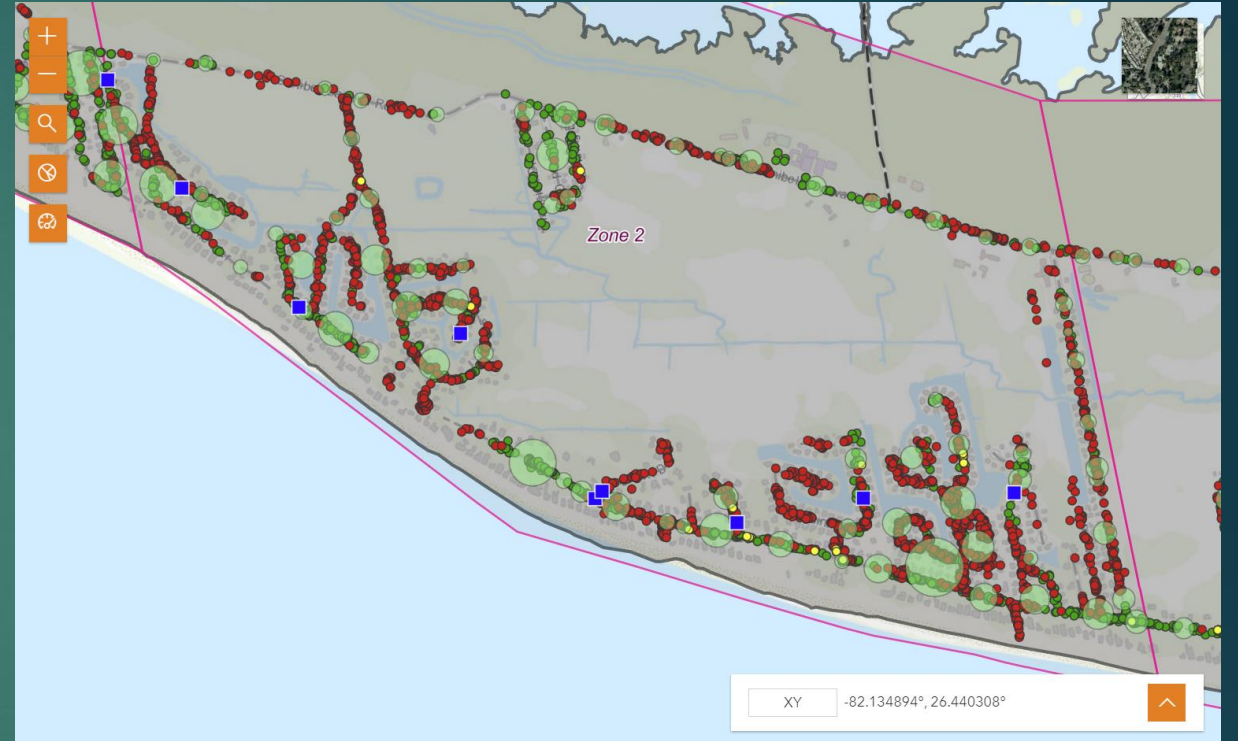
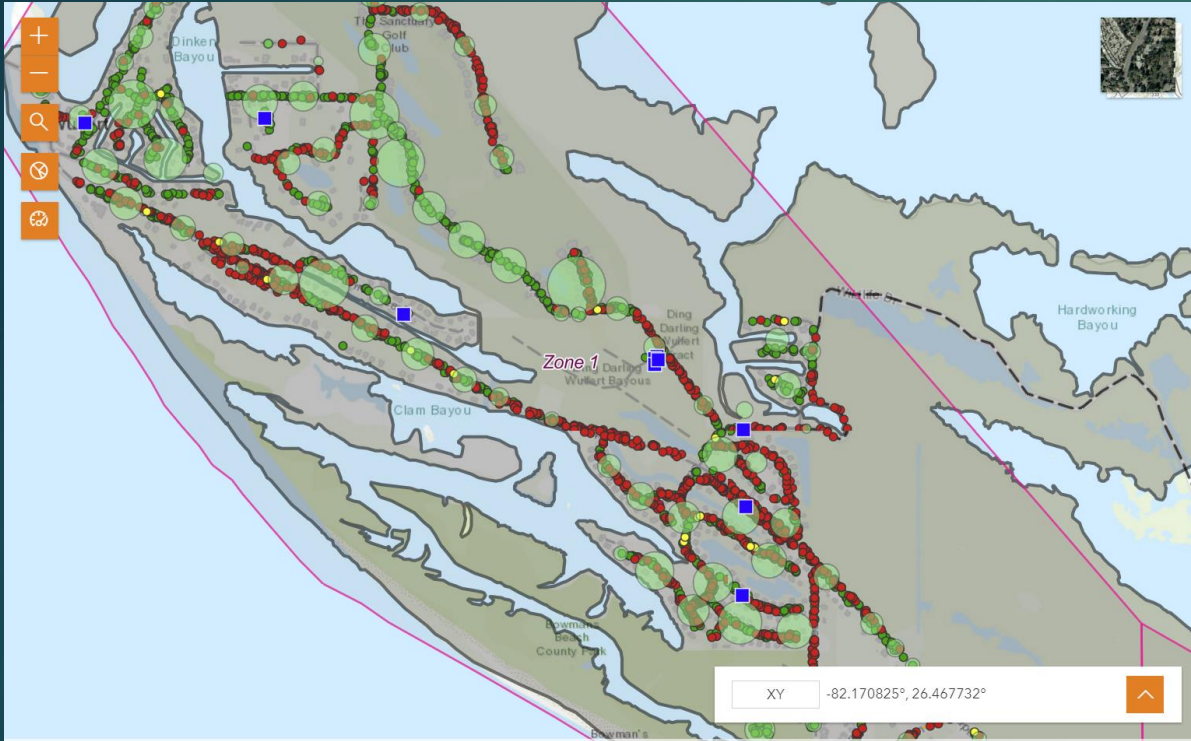


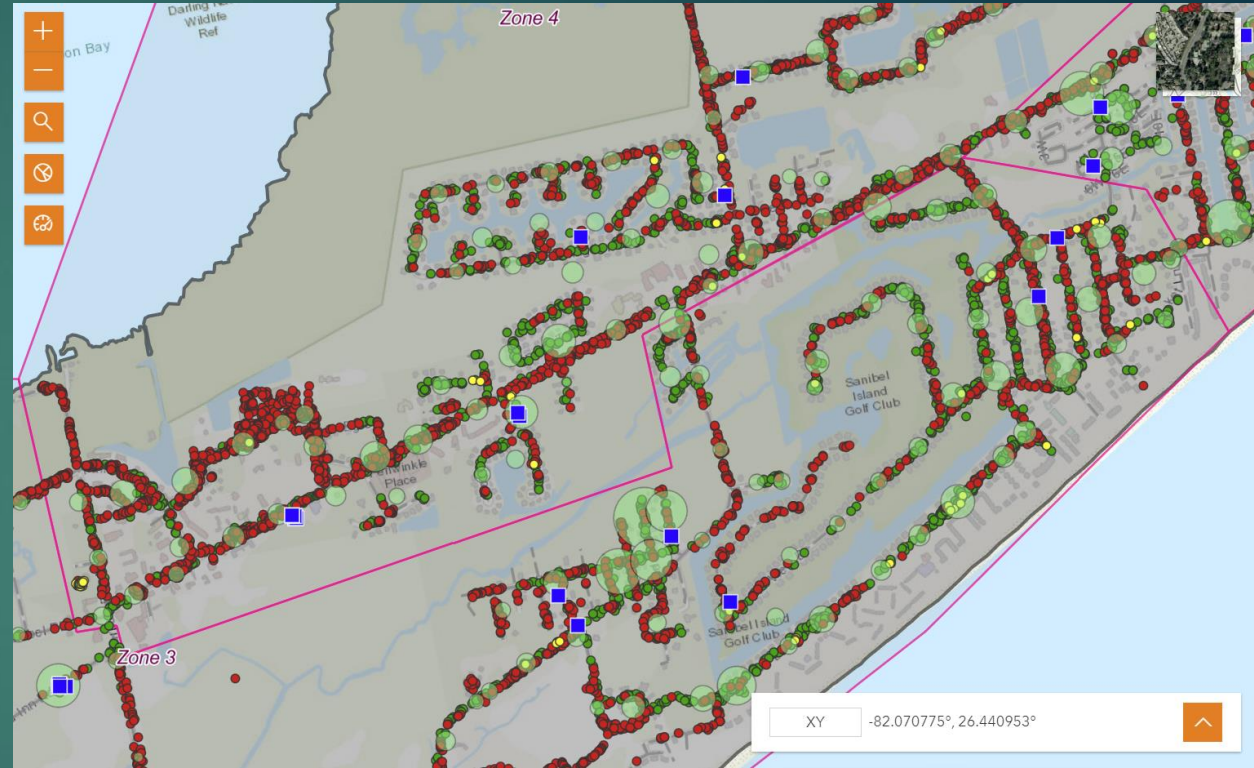
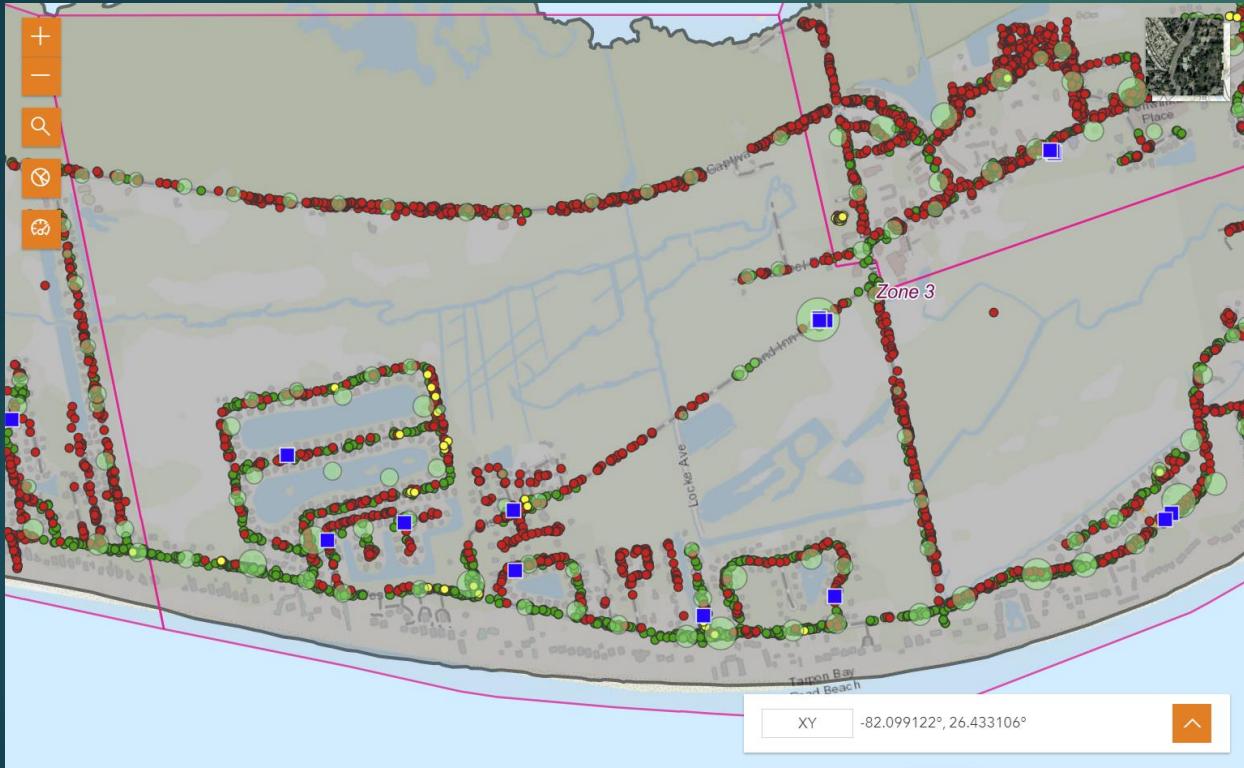
# Sanibel Ian Debris Unit & Load Tickets Map

☒ Monitor Locations☒ Piles

Number of features









# BUILDING DEPARTMENT

# Updated Power Restoration Guidance

Published on: November 13, 2022 03:01am

By:

*Sanibel, FL* – The City of Sanibel has updated the required affidavits that an electrical contractor or an electrical engineer must submit before LCEC may restore power to a structure.

**Electrical Contractors** – A Florida licensed electrical contract may inspect and submit an affidavit for residential structures with a service less than 600 amps (240 volts) and commercial structures with a service less than 800 amps (240 volts).



# Permit Portal Opened on November 7<sup>th</sup>

- 135 Total Permits Submitted to date
- 10 issued
- 14 ready for issuance



# EMERGENCY PERMITTING