

**ELIZABETH DIMON
(Eileen Osbourne)**

PBD: *Picnic, Our Town, Dividing the Estate, Exit the King, All My Sons, Copenhagen, Souvenir, Berlin to Broadway, and The Dresser*. Beth is a four-time Carbonell Award winner and multiple nominee, and is a recipient of the Frank Prize and the Silver Palm Award. Other Florida credits include 20 years with Florida Stage and Caldwell Theatre Company, Asolo Repertory Theatre, Riverside Theatre, Royal Palm Dinner Theatre, Jupiter Dinner Theatre, Theatre Lab, Arts Garage, Actors' Playhouse, GableStage, Gulfshore Playhouse, TheatreZone, American Stage, Key West Theatre Festival, Mosaic Theatre, Theatre West, 10 seasons of Summer Shorts for City Theatre, and more. Beth is a proud member of Actors' Equity Association, a teacher at Lake Worth Playhouse, and a resident artist of The Dramaworkshop.



**LAURA TURNBULL
(Kate Osbourne)**

has appeared at PBD in *Zorba!, A Delicate Balance, The Effect of Gamma Rays on Man-in-the-Moon Marigolds* (with her daughter, Arielle Hoffman), and *Jacques Brel Is Alive and Well and Living in Paris* (with her husband, Avi Hoffman). She has performed at nearly every professional theatre in South Florida including Florida Stage, Caldwell Theatre Company, GableStage, and Actors' Playhouse, and her credits also include Broadway, Off-Broadway, national tours, and regional theatre. Laura is a multiple Carbonell Award nominee and winner, and is proud to be a long-standing member of Actors' Equity Association. But the sources of her greatest pride (and joy) are her daughters, Arielle and Liana.



**COLIN MCPHILLAMY
(Johnnpateenmike O'Dougal)**

PBD: *The History Boys, Our Town, Exit the King, The Pitmen Painters, Copenhagen; Actors' Playhouse: End of the Rainbow; Maltz Jupiter*



Theatre: *Dial M For Murder, The Audience*. Seasons at Florida Stage and The Promethean Theatre. UK: National Theatre, West End, and TV. Broadway/New York: *Waiting in the Wings, House & Garden, The Importance of Being Earnest*. Australia/New Zealand: *Plum, Democracy*. US TV: *Law & Order: Criminal Intent, Pan Am, Zero Hour, The Blacklist: Redemption*. Colin has taught and guest directed in London and Beijing. Writing includes *The Tree House and Other Stories, An Actor Walks into China*, and *Actor Blog Plus*. His TV interview show *Alternatives* is available at mcphillamy.com

**ADAM PETHERBRIDGE
(Billy Claven)**

is very excited to be making his PBD debut. Off-Broadway: *In the Secret Sea* (directed by Martin Charnin), *Da* (Irish Repertory Theatre). Regional: *Fiddler on the Roof, Over the Pub, Baskerville* (Saint Michael's Playhouse); *Boeing Boeing, Lombardi, The Drawer Boy* (Depot Theatre). UK: *All an Act*. Adam is a graduate of the Actors Studio Drama School, and a resident of Brooklyn. Thanks to everyone at PBD, Namaw, Mom, Mali, Ken, Anna, Bret Adams, and all friends and family here and there. adampetherbridge.com



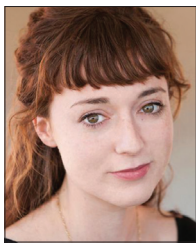
**WESLEY SLADE
(Bartley McCormick)**

GableStage: *Hand to God* (Jason/Tyrone – Carbonell Award nominee) and *It's Only a Play* (Sir Frank Finger); Mad Cow Theatre: *Picasso at the Lapin Agile* (Albert Einstein), *The Who's Tommy* (Tommy), and *Sunday in the Park With George*; The Wick Theatre: *Peter Pan* (Smee), *Man of La Mancha, A Funny Thing Happened on the Way to the Forum*, and *La Cage aux Folles*; TheatreZone: *Into the Woods* (Jack); American Stage in the Park: *Monty Python's Spamalot* (Sir Bedevere and others); Southern Rep: *Spring Awakening*; Garden Theatre: *Dirty Rotten Scoundrels* (Freddy); and more. Wesley regularly performs at Universal Studios, Sleuths Mystery Dinner Theatre, and other venues in Orlando.



**ADELIND HORAN
(Helen McCormick)**

Recent theatre:
Neighborhood 3 directed by Joel Schumacher, *The Old Masters*, *Smoke* (The Flea). *Cry of the Mountain*, her acclaimed original documentary solo show about mountaintop removal in Appalachia, had a three-year tour, a run at the Edinburgh Fringe Festival, and won a United Solo Award for Best Documentary Play in 2012 from the United Solo Theatre Festival at Theatre Row. She will be appearing in a new Netflix series this fall, as well as the feature films *Wanderland* and *Delenda*. She co-writes for and stars in the hit web series *The Pioneers*, featured on Funny or Die and Seeka TV. She trained at the London Academy of Music and Dramatic Art (LAMDA), and received her BA from Hampshire College. adelind.com



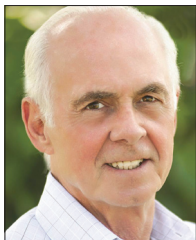
**JIM BALLARD
(Babbybobby Bennett)**

is happy to be back home at PBD, where he is appearing in his tenth production. National and Asian Tour: *The Sound of Music* (Captain von Trapp). Other credits include Maltz Jupiter Theatre: *Doubt* (Father Flynn), *Dial M for Murder* (Max), *Frost/Nixon* (Brennan); Actors' Playhouse: *Urinetown* (Lockstock – Carbonell Award), *Spamalot* (Lancelot), *Million Dollar Quartet* (Sam Phillips); GableStage: *The Adding Machine* (Shrdlu – Carbonell Award), *In the Next Room* (Dr. Givings). Resident artist of The Dramaworkshop. To all who served past and present, Semper Fi.



**DENNIS CREAGHAN
(Doctor McSharry)**

was seen recently at PBD as Nonno in *The Night of the Iguana* and James Tyrone in *Long Day's Journey Into Night*. He has worked extensively in all media across the country and in Europe, appearing with the legendary Elizabeth Taylor in *The Little Foxes*



in London's West End. He was seen on Broadway in the original productions of *The Elephant Man* (with David Bowie) and Neil Simon's *45 Seconds From Broadway*. He has done more bad television than he cares to admit, but the good shows include *Star Trek: The Next Generation*, *L.A. Law*, *NYPD Blue*, and several appearances on *Law & Order*. Dennis is a resident artist of The Dramaworkshop.

**HARRIET OSER
(Mammy O'Dougal)**

is delighted to return to PBD, where she appeared in *Les Liaisons Dangereuses* and *The Effect of Gamma Rays on Man-in-the-Moon Marigolds*. She was recently seen in *This Random World* at Theatre Lab. Harriet has played over 200 roles in her long career; a very short list includes Daisy Werthan in *Driving Miss Daisy* (Silver Palm Award), The Woman in *Concertina's Rainbow* (Curtain Up Award), Katharine in *Youth and Asia* (New Theatre Best Actress Award), Vera in *4000 Miles*, and Grandma Kurnitz in *Lost in Yonkers*. TV includes *Burn Notice* and *Key West*. Harriet is a 10-time Carbonell Award nominee and a recipient of the Bill Hindman Carbonell Award for her contribution to the arts. Proud member of AEA and SAG/AFTRA.



**J. BARRY LEWIS
(Director)**

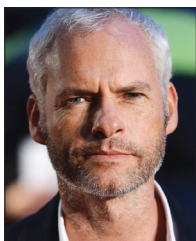
For PBD: *Arcadia*, *Outside Mullingar*, *The History Boys*, *Lady Day at Emerson's Bar & Grill*, *Buried Child*, *Our Town*, *Tryst*, *Old Times*, *Of Mice and Men*, *Dancing at Lughnasa*, *Talley's Folly*, *The Fantasticks*, *The Pitmen Painters*, *All My Sons*, *Dinner with Friends*, *Candida*, *The Gin Game*, *Three Tall Women*, *Copenhagen*, *Private Lives*, *The Weir*, *The Chairs*, *Souvenir*, *Benefactors*, *The Fourth Wall*, *Side by Side by Sondheim*, *Betrayal*, *The Smell of the Kill*, *That Championship Season*, *Berlin to Broadway*, *The Boys Next Door*, *Jacques Brel Is Alive and Well and Living in Paris*, and *No Exit*. He is honored to be the a recipient of the Richard Fallow Award for Excellence in Professional Theatre presented annually by the Florida Professional Theatres Association.



He is the recipient of five Carbonell Best Director Awards, including last season's *Buried Child*. "For all the designers who have made my stage efforts look better than deserved, I extend my thanks for the creative work you bring to the process... Salute!"

MARTIN McDONAGH (Playwright)

is one of the most celebrated playwrights of his generation. Born to Irish parents in London in 1970, he achieved great success with his first play, *The Beauty Queen of Leenane* (1996), part of a trilogy that includes *A Skull in Connemara* and *The Lonesome West*. (PBD staged *Beauty Queen* in 2011.) *The Cripple of Inishmaan* is the first play in his Aran Islands trilogy, which was followed by *The Lieutenant of Inishmore* and the unproduced *The Banshees of Inisher*. Other plays include *The Pillowman*, *A Beheading in Spokane*, and *Hangmen*. McDonagh has received two Olivier Awards and four Tony Award nominations. In recent years, he has devoted much of his time to film as both a writer and director. His best known movie is *In Bruges* (2008), which starred Colin Farrell, Brendan Gleeson, and Ralph Fiennes.



JAMES DANFORD (Stage Manager)

is back – with a vengeance. He's worked as an Equity stage manager for over 35 years, totaling 175-plus shows all over the country, with stars like Billy Crystal, Shirley MacLaine, Howard Keel, Martha Raye, Michael Feinstein, Phyllis Diller, Gregory Harrison, Van Johnson, and most of the cast of *M*A*S*H*. He was also stage manager of a national tour with Tim Conway and Tom Poston that kept him laughing for 20 weeks all over the country. He is delighted to be working again with his long-time cohorts here at PBD.



VICTOR BECKER (Scenic Design)

PBD: *The History Boys*, *Les Liaisons Dangereuses*, and *Old Times*. Florida Stage: *The Cha-Cha of a Camel Spider*, *Dirty Business*, *Ward 57*, and *Black Sheep*. He has designed at the Guthrie Theatre, the Oregon Shakespeare Festival, the National Theatre of the Deaf, Syracuse Stage (including a national tour of *Cyrano*), Milwaukee Rep, Atlanta's Alliance Theatre, Buffalo's Studio Arena, Indiana Rep, Missouri Rep, Cincinnati Playhouse, Portland Center Stage, and many others. Victor has also been a space planner and an architect wrangler for new museums and science centers, and is currently contributing to a book, *The Museum Manager's Compendium*.

FRANNE LEE (Costume Design)

First NYC play: Andre Gregory's *Alice in Wonderland*, for which she received an Obie Award. Her many Broadway shows include Hal Prince's productions of *Candide* and *Sweeney Todd*, both of which earned her Tony Awards. TV credits include the first five years of *Saturday Night Live*; she won an Emmy Award for creating the iconic looks of such *SNL* characters as the Bees, the Coneheads, Emily Latella, and the Blues Brothers. Movie credits include John Sayles' *Baby It's You*, Paul Simon's *One-Trick Pony*, David Lynch's *Industrial Symphony No. 1*, and two films starring Al Pacino, *The Local Stigmatic* and *Chinese Coffee*. In the fall of 2008, Franne had the honor of being included in "Curtain Call: Celebrating A Century of Women Designing for Live Performance," an exhibition at the New York Library for the Performing Arts at Lincoln Center. Franne is very happy to have been asked to design the costumes for PBD's production of *The Cripple of Inishmaan*, and to hang out in South Florida.

PAUL BLACK (Lighting Design)

Local credits include *Tru*, *The Night Of The Iguana* (Carbonell Award), *Outside Mullingar*, *The History Boys*, *Our Town*, and *Old Times* for PBD; *Doubt*, *A Chorus Line*, *Singin' in the Rain*, *Joseph and the Amazing Technicolor Dreamcoat*, *The Sound of Music*, *The Wiz*, and *Les Misérables* for Maltz Jupiter Theatre. Regionally, Paul has designed for the Walnut Street Theatre, Fulton Theatre, Arizona Theatre Company, Phoenix Theatre, Childsplay, Maine State Music Theatre, Theatre Aspen, Music Theatre of Santa Barbara, American Stage, and Carousel Dinner Theatre, and was the resident lighting designer at Actors Theatre of Phoenix for 13 years. He is the



Theatre To Think About

recipient of 12 arIZoni Theatre Awards, and has been nominated twice for a Barrymore Award (Greater Philadelphia).

STEVE SHAPIRO (Sound Design)

PBD: *Arcadia*, *Outside Mullingar*, *Les Liaisons Dangereuses*, *Dancing at Lughnasa*, *The Effect of Gamma Rays on Man-in-the-Moon Marigolds*, *The Gin Game*, *Copenhagen*, *Private Lives*, *At Home at the Zoo*, *The Chairs*, *Souvenir*. After 20 years in South Florida, Steve moved to Pittsburgh in 2010 to become resident sound designer for Pittsburgh Playhouse. For 16 years he was sound designer for the Coconut Grove Playhouse, where he designed over 85 productions. He has also designed for Area Stage Company, New Theatre, Actors' Playhouse, Caldwell Theatre Company, Mosaic Theatre, and City Theatre. Other credits include the Russian language premiere of *The Skin of Our Teeth* in Novosibirsk, Russia; helming the sound board for the 1995 South American tour of *The Phantom of the Opera*; and composing the score and designing the sound for Allen Ginsberg's only play, *Plutonian Ode*.

BEN FUREY (Dialect Coach) This is Ben's ninth show at PBD. Broadway includes *The Encounter*, *The Curious Incident of the Dog in the Night-Time*, *King Charles III*, *Matilda*, *The*

Last Ship, *Billy Elliot*, *Side Show*, and *Spamalot*. Off-Broadway includes multiple productions at Manhattan Theatre Club, Barrow Street Theatre, Roundabout Theatre Company, Atlantic Theatre Company, Lincoln Center Theater, and Signature Theatre Company. National tours include *A Gentlemen's Guide to Love and Murder*, *Curious Incident...*, *Mamma Mia*, *Billy Elliot*, *Spamalot*, *The Phantom of the Opera*. Regional/International includes productions at the Guthrie Theater, Two River Theater, Canon Theatre (Toronto), the Gate Theatre (Dublin), Dallas Theater Center, and Colorado Shakespeare Festival. Films include *Lost City of Z* and *Treasure Buddies*. TV includes *Elementary* and *Vine Talk*. Teaching: Juilliard and University of North Carolina School of the Arts.

ASHLEY HOROWITZ (Assistant Stage Manager) earned her BA in design/technical theatre from Florida Atlantic University, where she stage managed and assistant stage managed a total of 23 shows. Her first professional stage management credit was for The Women's Theatre Project's *Red Hot Patriot*. Since then, she has been enjoying her time as the assistant stage manager at PBD for the last three seasons. Special thanks to Mom, Dad, Kristian, and Dani for their endless support.

Actors' Equity Association (AEA) was founded in 1913 as the first of the American actor unions. Equity's mission is to advance, promote and foster the art of live theatre as an essential component of our society. Today, Equity represents more than 40,000 actors, singers, dancers and stage managers working in hundreds of theatres across the United States. Equity members are dedicated to working in the theatre as a profession, upholding the highest artistic standards.

Equity negotiates wages and working conditions and provides a wide range of benefits including health and pension plans for its members. Through its agreement with Equity, this theatre has committed to the fair treatment of the actors and stage managers employed in this production.

AEA is a member of the AFL-CIO and is affiliated with FIA, an international organization of performing arts unions. For more information, visit www.actorsequity.org.



**PALM BEACH DRAMAWORKS GIVES SPECIAL THANKS TO
OUR VOLUNTEER USHERS**