

GRADUATE & PROFESSIONAL STUDENT INJURIES REPORT



2015-2016



1 HOW MANY STUDENTS REPORTED AN INJURY?

58 out of 7589 graduate and professional students

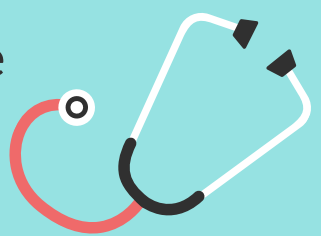
2 IN WHAT SCHOOL DID THE INJURIES OCCUR?

30 injuries - Veterinary Medicine

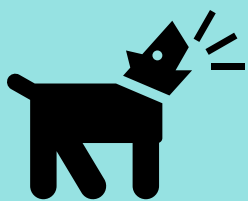
27 injuries - Graduate School

1 injury - Johnson

1 injury - Law



3 WHAT WERE THE TOP FIVE WAYS STUDENTS WERE INJURED?



23 animal-related

10 needle sticks/sharps

9 contact with equipment or tool

5 trip, slip, fall

5 exposure to gas/chemical



4 ARE GRADUATE STUDENTS ELIGIBLE FOR WORKERS' COMPENSATION?



Yes

Details: See policy on workers' compensation at gradschool.cornell.edu/policies

5 WERE ANY INJURIES COVERED BY WORKERS' COMPENSATION?



Yes

Four injuries

6 HOW MANY WORKERS' COMPENSATION CLAIMS WERE DENIED?



None

7 WHAT HAPPENS IF IT'S NOT A WORK-RELATED INJURY?

Your health insurance will provide coverage for medical treatment.

8 HOW ELSE DOES CORNELL SUPPORT INJURED STUDENTS?

The injury report triggers outreach from support offices across campus. They will assist you and help address any additional impacts.

