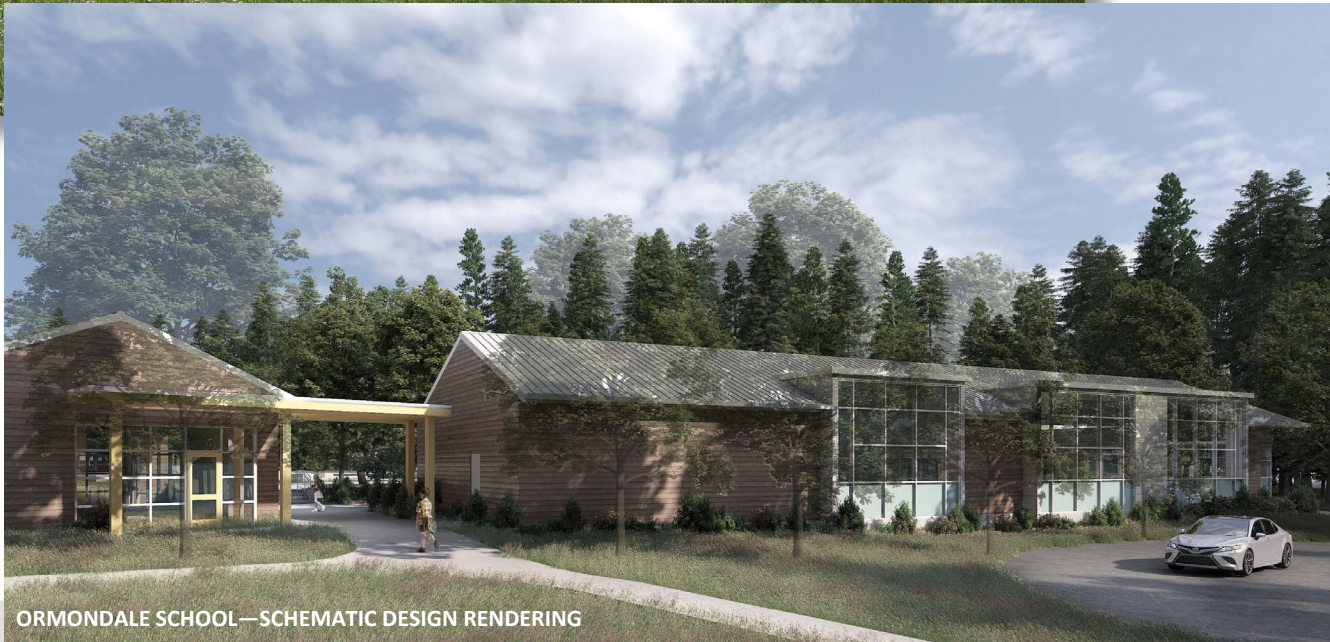




# PORTOLA VALLEY SCHOOL DISTRICT MEASURE Z BOND DESIGN UPDATE OPEN HOUSE



CORTE MADERA SCHOOL—SCHEMATIC DESIGN RENDERING



ORMONDALE SCHOOL—SCHEMATIC DESIGN RENDERING

The Portola Valley School District invites you to join us for an opportunity to see the designs of the new classroom buildings at Ormondale and Corte Madera! The District Administration and Design Team will be available to answer questions (no formal presentation will be made). Both schools' plans will be displayed and discussed at each event.

Light refreshments and snacks will be served.

## **TIMES & LOCATIONS**

**Ormondale School - Library**  
On Tuesday, November 5, 2019  
From 8:30 a.m. - 10:00 a.m.

**Corte Madera School - Room 102**  
On Thursday, November 7, 2019  
From 5:00 p.m. - 6:30 p.m.