

What Is Available on the Learning Management System?

At www.tranelearningresources.com, there are over 65 eLearning courses available for free to you and your employees. This offering includes Product Sales, Product Technical, HVAC Fundamentals, Customer Service, Sales Tools courses and many others.

Popular Courses

- Schematics and Electrical Fundamentals
- TXV: All You Need to Know
- Introduction to the TEM8 & TAM9 Air Handler Platform
- 1050 Control: User Setup Wizard
- S Series S9V2 Furnace Installation
- Why Trane
- S Series Furnace Widescreen Wisdom
- Variable Speed Outdoor Product



Learning Paths

- Management Essentials Learning Path
- Trane RSP Learning Path
- Introduction to the HVAC Business and Trane
- NATE Learning Path
- Customer Service Skills Learning Path
- Communicating Learning Path

Manager Capabilities

The eLearning site also allows you to manage your employee's learning! As a manager, you will be able to **create learning paths** for your employees, **assign courses** to your employees and **run reports** of their learning history and progress. To request to be setup as a manager at Trane's eLearning site, email your request to learningresources@irco.com.

SkillSoft eLearning Courses



SkillSoft is an industry leader in personal and professional eLearning courses. The library includes Business and Desktop Skills courses. With a low annual subscription fee of \$75 per user, you will have unlimited access to thousands of eLearning courses.

How do I log in to the Trane Learning Management System (LMS)?



Login to www.ComfortSite.com and select Training Center from the left menu. Click Trane LMS - Single Sign On. Or Go to www.tranelearningresources.com and use your ComfortSite username as your username and welcome as your password.



Product Sales

- 1050 Control: User Setup Wizard
- 1050 Control: Introduction to the Home Screen
- Why Trane
- S Series Furnace Widescreen Wisdom
- Nexia™ Diagnostics
- Introduction to Trane VRF Systems
- Trane Ductless Overview
- Nexia™ Home Intelligence Dealer Sales Guide
- Nexia™ Home Intelligence Frequently Asked Questions
- TruComfort™ Variable Speed Sales
- ComfortLink™ II Consumer Benefits
- ComfortLink™ II Sales
- ComfortLink™ II Remote Thermostat Sales
- CleanEffects™: 10 Minute Tutorial

Sales Tools & Customer Experience

- TCS™ Program Overview
- Trane Consumer Financing
- Professional U: Telephone Skills, Part 1
- Professional U: Telephone Skills, Part 2
- Customer Service Part I: Communicating Skills
- Customer Service Part II: Resolving Conflict
- Extended Warranty
- Women Consumers=Profits

Technical Basics

- HVAC Basics
- Gas Heat Equipment*
- Gas Heat Foundation*
- Introduction to R410A

Bolded courses are available to be played on a tablet.

*In order to receive NATE credit for NATE recognized eLearning courses, please submit your printed certificate to NATE. For more information, go to NATE's website: www.natex.org or call NATE at 877-420-NATE.

Product Technical

- Schematics and Electrical Fundamentals*
- TXV: All You Need to Know*
- Introduction to TEM8 & TAM9 Air Handler Platform
- S Series S9V2 Furnace Installation*
- Pro Series Ductless Installation*
- Setting Up the 824 and 850 Controls
- Introduction to Trane VRF Systems
- Variable Speed Outdoor Product Technical*
- XL850 & XL824 User Setup Wizard
- Nexia™ Home Intelligence Installation with XL624 Control
- Nexia™ Home Intelligence Installation with ComfortLink™ II Control
- Nexia™ Home Intelligence and Wireless Technology Guide
- Nexia™ Home Intelligence Technical FAQs
- ComfortLink™ II Controls Technical*
- ComfortLink™ II Furnace Technical*
- ComfortLink™ II Heat Pump/Air Conditioner Technical*
- Troubleshooting Electronic Expansion Valves

Parts Series

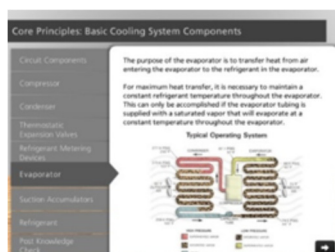
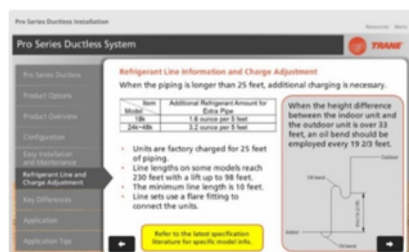
- | | |
|-------------------------|--------------------------------|
| • Control Boards | • Installation Items II |
| • Filter Driers | • Motors |
| • Gas Valves | • Service Parts I |
| • General Furnace Parts | • Specialized Tools |
| • Installation Items I | • Thermostats and Transformers |

Core Principles

- | | |
|------------------------------------|-----------------------------|
| • Air Volume Measurement* | • Motors* |
| • Basic Cooling System Components* | • Ohms Law* |
| • Basic Cooling System Operation* | • Properties of Air* |
| • Basic Heat Pump Operation* | • Schematics* |
| • Basic Refrigeration* | • Superheat & Subcooling* |
| • Compressor Start Circuit* | • Three Phase Line Voltage* |
| • Electronic Components* | • Transformers* |
| • Inductance & Capacitance* | • Watts* |

Go to www.tranelearningresources.com and use your ComfortSite user id as your username and welcome as your password.

Trane Learning Resources offers you and your employees free eLearning courses good towards NATE recertification hours. Our current offering includes 24 eLearning courses worth over 35 hours of training!



NATE ID # are listed below. To receive NATE credit, each user will need to submit their printed completion certificates directly to NATE. If you have questions regarding NATE, go to www.natex.org or call 877-420-6283.

- Core Principles: Air Volume Measurement - 1010-0014 = 1 hour
- Core Principles: Basic Cooling System Components - 1010-0029 = 1 hour
- Core Principles: Basic Heat Pump Operation - 1010-0031 = 1 hour
- Core Principles: Basic Refrigeration - 1010-0032 = 1 hour
- Core Principles: Basic Cooling System Operations - 1010-0030 = 1 hour
- Core Principles: Compressor Start Circuit - 1010-0015 = 1 hour
- Core Principles: Electronic Components - 1010-0016 = 1 hour
- Core Principles: Inductance and Capacitance - 1010-0017 = 1 hour
- Core Principles: Motors - 1010-0018 = 1 hour
- Core Principles: Ohms Law - 1010-0019 = 1 hour
- Core Principles: Properties of Air - 1010-0020 = 1 hour
- Core Principles: Schematics - 1010-0021 = 1 hour
- Core Principles: Superheat and Subcooling - 1010-0022 = 1 hour
- Core Principles: Three-Phase Line Voltage - 1010-0023 = 1 hour
- Core Principles: Transformers - 1010-0024 = 1 hour
- Core Principles: Watts Law - 1010-0025 = 1 hour
- Gas Heat Foundation - 1010-0046 = 1 hour
- Gas Heat Equipment - 1010-0048 = 1 hour
- ComfortLink™ II AC/HP Technical - 1010-0055 = 1 hour
- ComfortLink™ II Controls Technical - 1010-0037 = 1 hour
- Variable Speed Outdoor Product Technical – 1010-0066 = 8 Hours
- Pro Series Light Commercial Ductless Installation - 1010-0067 = 1.5 Hours
- S Series S9V2 Furnace Installation – 1010-0069 = 3 Hours
- TXV: All You Need to Know – 1010-0070 = 4 Hours
- Schematics and Troubleshooting Fundamentals – 1010-0072 = 2 Hours

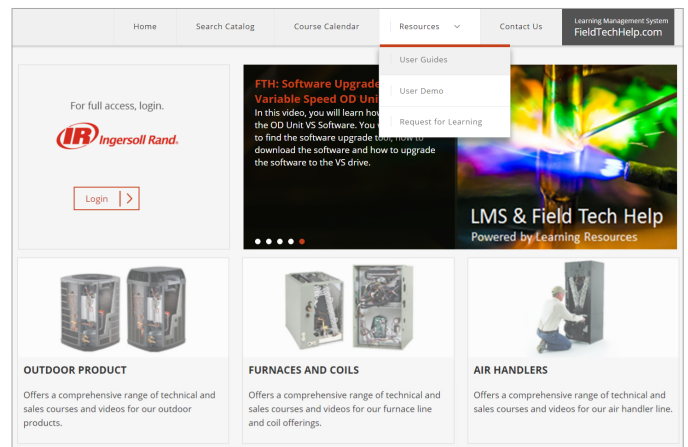
Log in to www.tranelearningresources.com using your ComfortSite username and welcome as the password. Search for *NATE*.

What Is Available on FieldTechHelp.com

At www.fieldtechhelp.com, there are over 40 technical videos available for free to you and your employees. This offering includes outdoor product videos, furnace and coils videos, air handler videos, Nexia videos and many others. No login required! You can conveniently play videos from wherever you are with the touch of a fingertip. You are also able to login to our Learning Management System from this page to access our eLearning courses.

Popular Videos

- AFC Board for TEM8 and TAM9
- Software Upgrade Video for Variable Speed OD Units
- Nexia Diagnostics
- S9V2 - LEDs
- XL850 and XL824 Nexia Setup
- XL850 and XL824 Installer Setup Wizard



Field Tech Help Video (no login needed)



eLearning Course (login needed)

Questions? Email us at learningresources@irco.com.

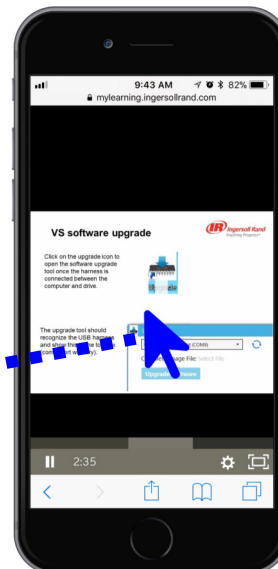
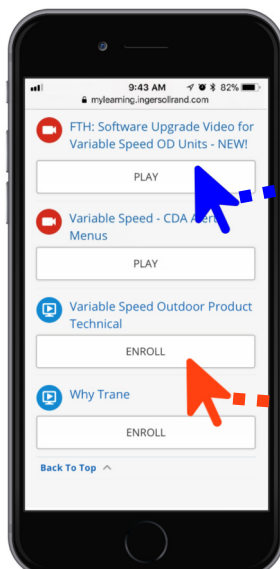
Play Video

How do I play the videos?

Choose Category



Choose Video or Course



Login to Play Course

