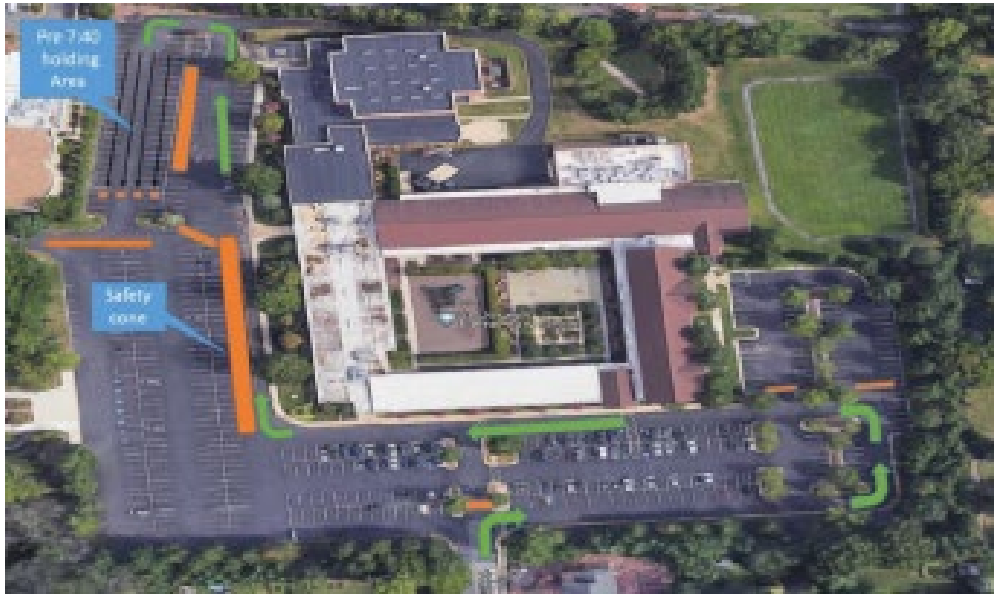


Morning Drop-Off



Morning Carpool drop-off begins at 7:40 a.m.

If you arrive on campus prior to 7:40, turn to the right and follow the path created by the traffic cones. Continue towards the front of the school and past the gym entrance. Loop around, and enter the parking area adjacent to the gym. Here cars form four lines, designated by traffic cones. Parents wait with students until school personnel begin the carpool drop off process. Once the carpool process begins, students exit their cars and walk to the school entrance. **STUDENTS MUST FOLLOW THE MASKING PROTOCOL AS ANNOUNCED.** Cars will be dismissed from this area at the direction of school personnel, and exit the campus using Franciscan Way.

Cars arriving after 7:40 will pull up along the sidewalk, and students may exit vehicles as soon as the vehicle is stopped and it is deemed safe to exit. Students must walk on the sidewalk and enter the school through the student entrance that faces the Church, or the student entrance adjacent to the flagpole, or through the gym doors. **STUDENTS MUST FOLLOW THE MASKING PROTOCOL AS ANNOUNCED.** To prevent crowding at doorways, students may exit their cars from the side of the school that faces the Church **ONLY**. Please refrain from using your vehicle's trunk to transport book bags. Thank you for your cooperation in the safety of our students.

During the morning dropoff please **DO NOT** allow your child to exit your car before you reach the **white line** at the corner by the flagpole door. This plan will help prevent bottlenecks at each door. Please bring your patience as we settle in. Your cooperation is appreciated.



Dismissal Carpool



The dismissal carpool procedure:

- Enter St. Joseph School property at Peachtree Street.
- Proceed to CAR or VAN lane. The first three lanes are for cars. The fourth lane is a pedestrian lane. The fifth lane and beyond are for vans and SUVs.
- TURN OFF ENGINE. Please remain in your vehicle.
- Students exit building and proceed to their vehicles. **Vehicles are stopped in the second carpool lanes once the students begin to exit the building.
- Once the students are all in their vehicles, the signal is given to TURN ENGINE ON.
- As directed by a faculty member, first carpool proceeds out of the parking lot via "Franciscan Way" Road. • Second carpool is directed into vacated CAR lanes.
- Please turn off your engines; students will proceed to their cars when directed. Once first carpool has exited the parking lot, second carpool exits.

Students are not permitted in the second carpool area. Students remaining after the third round of cars will be directed to Extended Day and parents will be charged accordingly.

PLEASE NOTE:

- For the safety of all, the speed limit in the parking lot is 5 M.P.H.
- Cell phone usage while driving is prohibited.
- Pets are not allowed on school grounds

To prevent the spread of the Coronavirus, parents are asked to wear masks, to stay in their cars, until students are dismissed, and keep social distance if exiting the car to help younger children.

