

FOR SALE. JUST REDUCED TO \$1,100,000!



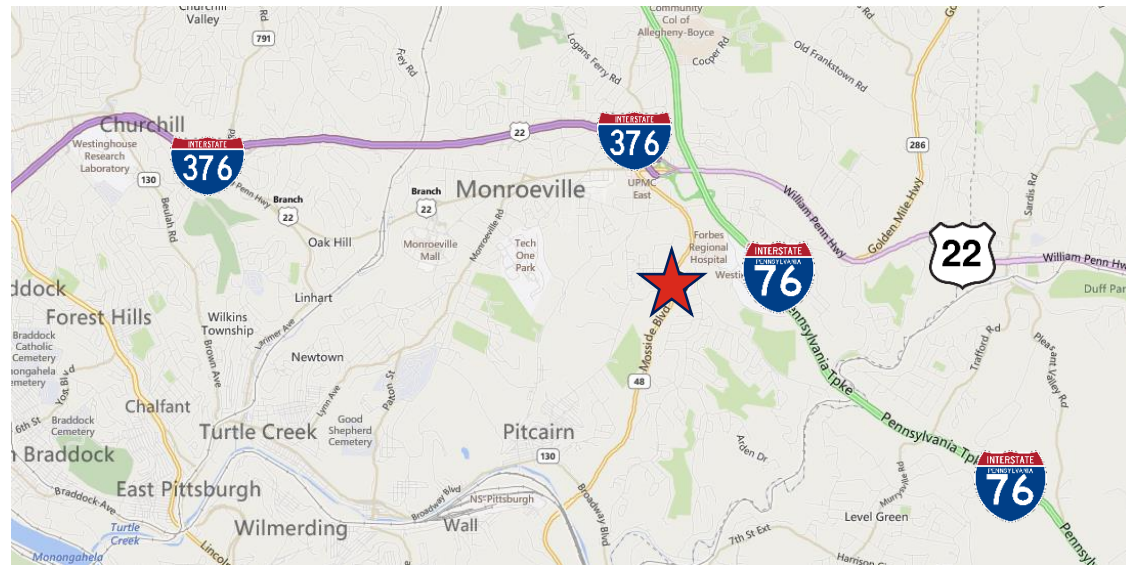
11,340 SF Medical Office Building

2490 Mosside Boulevard, Monroeville, PA 15146

OUTPATIENT MEDICINE, THE WAY OF THE FUTURE

FOR SALE. JUST REDUCED TO \$1,100,000!

- 11,340 total sf on 2 floors
- Abundant parking
- Excellent building condition
- Recent renovations
- Ideal for single or multiple occupants
- Code compliant
- Frontage / Visibility on Mossdale Blvd.
- Highway accessibility
(I-76, I-376, SR-22)
- Accessibility to Monroeville area amenities
- Above standard parking ratio 6/1000 SF



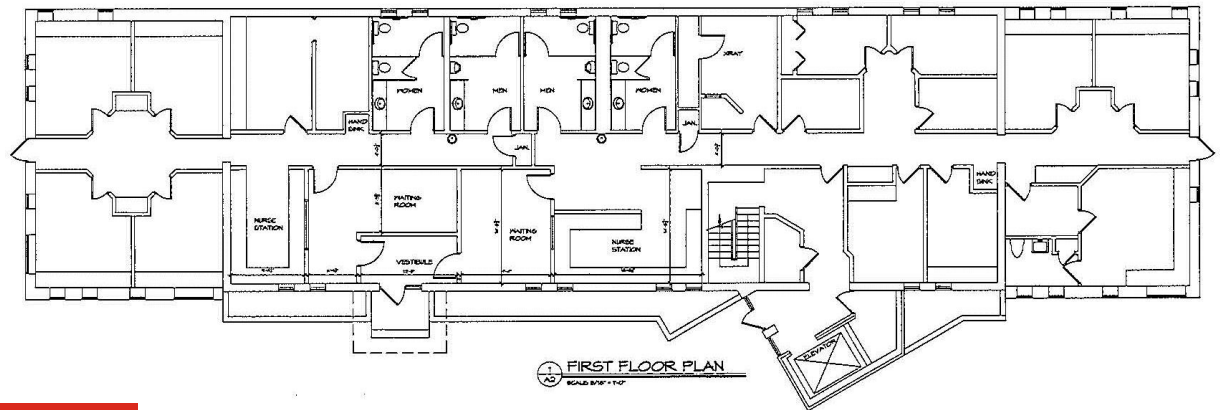
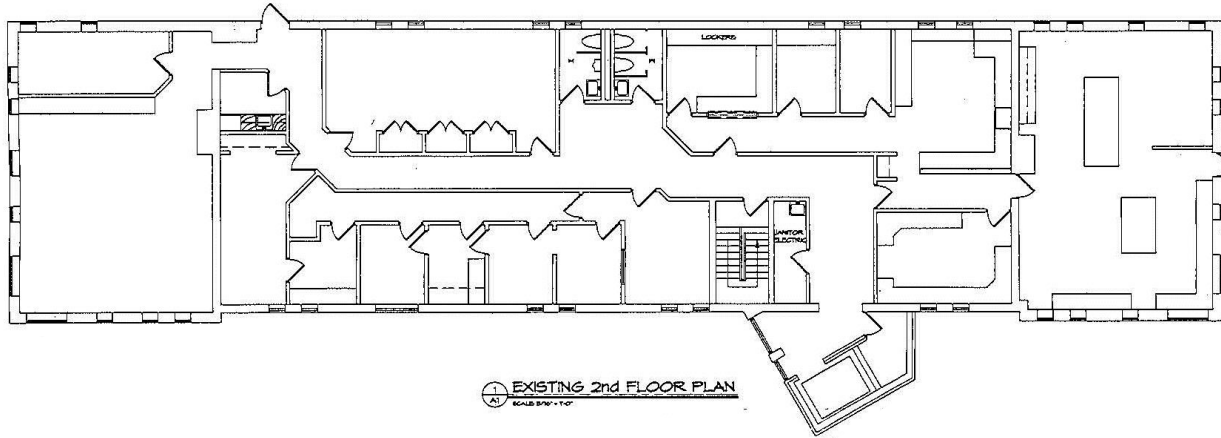
11,340 SF Medical Office Building

**2490 Mossdale Boulevard,
Monroeville, PA 15146**

Josephine Oria
D 412.457.0507
josephineoria@mhs-pci.com

Alfred Caminos
D 412.498.6995
acaminos@mhs-pci.com

FOR SALE. JUST REDUCED TO \$1,100,000!



11,340 SF Medical Office Building

2490 Mosside Boulevard, Monroeville, PA 15146

OUTPATIENT MEDICINE, THE WAY OF THE FUTURE