



Elevating the Health and Wellness of African American Infants and Moms in the San Gabriel Valley: SGV AAIMM Community Action Team

JANUARY 5, 2021

Today's Presentation

- Why We're Here: Life and Data
- What is the Root Cause?
- The Response: The AAIMM Prevention Initiative
- The Community Action Team
- Call to Action



“Black women are three to four times more likely to die from pregnancy-related causes than white women.”

– Centers for Disease Control and Prevention

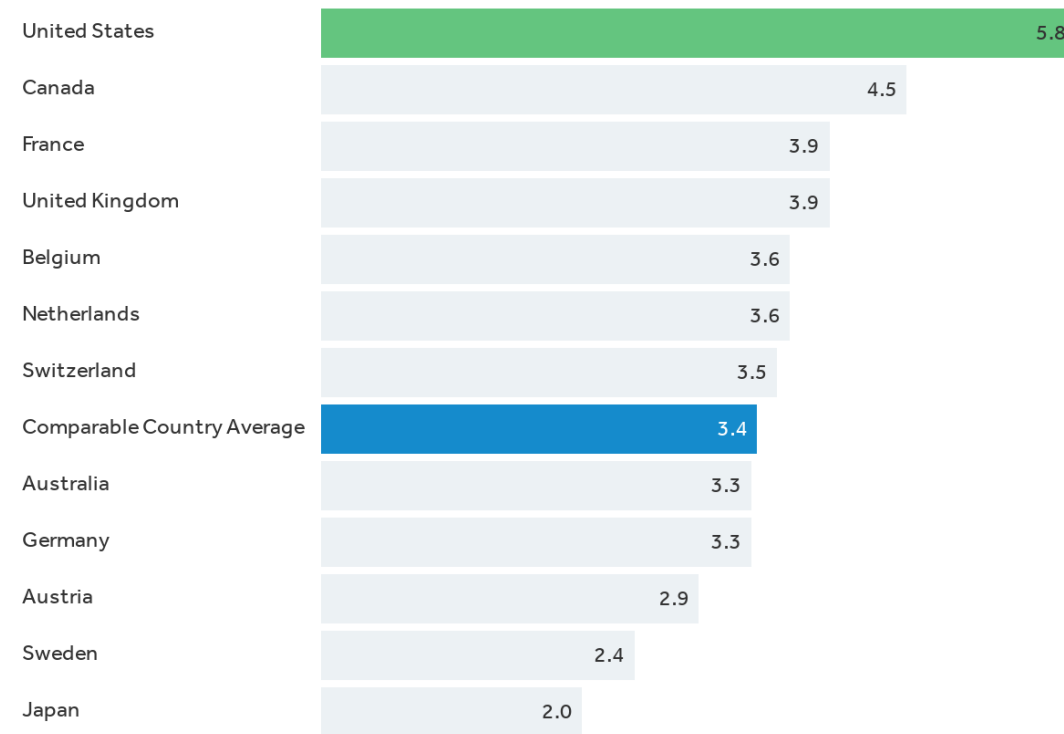
Source:

<https://www.heart.org/en/news/2019/02/20/why-are-black-women-at-such-high-risk-of-dying-from-pregnancy-complications>



<https://www.youtube.com/watch?v=S5CMkloNZQY>

Infant mortality per 1,000 live births, 2017



Note: 2016 data shown for Japan

Source: [KFF analysis of OECD data](#) • [Get the data](#) • [PNG](#)

Peterson-Kaiser
Health System Tracker

More babies die in the US than in other similar countries

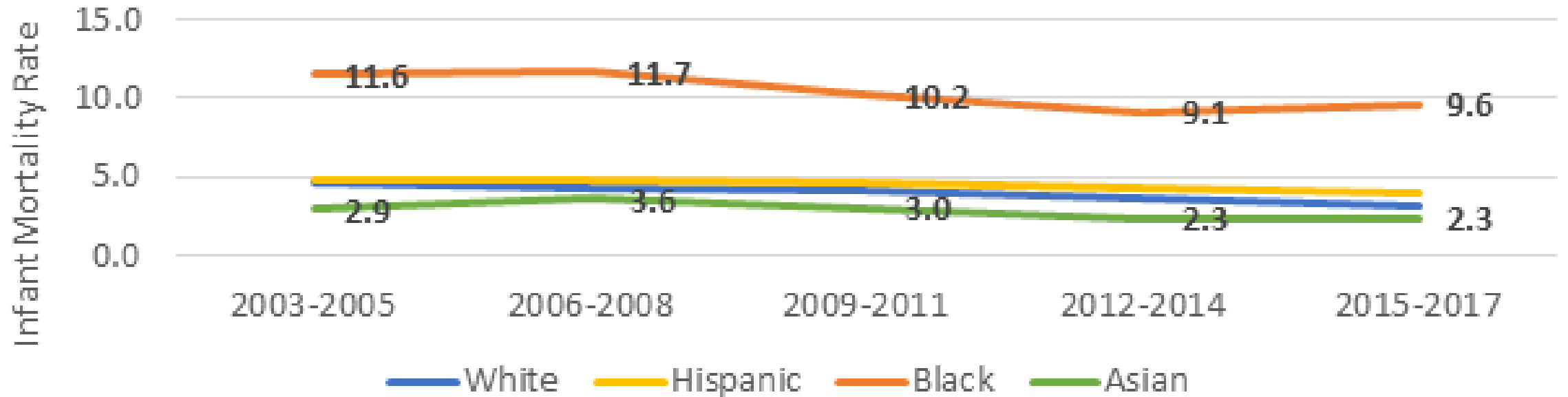
For more graphs: https://www.healthsystemtracker.org/chart-collection/infant-mortality-u-s-compare-countries/#item-infant-mortality-is-higher-in-the-u-s-than-in-comparable-countries_2019

	LA County 2012 (%)	LA County 2014 (%)	LA County 2016 (%)	LA County 2016			
				White (%)	Latina (%)	African American (%)	Asian (%)
Reported Ever Experiencing Discrimination							
Any discrimination	39.1	37.8	35.6	34.2	33.6	53.7	34.8
At work	17.4	16.8	16.3	21.2	12.7	24.8	17.8
When getting medical care	8.2	7.6	6.4	4.5	7.3	11.6	3.4
When getting housing*	9.1	8.0	7.0	4.4	6.9	18.5	6.0
Because of race/color	18.1	15.5	15.6	6.8	15.0	39.4	17.7
Because of gender	11.3	11.1	12.5	20.4	8.5	18.3	12.5
At home	NA	7.9	7.1	4.6	6.6	15.1	8.0
Because of breastfeeding	NA	5.9	8.3	10.5	7.9	9.1	6.5
Because of pregnancy	14.7	14.9	13.0	12.6	13.3	19.5	9.2

More than half of all African Americans experience discrimination

Source: 2016 Los Angeles Mommy and Baby Project Databook, Los Angeles County Department of Public Health.

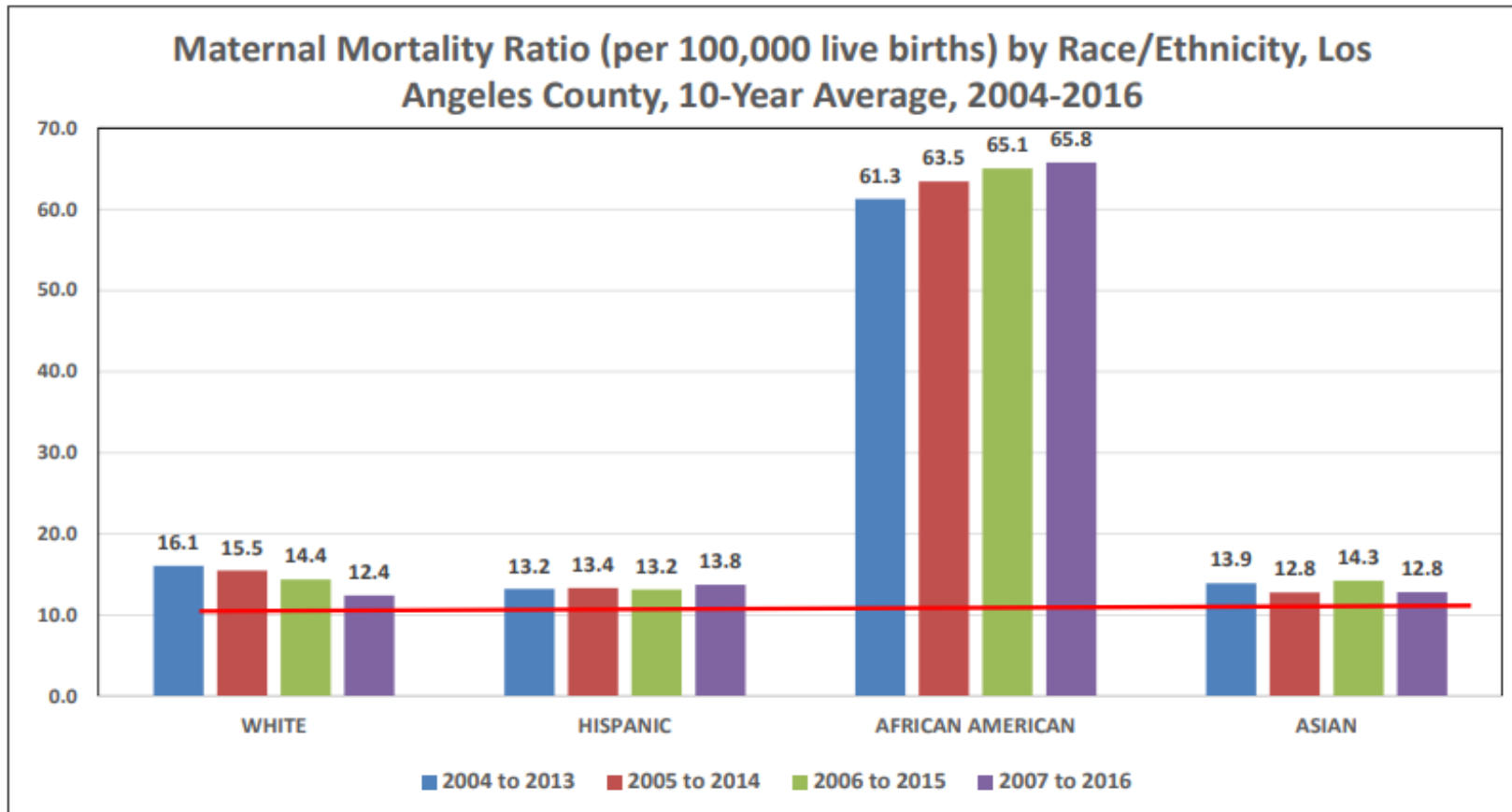
Figure x. Infant Mortality Rate (infant deaths/1,000 live births) by Mothers' Race/Ethnicity, 3-Year Averages, Los Angeles County 2003-2017



In LA County, Black babies have been dying 2-3x more than other babies

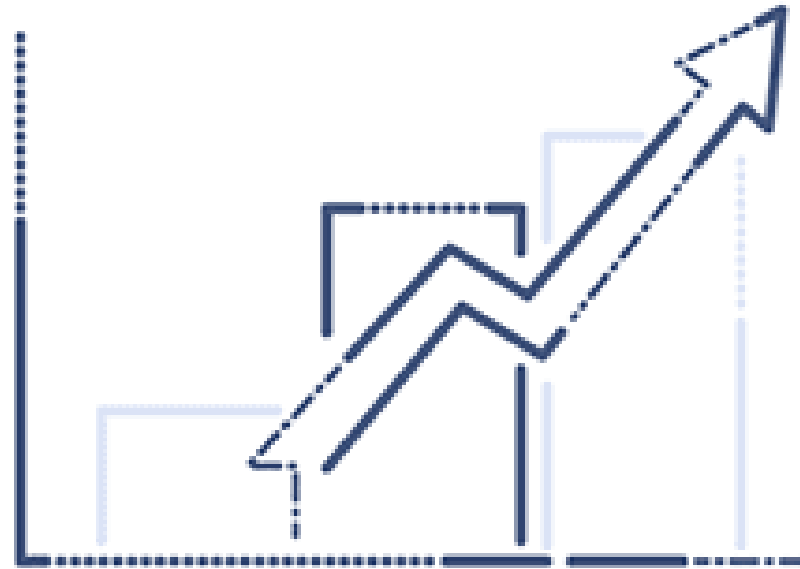
Notes: Infant mortality rate is defined as the number of deaths to infants within the first year of life per 1,000 live births. Data not shown for Native Americans, Pacific Islander, Other, and Unknown races. Three-year averages used to account for random and annual rate fluctuations.

Data Source: 2003-2017 California Department of Public Health, Birth and Death Statistical Master Files.



Maternal mortality is defined as any death during pregnancy and up to one year after childbirth. It is measured by the maternal mortality ratio (MMR), the number of maternal deaths for every 100,000 live births.

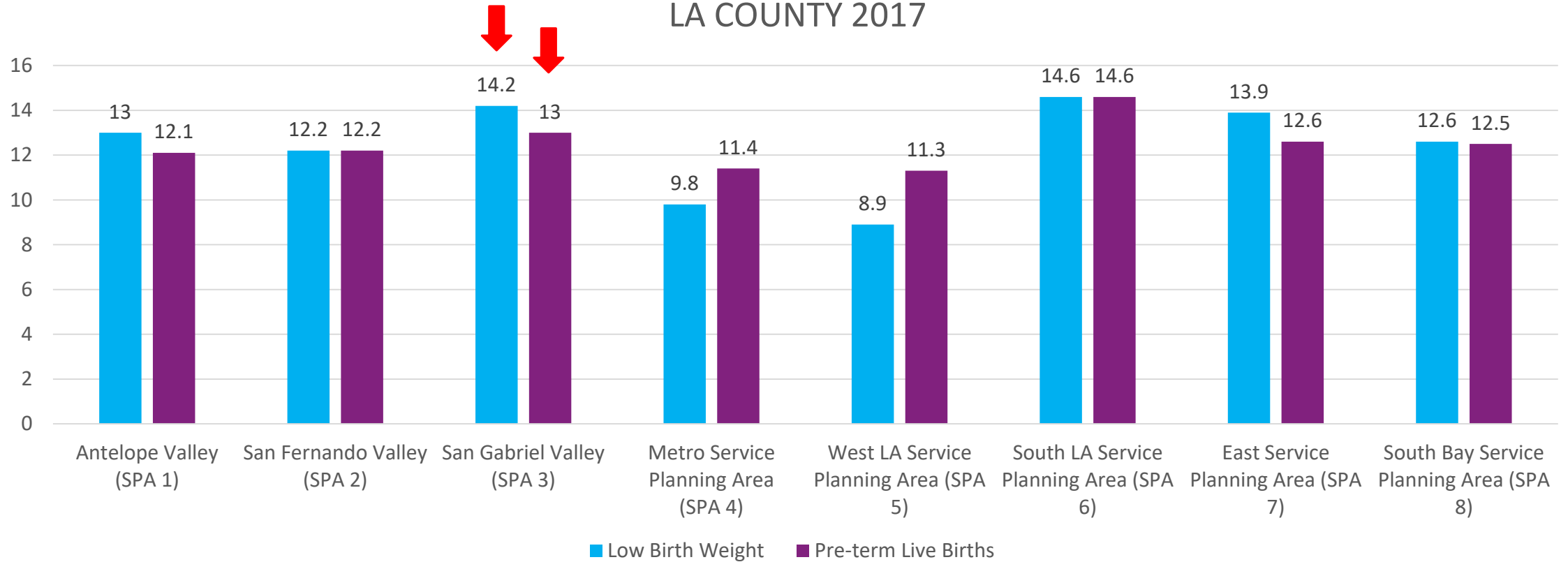
In LA County, Black mothers have been dying 4x more than other mothers, and is trending up



In LA County, premature birth is the main reason for infant deaths

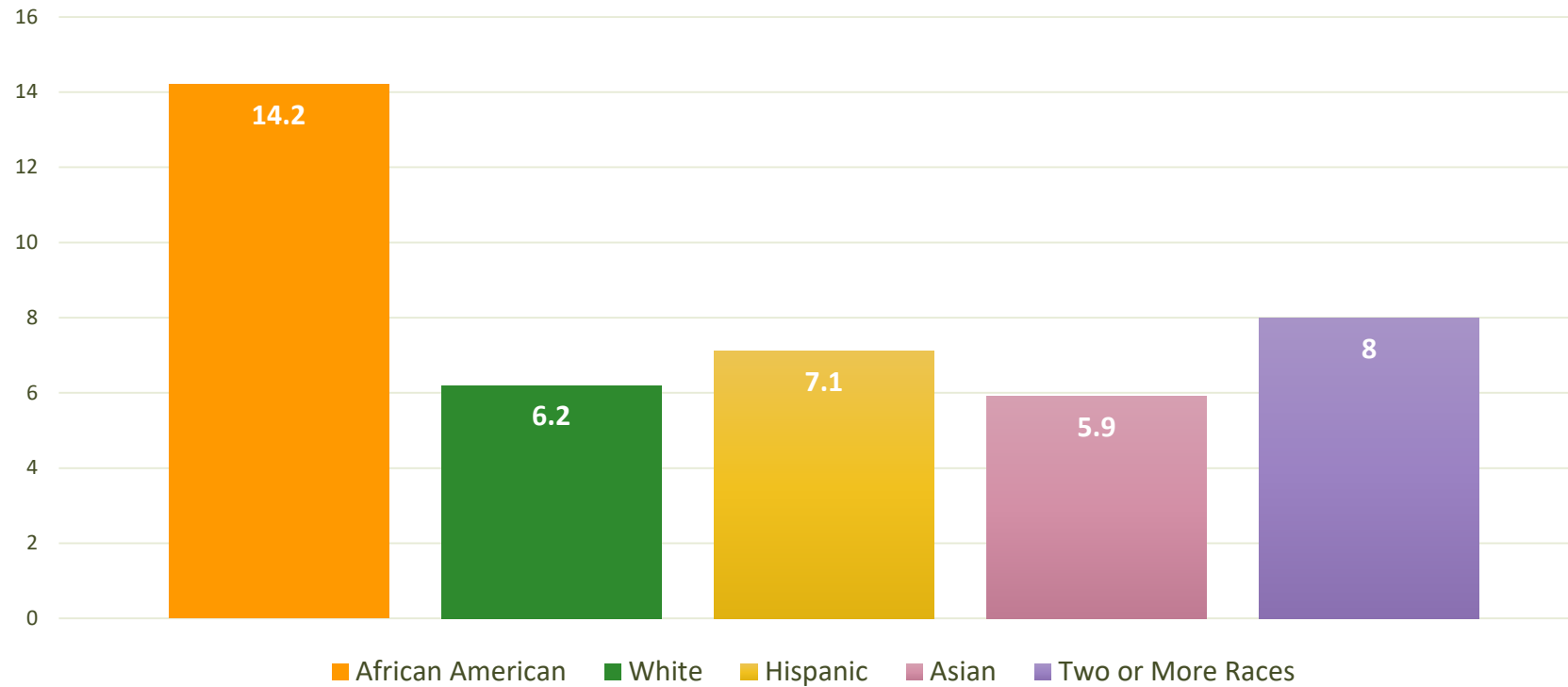
Source: Centers of Disease Control and Prevention (CDC), National Center for Health Statistics (NCHS), Division of Vital Statistics (DVS). Linked Birth / Infant Death Records 2008-2017, as compiled from data provided by the 57 vital statistics jurisdictions through Vital Statistics Cooperative Program

Percent Low Birthweight and Preterm Births in Black Mothers LA COUNTY 2017



San Gabriel Valley has the 2nd highest percent of preterm Black births and the 2nd highest percent of low birthweight babies

Percent Low Birthweight by Mother's Race in San Gabriel Valley 2017

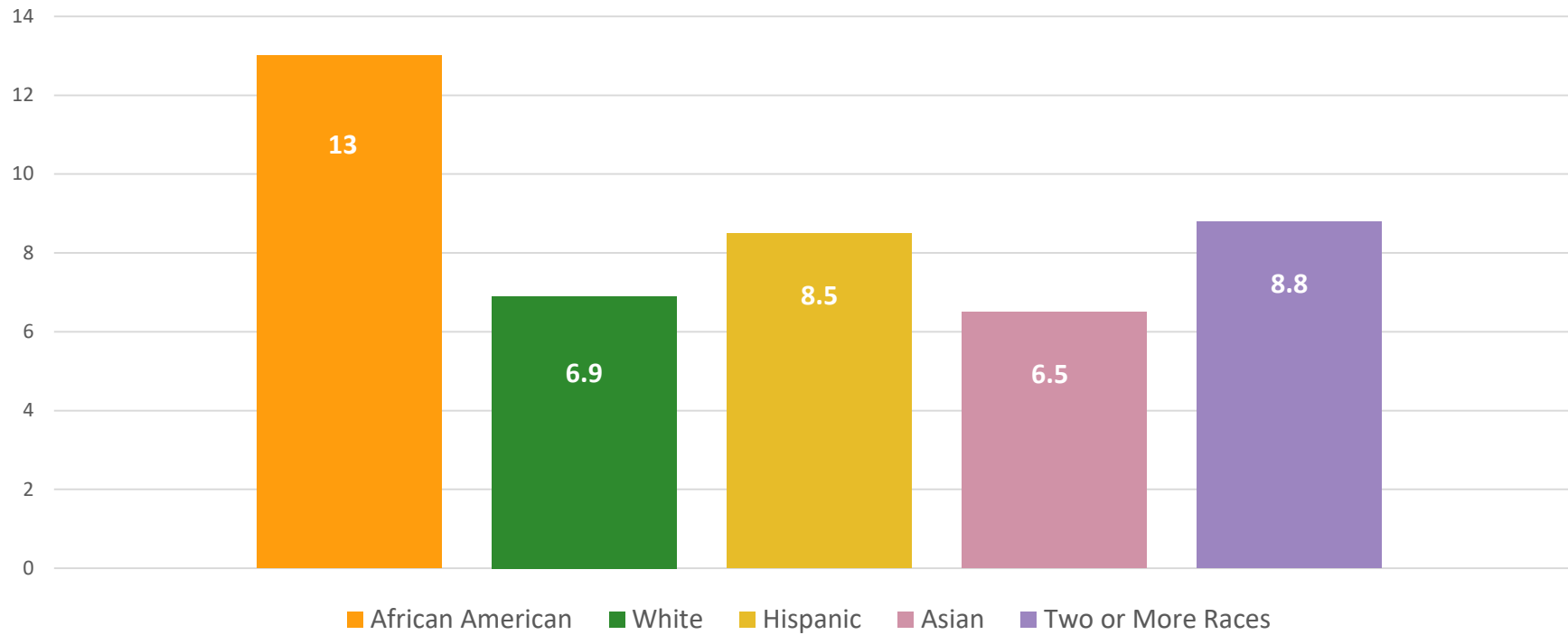


Note: Due to <5 reported cases, Pacific Islander and Native American populations could not be calculated.

In San Gabriel Valley, more Black babies have low birthweight

Source: Special Report, Maternal, Child, Adolescent Health Programs, Los Angeles County Department of Public Health

Percent Preterm Births by Mother's Race in San Gabriel Valley 2017



Note: Due to <5 reported cases, Pacific Islander and Native American populations could not be calculated.

In San Gabriel Valley, more Black babies are born premature



Join at
slido.com
#66708

What do these
numbers tell
you?

A large, ancient tree with thick, gnarled roots spreading out across the ground. The roots are a dark brown color and have a rough, textured surface. The background shows more trees and foliage, slightly out of focus. The overall lighting is soft and natural, suggesting a forest setting.

Root Cause

Is it
socioeconomic
status?



A secure job, a safe home and healthy food all contribute to health.

When you look at white mothers alone or Black mothers alone, better off moms have healthier babies.

Black women who have private insurance, which means they are employed, have worse outcomes than white women who receive public insurance.



Is it mother's
education level?

All over the world, women's education is associated with healthier births.

White and Black women who are well educated do have an advantage over those of the same race with less education.

LA County data shows that better educated Black mothers have worse birth outcomes than white women who did not complete high school.



Is it mother's
behavior?

While Black and white women tend to engage in different kinds of risky behavior, risk-taking seems to be evenly divided.

For example, white women in LA County drink alcohol during pregnancy more than Black women, while Black women smoke more than white women during pregnancy.

Risk-taking doesn't explain the gap. Black women in LA County who do not smoke have worse outcomes than white women who do.



Is it access to
healthcare?

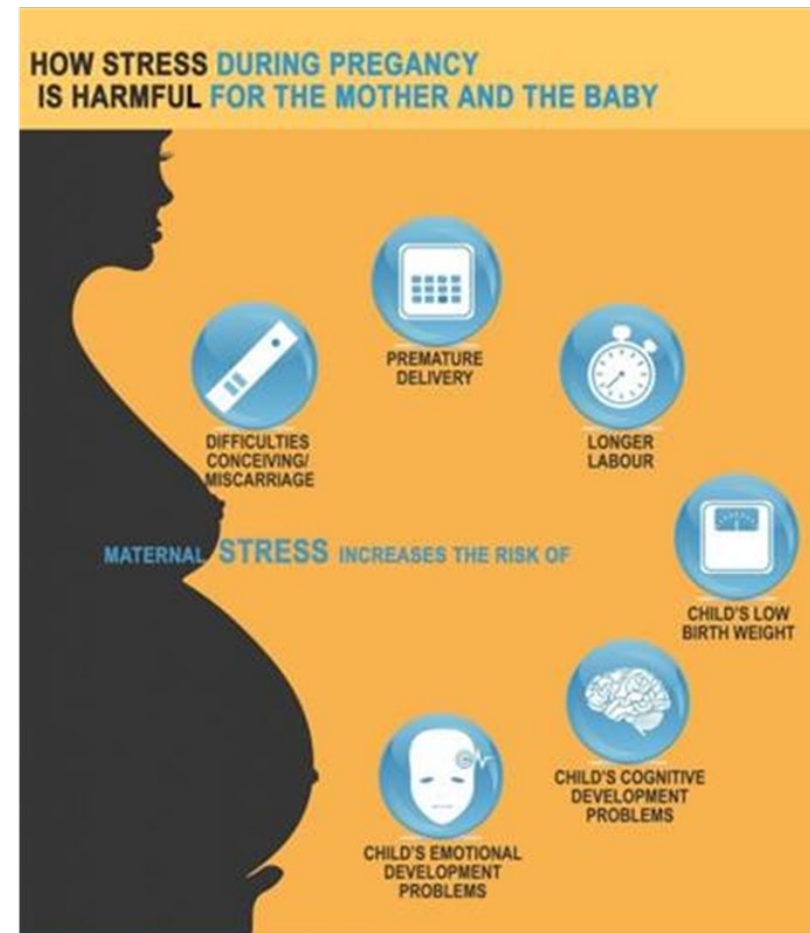


Once again, this is a real concern, but it doesn't explain the inequality we see in birth outcomes.

Black women who had adequate care had worse outcomes than white women who did not.



How Racism Can Affect Birth Outcomes



Source: <https://tmhome.com/benefits/pregnancy-stress-meditation-infographic/>

Racism

Psychological Stress

Physical Stress (Flight or Fight)

Cumulative Stress

Adverse Health Outcomes (and Pregnancy Outcomes)



Chronic Stress Impacts Pregnancy Outcomes

- Increases chances of premature baby (born before 37 weeks)
- Increases chances of low birthweight baby (less than 5.5 pounds)
- Perinatal Mood and Anxiety Disorders

A photograph of a woman with curly hair holding a young child with curly hair and glasses. They are outdoors, and the image is dimmed to serve as a background for the text. The woman is wearing a patterned top, and the child is wearing a white shirt and patterned shorts.

The African American Infant and Maternal Mortality Prevention Initiative

African American Infant and Maternal Mortality Prevention Initiative

AKA

AAIMM
Prevention
Initiative

Aspirational Goal

Eliminate racism and reduce the effects of racism on Black women's bodies

Initiative Goal

Reduce the Black-White infant mortality gap in LA County by 30% over 5 years (2018-2023)

Reduce the maternal mortality gap in LA County (metrics TBA)

AAIMM Initiative Strategies



Create collaborative structures to support progress at local and county levels



Reduce women's exposure to stressors in the social environment



Block the pathway from social stress to physiological stress



Intervene as early as possible if and when stress has taken a toll on health



AAIMM Initiative Structure



Management Team

DPH and First 5 LA



Dedicated Staff



Countywide Steering Committee

Health Agency,
F5LA, community &
clinical leaders



Community Action Teams

Health Agency, F5LA,
community & clinical
leaders, community
members



Countywide events



Partnerships & Strategic Alliances

AAIMM Doula Project



Who is Eligible?

Black and African American pregnant people living in South Los Angeles, the South Bay, Antelope Valley or San Fernando Valley are eligible for free Doula services.

What will my Doula Do?

Your Doula will provide support throughout your pregnancy.

Your Doula will also provide 3 prenatal visits, continuous labor support, 3 postpartum visits and lactation support.

Client Incentives

Participation in this program is voluntary and to show our gratitude for allowing us the opportunity to support you we have some great incentives that will be offered during various stages of your time in our program such as:

- Baby Items
- Safety/Childproofing Kits
- Books
- Gift Cards and more....

Contact us to get enrolled. We welcome participants at any stage of pregnancy. It's not too late for you to add a doula to your support team.

Contact: Michelle Sanders or Ariana White
Division of Maternal, Child & Adolescent Health
Los Angeles County Department of Public Health

Ph: (213) 639-6448

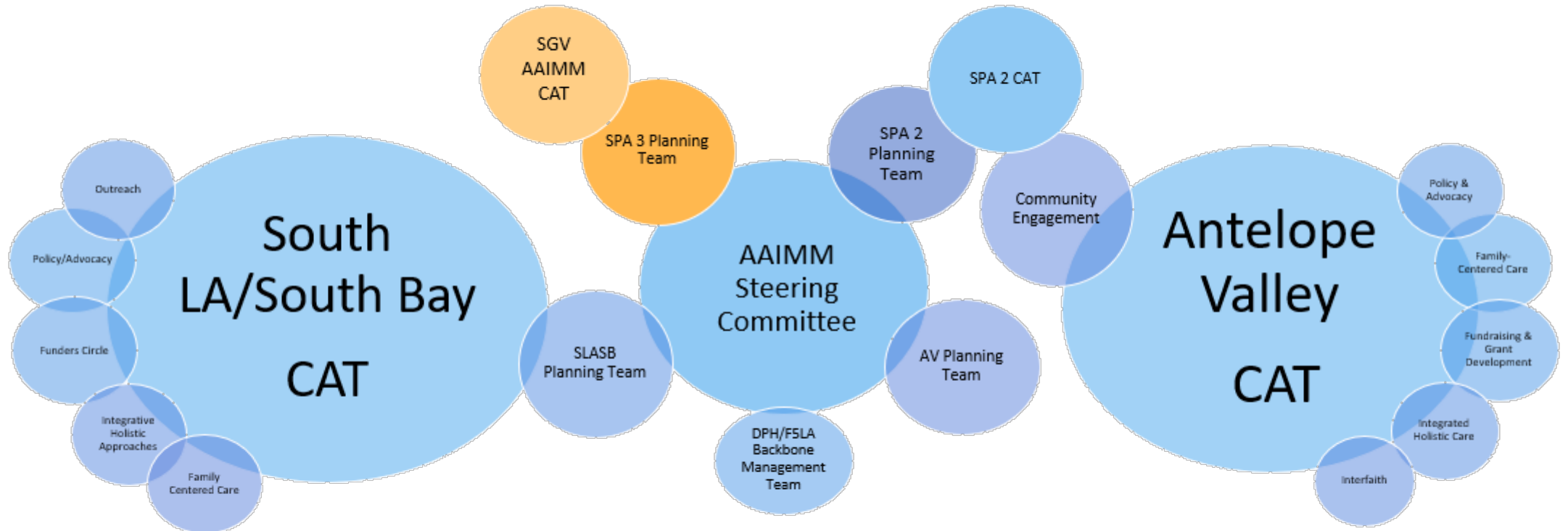
MSanders@ph.lacounty.gov/

AWhite@ph.lacounty.gov

Progress: Forward Momentum Across 2 Years

- Launch of countywide Steering Committee
- In partnership with LACDPH, secured 4 years of state Perinatal Equity Initiative funds for group prenatal, fatherhood, and preconception health
- Senate Bill 464, Dignity in Childbirth Act
- Doula program launched; ~200 families
- Tax prep events for Earned Income Tax Credit
- Groundswell of Activity – Sector Awareness with collaborations with ABWP, insurers, others
- 2 Community Action Teams covering 3 geographic areas with 2 more forming
- Robust, culturally appropriate communications platforms and messaging co-designed with community
- Implicit bias and anti-racism trainings of all county staff
- Launch of Village Fund
- Cherished Future Partnership

AAIMM CAT Collaboration Process



Acronyms

AAIMM	African American Infant & Maternal Mortality
CAT	Community Action Team
SGV	San Gabriel Valley

2020 Highlights from the San Gabriel Valley AAIMM Community Action Team



A woman with glasses and a headband is speaking into a megaphone. The megaphone has the word "PULSE" on it. She is in a crowd of people, and the background is blurred. The text "Call to Action" is overlaid on the image.

Call to Action

Who Is A Part of AAIMM?

We are united in one purpose:

To address the unacceptably high rates of Black infant and maternal deaths in Los Angeles County

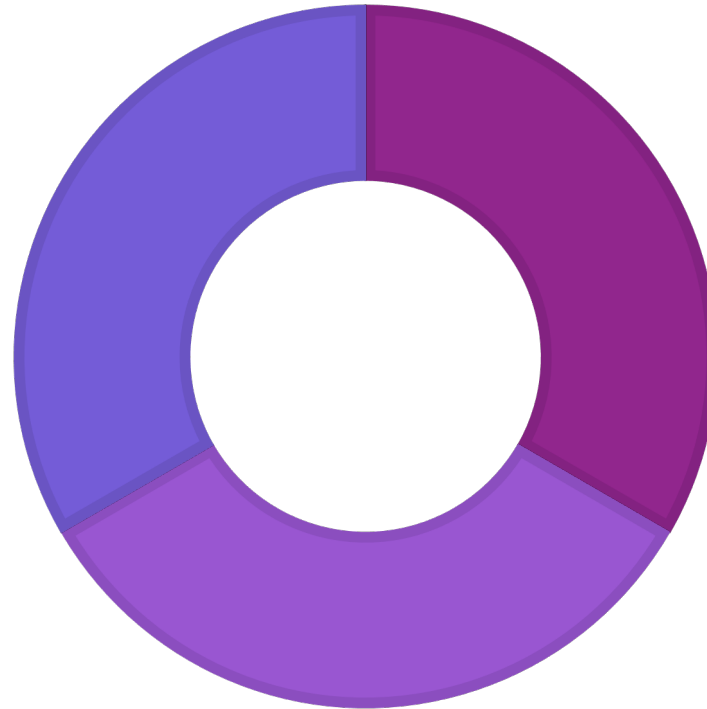
Every mother and every child deserve a healthy and joyous birth...let's work together to end the injustice of Black infant and maternal deaths in the County.



SGV Community Action Team

■ Government ■ Community Based Organizations ■ Residents

**A partnership, a team that
relies on equal effort.**



FAQs

- ❖ How do I join the Community Action Team?
 - ❑ To receive meeting information via email, you can opt in to join the mailing list when registering on Eventbrite, or you can email atrejo@ph.lacounty.gov anytime to be added to the mailing list, go to the link to the right or scan the QR code with your Camera app on your phone right now.
- ❖ When does the CAT meet?
 - ❑ Bi-monthly, last Thursday of the month from 4pm-5:30pm.
- ❖ Any experience or skills required?
 - ❑ No experience of any kind necessary.
- ❖ Who will choose the areas of focus the committees will form around?
 - ❖ The CAT collectively will select the areas of focus these sub-committees will address.
- ❖ Do I have to be at every meeting?
 - ❑ Commitment is important. The more we lend our voices and thoughts to the decision-making process, the more we grow as an impactful team. We ask that you're present as often as you can be.



Sign up for the Community Action Team mailing list:

<http://bit.ly/SGVAAIMMSignUp>

Or Scan QR Code Above

A Thanks Again to All the Partners that have already **Joined the Movement:** Your AAIMM Planning Team

City of Pasadena Public Health

PHFE WIC

PAC-LAC

The Therapeutic Play Foundation

The Feel Well Empowerment Center

Prototypes

Fields Family Counseling Services

Painted Brain

Urban Coalition for Wellness and Capacity Building

Birthing Babies Doula Services

Kaiser Permanente Baldwin Park

First5LA

Los Angeles County Dept. of Health Services – Mama’s Neighborhood

Los Angeles County Dept. of Mental Health

Los Angeles County Dept. of Child and Family Services

Los Angeles County Dept. of Public Health

Questions? Want to reach out?
Contact:
Annette atrejo@ph.lacounty.gov
Or go to
www.blackinfantsandfamilies.org



San Gabriel Valley
**AFRICAN AMERICAN
INFANT & MATERNAL
MORTALITY
COMMUNITY ACTION
TEAM
FIRST MEETING OF
2021**

**February 25, 2021
4:00pm-5:30pm**

Sign up for the Community
Action Team mailing list:
<http://bit.ly/SGVAAIMMSignUp>
Or Scan Here:



Contact Annette
atrejo@ph.lacounty.gov with
questions, announcements, etc.

**Register on Eventbrite to Receive
Meeting Link:**
<https://bit.ly/Feb2021SGVAAIMMCAT>

The SGV AAIMM Community Action Team
is open to all families & community
members who wish to Join the
MOVEMENT to elevate the health and
wellness of African American/ Black moms
and babies in the San Gabriel Valley
community.
Learn more at blackinfantsandfamilies.org