



# ABILITIES FIRST

ENRICHING THE LIVES OF CHILDREN  
& ADULTS IN OUR COMMUNITIES

## LOOKING FOR AFFORDABLE HOUSING?

FOR IMMEDIATE OCCUPANCY

### THE MEWS AT HOPEWELL JUNCTION

An Income Based Affordable Housing Community

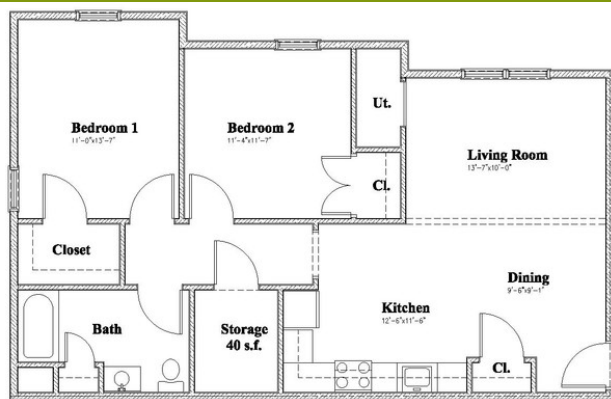
Cannon Lane & NY 376, Near Rt. 82 | Hopewell Junction, Dutchess County, NY

Located across from Town of East Fishkill Town Hall and Hopewell Hose Fire Company #1



### BEAUTIFUL, TWO BEDROOM APARTMENT AVAILABLE\*

NEW CONSTRUCTION IN PEACEFUL SETTING | MODERN & SPACIOUS | ENERGY EFFICIENT DESIGNED



2 Bedroom Apt.  
955 s.f.

#### AMENITIES INCLUDE:

- Close to Retail, Public Transportation & Recreation
- On-site Management & Property Superintendent
- On-site Parking
- Laundry Facilities On-site
- Ample Storage, Eat-in Kitchen
- Central Air Conditioning
- Wired for Cable, Internet & Phone Connectivity
- Mobility and/or Audio Visually Adapted Units Available
- Internet Café, Community Room, Lounge/Television Room
- Walkways, Patio/Picnic Area, Playground
- Water, Garbage and Sewer Included

REVISED  
INCOME  
LIMITS!

Staffing supports available as needed. OPWDD financial rental assistance available for enrollees.

**\*To be considered for the 2 bedroom apartment, one occupant must be OPWDD eligible.**

#### Income Limits Based on Number of Residents Per Unit:

2 persons = \$40,950

3 persons = \$46,050

4 persons = \$51,150

For more information or to apply, contact Gina Carminucci, Director of Community Services, at 845.475.3217 ext. 385 or [ginacarminucci@abilitiesfirstny.org](mailto:ginacarminucci@abilitiesfirstny.org).



DEVELOPED BY  
**KEARNEY**  
GROUP

167 Myers Corners Road, Ste. 202, Wappingers Falls NY 12590 | 845.485.9803 | [abilitiesfirstny.org](http://abilitiesfirstny.org) | [info@abilitiesfirstny.org](mailto:info@abilitiesfirstny.org) | [f](https://www.facebook.com/abilitiesfirstny) [in](https://www.instagram.com/abilitiesfirstny)