



ABILITIES FIRST

ENRICHING THE LIVES OF CHILDREN
& ADULTS IN OUR COMMUNITIES

LOOKING FOR AFFORDABLE HOUSING?

FOR IMMEDIATE OCCUPANCY

THE MEWS AT HOPEWELL JUNCTION

An Income Based Affordable Housing Community

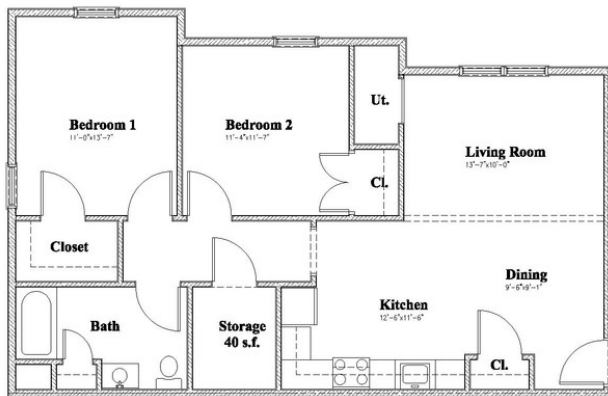
Cannon Lane & NY 376, Near Rt. 82 | Hopewell Junction, Dutchess County, NY

Located across from Town of East Fishkill Town Hall and Hopewell Hose Fire Company #1



BEAUTIFUL, TWO BEDROOM APARTMENT AVAILABLE

NEW CONSTRUCTION IN PEACEFUL SETTING | MODERN & SPACIOUS | ENERGY EFFICIENT DESIGNED



2 Bedroom Apt.
955 s.f.

AMENITIES INCLUDE:

- Close to Retail, Public Transportation & Recreation
- On-site Management & Property Superintendent
- On-site Parking
- Laundry Facilities On-site
- Ample Storage, Eat-in Kitchen
- Central Air Conditioning
- Wired for Cable, Internet & Phone Connectivity
- Mobility and/or Audio Visually Adapted Units Available
- Internet Café, Community Room, Lounge/Television Room
- Walkways, Patio/Picnic Area, Playground
- Water, Garbage and Sewer Included

Staffing supports available as needed. OPWDD financial rental assistance available for enrollees.

Income Limits Based on Number of Residents Per Unit:

1 person = \$20,310

2 persons = \$23,190

3 persons = \$26,100

4 persons = \$28,980

For more information or to apply, contact Gina Carminucci,
Director of Community Initiatives, at 845.475.3217 ext. 385
or ginacarminucci@abilitiesfirstny.org.



DEVELOPED BY
KEARNEY
GROUP