



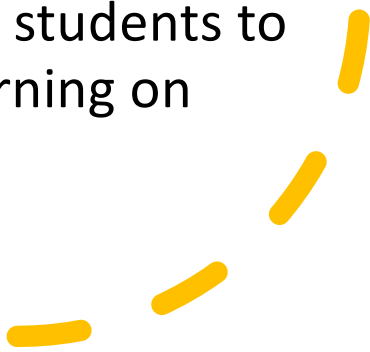
“Test or 10” Learning Support Plan

When students must stay home from
school due to illness or quarantine.

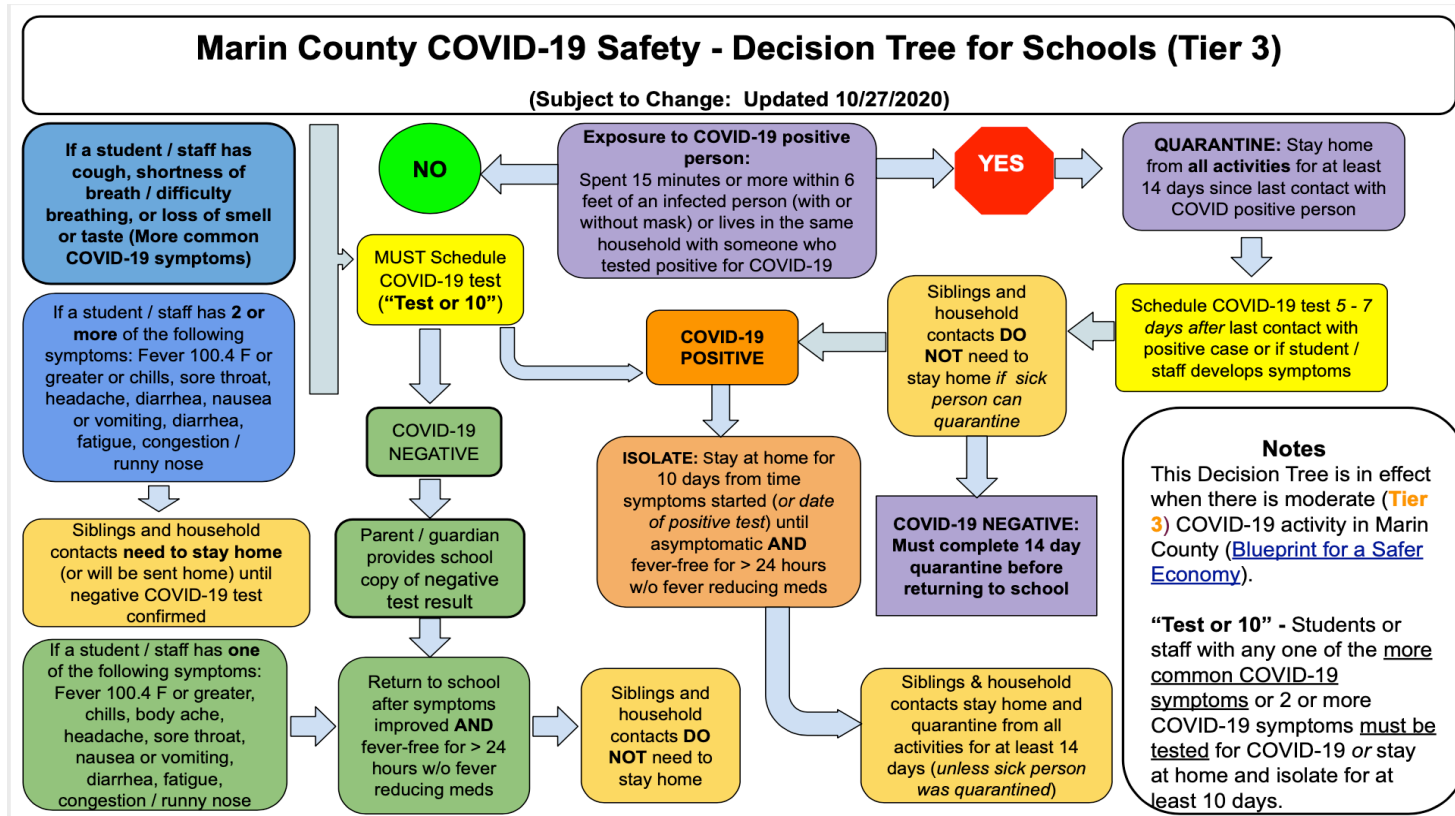


A large orange shape on the left side of the slide, consisting of a rectangle with a quarter-circle cutout on its right side.

Purpose

- Accommodate students who must stay home from school in response to the “Test or Ten” requirement outlined by Marin County Public Health Department
 - Students who are truly ill need to rest and recover and are not expected to participate in the Learning Support Plan until they are feeling better
 - Provide continuity in learning for students to be able to re-enter in-person learning on pace with classmates
- 
- Four short, curved yellow lines arranged in a diagonal pattern in the bottom right corner of the slide.

Decision Tree for Tier 3



Learning Support Plan During Phase 1

- Students can participate during distance learning with the rest of their class at all schools

Learning Support Plan During Phase 2

- Students participate in their 3 days of scheduled distance learning
- On the two days of in-person learning; elementary teachers email assignments to students; students participate in the morning and end of day check in
- Students participate in specialist programs
- Parents pick up books or materials (if applicable)



Elementary Learning Support Plan Phases 3 & 4

Weekly schedule will be created for each grade level and be provided to students when they are absent

- Students will complete a combination of teacher designated classroom specific assignments and grade level skill practice

Students will participate in specialists' classes (virtually)

Student materials will be available for pick up or sent electronically

Teachers will meet with students up to 3 times for up to 30 minutes each week to review work, answer questions or teach a mini-lesson (during prep period or before/after school)

Students who can complete assignments on their days absent will be counted as present for attendance purposes

INDEPENDENT LEARNING SCHEDULE

MONDAY January 11	TUESDAY January 12	WEDNESDAY January 13	THURSDAY January 14	FRIDAY January 15
<input type="checkbox"/> Spanish : 10:30-11:20 Mrs. Jackson : 3:00-3:30	<input type="checkbox"/> Music : 9:00-9:50	<input type="checkbox"/> Art : 11:20-12:10 Mrs. Jackson : 3:00-3:30	<input type="checkbox"/> PE : 9:20-10:10	<input type="checkbox"/> Library : 1:00-1:50 Mrs. Jackson : 3:00-3:30
<input type="checkbox"/> MATH Eureka Math (M3 L3) Reflex Math (20m)	<input type="checkbox"/> MATH Eureka Math (M3 L4) DreamBox (20m)	<input type="checkbox"/> MATH Eureka Math (M3 L5) Reflex Math (20m)	<input type="checkbox"/> MATH Eureka Math (M3 L6) DreamBox (20m)	<input type="checkbox"/> MATH Eureka Math (M3 L7) Reflex Math (20m)
<input type="checkbox"/> READING Read Aloud 1 Ind. Reading (30m) Point of View: Intro video Handout from Teacher Activity: Cinderella's Very Bad Day	<input type="checkbox"/> READING Read Aloud 2 Ind. Reading (30m) Lexia (20m) Point of View: Handout from Teacher Activity: Cinderella, Too Much for Words	<input type="checkbox"/> READING Read Aloud 3 Ind. Reading (30m) Point of View: Handout from Teacher Activity: Medusa, Part 1	<input type="checkbox"/> READING Read Aloud 4 Ind. Reading (30m) Lexia (20m) Point of View: Handout from Teacher Activity: Medusa, Pt. 2	<input type="checkbox"/> READING Read Aloud 5 Ind. Reading (30m) Point of View: Handout from Teacher Activity: Cap O' Rushes
<input type="checkbox"/> WRITING Poetry Unit Intro: Concrete Poems	<input type="checkbox"/> WRITING Poetry Unit 2: Freeverse	<input type="checkbox"/> WRITING Poetry Unit 3: Haikus, Sample Poem, Printout	<input type="checkbox"/> WRITING Poetry Unit 4: Activity, Printout	<input type="checkbox"/> WRITING Poetry Unit 5: Choice
<input type="checkbox"/> SCIENCE Seed Dispersal video Activity Preview Printout 1, 2 , 3	<input type="checkbox"/> SOCIAL STUDIES Communities: Then and Now Intro Video Odysseus: A Greek Hero (handout)	<input type="checkbox"/> SCIENCE Water, Sunlight, and Plant Growth video Activity Preview Printout 1	<input type="checkbox"/> SOCIAL STUDIES Communities: Then and Now Odysseus: A Greek Hero (handout)	<input type="checkbox"/> SCIENCE Light, Leaves, and Competition video Activity Preview Printout 1
<input type="checkbox"/> PARENT INITIALS	<input type="checkbox"/> PARENT INITIALS	<input type="checkbox"/> PARENT INITIALS	<input type="checkbox"/> PARENT INITIALS	<input type="checkbox"/> PARENT INITIALS

Middle School Learning Support Plan Phases 3 & 4

The modified Phase 3 model for Del Mar, which was necessary to accommodate space limitations on campus, will be able to support “Test or 10” students who will attend school with the part of the cohort on a distance learning schedule.





Questions?

