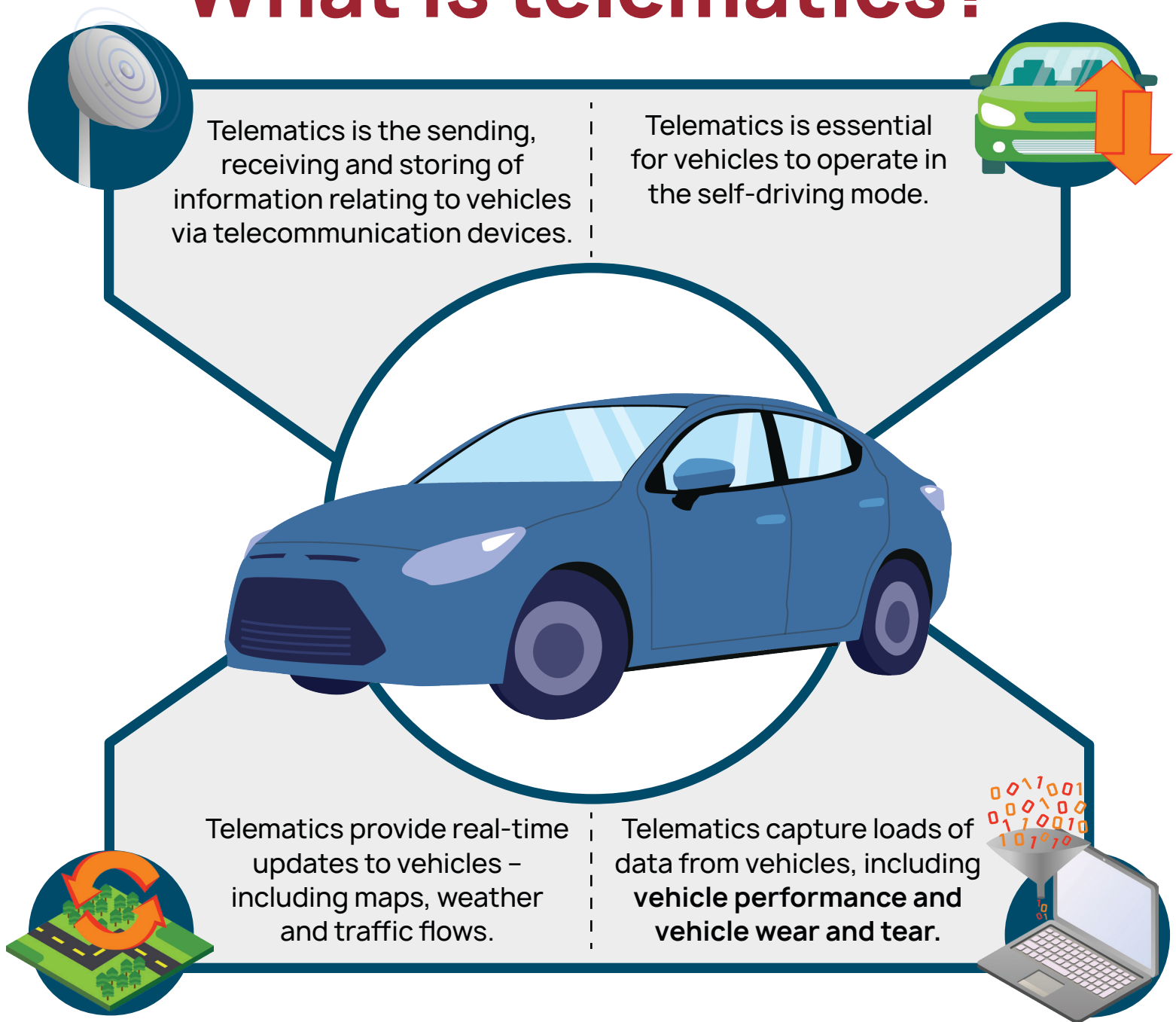


# What is telematics?



## How do telematics systems work?

Think of in-vehicle telematics systems as a **black box** embedded into a vehicle.

Internet connectivity is used to establish a **remote bi-directional** portal into a vehicle and its data.

The vehicle sends and receives **real-time information** on vehicle repair data & software updates collected from sensors outfitted on the car.