



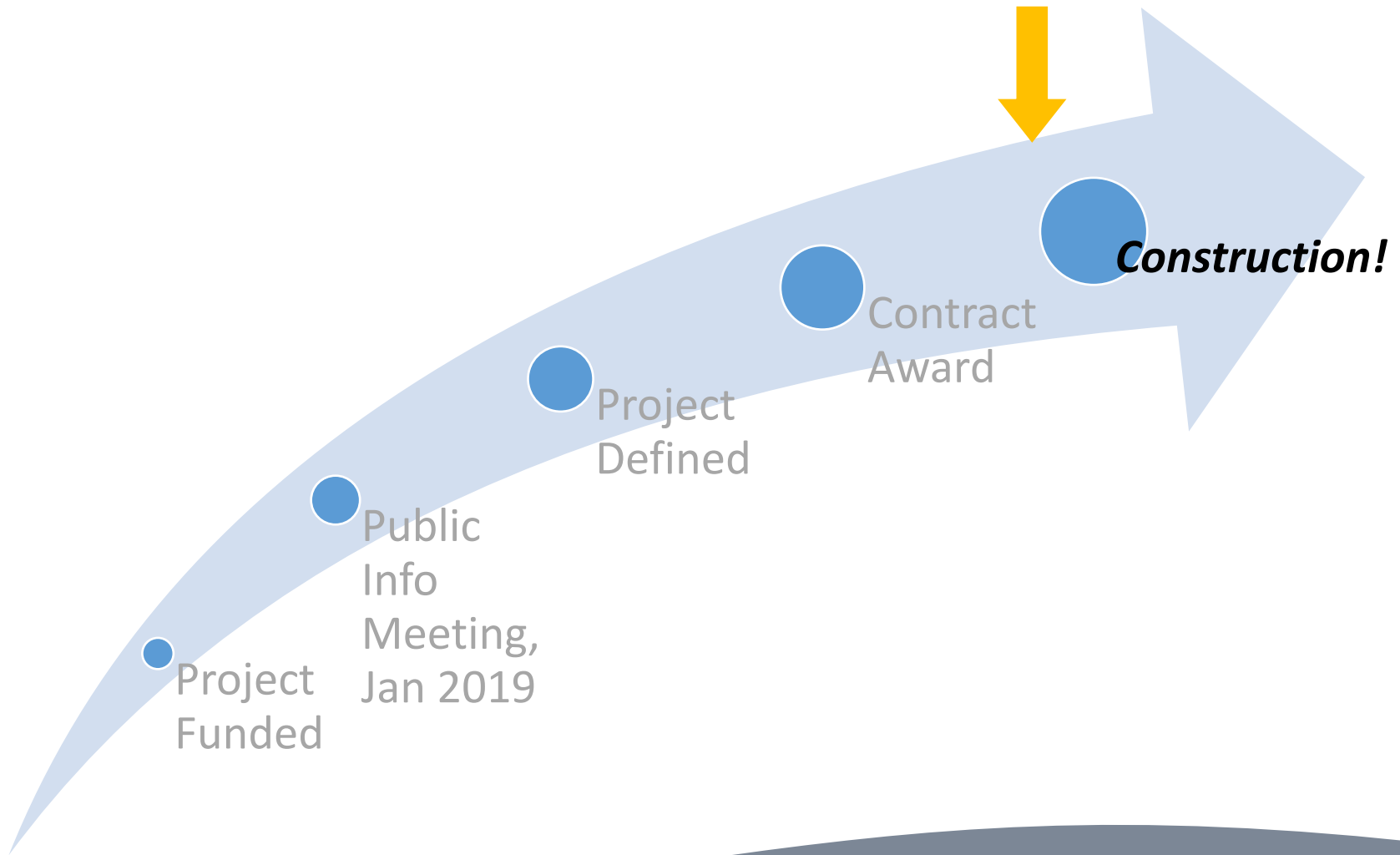
**VT Route 104A – Bridge #1 over Arrow Head Lake**  
**Georgia BF 023-1(7)**  
**Pre-Closure Summary**

# Project Location



**Bridge Location**

# VTrans Development Process



# Project Construction Schedule

- Upcoming Major Project Milestones:
  - Begin Pre-Work on Site: **June 22<sup>nd</sup>**
  - Anticipated Bridge Closure: **July 15<sup>th</sup>**
  - Anticipated Bridge Opening: **August 19<sup>th</sup>**
  - Bridge Closure Duration: **35 Days (Anticipated)**
  - Project Completion: **September 25<sup>th</sup>**

# Contractor & Work Hours

- CCS Constructors Inc., Morrisville Vermont

## **Pre-Closure – June 22<sup>nd</sup> thru July 14<sup>th</sup>**

- Anticipated Daily Work Hours – 6am to 8pm

## **Bridge Closure – July 15<sup>th</sup> thru August 19<sup>th</sup>**

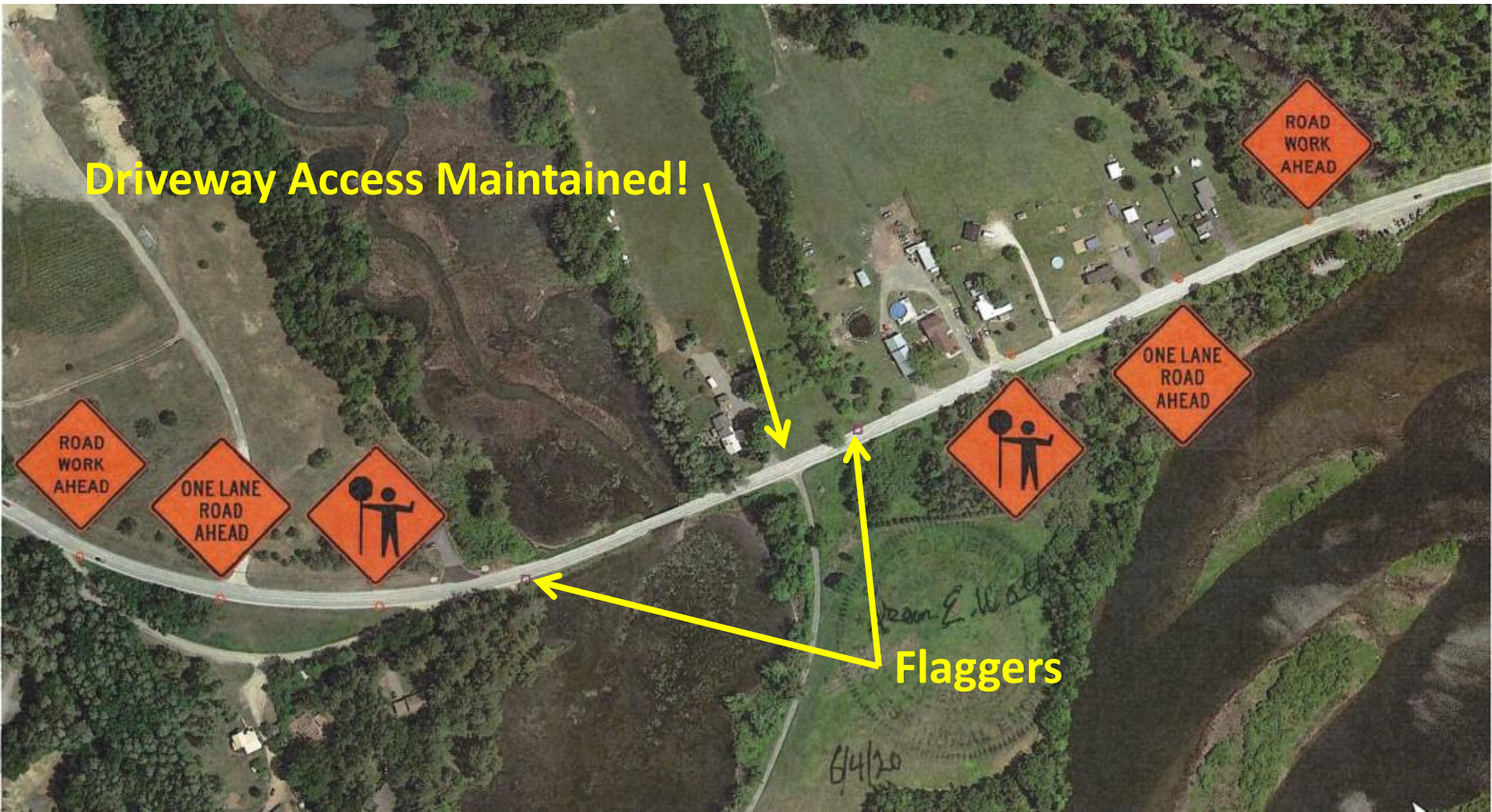
- Anticipated to Work 7 Days a Week
- Anticipated Daily Work Hours – 6am to 8pm

# Project Impacts – Prior to Bridge Closure

- Increased Lane Closure Length and Reduced Roadway Width
  - Allows for Additional Pre-Work to Reduce Work Required During Closure
  - Lane Reduced to 10' Wide During Daily Lane Restrictions

# Project Impacts – Prior to Bridge Closure

- Daily Traffic Control Plan Prior to Bridge Closure



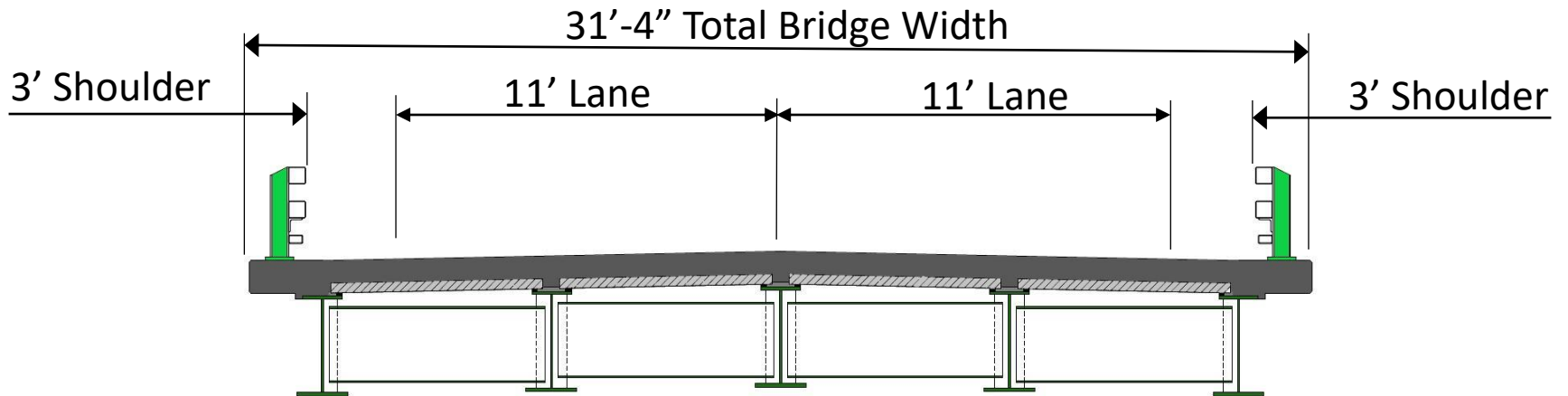
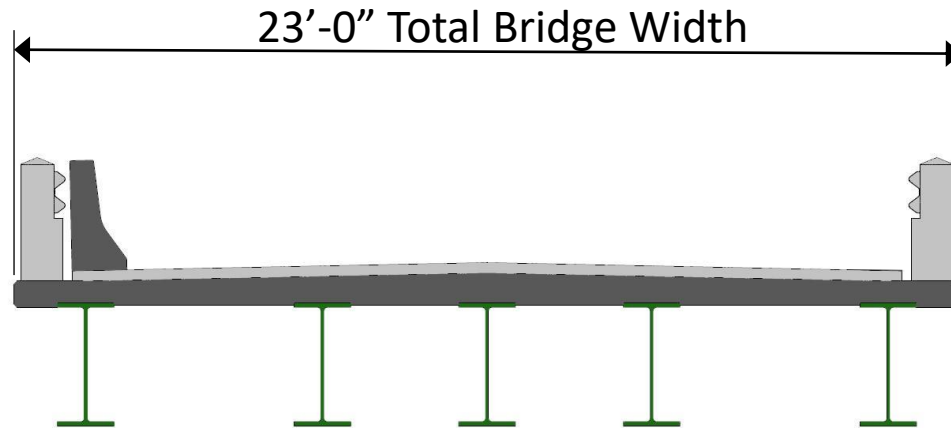
# Existing Condition – Why Are We Here?



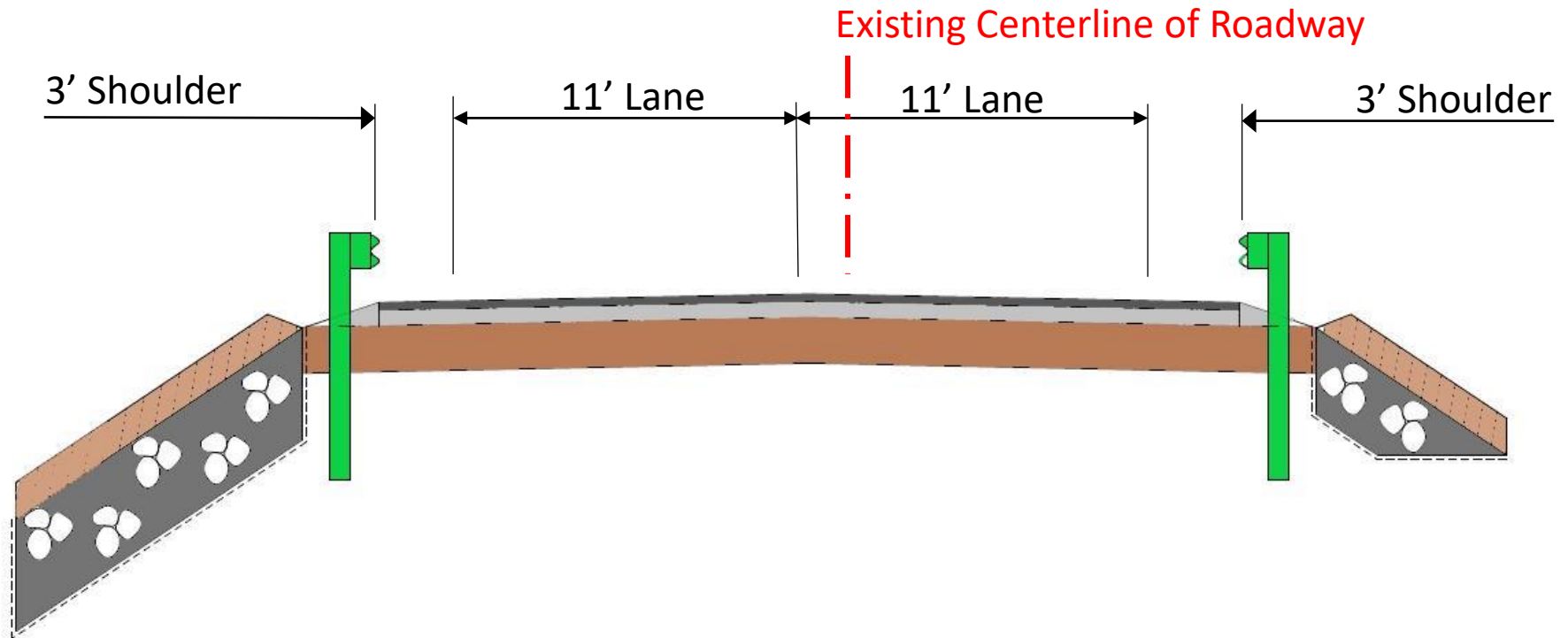
# Proposed Bridge

- Full Bridge Replacement Design Criteria & Goals:
  - Widen To Match The Corridor
  - 11-foot Lane Width and 3-foot Shoulder Width Typical Cross Section
  - 75 Year Design Life
  - Minimize Right-Of-Way Impacts
  - No Utility Relocation
  - Minimize Environmental Impacts

# Proposed Bridge



# Proposed Roadway



- Roadway Shifted North Approximately 3'
- Majority of Impacts Limited to North Side of Causeway

# Proposed Bridge Summary



- Bridge Width
- Span Length
- Clearance Above Lake

**Proposed**

**Existing**

**31'-4"**

**23'-0"**

**90'-0"**

**74'-0"**

**2'**

**2'**

# Proposed Bridge Summary

## Accelerated Bridge Construction



- Bridge Elements Constructed in Advance, Brought to Site, & Connected – *Greatly Increases Speed of Construction*

# Proposed Bridge Summary

## Accelerated Bridge Construction

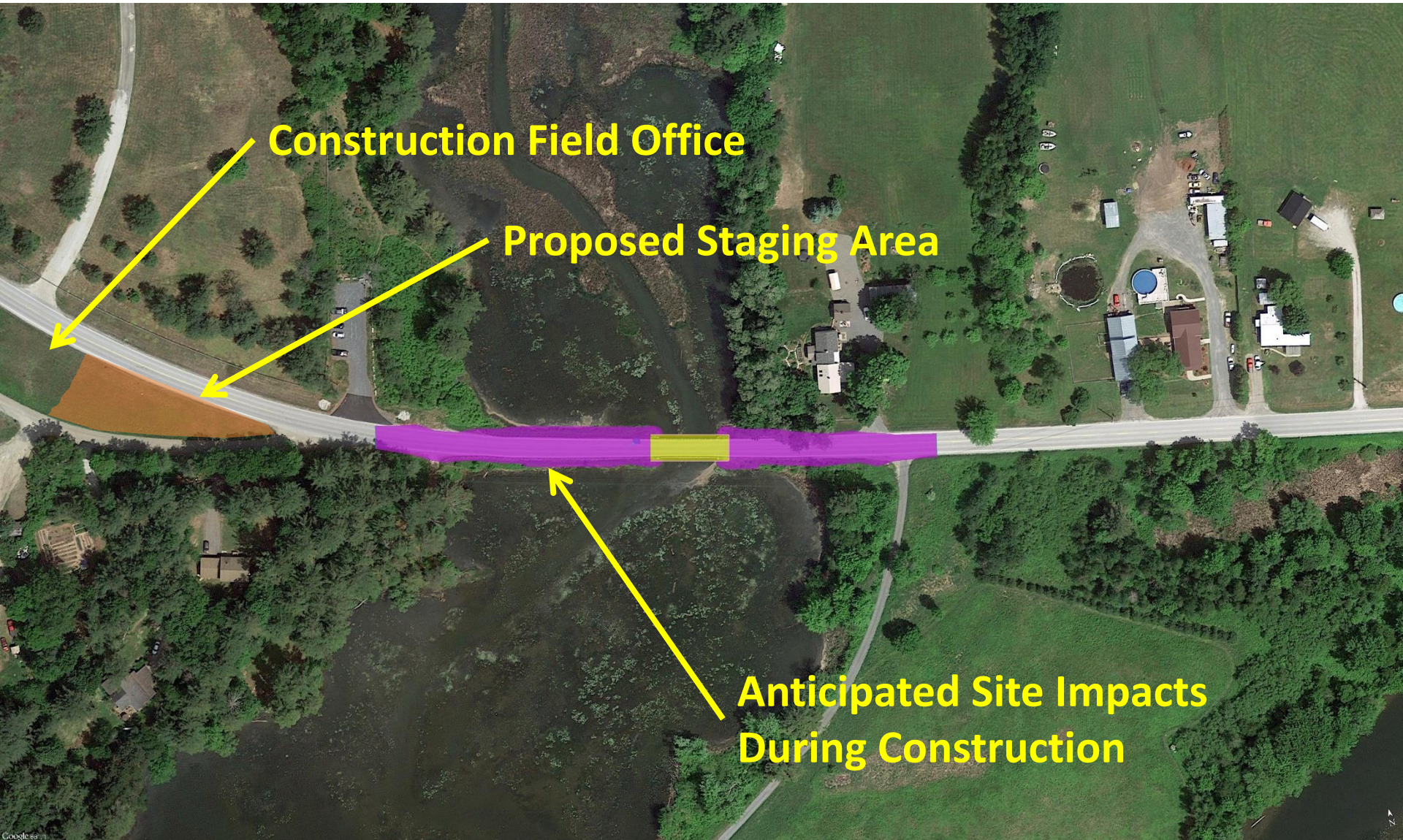


- Proposed Bridge Abutments to be constructed to minimize impacts to Arrowhead Lake

# Project Impacts?

- **Right-of-Way Impacts?**
  - **NO** – All Impacts Limited to Vermont Right-of-Way
- **Utility Conflicts?**
  - **No** – Construction Will Not Require Utility Relocation
- **Environmental Impacts?**
  - Total Project Footprint Less than ½ Acre
- **Driveway Access Maintained?**
  - **All** Driveway Access to be Maintained

# Project Impacts During Construction?



**Construction Field Office**

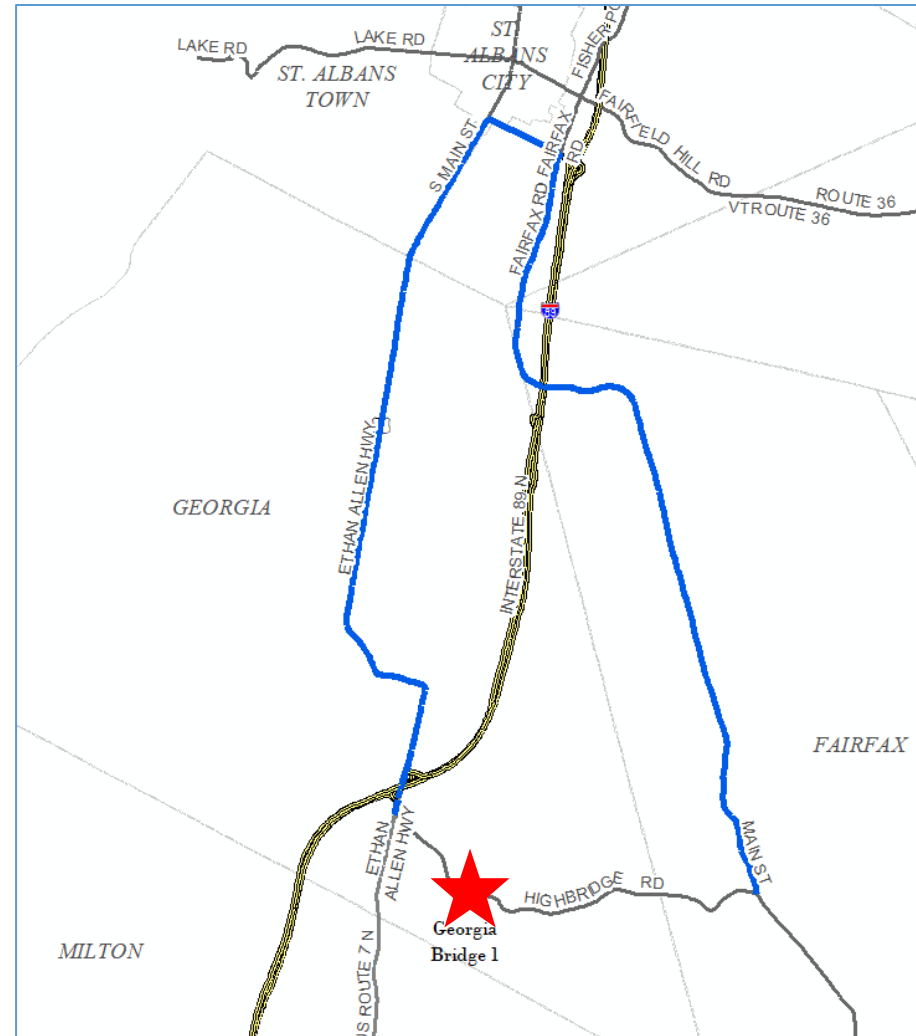
**Proposed Staging Area**

**Anticipated Site Impacts  
During Construction**

# Traffic Control Summary

## Offsite Detour

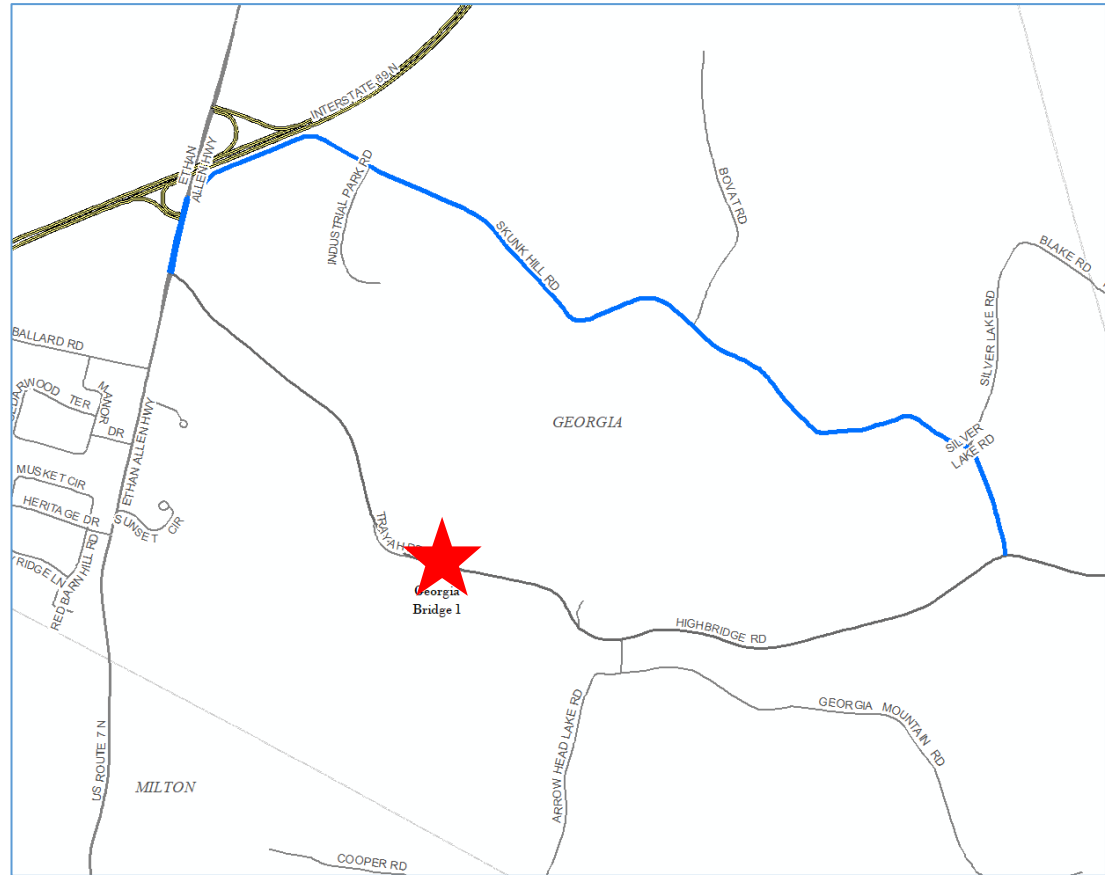
- The Shortest Regional Detour Route, Has An End-to-end Distance Of 22.7 Miles
- Signing and Message Boards to be Placed along Entire Route



# Traffic Control Summary

## Local Bypass

- The Shortest Local Bypass has Distance Of 6 Miles
- Local Bypass to be Unsigned



# Public Outreach

Public Information Consultant:

**Jennifer Zorn**

- To Sign Up for the E:Newsletter with project updates – send an email to [jzorn@mjinc.com](mailto:jzorn@mjinc.com)
- Jennifer Zorn's phone: **802-862-9381 Ext. 1410**

A photograph of a concrete bridge over a river. The bridge has a railing and is surrounded by trees and greenery. A semi-transparent dark grey box is overlaid on the center of the image, containing white text. In the bottom right corner, there is a yellow date stamp.

**Questions?**

**Don't Hesitate to Ask!**

08/02/2017