

Red Cross Disaster Mental Health Service Associate Arizona Wide Training! First Annual

Friday, April 29, 2022

9 am to 2:30 pm

Saturday, April 30, 2022

9 am to 2:30 pm

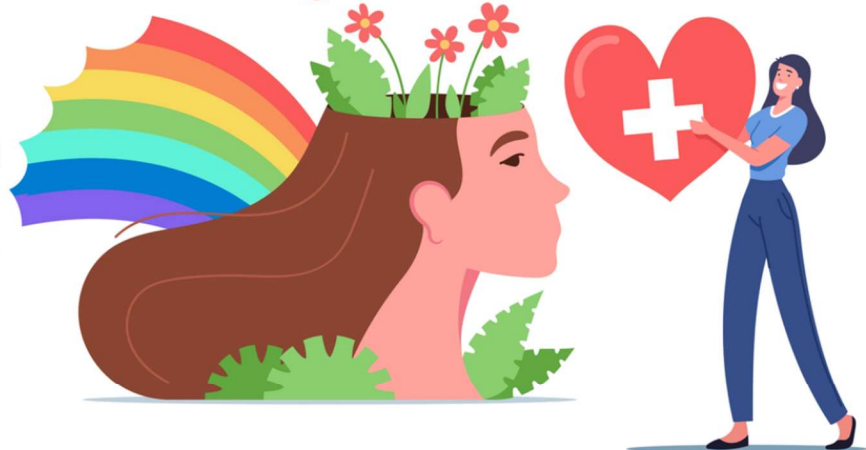
(must attend both days to complete certification)

Choice of Three Locations:

Phoenix: American Red Cross, 4747 N.
22nd Street, Phoenix, AZ 85016

Flagstaff: NAU Police Dept., 525 E. Pine
Knoll Dr. Bldg. 98A, Flagstaff, AZ 86011

Tucson: American Red Cross, 2916 E.
Broadway Blvd., Tucson, AZ 85716



**Live Training Offered by American Red Cross Arizona and
New Mexico Region in Conjunction with the Interprofessional
Behavioral Health Collaborative of Arizona (IBHC of AZ)**

Register at <https://azpa.org/event-4768741>

WHY SHOULD YOU ATTEND?

We have an Arizona shortage of Disaster Mental Health trained volunteers to assist in working with persons affected by disasters. Helping other volunteers and responders manage their stress is also vital in this capacity. Whether fostering a positive culture in disaster shelters, being a patient listener for someone who needs to talk about what they have gone through, or even spotting early signs of traumatic stress that can be referred for specialist care, Disaster Mental Health volunteers help create conditions where people, families, responders, and communities can rebuild after devastating events. Licensed medical and mental health providers, community workers, and healthcare students work on interprofessional teams together to respond to disasters and provide critical support. In this American Red Cross Disaster Mental Health Service Associate Training, learners will receive essential training on providing team-based disaster mental health interventions and services and responding to disasters. As a trained responder, you can volunteer from home, help within your community, or deploy to a national disaster. *Completing this free, live training makes you eligible to participate in American Red Cross disaster mental health response; however, there is no minimum volunteer participation associated with completing the training.*

WHO SHOULD ATTEND?

Psychologists, Mental Health Providers, Psychiatric Physicians, Psychiatric Nurses, Marriage and Family Therapists, Social Workers, Professional Counselors, School Counselors, and School Psychologists. All healthcare students are welcomed to attend.

This activity is offered at no charge and is approved 9 continuing education credits per completed course.

For details on the continuing education credit, see below.

Pre-registration is required. Light breakfast and snacks will be provided.



American Red Cross
Arizona and New Mexico Region



ASU College of
Health Solutions
Arizona State University



INTERPROFESSIONAL BEHAVIORAL
HEALTH COLLABORATIVE OF ARIZONA
IBHC OF AZ

This First Annual Red Cross Disaster Mental Health Service Associate Arizona Wide Training is made possible by support from the American Red Cross Arizona and New Mexico Region, Northern Arizona University Police Department, Arizona State University College of Health Solutions, and the IBHC of AZ.



The ASU Office of Interprofessional Continuing Health Education states that

0225-22 Disaster Mental Health Worker Service Associate Training

is jointly accredited for:

AMA PRA Category 1 Credits™ - CME - 9 credit hours per completed course

Nursing Continuing Professional Development Credits - NCPD - 9 credit hours per completed course

Psychology— APA— 9 credit hours per completed course

Social Work— ACE— 9 credit hours per completed course

Interprofessional Continuing Education Credits -IPCE - IPCE - 9 credit hours per completed course

Accreditation—JAICE

In support of improving patient care, Arizona State University is jointly accredited by the Accreditation Council for Continuing Medical Education (ACCME), the Accreditation Council for Pharmacy Education (ACPE), and the American Nurses Credentialing Center (ANCC) to provide continuing education for the healthcare team.

Accreditation—APA

American Psychological Association (APA) Continuing Education (CE) credits for psychologists are provided through the co-sponsorship of the American Psychological Association (APA) Office of Continuing Education in Psychology (CEP). The APA CEP Office maintains responsibility for the content of the programs.

Accreditation Statement—ACE

As a Jointly Accredited Organization, Arizona State University is approved to offer social work continuing education by the Association of Social Work Boards' (ASWB) Approved Continuing Education (ACE) program. Organizations, not individual courses, are approved under this program. State and provincial regulatory boards have the final authority to determine whether an individual course may be accepted for continuing education credit. Arizona State University maintains responsibility for this course. Social workers completing this course receive 9 continuing education credits.

Accreditation Statement—IPCE

This activity was planned by and for the healthcare team, and learners will receive Interprofessional Continuing Education (IPCE) 9 credits for learning and change.

Disclaimer—

Participants should only claim credits according to actual attendance.

