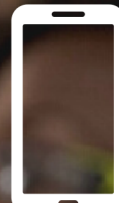


# EDUCATOR

workforce academy



SCAN  
ME



## OCTOBER 2022

Geneva County **Oct. 6**  
Pike County **Oct. 19**

## DECEMBER 2022

Crenshaw County **Dec. 1**  
Barbour County **Dec. 8**

## JANUARY 2023

Coffee County **Jan. 18**  
Houston County **Jan. 25**

## FEBURARY 2023

Covington County **Feb 23**  
Henry County **Feb 28**

## APRIL 2023

Butler County **April 25**  
Dale County **April 26**

## TOUR DATES

Pick 3 - Must attend 3  
classes to earn PLU  
**2022-2023**

**PROFESSIONAL DEVELOPMENT HOURS ALSO AVAILABLE**

Register here: <https://seaw.me/ewa23>